

Product datasheet for **RG226681**

VWA5B1 (NM_001039500) Human Tagged ORF Clone

Product data:

Product Type:	Expression Plasmids
Product Name:	VWA5B1 (NM_001039500) Human Tagged ORF Clone
Tag:	TurboGFP
Symbol:	VWA5B1
Mammalian Cell Selection:	Neomycin
Vector:	pCMV6-AC-GFP (PS100010)
E. coli Selection:	Ampicillin (100 ug/mL)
ORF Nucleotide Sequence:	>RG226681 representing NM_001039500 Red=Cloning site Blue=ORF Green=Tags(s)

TTTTGTAATACGACTCACTATAGGGCGGCCGGGAATTCGTCGACTGGATCCGGTACCGAGGAGATCTGCC
GCC**CGATCGCC**

ATGCCCGGCTTGCTGAATTGGATCACGGGGCAGCCCTGCCCTCACCGCTCTGATGTTACCTCCTGTG
TCAGCGGTTATGCCCTGGGCCTAACTGCCTCCCTCACCTATGGCAACCTGGAAGCCAGCCCTTCCAGGG
CCTTTCGTGTACCCCTGGATGAGTGCACCACGGTATCGGCTTTGAGGCAGTCATTGCCGACCGTGC
GTGACAGTACAGATCAAGGACAAAGCCAAGCTGGAGAGCGGCCACTTCGATGCCCTCCCATGTTCCGATCCC
CAACAGTACAGGGAACATTCTGCAAGACGGGGTTTCCATAGCCCTCATTCTGCACACCGGAAAGGT
GACCTTGGACGAGGATTTGGAGCGATCCTGTTGTTGGCCAACCTGGGGACCATTGCCCCCATGGAGAAT
GTCACCATCTTATCAGCACCTCCTCGGAGCTCCAACGCTGCCAGCGGGGCTGTGAGGTCTCTCTGC
CTGCTGTCTGTGCCCAACCGTGCCTGAGTCTGCACCAAGAGCACTGGCACCTCCAACCAACAGGCCCA
GGGCAAAGACAGGCACTGCTTCGGTGCCTGGGCCCGGGCTCCTGGAATAAGTTGTGCCTGGCGACTCTC
CTGAACACCGAAGTGTCCAACCCATGGAGTATGAGTTCAACTCCAGCTGGAGATCCGTGGGCCATGTC
TGCTCGCAGGGGTGGAGAGTCCCACTCATGAGATTCGTGCCGACGCCGCCCATCTGCCCGCTCGGCCAA
GAGCATCATCACCTTGCCAAACAAGCACACCTTTGACCGCCTGTGGAGATCCTCATCCACCCAGC
GAGCCCATATGCCCATGTCCTGATAGAGAAAGGGGACATGACCCTGGGAGAGTTTGACCAGCACTTGA
AGGGAAGAACAGATTTTCATTAAGGGATGAAGAAGAAGAGCAGAGCAGAGCGGAAGACAGAAATCATTCG
AAAACGCCTCCACAAAGACATTCACCACTCCGTCATCATGCTCAACTTCTGTCCCGACTCCAGTCA
GTCCAGCCGTGCCTGAGAAAGGCCACGGGGAGTTCATCTTCTCATTGACAGGAGCAGCAGCATGAGCG
GGATCAGCATGCACCGAGTCAAGGATGCCATGTTGGTGGCCCTAAGAGCCTCATGCCAGCTGCCTCTT
CAATATCATTGGGTTGGATCCACATTAAGAGCCTTTTCTCCAGCCAGACCTACAGTGAGGACAGC
TTGGCCATGGCTGTGATGACATCCAGAGAATGAAGGCCGACATGGGTGGGACCAACATCCTTTCCCTC
TCAAGTGGGTATCAGGCAGCCAGTGCACCGAGGCCACCCGCGCTCCTCTTCTGATCACAGATGGCGC
TGTAACAACACAGGGAAGGTGCTGGAGCTGGTGGGAAATCACGCCTTCTCCACAGGTGCTATAGCTTT
GGAATTGGACCAACGCTCTGCCACAGACTGGTGAAGGACTGGCATCTGTGTCCGAGGGCAGTGCTGAGC
TCCTGATGGAGGGGAGCGGCTGCAACCAAGATGGTCAATCCTTGAAGAAGGCCATGGCCCCAGTCTCT



View online »

GAGCGATGTGACTGTGGAGTGGATCTTCCCTGAGACCACTGAGGTCTGGTCTCACCCGTACGCGCCAGC
TCCCTCTTCCCTGGAGAACGGCTGGTGGGGTATGGCATTGTATGTGATGCTTCTTTGCACATCTCCAATC
CCAGATCTGACAAGAGGCCGCGGTACAGCATGCTGCACTCTCAGGAGTCTGGCAGCTCTGTCTTCTACCA
CTCTCAGGATGACGGACCCGGCTGGAAGTGGAGACTGTCCAAGAAGCTCGGGGACCCCTTATCCTA
GGGCAGGCCAAAAATGCCGGCTAGCCAGCGGAGACTCTACCACCAAGCACGATCTGAACCTCTCTCAGC
GACGGAGGGCATACAGCACCAACCAGATACCAATCACAAGCCCTCCCAAGAGCCACCATGGCAAGTGA
CCCCATGCCAGCTGCCAAGAGATACCCACTGCGGAAAGCCAGGCTGCAGGACCTACCAACCAGACCAGC
CTGGATGTCCAGCGGTGGCAGATTGATTTGCAGCCCTTGCTGAACAGTGGTCAAGACCTGAACCAGGGCC
CCAAACTCCGTGGCCAGGGGCCGAAGCCCTCTCTGCTGCCCAAGGCTGCCAGCCCTTCTGCCCTG
GGGCCAGGAGACCCAGGCTGGAGCCCTGTGAGAGAGCGGACTTCTGACAGCCGAAGCCCTGGAGATCTG
GAGCCGTCCCACCATCCCTCTGCCTTCGAGACAGAGACGTCTCGGACTGGGACCCCCAGCCGAGTCCC
AGGAGCGAGCCAGTCCCAGCAGGCCGCCACCCCGCCCGGTGCTGGGCAAGGCCCTGGTCAAAGGCCCT
GCACGACAGCCAACGCCTGCAGTGGGAGGTGAGCTTCGAGCTGGGACCCCTGGACCGGAGCGGGGGCC
GCGCAGGATGCCACCTATGGAGCGAGACCTTCCACCACCTGGCGCCCGCCCATCATCCGCGACTTCG
AGCAGCTGGCGGAGCGCAGGGGAGATCGAGCAGGGTCCAACCGCCGCTACCAAGTGAAGCCCTTGCA
CACCAGCAAGGCCCTGCAACATCATTAGCAAATACACAGCCTTCGTGCCTGTGGACGTGAGCAAGAGCCGG
TACCTGCCACCCGTGGTGGAGTACCCCAACTCTGGAGCTGCCCTGCGTATGCTTGGCTCTCGGGCCCTGG
CCCAACAGTGGAGGGGCACCTCTTCTGGCTTTGGAAGGCCGAGACGATGCTTGGAGAAGATTGGGCACC
AGGAAATGACATGGAGGCAAGTCCCCTGCTCTTTCAGCGAGGCCAGGTCCCCCGCCGCGAGAAGCAC
GGTGTCTTGAAGGTCCCAGCGCAGCCTGGCTACAAATACTCTTTTCCATGAAGGCCCTCAGAGAATC
TCTTTGGATCCTGGCTAAATCTCAACAAGTCCAGGCTACTGACCGGAGCAGCCAAGGGCTTCTGAGCAA
GCCACTGATCAAAGCTGTGGAGTCGACCTCCGGGAACCAGAGCTTCGACTACATACTCTGGTGTCTCTG
CAGCTGGCCTCCGAGCCTTCTGCTCAACGAAGCCTTCTGTGAGGCCACGCACATCCCCATGGAGAAGC
TCAAGTGGACGTCCCCCTTACCTGCCATCGAGTGTCCCTCACCACCCGCGCCGTCTGAGTCCAAGACCCC
GAGTCCCCAGCTGTGCACCAGCTCCCGCCTAGGCACCCGTCCTGTGACAGCTTCTCCCTGGAGCCTCTG
GCCAAGGGCAAGCTGGGCTGGAGCCGAGGGCAGTGGTGGAGCACACTGGGAAGCTGTGGGCCACGGTGG
TGGGGCTGGCATGGCTGGAGCACAGTTCGGCCTCCTACTTCACTGAGTGGGAGTTGGTGGCTGCCAAGGC
CAACTCATGGCTGGAGCAGCAGGAAGTACCCGAGGGCCGACGCAGGGCACACTCAAGGCCGCTGCCCGC
CAGCTGTTTGTGCTTCTGCGGCACTGGGATGAGAATCTCGAGTTCATATGCTCTGCTATAACCCGAATT
ATGTG

ACGCGTACGCGGCCGCTCGAG – GFP Tag – GTTTAA

Protein Sequence: >RG226681 representing NM_001039500
 Red=Cloning site Green=Tags(s)

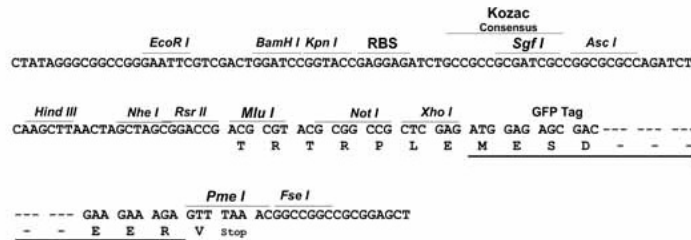
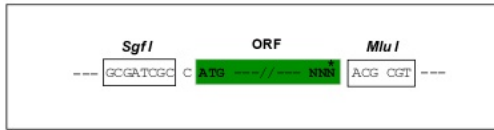
MPGLLNWITGAALPLTASDVTSCVSGYALGLTASLTYGNLEAQPFGFLVYPLDECTTVIGFEAVIADRV
 VTVQIKDKAKLESGHFDASHVRSPTVTGNILQDGVSIAPHSCPTGKVTLDEDLERILFVANLGTIAPMEN
 VTIFISTSELPTLPSGAVRVLLPAVCAPTVPQFCTKSTGTSTNQQAQGKDRHCFGAWAPGSWNKCLATL
 LNTEVSNPMEYEFNFQLEIRGPCLLAGVESPTHEIRADAAPSARSAKSIIITLANKHTFDRPVEILIHPS
 EPHMPHVLIIEKGMTLGEFDQHLKGRDIFKGMKKKSRAERKTEIIRKRLHKDIPHHSVIMLNFPCDLQS
 VQPCLRKAHGEFIFLIDRSSMSGISMHRVKDAMLVALKSLMPACLNIIGFGSTFKSLFPSSQTYSEDS
 LAMACDDIQRMKADMGGTNILSPLKWWIRQPVHRGHPRLLFVITDGAVNNTGKVLELVRNHAFSTRCYSF
 GIGPNVCHRLVKGLASVSEGSSELLMEGERLQPKMVKSLKKAMAPVLSDTVVEWIFPETTEVLPSPVSA
 SLFPGERLVGYGIVCDASLHISNPRSDKRRRYSMLHSQESGSSVFYHSQDDGPGLEGGDCAKNSGAPFIL
 GQAKNARLASGDSTTKHDLNLSQRRRAYSTNQITNHKPLPRATMASDPMPAAKRYPLRKARLQDLTNQTS
 LDVQRWQIDLQPLLNSGQDLNQPKLRGPGARRPSLLPQCQPFLPWGQETQAWSPVRERTSDSRSPGDL
 EPSHHPSAFETETSSDWDPPAESQERASPSRPATPAPVLGKALVKGLHDSQRLQWEVSFELGTPGPERGG
 AQDADLWSETFHHLAARAIIIRDFEQLAEREIEIQGSNRRYQVSALHTSKACNIIISKYTAFFVPVDVSKSR
 YLPTVVEYPNSGALRMLGSRALAQQWRGTSSGFRPQTMLGEDSAPGNMEASPTALFSEARSPGREKH
 GASEGPQRSLATNTLSSMKASENLFGSWLNLNKSRLLTRAAKGFLSKPLIKAVESTSGNQSFYDIPLVSL
 QLASGAFLLNEAFCEATHIPMEKLNKWTSPFTCHRVSLLTTRPSESKTPSPQLCTSSPPRHPSCDSFSLEPL
 AKGKLGLEPRAVVEHTGKLWATVVGLAWLEHSSASYFTEWELVAAKANSWLEQQEVEPEGRTQGLTKAAAR
 QLFVLLRHWDENLEFNMLCYNPNVY

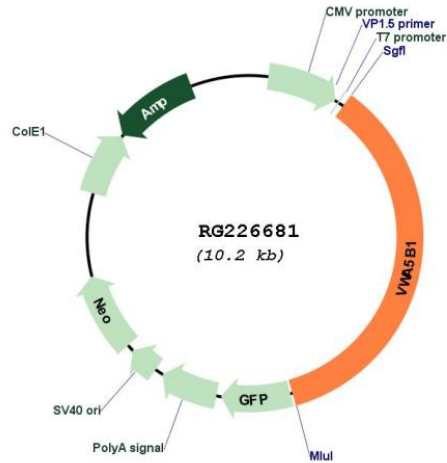
TRTRPLE - GFP Tag - V

Restriction Sites: SgfI-MluI

Cloning Scheme:

Cloning sites used for ORF Shutting:



Plasmid Map:


ACCN: NM_001039500

ORF Size: 3645 bp

OTI Disclaimer: The molecular sequence of this clone aligns with the gene accession number as a point of reference only. However, individual transcript sequences of the same gene can differ through naturally occurring variations (e.g. polymorphisms), each with its own valid existence. This clone is substantially in agreement with the reference, but a complete review of all prevailing variants is recommended prior to use. [More info](#)

OTI Annotation: This clone was engineered to express the complete ORF with an expression tag. Expression varies depending on the nature of the gene.

Components: The ORF clone is ion-exchange column purified and shipped in a 2D barcoded Matrix tube containing 10ug of transfection-ready, dried plasmid DNA (reconstitute with 100 ul of water).

Reconstitution Method:

1. Centrifuge at 5,000xg for 5min.
2. Carefully open the tube and add 100ul of sterile water to dissolve the DNA.
3. Close the tube and incubate for 10 minutes at room temperature.
4. Briefly vortex the tube and then do a quick spin (less than 5000xg) to concentrate the liquid at the bottom.
5. Store the suspended plasmid at -20°C. The DNA is stable for at least one year from date of shipping when stored at -20°C.

RefSeq: [NM_001039500.3](#)

RefSeq Size: 4475 bp

RefSeq ORF: 3648 bp

Locus ID: 127731

UniProt ID: [Q5TIE3](#)

Cytogenetics: 1p36.12