

Product datasheet for **RG226639**

DDX4 (NM_001142549) Human Tagged ORF Clone

Product data:

Product Type:	Expression Plasmids
Product Name:	DDX4 (NM_001142549) Human Tagged ORF Clone
Tag:	TurboGFP
Symbol:	DDX4
Synonyms:	VASA
Mammalian Cell Selection:	Neomycin
Vector:	pCMV6-AC-GFP (PS100010)
E. coli Selection:	Ampicillin (100 ug/mL)



[View online »](#)

ORF Nucleotide
Sequence:

>RG226639 representing NM_001142549
Red=Cloning site Blue=ORF Green=Tags(s)

TTTTGTAATACGACTCACTATAGGGCGGCCGGAATTCGTCGACTGGATCCGGTACCGAGGAGATCTGCC
GCCGCGATCGCC

ATGGGAGATGAAGATTGGGAAGCAGAAATCAACCCTCATATGTCTTCTATGTTCCCATATTTGAGAAGG
ATAGGTATTCTGGAGAAAATGGAGACAATTTAACAGGACTCCAGCTTCATCATCAGAAATGGATGATGG
ACCTTCTCGAAGAGATCATTTCATGAAAAGTGGATTTGCCTCTGGGCGGAATTTTGGAAACAGAGATGCT
GGTGAGTGAATAAGCGAGATAATACATCCACAATGGGTGGTTTTGGAGTTGAAAGAGTTTTGGAAACA
GAGGTTTTTCAAACAGCAGGTTTGAAGATGGTGATAGCTCTGGTTTTCTGGAGAGAGTCTAGTAATGACTG
CGAAGATAATCCAACACGGAACAGAGGGTTTTCCAAGAGAGGCGATAATGACTTAGACCCAGACGAATGT
ATGCAGCGCACTGGTGGCCTTTTTGGTTCTAGAAGACCAGTATTAAGTGGCACAGGTAATGGTGACTT
CTCAAAGCAGAAGTGGCAGTGAAGTGAACGAGGTGGTTACAAAGGTTTAAATGAAGAAGTAATAACAGG
CTCTGAAAGAATTCTTGAAGTCAGAAGCAGAAGGAGGAGAAAGTAGTGATACTCAAGGACCAAAAGTG
ACCTACATACCCCTCCTCCACCTGAGGATGAGGACTCCATCTTTCACATTATCAGACAGGCATAAACT
TCGACAAATACGACACTATTCTTGTGGAAGTGTCTGGACATGATGCACCACCAGCAATTCGACTTTTGA
AGAAGCTAATCTCTGTCAGACACTGAATAACAACATTGCTAAAGCTGGTTATACTAAGCTTACTCCTGTG
CAAAAATACAGTATTCTATCATACTTGCAGGACGAGATTTGATGGCTTGCCTCAAACAGGGTCTGGGA
AGACTGCGGCTTTTCTCTACCAATTTTGGCTCATATGATGCATGATGGAATAACTGCCAGTCGTTTTAA
AGAGTTGACGGAACAGAGTGTATTATTGTAGCACCAACTCGAGAATTGGTCAACAAGATTTATTTGGAA
GCCAGAAAATTTCTTTTGGGACTTGTGTAAGAGCTGTTGTTATATATGGGGAAACCCAGCTGGGACATT
CAATTCGACAAAATAGTACAAGGCTGTAATATATTATGTGCTACTCCTGGAAGACTGATGGATATCATAGG
CAAAGAAAAGATTGGTCTCAAACAGATCAAATACTTAGTTTTGGATGAAGCTGATCGCATGTTGGATATG
GGTTTTGGTCCAGAAATGAAGAAGTTAATTTCTTCCAGGAAATGCCATCAAAGGAACAGCGCAAAACCC
TTATGTTCAAGTCAACTTTTCCAGAGGAAATCAAAGGTTGGCTGCAGAGTTTTTAAAGTCAAATATCT
GTTTGTGCTGTTGGACAAGTGGTGGAGCATGTAGAGATGTTCCAGCAGACCGTTCTCCAAGTTGGCCAG
TTCTCAAAAAGAGAGAAGCTCGTTGAAATCTGCGAAACATAGGGGATGAAAGAATATGGTCTTTGTTG
AACTAAGAAAAAGCAGATTTTATTGCAACTTTCTTTGTCAAGAAAAAATATCAACTACAAGTATTCA
TGGTGATCGGGAACAGAGAGAGCGGGAGCAAGCTCTGGAGATTTTCGCTTTGAAAGTGCCAGTTCCT
GTTGCTACTTCAGTAGCTGCCAGAGGCTGGATATTGAAAATGTGCAACATGTTATCAATTTTGATCTTC
CTTCTACCATTGATGAATATGTTTCATCGAATTGGGCGTACTGGTCTGTTGGGAATACTGGCAGAGCAAT
TTCTTTTTTGTATCTGAATCGGATAACATTTAGCACAGCCTCTAGTAAAAGTATTGACAGATGCTCAA
CAGGATGTTCTGCATGTTGGAAGAAATTCCTTTAGTACATACATTCTGGCTTCAGTGGTAGTACAA
GAGGAAACGTGTTTGCATCAGTTGATACCAGAAAGGGCAAGAGCACTTTGAACACAGCTGGGTTTTCTTC
TTCACAAGCTCCCAATCCAGTAGATGATGAGTCATGGGAT

ACGCGTACGCGGCCGCTCGAG - GFP Tag - GTTTAA

Protein Sequence: >RG226639 representing NM_001142549
 Red=Cloning site Green=Tags(s)

MGDEDWEAEINPHMSSYVPIFEKDRYSGENDNFNRTPASSEMDDGPSRRDHFMKSGFASGRNFGNRDA
 GECNKRNDTSTMGGFVVGKSFNGRGSNSRFEDGDSSGFWRSSNDCEPNPTRNRGFSKRGDNDLDPDEC
 MQRTGGLFGSRRPVLSGTGNGDTSQSRSGSGSERGGYKGLNEEVITGSGKNSWKSEAEGGESDQTQPKV
 TYIPPPPEDEDSIFAHYQTGINFDKYDTILVEVSGHDAPPAILTFEEANLCQTLNNNIAKAGYTKLTPV
 QKYSIPIILAGRDLMACAQTGSGKTAFFLLPILAHMMHDGITASRFKELQEPECIIVAPTRELVNKIYLE
 ARKFSFGTCVRAVVIYGGTQLGHSIRQIVQGCNLCATPGRLMDIIGKEKIGLKQIKYLVLDEADRLDM
 GFGPEMKKLISCPGMPKSKEQRQTLMFSAITFPEEQRLAAEFLKSNYLFVAVGQVGGACRDVQQTVLQVQ
 FSKREKLVEILRNIGDERTMVFVETKKKADFIATFLCQEKISTTSIHGDREQREREQALGDFRFGKCPVL
 VATSVAARGLDIENVQHVINFDL PSTIDEYVHRIGRTGRCGNTGRAISFFDLESDNHLAQPLVKVL TDAQ
 QDVPAWLEEIAFSTYIPGFSGSTRGNV FASVDTRK GKSTLNTAGFSSSQAPNPVDES WD

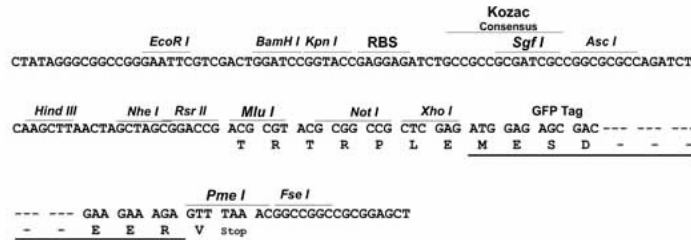
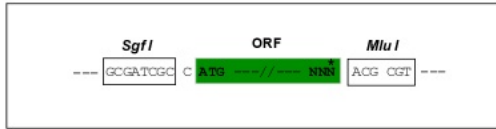
TRTRPLE - GFP Tag - V

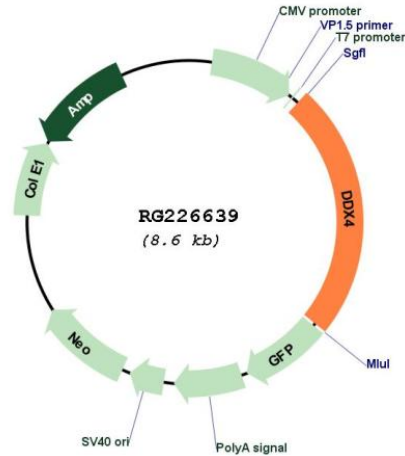
Restriction Sites:

Sgfl-MluI

Cloning Scheme:

Cloning sites used for ORF Shuttling:



Plasmid Map:


ACCN: NM_001142549

ORF Size: 2070 bp

OTI Disclaimer: The molecular sequence of this clone aligns with the gene accession number as a point of reference only. However, individual transcript sequences of the same gene can differ through naturally occurring variations (e.g. polymorphisms), each with its own valid existence. This clone is substantially in agreement with the reference, but a complete review of all prevailing variants is recommended prior to use. [More info](#)

OTI Annotation: This clone was engineered to express the complete ORF with an expression tag. Expression varies depending on the nature of the gene.

Components: The ORF clone is ion-exchange column purified and shipped in a 2D barcoded Matrix tube containing 10ug of transfection-ready, dried plasmid DNA (reconstitute with 100 ul of water).

Reconstitution Method:

1. Centrifuge at 5,000xg for 5min.
2. Carefully open the tube and add 100ul of sterile water to dissolve the DNA.
3. Close the tube and incubate for 10 minutes at room temperature.
4. Briefly vortex the tube and then do a quick spin (less than 5000xg) to concentrate the liquid at the bottom.
5. Store the suspended plasmid at -20°C. The DNA is stable for at least one year from date of shipping when stored at -20°C.

RefSeq: [NM_001142549.1](#), [NP_001136021.1](#)

RefSeq Size: 2778 bp

RefSeq ORF: 2073 bp

Locus ID: 54514

UniProt ID: [Q9NQI0](#)

Cytogenetics: 5q11.2

Gene Summary: DEAD box proteins, characterized by the conserved motif Asp-Glu-Ala-Asp (DEAD), are putative RNA helicases. They are implicated in a number of cellular processes involving alteration of RNA secondary structure such as translation initiation, nuclear and mitochondrial splicing, and ribosome and spliceosome assembly. Based on their distribution patterns, some members of this family are believed to be involved in embryogenesis, spermatogenesis, and cellular growth and division. This gene encodes a DEAD box protein, which is a homolog of VASA proteins in *Drosophila* and several other species. The gene is specifically expressed in the germ cell lineage in both sexes and functions in germ cell development. Multiple transcript variants encoding different isoforms have been found for this gene. [provided by RefSeq, Oct 2009]