

Product datasheet for **RG226635**

FAM53C (NM_001135647) Human Tagged ORF Clone

Product data:

Product Type:	Expression Plasmids
Product Name:	FAM53C (NM_001135647) Human Tagged ORF Clone
Tag:	TurboGFP
Symbol:	FAM53C
Synonyms:	C5orf6
Mammalian Cell Selection:	Neomycin
Vector:	pCMV6-AC-GFP (PS100010)
E. coli Selection:	Ampicillin (100 ug/mL)
ORF Nucleotide Sequence:	>RG226635 representing NM_001135647 Red=Cloning site Blue=ORF Green=Tags(s)

TTTTGTAATACGACTCACTATAGGGCGCCGGGAATTCGTCGACTGGATCCGGTACCGAGGAGATCTGCC
GCC**CGATCGCC**

ATGATAACCCGTGATCACTGAGCAGCTACAGAAGCAGACTCTGGATGAGCTGAAATGCACACGCTTCAGCA
TCAGTCTGCCTTTGCCTGATCATGCAGACATCTCCAAGTGTGGAACTCTTCCAGCTTGTGTCTGAAGG
TGCTTCTGGAGGGCCCTGCCCACTGTTCTGTGCTGAGTTCAGGACAGCCTCAACTCAGCTACCAT
CCCTCAGGCTGAGCCTGCACCTCAGACCACCCAGTGGGAACTCCCAAGGAGCAGCCTTCTCCC
AAGTCTAAGACCTGAGCCCCAGATCCAGAGAAGCTTCTGTGCCCTGCCCTCCATCCAAGAGGCA
CTGCCGCTCACTCTCAGTGGCCGTGGACCTGTCTCGTGGCAGCCGGTGTGGCGGCCGCCCTCCAAG
CTGTGGACTCCCATAAAGCACCGGGCAGTGGTGGAGGGGTGGCCGCAGGTGCCTCACCAGAGCCCC
CAAAGCGGTCTCCAGCCTCAGTTCCTCCAAGCTCCAGTGCCTTCTCAATGTGCCAGCTCACAG
ACCCTACAGCCCTCCTTCTCAGCCTGGCCCTGGCCCAAGATTCCTCTCGACCTGCGCCGCTCCCT
CAAAGTGGCTCCTGGGAGAGTGATGCTGAGTCTTGTACCTTGCCACCTCAGCGCCGCTTCTCCCTGT
CACCCAGTCTGGGCCCGCAGGCAAGCCGCTTCTGGCCCTGCCCGGAGCTCTCCCGCATCTCCCCAGA
GCTGCCCTGGCGACCTCGAGTCTCCGCAACCTCCCCGAAGCCGCTCACAGCCTTGTGATCTGGATGCC
CGCAAACTGGGTCAAGCGGCCACGAGGAAGACCCCGGCTCTGCGGCTTCTGTTGGACTTTGACA
AGATGAATCAGAAACCATACTCAGGAGTCTTTGTCTCCAAGAAACAGCCCGGAAGGCAGCAGCATCTC
TCCACCATGGTTCATGGCTGTAGCCCCCACCCTCTCTGCTTCTGACGCCCCACTGGGGTCTCTCC
CAGGTGCTGAGTGAAGCGAAGAGGAGGAGGGGCTGTGCGGTGGGTGGCAGGCGCTGAGCAAGC
GGACACTGTGCCAGCGGACTTTGGGACCTGGACTTGAATTTGATTGAGGAAAAC

ACCGTACGCGGCCGCTCGAG - GFP Tag - GTTTAA



[View online »](#)

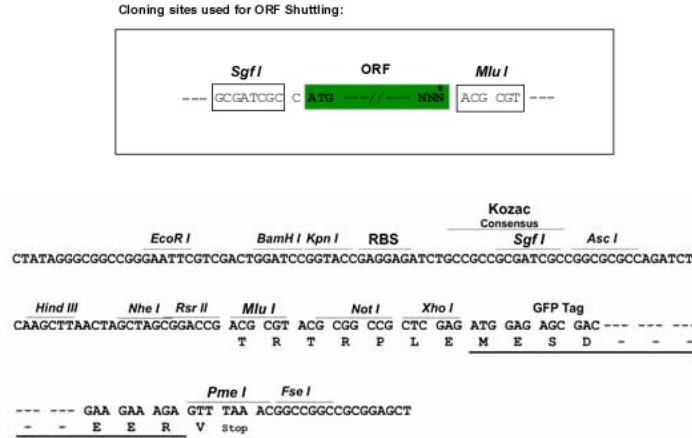
Protein Sequence: >RG226635 representing NM_001135647
 Red=Cloning site Green=Tags(s)

MITLITEQLKQKQTLDELKCTRFSISLPLPDHADISNCGNSFQLVSEGASWRGLPHCSAEFQDSLNF SYH
 PSGLSLHLRPPSRGNSPKEQPF SQVLRPEPPDPEKLPVPPAPPSKRHCRSL SVPVDLSRWQPVWRPAPSK
 LWTP IKHRGSGGGGGPQVPHQSPPKRVSSLRFLQAPSASSQCAP AHRPYSPPFFSLALAQDSSRCAASP
 QSGSWESDAESLSPCPPQRRFSLSPSLGPQASRFLPSARSSPASSPELPWRPRGLRNLPRSRSQPCDLDA
 RKTGVKRRHEEDPRRLRP SLDFDKMNQKPYSGGLCLQETAREGSSISPPWFMACSPPLSASC SPTGGSS
 QVLSESEEEEEGAVRWGRQALS KRTL CQRDFGDLNL IEEN

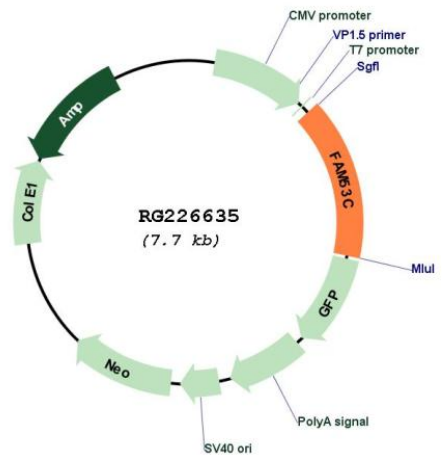
TRTRPLE - GFP Tag - V

Restriction Sites: SgfI-MluI

Cloning Scheme:



Plasmid Map:



ACCN: NM_001135647

ORF Size:	1176 bp
OTI Disclaimer:	The molecular sequence of this clone aligns with the gene accession number as a point of reference only. However, individual transcript sequences of the same gene can differ through naturally occurring variations (e.g. polymorphisms), each with its own valid existence. This clone is substantially in agreement with the reference, but a complete review of all prevailing variants is recommended prior to use. More info
OTI Annotation:	This clone was engineered to express the complete ORF with an expression tag. Expression varies depending on the nature of the gene.
Components:	The ORF clone is ion-exchange column purified and shipped in a 2D barcoded Matrix tube containing 10ug of transfection-ready, dried plasmid DNA (reconstitute with 100 ul of water).
Reconstitution Method:	<ol style="list-style-type: none">1. Centrifuge at 5,000xg for 5min.2. Carefully open the tube and add 100ul of sterile water to dissolve the DNA.3. Close the tube and incubate for 10 minutes at room temperature.4. Briefly vortex the tube and then do a quick spin (less than 5000xg) to concentrate the liquid at the bottom.5. Store the suspended plasmid at -20°C. The DNA is stable for at least one year from date of shipping when stored at -20°C.
RefSeq:	NM_001135647.2
RefSeq Size:	4419 bp
RefSeq ORF:	1179 bp
Locus ID:	51307
UniProt ID:	Q9NYF3
Cytogenetics:	5q31.2
Gene Summary:	The protein encoded by this gene belongs to the FAM53 protein family. FAM53 protein family members bind to a transcriptional regulator that modulates cell proliferation. Alternative splicing results in multiple transcript variants. [provided by RefSeq, Apr 2017]