

Product datasheet for **RG226632**

NEDD4 2 (NEDD4L) (NM_001144968) Human Tagged ORF Clone

Product data:

Product Type:	Expression Plasmids
Product Name:	NEDD4 2 (NEDD4L) (NM_001144968) Human Tagged ORF Clone
Tag:	TurboGFP
Symbol:	NEDD4 2
Synonyms:	hNEDD4-2; NEDD4-2; NEDD4.2; PVNH7; RSP5
Mammalian Cell Selection:	Neomycin
Vector:	pCMV6-AC-GFP (PS100010)
E. coli Selection:	Ampicillin (100 ug/mL)



[View online »](#)

**ORF Nucleotide
Sequence:**

>RG226632 representing NM_001144968
 Red=Cloning site Blue=ORF Green=Tags(s)

TTTTGTAATACGACTCACTATAGGGCGGCCGGAATTCGTCGACTGGATCCGGTACCGAGGAGATCTGCC
 GCCCGGATCGCC

ATGAGACGCTCGCATTGAGCAGGGAGAGTCCCGTATTCTCAGAGTAAAAGTTGTTTCTGGAATTGATC
 TCGCCAAAAGGACATCTTTGGAGCCAGTGATCCGTATGTGAACTTTTCATTGTACGTAGCGGATGAGAA
 TAGAGAATTGCTTTGGTCCAGACAAAAACAATTAAGGACACTGAACCCAAAATGGAATGAAGAATTT
 TATTTTCAGGGTAAACCCATCTAATCACAGACTCCTATTTGAAAGTATTTGACGAAAATAGACTGACACGAG
 ACGACTTCTGGGCCAGGTGGACGTGCCCTTAGTCACCTCCGACAGAAGATCCAACCTGGAGCGACC
 CTATACATTTAAGGACTTCTCCTCAGACCAAGAAGTCATAAGTCTCGAGTTAAGGGATTTTTCGATTG
 AAAATGGCCTATATGCCAAAAATGGAGGTCAAGATGAAGAAAACAGTGACCAGAGGGATGACATGGAGC
 ATGGATGGGAAGTTGTTGACTCAAATGACTCGGCTTCTCAGCACCAAGAGGAACCTCCTCCTCCTCTCT
 GCCTCCCGGGTGGGAAGAAAAGTGGACAATTTAGGCCGAACCTACTATGTCAACCACAACAACCGGACC
 ACTCAGTGGCACAGACCAAGCCTGATGGACGTGTCTCGGAGTCCGACAATAACATCAGACAGATCAACC
 AGGAGGCAGCACACCGGCGCTTCCGCTCCCGCAGGCACATCAGCGAAGACTTGGAGCCCGAGCCCTCGGA
 GGGCGGGGATGTCCCGAGCCTTGGGAGACCATTTAGAGGAAGTGAATATCGCTGGAGACTCTCTCGGT
 CTGGCTGTGCCCCACCACCGCCTCCCGAGGATCTCGGACCAGCCCTCAGGAGCTGTGAGGAACTAA
 GCAGAAGGCTTCAGATCACTCCAGACTCCAATGGGGAACAGTTTCAGCTCTTTGATTCAAAGAGAACCCTC
 CTAAGGTTGAGGTATGCAGTGTACCCGACGAGTTCAGAACAGGGCCATCTACCACCGCCAGTGCC
 CCAGCTGGGAGAGCGGTTTCATCAACTGTACGGGTGGTGAAGAACCAACGCCATCAGTGGCCTATGTAC
 ATACCACGCGGGTCTGCCTTCAGGCTGGGAAGAAAAGATGCTAAGGGGCGCACACTACTATGTCAA
 TCATAACAATCGAACCAACTTGGACTCGACCTATCATGCAGCTTGCAGAAGATGGTGGTCCGGATCA
 GCCAAAAACAGTAACAACCATCTAATCGAGCCTCAGATCCGCGGCCCTGTAGCCTCAGCTCGCCAACAG
 TAACCTTATCTGCCCGCTGGAGGGTGCCAAGGACTCACCCGTACGTGGGCTGTGAAAGACACCCTTTC
 CAACCCACAGTCCCACAGCCATCACCTTACAACCTCCCCAAAACCACAACAAGTACACAGAGCTTTC
 TTGCCACCGGCTGGGAAATGAGGATAGCGCCAAACGGCCGCCCTTCTTATTGATCATAACACAAAGA
 CTACAACCTGGGAAGATCCAGTTTGAATTTCCAGTACATATGCGGTCAAAGACATCTTAAACCCCAA
 TGACCTTGGCCCCCTTCTCCTGGCTGGGAAGAAAAGAAATTCAGTGGATGGCCGAACGTTTTATATTGAT
 CATAATAGCAAAATTAAGCAGAAATATGACTACTTCAGGAAGAAATTAAGAAACCTGCTGATATCCC
 CTAAGGTTTGAATGAACTTACAGAAATAACATATTTGAAGAGTCCATCGGAGAATTATGTCGGTG
 AAAAGACCAGATGCTCTAAAAGCTAGACTGTGGATTGAGTTTGAATCAGAGAAAGGCTTGGACTATGGGG
 GTGTGGCCAGAGAATGGTTCTTACTGTCCAAGAGATGTTCAACCCCTACTACGGCCTCTTTGAGTA
 CTCTGCCACGGACAACACCCCTCAGATCAACCCTAATTCAGGCTCTGTAATGAGGATCATTGTCC
 TACTTCACTTTTATTGGAAGAGTTGCTGGTCTGGCCGATTTTCATGGGAAGCTCTTAGATGGTTTCTTCA
 TTAGACCATTTTACAAGATGATGTTGGGAAAGCAGATAACCCTGAATGACATGGAATCTGTGGATAGTGA
 ATATTACAACCTTTTGAATGGATCCTGGAGAATGACCCTACTGAGCTGGACCTCATGTTCTGCATAGAC
 GAAGAAAACCTTTGGACAGACATATCAAGTGGATTTGAAGCCCAATGGGTGAGAAAATGTTGTCACAAATG
 AAAACAAAAGGGAATATATCGACTTAGTCATCCAGTGGAGATTTGTGAACAGGGTCCAGAAGCAGATGAA
 CGCCTTCTGGAGGGATTCACAGAACTACTTCTATTGATTTGATTAAAATTTTTATGAAAAATGAGCTG
 GAGTTGCTCATGTGCGCCTCGGTGATGTGGATGTGAATGACTGGAGACAGCATTCTATTTACAAGAACG
 GCTACTGCCAAAACCCCGTCATTAGTGGTTCTGGAAGGCTGTGCTACTCATGGACGCCGAAAAGCG
 TATCCGGTACTGCAGTTTGTACAGGGACATCGCGAGTACCTATGAATGGATTTGCCGAACCTTTATGGT
 TCCAATGGTCTCAGCTGTTTACAATAGAGCAATGGGCGAGTCTGAGAACTGCCAGAGCTCACACAT
 GCTTTAATCGCCTGACTTACCTCCATATGAAACCTTTGAAGATTTACGAGAGAACTTCTCATGGCCGT
 GGAATGCTCAAGGATTTGAAGGGTGGAT

ACGCGTACGCGGCCGCTCGAG – GFP Tag – GTTTAA

Protein Sequence: >RG226632 representing NM_001144968
Red=Cloning site Green=Tags(s)

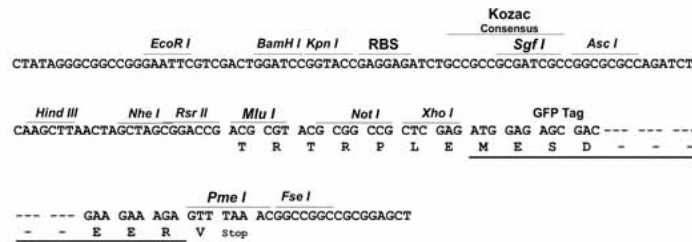
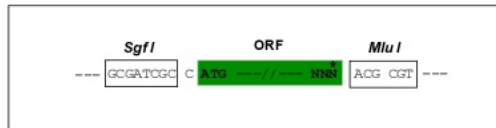
MRRLAFEQGESRILRVKVVSGIDLAKKDIFGASDPYVKLSLYVADENRELALVQTKTIKTLNPKWNEEF
 YFRVNPNSHRLLEFVFDENRLTRDDFLGQVDVPLSHLPTEDPTMERPYTFKDFLLRPRSHKSRVKGFLRL
 KMAYMPKNGGQDEENSQDRDDMEHGWEVVDSDNSASQHQEELPPPPLPGWEEKVDNLGRITYVYVHNHNR
 TQWHRPSLMDVSESDNNIRQINQEAHRRFRSRRHISEDLEPEPSEGGDVPPEWETISEEVNIAGDSL
 LALPPPPASPGSRTSPQELSEELSRRLQITPDSNGEQFSSLIQREPSSRLRSCSVTDAVAEQHLP
 PAGRARSTVTGGEEPTPSVAYVHTTTPGLPSGWEERKDAKGRYYVYVHNHNRTTTTWTRPIMQ
 LAEDGASGS ATNSNNHLIEPQIRRPRLSSPTVTL SAPLEGAKDSPVRRVAVKDTLSNPQSPQSPYNSPKPQHKVTQSF
 LPPGWEMRIAPNGRPFIDHNTKTTT WEDPRLKFPVHMRSKTSLNPNDLGPLPGWEERIHLDGRTFYID
 HNSKITQWEDPRLQNPAITGPAVPYSREFKQKYDYFRKCLKKPADIPNRFEMKLRHNNIFEESYRRIMSV
 KRPDVVKARLWIEFESEKGLDYGGVAREWFFLLSKEMFNYYGLFEYSATDNYTLQINPNSGLCNEDHLS
 YFTFIGRVAGLAVFHGKLLDGGFIRPFYKMLGKQITLNDMESVDSEYNSLKWILENDPTELDLMFCID
 EENFGQTYQVDLKPNGSEIMVTNENKREYIDLVIQWRFVNRVQKQMNAFLEGFTELLPIDLIKIFDENEL
 ELLMCGLGDVDVNDWRQHSIYKNGYCPNHPVIQWFKAVLLMDAEKRIRLLQFVTGTSRVP
 MNGFAELYG SNGPQLFTIEQWGSPEKLPRAHTCFNRLDLPPYETFEDLREKLLMAVENAQGFEGVD

TRTRPLE – GFP Tag – V

Restriction Sites: SgfI-MluI

Cloning Scheme:

Cloning sites used for ORF Shuttling:

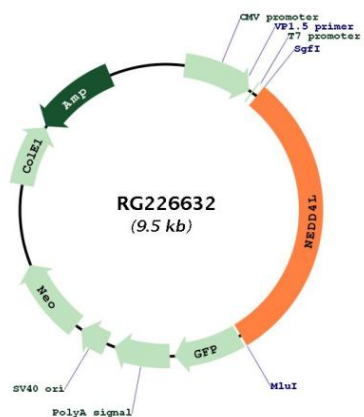


ACCN: NM_001144968

ORF Size: 2901 bp

OTI Disclaimer:	The molecular sequence of this clone aligns with the gene accession number as a point of reference only. However, individual transcript sequences of the same gene can differ through naturally occurring variations (e.g. polymorphisms), each with its own valid existence. This clone is substantially in agreement with the reference, but a complete review of all prevailing variants is recommended prior to use. More info
OTI Annotation:	This clone was engineered to express the complete ORF with an expression tag. Expression varies depending on the nature of the gene.
Components:	The ORF clone is ion-exchange column purified and shipped in a 2D barcoded Matrix tube containing 10ug of transfection-ready, dried plasmid DNA (reconstitute with 100 ul of water).
Reconstitution Method:	<ol style="list-style-type: none"> 1. Centrifuge at 5,000xg for 5min. 2. Carefully open the tube and add 100ul of sterile water to dissolve the DNA. 3. Close the tube and incubate for 10 minutes at room temperature. 4. Briefly vortex the tube and then do a quick spin (less than 5000xg) to concentrate the liquid at the bottom. 5. Store the suspended plasmid at -20°C. The DNA is stable for at least one year from date of shipping when stored at -20°C.
RefSeq:	NM_001144968.2
RefSeq Size:	8378 bp
RefSeq ORF:	2904 bp
Locus ID:	23327
UniProt ID:	Q96PU5
Cytogenetics:	18q21.31
Protein Families:	Druggable Genome
Protein Pathways:	Endocytosis, Ubiquitin mediated proteolysis
Gene Summary:	This gene encodes a member of the Nedd4 family of HECT domain E3 ubiquitin ligases. HECT domain E3 ubiquitin ligases transfer ubiquitin from E2 ubiquitin-conjugating enzymes to protein substrates, thus targeting specific proteins for lysosomal degradation. The encoded protein mediates the ubiquitination of multiple target substrates and plays a critical role in epithelial sodium transport by regulating the cell surface expression of the epithelial sodium channel, ENaC. Single nucleotide polymorphisms in this gene may be associated with essential hypertension. Alternatively spliced transcript variants encoding multiple isoforms have been observed for this gene. [provided by RefSeq, Mar 2012]

Product images:



Circular map for RG226632