

Product datasheet for **RG226595**

NEDD4 2 (NEDD4L) (NM_001144965) Human Tagged ORF Clone

Product data:

Product Type:	Expression Plasmids
Product Name:	NEDD4 2 (NEDD4L) (NM_001144965) Human Tagged ORF Clone
Tag:	TurboGFP
Symbol:	NEDD4L
Synonyms:	hNEDD4-2; NEDD4-2; NEDD4.2; PVNH7; RSP5
Mammalian Cell Selection:	Neomycin
Vector:	pCMV6-AC-GFP (PS100010)
E. coli Selection:	Ampicillin (100 ug/mL)



[View online »](#)

ORF Nucleotide
Sequence:

>RG226595 representing NM_001144965
Red=Cloning site Blue=ORF Green=Tags(s)

TTTTGTAATACGACTCACTATAGGGCGGCCGGGAATTCGTCGACTGGATCCGGTACCGAGGAGATCTGCC
GCCCGCATCGCC

ATGGAGCGACCCTATACATTTAAGGACTTCTCCTCAGACCAAGAAGTCATAAGTCTCGAGTTAAGGGAT
TTTTGCGATTGAAAATGGCCTATATGCCAAAAATGGAGGTCAAGATGAAGAAAACAGTGACCAGAGGGA
TGACATGGAGCATGGATGGGAAGTTGTTGACTCAAATGACTCGGCTTCTCAGCACCAGGAACTTCTCT
CCTCCTCCTCGCTCCCGGGTGGGAAGAAAAGTGGACAATTTAGGCCGAACTTACTATGTCAACCACA
ACAACCGGACCACTCAGTGGCACAGACCAAGCCTGATGGACGTGTCTCGGAGTCGGACAATAACATCAG
ACAGATCAACCAGGAGGCAGCACACCGGCGCTTCCGCTCCCGCAGGCACATCAGCGAAGACTTGGAGCCC
GAGCCCTCGGAGGGCGGGATGTCCCGAGCCTTGGGAGACCATTCAGAGGAAGTGAATATCGCTGGAG
ACTCTCTCGGTCTGGCTCTGCCCCACCACCGGCTCCCGAGGATCTCGGACCAGCCCTCAGGAGCTGTC
AGAGGAACTAAGCAGAAGGCTTCAGATCACTCCAGACTCCAATGGGGAACAGTTCAGCTCTTTGATTCAA
AGAGAACCCTCCTCAAGTTGAGGTTCATGCAAGTGTACCAGCAGCAGTTGCAGAACAGGGCCATCTACCAC
CGCCAGTGCCCCAGCTGGGAGAGCGCGTTCATCAACTGTCACGGGTGGTGGAGGAACCAACGCCATCAGT
GGCCTATGTACATACCACGCCGGTCTGCCTTCAGGCTGGGAAGAAAAGAAAAGTGTAAAGGGGCGCACA
TACTATGTCAATCATAACAATCGAACCAACTTGGACTCGACCTATCATGCAGCTTGCAGAAGATGGTG
CGTCCGGATCAGCCACAAACAGTAACAACCATCTAATCGAGCCTCAGATCCGCCGGCCTCGTAGCCCTCAG
CTCGCCAACAGTAACCTTATCTGCCCGCTGGAGGGTCCAAAGGACTCACCCGTACGTGGGCTGTGAAA
GACACCCCTTCCAACCCACAGTCCCACAGCCATCACCTTACAACCTCCCCAACCCACAACACAAAGTCA
CACAGAGCTTCTTGCACCCGCTGGGAAATGAGGATAGCGCAAACGGCCGGCCCTTCTTCATTGATCA
TAACACAAAGACTACAACCTGGGAAGATCCACGTTTGAATTTCCAGTACATATGCGGTCAAAGACATCT
TTAAACCCCAATGACCTTGGCCCTTCTCCTGGCTGGGAAGAAAAGAAATTCAGTTGGATGGCCGACGT
TTTATATTGATCATAATAGCAAAATTAAGTGGGAAGACCCAAAGACTGCAGAACCAGCTATTACTGG
TCCGGCTGTCCCTTACTCCAGAGAATTTAAGCAGAAATATGACTACTTCAGGAAGAAATTAAGAAACCT
GCTGATATCCCCAATAGGTTTGAATGAAACTTCACAGAAATAACATATTTGAAGAGTCTATCGGAGAA
TTATGTCCGTGAAAAGACCAGATGTCCTAAAAGCTAGACTGTGGATTGAGTTTGAATCAGAGAAAGGTCT
TGACTATGGGGGTGGCCAGAGAATGGTCTTCTTACTGTCAAAGAGATGTTCAACCCCTACTACGGC
CTCTTTGAGTACTCTGCCACGGACAACACACCCTTCCAGTCAACCCTAATTCAGGCCTCTGTAATGAGG
ATCATTGTCTACTTCACTTTTATTGGAAGAGTTGCTGGTCTGGCCGATTTTCATGGGAAGCTCTTAGA
TGGTTTCTTATTAGACCATTTACAAGATGATGTTGGGAAGCAGATAACCCTGAATGACATGGAATCT
GTGGATAGTGAATATTACAACCTTTGAAATGGATCCTGGAGAATGACCCCTACTGAGCTGGACCTCATGT
TCTGCATAGACGAAGAAAACCTTTGGACAGACATATCAAGTGGATTTGAAGCCCAATGGGTGAGAAATAAT
GGTCACAAATGAAAACAAAAGGGAATATATCGACTTAGTCATCCAGTGGAGATTTGTGAACAGGGTCCAG
AAGCAGATGAACGCCTTCTTGGAGGGATTCACAGAACTACTTCTATTGATTTGATTAATTTTGGATG
AAAATGAGCTGGAGTTGCTCATGTGCGGCTCGGTGATGTGGATGTGAATGACTGGAGACAGCATTCTAT
TTACAAGAACGGCTACTGCCCAAACACCCCGTATTGAGTGGTCTGGAAGGCTGTGCTACTCATGGAC
GCCGAAAAGCGTATCCGGTTACTGCAGTTTGTACAGGGACATCGCGAGTACCTATGAATGGATTTGCCG
AACTTTATGGTTCCAATGGTCTCAGCTGTTTACAATAGAGCAATGGGGCAGTCTGAGAAAACCTGCCAG
AGCTCACACATGCTTTAATCGCCTTGACTTACCTCCATATGAAACCTTTGAAGATTTACGAGAGAAACT
CTCATGGCCGTGGAAAATGCTCAAGGATTTGAAGGGTGGAT

ACCGTACGCGGCCGCTCGAG – GFP Tag – GTTTAA

Protein Sequence: >RG226595 representing NM_001144965
Red=Cloning site Green=Tags(s)

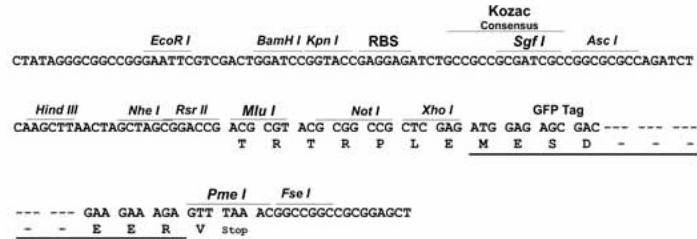
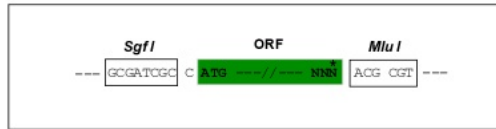
```
MERP YTFKDFLLRPRSHKSRVKGFLRLK MAYMPKNGGQDEENS DQRDDMEHGWEV VDSNDSASQHQEELP  
PPPLPPGWEEKVDNLGR TYVNHNNRRTTQWHRPSLMDV SSES DNNIRQINQEAAHRRFRSRRHISEDLEP  
EPSEGGDVPEPWETISEEVNIAGDSLGLALPPPASPGRSRTSPQELSEELSRRLQITPDSNGEQFSSLIQ  
REPSSRLRSCSVTDAVAEQGHLPPPSAPAGRARSSTVTGGEEPTPSVAYVHTTPGLPSGWEERKDAKGR  
TYVNHNNRRTTTWTRPIMQLAEDGASGSATNSNNHLIEPQIRRPRLSSPTVTL SAPLEGAKDSPVRRRAVK  
DTLSNPQSPQPSYNSPKPQHKVTQSFLPPGWEMRIAPNGRPFIDHNTKTTTWEDPRLKFPVHMRSKTS  
LNPNDLGPLPPGWEERIHLDGRTFYIDHNSKITQWEDPRLQNP AITGPAVPYSREFKQKYDYFRKLLKKP  
ADIPNRFEMKLHRNNIFEESYRRIMSVKRPDVLKARLWIEFESEKGLDYGGVAREWFFLLSKEMFNPHYG  
LFEYSATDNYTLQINPNSGLCNEDHLSYFTFIGRVAGLAVFHGKLLDGGFFIRPFYKMMLGKQITLNDMES  
VDSEYYNSLKWILENDPTELDLMFCIDEENFGQTYQVDLKPNGSEIMVTNENKREYIDLVIQWRVNRVQ  
KQMNAFLEGFTELLPIDLIKIFDENELELLMCGLGDVDVNDWRQHSIYKNGYCPNHPVIQWFKAVLLMD  
AEKRIRLLQFVTGTSRVP MNGFAELYGSNGPQLFTIEQWGSPEKLPRAHTCFNRLDLP PYETFEDLREKL  
LMAVENAQGFEGVD
```

TRTRPLE - GFP Tag - V

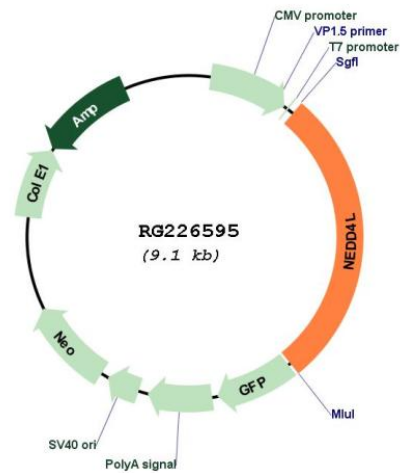
Restriction Sites: Sgfl-Mlul

Cloning Scheme:

Cloning sites used for ORF Shutting:



Plasmid Map:



ACCN:	NM_001144965
ORF Size:	2562 bp
OTI Disclaimer:	The molecular sequence of this clone aligns with the gene accession number as a point of reference only. However, individual transcript sequences of the same gene can differ through naturally occurring variations (e.g. polymorphisms), each with its own valid existence. This clone is substantially in agreement with the reference, but a complete review of all prevailing variants is recommended prior to use. More info
OTI Annotation:	This clone was engineered to express the complete ORF with an expression tag. Expression varies depending on the nature of the gene.
Components:	The ORF clone is ion-exchange column purified and shipped in a 2D barcoded Matrix tube containing 10ug of transfection-ready, dried plasmid DNA (reconstitute with 100 ul of water).
Reconstitution Method:	<ol style="list-style-type: none">1. Centrifuge at 5,000xg for 5min.2. Carefully open the tube and add 100ul of sterile water to dissolve the DNA.3. Close the tube and incubate for 10 minutes at room temperature.4. Briefly vortex the tube and then do a quick spin (less than 5000xg) to concentrate the liquid at the bottom.5. Store the suspended plasmid at -20°C. The DNA is stable for at least one year from date of shipping when stored at -20°C.
RefSeq:	NM_001144965.2
RefSeq Size:	8388 bp
RefSeq ORF:	2565 bp
Locus ID:	23327
UniProt ID:	Q96PU5
Cytogenetics:	18q21.31
Protein Families:	Druggable Genome
Protein Pathways:	Endocytosis, Ubiquitin mediated proteolysis
Gene Summary:	This gene encodes a member of the Nedd4 family of HECT domain E3 ubiquitin ligases. HECT domain E3 ubiquitin ligases transfer ubiquitin from E2 ubiquitin-conjugating enzymes to protein substrates, thus targeting specific proteins for lysosomal degradation. The encoded protein mediates the ubiquitination of multiple target substrates and plays a critical role in epithelial sodium transport by regulating the cell surface expression of the epithelial sodium channel, ENaC. Single nucleotide polymorphisms in this gene may be associated with essential hypertension. Alternatively spliced transcript variants encoding multiple isoforms have been observed for this gene. [provided by RefSeq, Mar 2012]