

## Product datasheet for **RG226579**

### **NONO (NM\_001145409) Human Tagged ORF Clone**

#### **Product data:**

Product Type:	Expression Plasmids
Product Name:	NONO (NM_001145409) Human Tagged ORF Clone
Tag:	TurboGFP
Symbol:	NONO
Synonyms:	MRXS34; NMT55; NRB54; P54; P54NRB; PPP1R114
Mammalian Cell Selection:	Neomycin
Vector:	pCMV6-AC-GFP (PS100010)
E. coli Selection:	Ampicillin (100 ug/mL)



[View online »](#)

**ORF Nucleotide Sequence:**

>RG226579 representing NM\_001145409  
 Red=Cloning site Blue=ORF Green=Tags(s)

TTTTGTAATACGACTCACTATAGGGCGGCCGGAATTCGTCGACTGGATCCGGTACCGAGGAGATCTGCC  
 GCC**CGATCGCC**

ATGCAGAGTAATAAACTTTTAACTTGGAGAAGCAAACCATACTCCAAGAAAGCATCATCAACATCACC  
 ACCAGCAGCAGCACCACCAGCAGCAACAGCAGCAGCCGCCACCACGCCAATACCTGCAAATGGGCAACA  
 GGCCAGCAGCAAAATGAAGGCTTGACTATTGACCTGAAGAATTTAGAAAACCAGGAGAGAAGACCTTC  
 ACCCAACGAAGCCGTCCTTTTGTGGAAATCTTCTCCCGACATCACTGAGGAAGAAATGAGGAACTAT  
 TTGAGAAATATGGAAGGCAGGCGAAGTCTTATTATAAGGATAAAGGATTTGGCTTTATCCGCTTGA  
 AACCCGAACCCTAGCGGAGATTGCCAAAGTGGAGCTGGACAATATGCCACTCCGTGGAAAGCAGCTGCGT  
 GTGCGCTTTGCCTGCCATAGTGCATCCCTTACAGTTCGAAACCTCCTCAGTATGTGTCCAACGAACTGC  
 TGAAGAAGCCTTTTCTGTGTTGGCCAGGTAGAGAGGGCTGTAGTCATTGTGGATGATCGAGGAAGGCC  
 CTCAGGAAAAGCATTGTTGAGTCTCAGGGAAGCCAGCTGCTCGAAAGCTCTGGACAGATGCAGTGAA  
 GGCCTCTCTGCTAACCACATTTCTCTGCTCTGTGACTGTGGAGCCATGGACCAGTTAGATGATGAAG  
 AGGGACTTCCAGAGAAGCTGGTTATAAAAAACCAGCAATTTACAAAGGAACGAGAGCAGCCACCCAGATT  
 TGCACAGCCTGGCTCCTTTGAGTATGAATATGCCATGCGCTGGAAGGCACTCATTGAGATGGAGAAGCAG  
 CAGCAGGACCAAGTGGACCGCAACATCAAGGAGGCTCGTGAAGCTGGAGATGGAGATGGAAGCTGCAC  
 GCCATGAGCACCAGGTCATGCTAATGAGACAGGATTTGATGAGGCGCAAGAAGAACTTCGGAGGATGGA  
 AGAGCTGCACAACCAAGAGGTGCAAAAACGAAAGCAACTGGAGCTCAGGCAGGAGGAAGAGCGCAGGCGC  
 CGTGAAGAAGAGATGCGGCGCAGCAAGAAGAAATGATGCGGCGACAGCAGGAAGGATTCAGGGAACTC  
 TCCCTGATGCGAGAGAGCAGGAGATTCGGATGGGTCAGATGGCTATGGGAGGTGCTATGGGCATAACAA  
 CAGAGGTGCCATGCCCCCTGCTCCTGTGCCAGCTGGTACCCAGCTCCTCAGGACCTGCCACTATGATG  
 CCGGATGGAACCTTTGGGATTGACCCACCAACAACTGAACGCTTTGGTCAGGCTGCTACAATGGAAGGAA  
 TTGGGGCAATTGGTGGAACCTCCTCTGCATTCAACCGTGCAGCTCCTGGAGCTGAATTTGCCCAACAA  
 ACGTCGCCGATAC

**ACGCGTACGCGGCCGCTCGAG** - GFP Tag - GTTTAA

**Protein Sequence:**

>RG226579 representing NM\_001145409  
 Red=Cloning site Green=Tags(s)

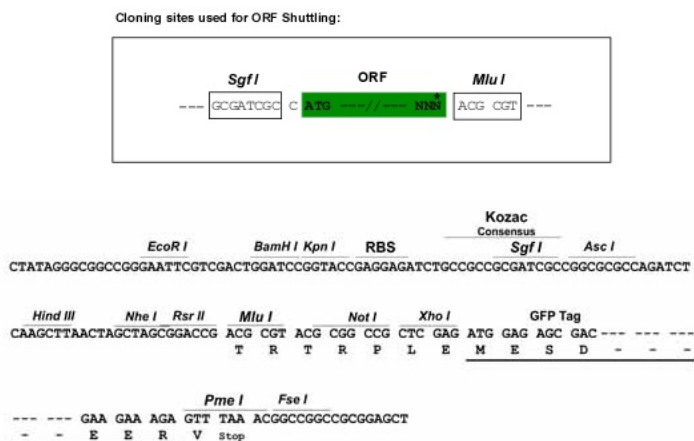
MQSNKTFNLEKQNHTPRKHQHQQHHQHHQQQQPPPPPIPANGQQASSQNEGLTIDLKNFRKPGKETF  
 TQRSRLFVGNLPPDITEEEMRKLFEKYGKAGEVFIHKDKGFGFIRLETRTLAEIAKVELDNMPLRGKQLR  
 VRFACHSASLTVRNLPQYVSNELLEAFSVFGQVERAVIVDDRGRPSGKGIVFSGKPAARKALDRCSE  
 GSFLLTTFPRPVTVEPMDQLDDEEGLPEKLVIKNQQFHKEREQPPRFAQPGSFEYAYMRWKAL IEMEQ  
 QQDQVDRNIKEAREKLEMEMEAARHEHQVLMRQDLMRRQEELRRMEELHNQEVQKRKQLELRQEEERRR  
 REEEMRRQEEEMRRQEGFGKTFPDAREQEI RMGQMAMGGAMGINNRGAMPAPVPAGTPAPPGPATMM  
 PDGTLGLTPPTTERFGQAATMEGIGAIGGTPPAFNRAAPGAEFAPNKRERY

**TRTRPLE** - GFP Tag - V

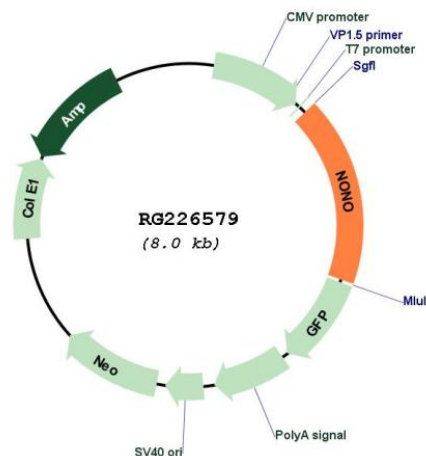
**Restriction Sites:**

Sgfl-Mlul

Cloning Scheme:



Plasmid Map:



ACCN: NM\_001145409

ORF Size: 1413 bp

OTI Disclaimer: The molecular sequence of this clone aligns with the gene accession number as a point of reference only. However, individual transcript sequences of the same gene can differ through naturally occurring variations (e.g. polymorphisms), each with its own valid existence. This clone is substantially in agreement with the reference, but a complete review of all prevailing variants is recommended prior to use. [More info](#)

OTI Annotation: This clone was engineered to express the complete ORF with an expression tag. Expression varies depending on the nature of the gene.

Components: The ORF clone is ion-exchange column purified and shipped in a 2D barcoded Matrix tube containing 10ug of transfection-ready, dried plasmid DNA (reconstitute with 100 ul of water).

<b>Reconstitution Method:</b>	<ol style="list-style-type: none"><li>1. Centrifuge at 5,000xg for 5min.</li><li>2. Carefully open the tube and add 100ul of sterile water to dissolve the DNA.</li><li>3. Close the tube and incubate for 10 minutes at room temperature.</li><li>4. Briefly vortex the tube and then do a quick spin (less than 5000xg) to concentrate the liquid at the bottom.</li><li>5. Store the suspended plasmid at -20°C. The DNA is stable for at least one year from date of shipping when stored at -20°C.</li></ol>
<b>RefSeq:</b>	<a href="#">NM_001145409.2</a>
<b>RefSeq Size:</b>	3057 bp
<b>RefSeq ORF:</b>	1416 bp
<b>Locus ID:</b>	4841
<b>UniProt ID:</b>	<a href="#">Q15233</a>
<b>Cytogenetics:</b>	Xq13.1
<b>Protein Families:</b>	Druggable Genome, Transcription Factors
<b>Gene Summary:</b>	This gene encodes an RNA-binding protein which plays various roles in the nucleus, including transcriptional regulation and RNA splicing. A rearrangement between this gene and the transcription factor E3 gene has been observed in papillary renal cell carcinoma. Alternatively spliced transcript variants have been described. Pseudogenes exist on Chromosomes 2 and 16. [provided by RefSeq, Feb 2009]