

Product datasheet for **RG226554**

SGK1 (NM_001143676) Human Tagged ORF Clone

Product data:

Product Type:	Expression Plasmids
Product Name:	SGK1 (NM_001143676) Human Tagged ORF Clone
Tag:	TurboGFP
Symbol:	SGK1
Synonyms:	SGK
Mammalian Cell Selection:	Neomycin
Vector:	pCMV6-AC-GFP (PS100010)
E. coli Selection:	Ampicillin (100 ug/mL)



[View online »](#)

ORF Nucleotide Sequence:

>RG226554 representing NM_001143676
 Red=Cloning site Blue=ORF Green=Tags(s)

TTTTGTAATACGACTCACTATAGGGCGGCCGGAATTCGTCGACTGGATCCGGTACCGAGGAGATCTGCC
 GCC**CGGATCGCC**

ATGGTAAACAAAGACATGAATGGATTCCCAGTCAAGAAATGCTCAGCCTTCCAATTTTTAAGAAGCGGG
 TACGAAGGTGGATCAAGAGCCCAATGGTCAGTGTGGACAAGCATCAGAGTCCCAGCTGAAGTACACCGG
 CTCCTCCATGGTGCACATCCCTCCAGGGAGCCAGACTTCGAGTCTTCTTGTGTCAAACATGCCTGGGT
 GAACATGCTTTCCAAAGAGGGTTCTCCCTCAGGAGAACGAGTCACTGTTTCATGGGAACTCAATCTGGGT
 GTGAAGTGAAGAGCCATGTAATCATGCCAACATCCTGACCAAGCCGATCCAAGAACCCTTCTGGACTAA
 TGATGATCCAGCTTTCATGAAGCAGAGGAGGATGGGTCTGAACGACTTTATTGAGAAGATTGCCAATAAC
 TCCTATGCATGCAAACACCCTGAAGTTCAGTCCATCTTGAAGATCTCCAACCTCAGGAGCCTGAGCTTA
 TGATGCCAACCTTCTCCTCCACCAAGTCTTCTCAGCAAATCAACCTTGGCCCGTCGTCGAATCTCTCA
 TGCTAAACCATCTGACTTTCACTTCTTGAAGTATCGGAAAGGGCAGTTTTGAAAGGTTCTTCTAGCA
 AGACACAAGGCAGAAGAAGTGTCTATGCAGTCAAAGTTTTACAGAAGAAAGCAATCCTGAAAAAGAAAG
 AGGAGAAGCATATTATGTCGGAGCGGAATGTTCTGTTGAAGAATGTAAGCACCTTTTCTGGTGGGCT
 TCCTTCTCTTCCAGACTGCTGACAAATTGACTTTGCTCCTAGACTACATTAATGGTGGAGAGTTGTTT
 TACCATCTCCAGAGGGAACGCTGCTTCTGGAACCACGGGCTCGTTTCTATGCTGCTGAAATAGCCAGTG
 CCTTGGGTACCTGCATTCACTGAACATCGTTTATAGAGACTTAAACCAGAGAATATTTGCTAGATTCC
 ACAGGGACACATTGTCTTACTGACTTCGGACTCTGCAAGGAGAACATTGAACACAACAGCACAAATCC
 ACCTTCTGTGGCAGCCGAGTATCTCGCACCTGAGGTGCTTATAAGCAGCCTTATGACAGGACTGTGG
 ACTGGTGGTCCCTGGGAGCTGTCTGTATGAGATGCTGTATGGCCTGCCGCTTTTTATAGCCGAAACAC
 AGCTGAAATGTACGACAACATTCTGAACAAGCCTCTCCAGCTGAAACCAATATTACAAATTCGCAAGA
 CACCTCCTGGAGGGCTCCTGCAGAAGGACAGGACAAAGCGGCTCGGGCCAAGGATGACTTCATGGAGA
 TTAAGAGTCATGTCTTCTCCTTAATTAAGTGGATGATCTCATTAAATAAGAAGATTACTCCCTTTT
 TAACCAAATGTGAGTGGGCCAACGACCTACGGCACTTTGACCCGAGTTTACCGAAGAGCCTGTCCCC
 AACTCCATTGGCAAGTCCCCTGACAGCGTCTCGTCACAGCCAGCGTCAAGGAAGCTGCCGAGGCTTTCC
 TAGGCTTTTCTATGCGCTCCACGGACTCTTCTCTC

ACGCGTACGCGGCCGCTCGAG - GFP Tag - GTTTAA

Protein Sequence:

>RG226554 representing NM_001143676
 Red=Cloning site Green=Tags(s)

MVNKDMNGFPVKKCSAFQFFKKRVRRIKSPMVSVDKHQSPSLKYTGSSMVHIPPGEPDFESSLCQTCLG
 EHAHQRGVLPQENESCSWETQSGCEVREPCNHANILTKPDPRTFWTNDPAFMKQRRMGLNDFIQKIANN
 SYACKHPEVQSILKISQPQPELMNANPSPPPSPSQINLGPSSNPHAKPSDFHFLKVIKGSFGKVLLA
 RHKAEEVFYAVKVLQKKAIIKKKKEEKHIMSERNVLLKNVKHPFLVGLHFSFQTADKLYFVLDYINGGELF
 YHLQRERCFLEPRARFYAAEIASALGYLHSLNIVYRDLKPENILLDSQGHIVLTDGLCKENIEHNSTTS
 TFCGTPPEYLAPEVLHKQPYDRYVDWWCLGAVLYEMLYGLPPFYSRNTAEMYDNILNKPLQLKPNITNSAR
 HLLLEGLLQKDRKRLGAKDDFMEIKSHVFFSLINWDDLINKKITPPFNPNVSGPNLRFHDFEFTTEPVP
 NSIGKSPDSVLVTASVKEAAEFLGFSYAPPTDSFL

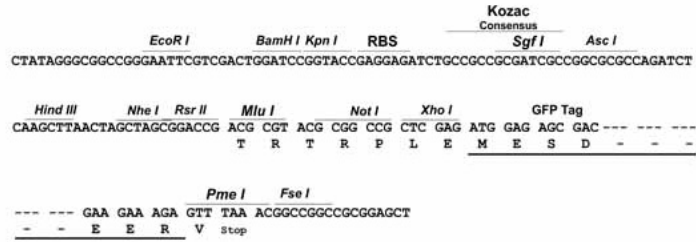
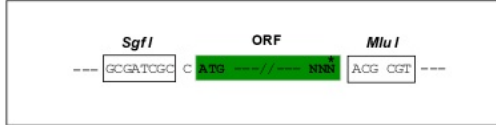
TRTRPLE - GFP Tag - V

Restriction Sites:

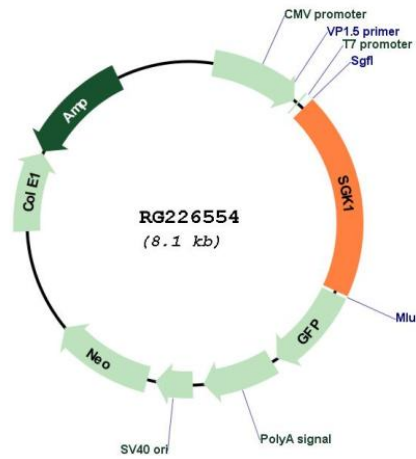
Sgfl-MluI

Cloning Scheme:

Cloning sites used for ORF Shutting:



Plasmid Map:



ACCN:	NM_001143676
ORF Size:	1578 bp
OTI Disclaimer:	The molecular sequence of this clone aligns with the gene accession number as a point of reference only. However, individual transcript sequences of the same gene can differ through naturally occurring variations (e.g. polymorphisms), each with its own valid existence. This clone is substantially in agreement with the reference, but a complete review of all prevailing variants is recommended prior to use. More info
OTI Annotation:	This clone was engineered to express the complete ORF with an expression tag. Expression varies depending on the nature of the gene.
Components:	The ORF clone is ion-exchange column purified and shipped in a 2D barcoded Matrix tube containing 10ug of transfection-ready, dried plasmid DNA (reconstitute with 100 ul of water).
Reconstitution Method:	<ol style="list-style-type: none">1. Centrifuge at 5,000xg for 5min.2. Carefully open the tube and add 100ul of sterile water to dissolve the DNA.3. Close the tube and incubate for 10 minutes at room temperature.4. Briefly vortex the tube and then do a quick spin (less than 5000xg) to concentrate the liquid at the bottom.5. Store the suspended plasmid at -20°C. The DNA is stable for at least one year from date of shipping when stored at -20°C.
RefSeq:	NM_001143676.1 , NP_001137148.1
RefSeq Size:	3208 bp
RefSeq ORF:	1581 bp
Locus ID:	6446
UniProt ID:	O00141
Cytogenetics:	6q23.2
Protein Families:	Druggable Genome, Protein Kinase
Gene Summary:	This gene encodes a serine/threonine protein kinase that plays an important role in cellular stress response. This kinase activates certain potassium, sodium, and chloride channels, suggesting an involvement in the regulation of processes such as cell survival, neuronal excitability, and renal sodium excretion. High levels of expression of this gene may contribute to conditions such as hypertension and diabetic nephropathy. Several alternatively spliced transcript variants encoding different isoforms have been noted for this gene. [provided by RefSeq, Jan 2009]