

Product datasheet for **RG226551**

GPR107 (NM_001136557) Human Tagged ORF Clone

Product data:

Product Type:	Expression Plasmids
Product Name:	GPR107 (NM_001136557) Human Tagged ORF Clone
Tag:	TurboGFP
Symbol:	GPR107
Synonyms:	bA138E2.2; GCDRP; LUSTR1
Mammalian Cell Selection:	Neomycin
Vector:	pCMV6-AC-GFP (PS100010)
E. coli Selection:	Ampicillin (100 ug/mL)



[View online »](#)

ORF Nucleotide Sequence:

>RG226551 representing NM_001136557
 Red=Cloning site Blue=ORF Green=Tags(s)

TTTTGTAATACGACTCACTATAGGGCGGCCGGAATTCGTCGACTGGATCCGGTACCGAGGAGATCTGCC
 GCC**CGGATCGCC**

ATGGCCGCTCTGGCGCCCGTCGGCTCCCCGCCTCCCGCGGTCTAGGCTGGCCGCGGCCCTCCGGCTGC
 TCCAATGCTGGGTTTGTCTGCAGTTGCTGGCCGAGCCTGGCCTGGGCCGGTCCATCACCTGGCACTCAA
 GGATGATGTGAGGCATAAAGTTCATCTGAACACCTTTGGCTTCTTCAAGGATGGGTACATGGTGGTGAAT
 GTCAGTAGCCTCTCACTGAATGAGCCTGAAGACAAGGATGTGACTATTGGATTTAGCCTAGACCGTACAA
 AGAATGATGGCTTTTCTTCTTACCTGGATGAAGATGTGAATTACTGTATTTAAAGAAACAGTCTGTCTC
 TGTACCCTTTTAAATCCTAGACATCTCCAGAAGTGAAGTAAGAGTAAAGTCTCCACCAGAAGCTGGTACC
 CAGTTACCAAAGATCATCTTCAGCAGGGATGAGAAAGTCTTGGTCAGAGCCAGGAGCCTAATGTTAAC
 CTGCTTCAGCAGGCAACCAGACCCAGAAGACACAAGATGGTGGAAAGTCTAAAAGAAGTACAGTGGATTC
 AAAGGCCATGGGAGAGAAATCCTTTTCTGTTTCAATAATGGTGGGCGAGTGCATTTTCAGTTTTTCTTT
 AACATCAGCACTGATGACCAAGAAGGCCTTTACAGTCTTTATTTTCATAAATGCCTTGGAAAAGAATTGC
 CAAGTGACAAGTTTACATTCAGCCTTGATATTGAGATCACAGAGAAGAATCCTGACAGCTACCTCTCAGC
 AGGAGAAATTCCTCTCCCAAATATACATCTCAATGGCCTTTTCTTCTTTCTTTCTGGGACCATCTGG
 ATTCATATCCTTCGAAAACGACGGAAATGATGTATTTAAATCCACTGGCTGATGGCGGCCCTTCTTTCA
 CCAAGTCTCTTCTTGGTGTCCATGCAATTGACTACCACTACATCTCCTCCAGGGCTTCCCTATCGA
 AGGCTGGGCTGTGTGTACTACATAACTCACCTTTTGAAGGGGCGCTACTTTCATCACCATTGCACTC
 ATTGGCACTGGCTGGGCTTTTATTAAGCACATCCTTTCTGATAAAGACAAAAAGATCTTCATGATTGTCA
 TTCCACTCCAGGCTGGCAAATGTAGCCTACATCATAGAGTCCACCGAGGAGGGCAGCAGTGAATA
 TGGCTTGTGGAAGGACTCTCTATTCTGCTCGACCTGTTGTGTTGTGGTGCATCCTCTTCCAGTGGTG
 TGGTCAATCAGACATTTACAAGAAGCATCAGCAACAGATGGAAAAGGTGACAGCATGGGACCTCTCAGC
 AGAGAGCGAATCTAAGAGCAGGAAGTCGCATAGAGTCTCACCATTTTGGCCAGGCTGATCTTGAACCTCT
 GGCCTCTAGCTGTCTCTGCCTCAGTCTCCAAAGGGCTGGGATTACAGCTGCTATTAACCTAGCAAAG
 CTGAAACTTTTTCAGACATTATTACGTCTTGATTGTGTGTACATATACTTCACTAGGATCATTGCATTTT
 TCCTCAAACCTCGTGTTCATTCCAGTGGAAAGTGGCTCTACCAGCTCCTGGATGAAACGGCCACACTGGT
 CTTCTTTGTTCTAACGGGTATAAATCCGTCCGGCTTACAGTAAACCCCTACCTACAACCTTCTCAGGAA
 GAAGAAGACTTGGAAATGGAGTCCGTTGTGACAACATCTGGGGTGTGGAAGTATGAAGAAAGTCAAGA
 AGGTGACCAACGGCTCCGTGGAGCCCCAGGGCGAGTGGGAAGGCGCCGTG

ACGCGTACGCGGCCGCTCGAG – GFP Tag – GTTTAA

Protein Sequence:

>RG226551 representing NM_001136557
 Red=Cloning site Green=Tags(s)

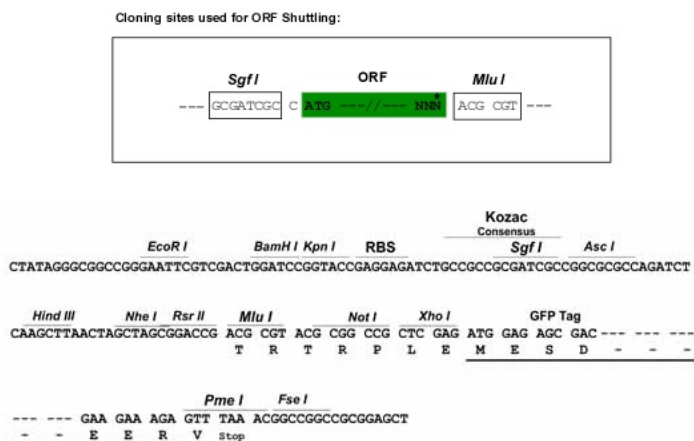
MAALAPVGPSPASRGPRLAAGLRLLPMLGLLQLLAEPGLGRVHHLALKDDVRHKVHLNTFGFFKDGVMVVN
 VSSLNLNRPEDKDVITIGFSLDRTKNDGFSYLDDEVNYCILKKQSVSVTLLILDISRSEVRVKSPPEAGT
 QLPKIIIFSRDEKVLGQSQEPNPNPASAGNQTQKTQDGGKSKRSTVDSKAMGEKFSVHNNGGAVSFQFFF
 NISTDDQEGLYSLYFHKCLGKELPSDKFTFSLDIEITEKNPDSYLSAGEIPLPKLYISMAFFFLSGTIW
 IHILRKRNRDVFVHILMAALPFTKSLSLVFHAIDYHYISSQGFPIEGWAVVVYIITHLLKGALLFITIAL
 IGTGWAFIKHILSDKDKKIFMIVIPLQVLANVAYIIIESTEETTEYGLWKDSLFLVDLLCCGAILFPVV
 WSIRHLQEASATDGKGDMSGPLQQRANLRAGSRIESHFAQADLELLASSCPPASVSQRAGITAAINLAK
 LKLFRRHYVLIYCYIYFTRIIAFLLKLAVPFQWKWLYQLLDETATLVFFVLTGYKFRPASDNPYLQLSQE
 EEDLEMESVVTTSVGMESMKVKVKTNGSVPEPQGEWEGAV

TRTRPLE – GFP Tag – V

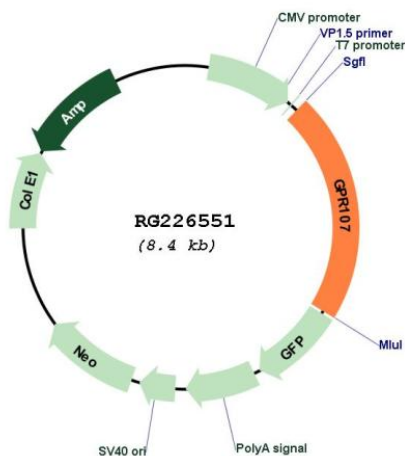
Restriction Sites:

Sgfl-MluI

Cloning Scheme:



Plasmid Map:



ACCN: NM_001136557

ORF Size: 1800 bp

OTI Disclaimer:	<p>Due to the inherent nature of this plasmid, standard methods to replicate additional amounts of DNA in E. coli are highly likely to result in mutations and/or rearrangements. Therefore, OriGene does not guarantee the capability to replicate this plasmid DNA. Additional amounts of DNA can be purchased from OriGene with batch-specific, full-sequence verification at a reduced cost. Please contact our customer care team at custsupport@origene.com or by calling 301.340.3188 option 3 for pricing and delivery.</p> <p>The molecular sequence of this clone aligns with the gene accession number as a point of reference only. However, individual transcript sequences of the same gene can differ through naturally occurring variations (e.g. polymorphisms), each with its own valid existence. This clone is substantially in agreement with the reference, but a complete review of all prevailing variants is recommended prior to use. More info</p>
OTI Annotation:	<p>This clone was engineered to express the complete ORF with an expression tag. Expression varies depending on the nature of the gene.</p>
Components:	<p>The ORF clone is ion-exchange column purified and shipped in a 2D barcoded Matrix tube containing 10ug of transfection-ready, dried plasmid DNA (reconstitute with 100 ul of water).</p>
Reconstitution Method:	<ol style="list-style-type: none">1. Centrifuge at 5,000xg for 5min.2. Carefully open the tube and add 100ul of sterile water to dissolve the DNA.3. Close the tube and incubate for 10 minutes at room temperature.4. Briefly vortex the tube and then do a quick spin (less than 5000xg) to concentrate the liquid at the bottom.5. Store the suspended plasmid at -20°C. The DNA is stable for at least one year from date of shipping when stored at -20°C.
RefSeq:	NM_001136557.2
RefSeq Size:	7096 bp
RefSeq ORF:	1803 bp
Locus ID:	57720
UniProt ID:	Q5VW38
Cytogenetics:	9q34.11
Protein Families:	Druggable Genome, Transmembrane
Gene Summary:	<p>Has been proposed to act as a receptor for neuronostatin, a peptide derived from the somatostatin/SST precursor (PubMed:22933024). Involved in blood sugar regulation through the induction of glucagon in response to low glucose (By similarity).[UniProtKB/Swiss-Prot Function]</p>