

## Product datasheet for **RG226528**

### EIF5A (NM\_001143760) Human Tagged ORF Clone

#### Product data:

**Product Type:** Expression Plasmids  
**Product Name:** EIF5A (NM\_001143760) Human Tagged ORF Clone  
**Tag:** TurboGFP  
**Symbol:** EIF5A  
**Synonyms:** eIF-4D; EIF-5A; EIF5A1; eIF5AI  
**Mammalian Cell Selection:** Neomycin  
**Vector:** pCMV6-AC-GFP (PS100010)  
**E. coli Selection:** Ampicillin (100 ug/mL)  
**ORF Nucleotide Sequence:** >RG226528 representing NM\_001143760  
 Red=Cloning site Blue=ORF Green=Tags(s)

TTTTGTAATACGACTCACTATAGGGCGGCCGGAATTCGTCGACTGGATCCGGTACCGAGGAGATCTGCC  
 GCC**CGATCGCC**

ATGTGTGGAAGCTGGGGGACTGATTCCAAGACAAGGCGCCACCCACAGAGCAAGTTTTCTGAAACGTT  
 TGGAAATCGAAGCCTCTTAAAATGGCAGATGACTTGGACTTCGAGACAGGAGATGCAGGGGCTCAGCCAC  
 CTTCCCAATGCAGTGCTCAGCATTACGTAAGAATGGCTTGTGGTGTCTCAAAGGCCGCCATGTAAGATC  
 GTCGAGATGTCTACTTCCAAGACTGGCAAGCACGGCCACGCCAAGGTCCATCTGGTTGGTATTGACATCT  
 TACTGGGAAGAAATATGAAGATATCTGCCGTCACCTCATAATATGGATGTCCCAACATCAAAGGAA  
 TGACTTCCAGCTGATTGGCATCCAGGATGGGTACCTATCACTGCTCCAGGACAGCGGGGAGGTACGAGAG  
 GACCTTCGTCTCCCTGAGGGAGACCTTGCAAGGAGATTGAGCAGAAAGTACGACTGTGGAGAAGAGATCC  
 TGATCACGGTGTCTGCCATGACAGAGGAGGAGCTGTTGCAATCAAGGCCATGGCAAAA

**ACGCGT**ACGCGGCCGCTCGAG - GFP Tag - GTTTAA

**Protein Sequence:** >RG226528 representing NM\_001143760  
 Red=Cloning site Green=Tags(s)

MCGTGGTDSKTRRPPHRASFLKRLESKPLKMADDLDFETGDAGASATFPMQCSALRKNFVVLKGRPCKI  
 VEMSTSKTGKHGKHLVGLIDIFTGKKYEDICPSTHNMVDPNIKRNDQFLIGIQDGYLSLLQDSGEVRE  
 DLRLPEGDLGKEIEQKYDCGEEILITVLSAMTEEAIVKAMAK

**TRTRPLE** - GFP Tag - V

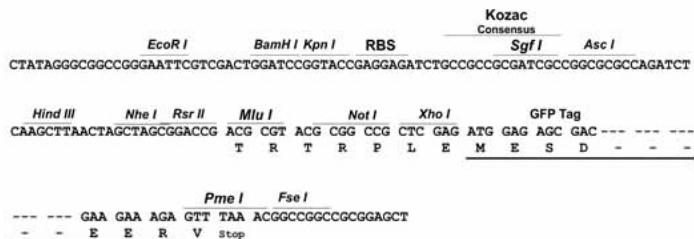
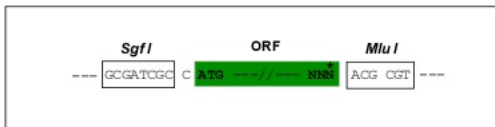
**Restriction Sites:** SgfI-MluI



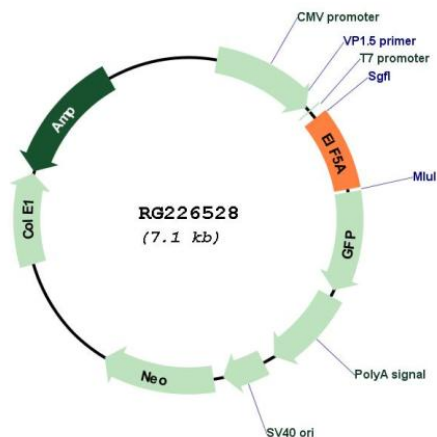
[View online »](#)

Cloning Scheme:

Cloning sites used for ORF Shutting:



Plasmid Map:



ACCN: NM\_001143760

ORF Size: 552 bp

<b>OTI Disclaimer:</b>	<p>Due to the inherent nature of this plasmid, standard methods to replicate additional amounts of DNA in E. coli are highly likely to result in mutations and/or rearrangements. Therefore, OriGene does not guarantee the capability to replicate this plasmid DNA. Additional amounts of DNA can be purchased from OriGene with batch-specific, full-sequence verification at a reduced cost. Please contact our customer care team at <a href="mailto:custsupport@origene.com">custsupport@origene.com</a> or by calling 301.340.3188 option 3 for pricing and delivery.</p> <p>The molecular sequence of this clone aligns with the gene accession number as a point of reference only. However, individual transcript sequences of the same gene can differ through naturally occurring variations (e.g. polymorphisms), each with its own valid existence. This clone is substantially in agreement with the reference, but a complete review of all prevailing variants is recommended prior to use. <a href="#">More info</a></p>
<b>OTI Annotation:</b>	This clone was engineered to express the complete ORF with an expression tag. Expression varies depending on the nature of the gene.
<b>Components:</b>	The ORF clone is ion-exchange column purified and shipped in a 2D barcoded Matrix tube containing 10ug of transfection-ready, dried plasmid DNA (reconstitute with 100 ul of water).
<b>Reconstitution Method:</b>	<ol style="list-style-type: none"> <li>1. Centrifuge at 5,000xg for 5min.</li> <li>2. Carefully open the tube and add 100ul of sterile water to dissolve the DNA.</li> <li>3. Close the tube and incubate for 10 minutes at room temperature.</li> <li>4. Briefly vortex the tube and then do a quick spin (less than 5000xg) to concentrate the liquid at the bottom.</li> <li>5. Store the suspended plasmid at -20°C. The DNA is stable for at least one year from date of shipping when stored at -20°C.</li> </ol>
<b>RefSeq:</b>	<a href="#">NM_001143760.1</a> , <a href="#">NP_001137232.1</a>
<b>RefSeq Size:</b>	1256 bp
<b>RefSeq ORF:</b>	555 bp
<b>Locus ID:</b>	1984
<b>UniProt ID:</b>	<a href="#">P63241</a>
<b>Cytogenetics:</b>	17p13.1

**Gene Summary:**

mRNA-binding protein involved in translation elongation. Has an important function at the level of mRNA turnover, probably acting downstream of decapping. Involved in actin dynamics and cell cycle progression, mRNA decay and probably in a pathway involved in stress response and maintenance of cell wall integrity. With syntenin SDCBP, functions as a regulator of p53/TP53 and p53/TP53-dependent apoptosis. Regulates also TNF-alpha-mediated apoptosis. Mediates effects of polyamines on neuronal process extension and survival. May play an important role in brain development and function, and in skeletal muscle stem cell differentiation. Also described as a cellular cofactor of human T-cell leukemia virus type I (HTLV-1) Rex protein and of human immunodeficiency virus type 1 (HIV-1) Rev protein, essential for mRNA export of retroviral transcripts.[UniProtKB/Swiss-Prot Function]