

Product datasheet for **RG226527**

ABH2 (ALKBH2) (NM_001145375) Human Tagged ORF Clone

Product data:

Product Type: Expression Plasmids
Product Name: ABH2 (ALKBH2) (NM_001145375) Human Tagged ORF Clone
Tag: TurboGFP
Symbol: ALKBH2
Synonyms: ABH2
Mammalian Cell Selection: Neomycin
Vector: pCMV6-AC-GFP (PS100010)
E. coli Selection: Ampicillin (100 ug/mL)
ORF Nucleotide Sequence: >RG226527 representing NM_001145375
Red=Cloning site Blue=ORF Green=Tags(s)

TTTTGTAATACGACTCACTATAGGGCGGCCGGAATTCGTCGACTGGATCCGGTACCGAGGAGATCTGCC
GCC**CGATCGCC**

ATGGACAGATTCCTGGTCAAAGGGGCTCAAGGGGCCTTTTGGGAAGCAGGAGGAGCAAGAGCCAACTG
GAGAAGAGCCAGCTGTGTTGGGAGGAGACAAAGAAAGCACAAGGAAGAGGCCAGGAGAGAGGCCCCAGG
GAATGGAGGCCACTCAGCAGGCCCTAGCTGGCGGCACATTCGGGCTGAGGGCCTGGACTGCAGTTACACA
GTCCTGTTTGGCAAAGCTGAGGCAGATGAGATTTTCCAAGAGTTGGAGAAAGAAGTAGAATATTTTACAG
GAGCACTGGCCAGAGTCCAGGTATTCGGGAAGTGGCACAGTGTGCCAGGAAGCAGGCAACGTATGGCGA
CGCTGGGCTGACCTACACATTTTCAGGCCTCACGCTGTCTCCAAAGCCCTGGATCCCAGTTCTAGAGCGC
ATCCGGGATCACGTCTCTGGGGTACTGGACAGACCTTCAACTTTGTGCTCATCAACAGGTATAAAGATG
GCTGTGACCACATCGGGGAGCACCGAGATGATGAAAGAGAACTGGCCCTGGGAGCCCCATTGCCTCTGT
CTCCTTCGGTGCCTGCAGAGACTTTGTCTTCCGGCATAAGGATCCCCTGGGAAAAGCCCCCTCAGGAGG
GTGGCGGTGGTCAAGCTGCCGCTGGCCACGGGAGCTTACTAATGATGAACCACCCGACCAACACGCACT
GGTACCACAGTCTCCCGTGAGAAAGAAGTCTGGCTCCACGGTGAATCTGACTTTTCGTAATAATTTT
GCTTACTAAAAA

ACGCGTACGCGGCCGCTCGAG - GFP Tag - GTTTAA



[View online »](#)

Protein Sequence: >RG226527 representing NM_001145375
Red=Cloning site Green=Tags(s)

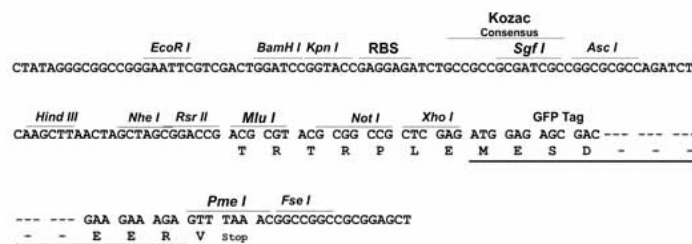
MDRFLVKGAQGGLLRKQEEQEPTGEEPVLGGDKESTRKRPRREAPGNGGHSAGPSWRHIRAEGLDCSYT
 VLFGKAEADIEIFQELEKEVEYFTGALARVQVFGKWHSPVRKQATYGDAGLTYTTFGLTLSPKPWIPVLER
 IRDHVSGVTGQTFNFVLINRYKDGCDHIGEHRDDERELAPGSPIASVSFGACRDFVFRHKDSRGKSPSRR
 VAVVRLPLAHGSLMMNHPTNTHWYHSLPVRKKVLAPRVNLTFRKILLTKK

TRTRPLE - GFP Tag - V

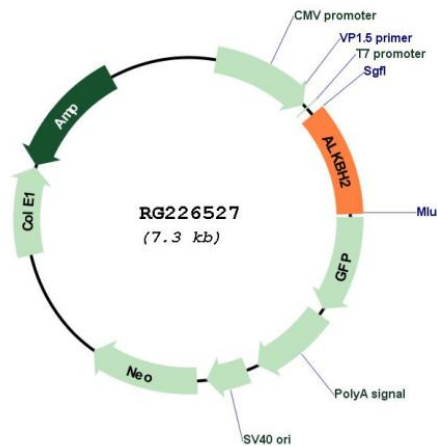
Restriction Sites: SgfI-MluI

Cloning Scheme:

Cloning sites used for ORF Shutting:



Plasmid Map:



ACCN: NM_001145375

ORF Size: 783 bp

OTI Disclaimer:	The molecular sequence of this clone aligns with the gene accession number as a point of reference only. However, individual transcript sequences of the same gene can differ through naturally occurring variations (e.g. polymorphisms), each with its own valid existence. This clone is substantially in agreement with the reference, but a complete review of all prevailing variants is recommended prior to use. More info
OTI Annotation:	This clone was engineered to express the complete ORF with an expression tag. Expression varies depending on the nature of the gene.
Components:	The ORF clone is ion-exchange column purified and shipped in a 2D barcoded Matrix tube containing 10ug of transfection-ready, dried plasmid DNA (reconstitute with 100 ul of water).
Reconstitution Method:	<ol style="list-style-type: none">1. Centrifuge at 5,000xg for 5min.2. Carefully open the tube and add 100ul of sterile water to dissolve the DNA.3. Close the tube and incubate for 10 minutes at room temperature.4. Briefly vortex the tube and then do a quick spin (less than 5000xg) to concentrate the liquid at the bottom.5. Store the suspended plasmid at -20°C. The DNA is stable for at least one year from date of shipping when stored at -20°C.
RefSeq:	NM_001145375.1 , NP_001138847.1
RefSeq Size:	953 bp
RefSeq ORF:	786 bp
Locus ID:	121642
UniProt ID:	Q6NS38
Cytogenetics:	12q24.11
Protein Families:	Druggable Genome
Gene Summary:	The Escherichia coli AlkB protein protects against the cytotoxicity of methylating agents by repair of the specific DNA lesions generated in single-stranded DNA. ALKBH2 and ALKBH3 (MIM 610603) are E. coli AlkB homologs that catalyze the removal of 1-methyladenine and 3-methylcytosine (Duncan et al., 2002 [PubMed 12486230]).[supplied by OMIM, Mar 2008]