

Product datasheet for **RG226513**

PCDH15 (NM_001142763) Human Tagged ORF Clone

Product data:

Product Type:	Expression Plasmids
Product Name:	PCDH15 (NM_001142763) Human Tagged ORF Clone
Tag:	TurboGFP
Symbol:	PCDH15
Synonyms:	CDHR15; DFNB23; USH1F
Mammalian Cell Selection:	Neomycin
Vector:	pCMV6-AC-GFP (PS100010)
E. coli Selection:	Ampicillin (100 ug/mL)
ORF Nucleotide Sequence:	>RG226513 representing NM_001142763 Red=Cloning site Blue=ORF Green=Tags(s)

TTTTGTAATACGACTCACTATAGGGCGGCCGGAATTCGTCGACTGGATCCGGTACCGAGGAGATCTGCC
GCC**CGATCGCC**

ATGTTTCGACAGTTTTATCTCTGGACATGTTTAGCTTCAGGGATCATCCTGGGCTCTCTTTGAAATCT
GCTTGGGCCAGTATGATGATGACTGGCAATATGAGGATTGCAAAGTAGCTAGGGGAGGACCACCAGCTAC
CATAGTTGCTATTGATGAAGAAAGTCGGAATGGTACAATTCTGGTGGACAACATGCTGATCAAAGGGACT
GCTGGAGGACCAGACCCACCATAGAATTTCTTTAAAGGATAATGTGGATTACTGGGTGTTGATGGATC
CTGTTAAGCAAATGCTTTTCTGAACAGCACCGGAAGAGTTCTGGATAGAGATCCACCGATGAACATACA
CTCCATTGTGGTGCAGGTCCAGTGCATCAACAAAAAGTGGGCACTATTATCTACCATGAAGTGCGAATA
GTGGTGAGAGACAGGAATGACAACCTCACCCACTTTCAAGCATGAAAGCTACTATGCCACAGTGAATGAGC
TCACTCCAGTTGGTACCACAATATTCACAGGATTTTCAGGAGACAATGGAGCTACAGATATAGATGATGG
ACCAAAATGGACAGATAGAGTATGTTATTCAGTATAATCCAGATGATCCGACATCCAATGACACCTTTGAA
ATCCCTTAATGTTGACTGGAAATATAGTGTTAAGGAAGAGGCTCAACTATGAAGATAAGACTCGCTACT
TTGTCAATAATCCAAGCTAATGACCGTGCCAAAATCTGAATGAGAGGCGAACCACCACCACCTCTCAC
AGTGGATGTTCTGGATGGAGATGACTTGGGTCCAATGTTTCTTCTTGTCTCTGTGCCAAACACTCGT
GATTGCCGTCCACTCACTTATCAAGCTGCCATACCTGAGTTGAGAAGTCCGGAAGAAGTGAACCCCATTA
TTGTTACGCCACCAATCCAAGCCATTGATCAGGACCGGAATATCAACCGCCATCAGATAGGCCAGGAAT
CCTCTATTCCATCCTTGTGGGACTCCTGAGGATTACCCACGATTTTCCATATGCATCCTAGGACAGCA
GAACTTAGTCTCCTGGAGCCAGTAAACAGAGACTTTACCAGAAAATTTGATTTGGTTATTAAGGCTGAAC
AAGACAATGGTCATCCTCTTCTGCCTTTGCCGGTCTACACATTGAAATACTGGATGAAAACAATCAAAG
TCCATATTTTACAATGCCAGTTATCAAGGCTATATCCTGGAATCTGCCAGTGGGAGCAACCATTTTCG
GACAGTCTCAATTTGACTTCACCTTTAAGAATAGTAGCTCTGGACAAGGACATAGAAGATACAAAAGACC
CAGAGCTTCACTTTTCTGAATGACTACACCTCAGTCTTACCCTCACACAGACTGGTATTACTCGCTA
CCTCACCTTACTCAACAGTGGACAGGAAGAAGACAGCAAACCTTACACCTTTTCGATAACAGCATTGAT



[View online »](#)

GGTGTACAAGAAAGTGAGCCAGTCATCGTCAATATTCAAGTGATGGATGCAAATGATAACACGCCAACCT
 TCCTGAAATATCCTATGATGTGTATGTTTATACAGACATGAGACCTGGGGACAGTGTACATACAGCTCAC
 TGCAGTCGACGCAGACGAAGGGTCAAAATGGGGAGATCACATATGAAATCCTTGTTGGGGCTCAGGGAGAC
 TTCATCATCAATAAAAACAACAGGGCTTATCACCATCGTCCAGGGGTGAAAATGATAGTCGGGCGGACTT
 ACGCACTACGGTCCAAGCAGCGGATAATGCTCCTCCTGCAGAGCGAAGGAACTCCATCTGCACTGTGTA
 TATTGAAGTGCTCCACCAATAATCAAAGCCCTCCTCGCTTCCCACAGCTGATGATAGCCTTGAATTT
 AGTGAAGCCATGAGGGTTGGTGTGTTTTATTAATCTACAGGCAACTGATCGAGAGGGAGACTCAATAA
 CATATGCCATTGAGAATGGAGATCCTCAGAGAGTTTTTAATCTTTCAGAAACCACGGGGATTCTAACCTT
 AGGGAAAGCACTGGACAGGGAAAGCACTGATCGTACATTCTGATCATCACAGCTTCAGATGGCAGGCCA
 GATGGGACCTCAACTGCCACAGTAAACATAGTGGTGACAGATGTCAATGACAATGCTCCAGTGTTTGATC
 CTTATCTGCCAAGAAATTTATCTGTGGTGAAGAAGAAGCCAATGCCTTTGTGGGTCAAGTAAAAGCAAC
 AGACCCTGATGCTGGAATAAATGGTCAAGTGCCTACAGTTTGGGTAACTTAATAATCTTTTTCGTATC
 ACATCCAATGGGAGCATTACACAGCAGTGAAGCTTAAACAGAGAAGTCAGGGACTACTATGAACTGTTG
 TTGTGGCAACAGATGGAGCAGTACACCCTCGTCATTCAACTCTAACCTTGGCCATCAAGTTTTGGACAT
 TGATGATAACAGTCTGTGTTCCCAATCAACATACACTGTCTTGTGAAGAGAAATTTGCCAGCTGGG
 ACTACCATCCTTCAAATAGAGGCCAAAGATGTCGACCTTGGAGCAAAATGTGTCTTACCGGATAAGAAGCC
 CAGAAGTGAAGCACTTTTTTGCCTACATCCATTTACAGGAGAATATCGCTTTAAGGAGTTTAGATTA
 TGAGGCATTTCCAGACCAAGAAGCAAGTATCACTTTTCTGGTAGAGGCCCTTGTATTTATGGAACAATG
 CCACCTGGTATTGCTACTGTACAGTGATTGTAAGGATATGAATGATTATCCTCCTGTCTTTAGTAAAC
 GAATATACAAAGGGATGGTGGCTCCGGATGCAGTCAAGGGTACACCTATCACAACAGTTTATGCTGAAGA
 TGCAGACCCTCCTGGATTACCTGCAAGTCGTGTGAGGTATAGAGTAGATGTACAGTTTCTTACCCT
 GCCAGTATTTTTGAAGTGAAGAAGATTCTGGAAGAGTAATAACACGAGTCAATCTAATGAAGAACCTA
 CAACAATTTTTAAGTTGGTGGTGGTGTGTTTTGATGATGGGAGCCTGTGATGCCAGTCCACAGT
 GAAGATTCTGTCTTACATCCTGGTGGATCCACGCTTACACAGGAGGAATATAGACCTCCTCCAGTA
 AGTGAAGTGGCCACAAAGGGACCATGGTGGTGAATTTCTGCTGCTGCCATTAAATCAAAGTATTGTGT
 ACTCCATTGTTTCAGGAAATGAAGAAGATACATTTGGAATTAATAACATCACAGGTGTTATCTATGTGAA
 TGGACCTCTGGATTATGAGACCAGGACAAGCTATGTACTCGAGTCCAAGCTGATTCCTGGAAAGTGGTC
 CTTGCCAATCTCCGAGTTCCTTCAAAAAGCAATACAGCTAAAGTATACATTGAGATTGAGGATGAAAATA
 ATCATCCCCAGTGTTCAGAAAAAATTTACATCGGAGGTGATCTGAAGATGCAAGAATGTTTACTTCT
 TGTACTCAGAGTGAAGGCTACTGATAAAGATACTGGCAATATAGTGTGATGGCTACAGACTCATAATA
 CCACCAATTAAGAGGGAAAAGAAGGATTTGTAGTGGAACATATACAGGGCTTATCAAACTGCTATGC
 TCTTCCATAATATGAGGAGATCCTACTTCAAGTTTCAAGTATTGCAACTGACGACTATGGGAAGGGACT
 GAGCGGCAAGGCCGATGTACTCGTCTCCGTGGTCAATCAGCTGGATATGCAAGTCATTGTTTCCAATGTG
 CCTCCTACTCTAGTGGAAAAAAGATAGAAGATCTTACAGAGATCTTGGATCGCTATGTTTCAGGAACAAA
 TTCTGGTGGCAAGGTCGTAGTGGAGTCCATTGGAGCTCGCCGGCATGGAGATGCCTTTTCCCTAGAAGA
 TTACACCAAAATGTGACTGTACTGTCTATGCAATGACCCCAACCAACAGGCCATCGATAGAAATGAG
 CTTTTTAAATTTTTGGATGGCAACTACTTGATATCAATAAAGACTTTTACGCCGATTATGGGGAAGGAG
 GACGCATTCTGGAGATCCGGACTCCAGAGGCAGTGACCAGCATTAAAAAGAGAGGAGAAAAGTCTAGGATA
 CACAGAAGGGCCCTTGTGGCTCTGGCCTCATCATCCTCTGCTGCATTCTGCCATCTTGGTGGTT
 TTGGTCAGCTACAGACAGTTTTAAAGTACGTCAAGCTGAGTGTACAAAGACTGCACGAATTCAGCCGCAT
 TACCCGCGGCTAAACCAGCAGTCCGGCTCCTGCACCAGTGGCAGCGCCCCGCCGCCGCCGCTCC
 GCCAGGTGCGCATCTCTATGAAGAACTTGAGACAGCTCAATGCATAATCTTTTCTTCTTACCATTTT
 CAACAAAGCAGGGGAAATAACTCAGTCTCAGAAGACAGGAAACATCAACAAGTTGTGATGCCTTTTTCTT
 CCAATACTATTGAGGCTCACAAGTCAGCTCATGTAGACGGATCACTTAAGAGCAACAACTGAAGTCTGC
 AAGAAAATTCACATTTCTATCTGATGAGGATGACTTAAGTGCCCATATCCCTTTATAAGGAAAACATA
 AGTCAAGTATCAACAAATTCAGACATTTACAGAGAACAGATTTTGTAGACCCATTTTACCCAAAATAC
 AAGCCAAGAGTAAGTCTCTGAGGGGCCAAGAGAAAAGATTCAGAGGCTGTGGAGTCAGTCAGTCAGCTT
 ACCCAGGAGGCTGATGAGGAAAGTTCCAAATAGACCAGAGATCATAGATCTGCAGCAGTGCAAGGCACC
 AGGCAGAAAGCTGAAAATGAAAACACTGGAATCTGTACAAAACAAAAGAGGTAGCAGCAATCCATTGCTTA
 CAACTGAAGAGGCAAAATTTGACAGAGAAAAGAGGAAATAAGGCAAGGTGAAACACTGATGATAGAAGGAA
 AGAACAGTTGAAATCTCTCTCTTCCAGACTCTTCAATTTTGTCTTCCAGGCCTCACTTCTCATTCTCCACT
 TTGCCAACTGTTCAAGAACTGTGGAACCAATCAGAACCTAATGTCATCAGTTCTCCTGCTGAGTGT

CCTTGGAACTTTCTCCTCAAGGCCTTGTGTTTTACATTCTTCACTCTCTAGGAGAGAGACACCTATTTG
TATGTTACCTATTGAAACCGAAAGAAATATTTTTGAAAATTTGCCCATCCACCAAAACATCTCTCCTTCT
GCCTGTCCCTTCCCCTCCTCCTCCTATTTCTCCTCCTCTCCTCCTGCTCCTGCTCCTCTTGCTC
CTCCTCCTGACATTTCTCCTTTTTCTTTTTGTCTCCTCCTCCTCCTCCTCTATCCCTCTTCTCT
TCCTCCTACATTTTTCCACTTCCGTTTCAACGTCTGGTCCCCAACACCACCTCTTCTACCTCCA
TTTCCAACCTCTTCTCCACCACCTCTTCTATTCTTGCCTCCACCTCCTTCAGCTCATTTCGTG
CCACAGAGTGTCTGTATAACAGGTGTTAAATGCACGACCAACTTGATGCCTGCCGAGAAAAATTAAGTC
CTCTATGACACAGCTATCAACAACGACAGTGTGTAACACAGACCCTCAGAGAGAACCAAAAGGCATCCTC
AGACACGTTAAAACTTAGCAGAACTTAAAAATCAGTAGCTAACATGTACAGTCAAATAGAAAAAACT
ATCTACGCACAAAATGTTTCAGAACTTCAAACATGTGCCCTTTCAGAAAGTAAACAAATAGGAAATCACATC
TGAACAAAACAAGGGGAGTTTGAACAATATTGTCGAGGGAACGAAAAACAATCTCACAGTCAATCTACT
TCACTG

ACGCGTACGCGGCCGCTCGAG - GFP Tag - GTTTAA

Protein Sequence:

>RG226513 representing NM_001142763
Red=Cloning site Green=Tags(s)

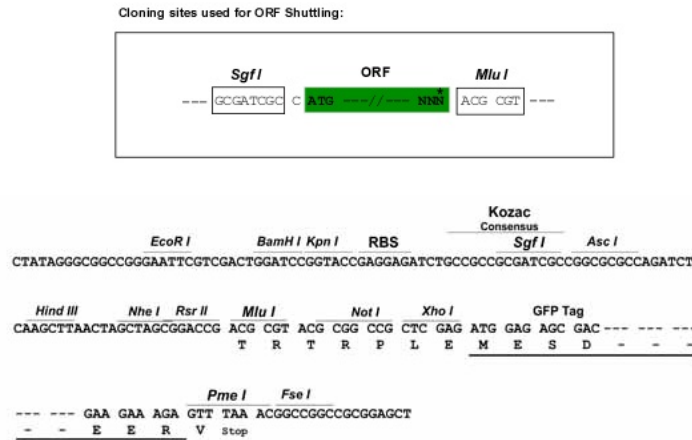
MFRQFYLWTCLASGIILGSLFEICLGQYDDDWQYEDCKLARGPPATIVAIDEESRNGTILVDNMLIKGT
AGGPDPTIELSLKDNVDYVWLMDPVKQMLFLNSTGRVLRDPPMNIHSIVVQVQCINKKVGTTIYHEVRI
VVRDRNDNSPTFKHESYATVNELTPVGTITFTGFSGDNGATDIDDGPNQIEYVIQYNPDPTSNDTFE
IPLMLTGNIVLRKRLNYEDKTRYFVIIQANDRAQNLNERRTTTTLTVDLVLDGDDLGPMLPCVLVPNTR
DCRPLTYQAAIPELRTPEELNPIIVTPIQAIQDRNIQPPSDRPGILYSILVGTPEDYPRFFHMHPRTA
ELSLLEPVNRDFHQFDLVIKAEQDNGHPLPAFAGLHIEILDENNQSPYFTMPSYQGYILESAPVGATIS
DSLNLTSPLRIVALDKDIEDTKDPELHLFLNDYTSVFTVTQTGITRYLTLLQPVDREEQTYTFSITAFD
GVQESEPIVNIQVMDANDNTPTFPEISYDVVYVYDMRPGDSVIQLTAVDADEGSNGEITYEILVGAQGD
FIINKTTLGITIAPGVEMIVGRYALTVQAADNAPPAERRNSICTVYIEVLPNNQSPRFPQMLMYSLI
SEAMRVGAVLLNLQATDREGDSITYAIENGDPQRFVNLSETTGILTLGKALDRESTDRYILIIITASDGRP
DGTSTATVNIIVTDVNDNAPVFDPYLPRNL SVVEEENAFVGVKATDPDAGINGQVHYSLGNFNLFRI
TNSGSIYTAVKLNREVRDYYELVVVATDGAHVPRHSTLTLAIKVLIDDNSPVFTNSTYTVLVEENLPAG
TTILQIEAKDVDLGANVSYRIRSPEVKHFFALHPFTGELSLRSLDYEAFPDQEASITFLVEAFDIYGTM
PPGIATVTVIVKDMNDYPPVFSKRIYKGMVAPDAVKGTPITTVYAEDADPPGLPASRVRYRVDVQFPYP
ASIFEVEEDSGRIVTRVNLNEEPTTIFKLVVAVFDDGEPVMSSSATVKILVLHPGEIPRFTQEEYRPPPV
SELATKGMTMGVISAANQSIYVSIYSGNEEDTFGINNITGVIYVNGPLDYETRTSYVLRVQADSLEVV
LANLRVPSKSNKAVYIEIQDENNHPPVFQKFKYIGGVSEDARMFTSVLRVKATDKDTGNYSVMAYRLII
PPIKEGKEGFVETYTGLIKTAML FHNMRRSYFKFQVIATDDYGKGLSGKADVLVSVVNQLDMQVIVSNV
PPTLVEKKIEDL TEILDYVQEQIPGAKVVVESIGARRHGDAFSLDYTKCDLTVYAIQDPTNRAIDRNE
LFKFLDGKLLDINKDFQPYGEGGRILEIRTPEAVTSIKKRGESLGYTEGALLALAFIIILCCIPAILVV
LVSYRQFKVRQAECTKTARIQAALPAKPAVPAPVAAAPPPPPPPGHLYEELGDSSMHNLFLLYHF
QQSRGNNSVSEDRKHQQVMPFSSNTIEAHKSAHVDGSLKSNKLSARKFTFLSDEDDL SAHNPLYKENI
SQVSTNSDISQRTDFVDPFSPKIQAQKSLRGPREKIQRLWSQVSLPRRLMRKVPNRPEIDLQQWQGT
RQKAENENTGICTNKRGSNPLLTTEEANL TEKEEIRQGETLMIEGTEQLKLSLSSDSSFCFPRPHFSFST
LPTVSRVELKSEPNVISSPAECSLELSPSRPCVLHSSL SRRETPICMPLIETERNIFENFAHPPNISPS
ACPLPPPPPI SPPSPPPAPLAPPDIPFSLFCPPPSPPSIPLPLPPPTFFPLSVSTSGPPTPPLLP
FPTLPPPPPSIPCPPPSASFSLSTECVCITGVKCTTNLMPAEKIKSSMTQLSTTTVCKTDPQREPKGIL
RHVKNLAELEKSVANMYSQIEKNYLRTNVSELQTMCPSEVTNMEITSEQNKGSLNNIVEGTEKQSHSQST
SL

TRTRPLE - GFP Tag - V

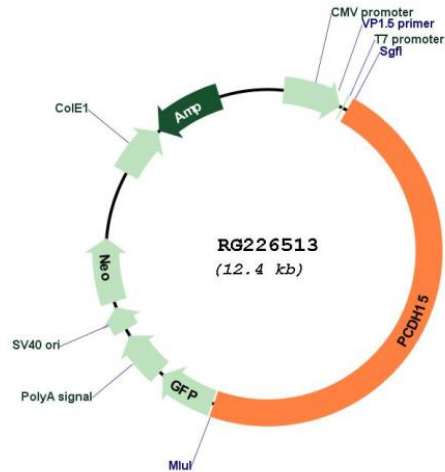
Restriction Sites:

Sgfl-MluI

Cloning Scheme:



Plasmid Map:



ACCN: NM_001142763

ORF Size: 5886 bp

OTI Disclaimer: The molecular sequence of this clone aligns with the gene accession number as a point of reference only. However, individual transcript sequences of the same gene can differ through naturally occurring variations (e.g. polymorphisms), each with its own valid existence. This clone is substantially in agreement with the reference, but a complete review of all prevailing variants is recommended prior to use. [More info](#)

OTI Annotation:	This clone was engineered to express the complete ORF with an expression tag. Expression varies depending on the nature of the gene.
Components:	The ORF clone is ion-exchange column purified and shipped in a 2D barcoded Matrix tube containing 10ug of transfection-ready, dried plasmid DNA (reconstitute with 100 ul of water).
Reconstitution Method:	<ol style="list-style-type: none">1. Centrifuge at 5,000xg for 5min.2. Carefully open the tube and add 100ul of sterile water to dissolve the DNA.3. Close the tube and incubate for 10 minutes at room temperature.4. Briefly vortex the tube and then do a quick spin (less than 5000xg) to concentrate the liquid at the bottom.5. Store the suspended plasmid at -20°C. The DNA is stable for at least one year from date of shipping when stored at -20°C.
RefSeq:	NM_001142763.2
RefSeq Size:	7042 bp
RefSeq ORF:	5889 bp
Locus ID:	65217
Cytogenetics:	10q21.1
Protein Families:	Druggable Genome, Transmembrane
Gene Summary:	<p>This gene is a member of the cadherin superfamily. Family members encode integral membrane proteins that mediate calcium-dependent cell-cell adhesion. It plays an essential role in maintenance of normal retinal and cochlear function. Mutations in this gene result in hearing loss and Usher Syndrome Type 1F (USH1F). Extensive alternative splicing resulting in multiple isoforms has been observed in the mouse ortholog. Similar alternatively spliced transcripts are inferred to occur in human, and additional variants are likely to occur. [provided by RefSeq, Dec 2008]</p>