

Product datasheet for **RG226505**

Nuclear Factor 1 (NFIA) (NM_001145512) Human Tagged ORF Clone

Product data:

Product Type:	Expression Plasmids
Product Name:	Nuclear Factor 1 (NFIA) (NM_001145512) Human Tagged ORF Clone
Tag:	TurboGFP
Symbol:	NFIA
Synonyms:	BRMUTD; CTF; NF-I/A; NF1-A; NFI-A; NFI-L
Mammalian Cell Selection:	Neomycin
Vector:	pCMV6-AC-GFP (PS100010)
E. coli Selection:	Ampicillin (100 ug/mL)



[View online »](#)

ORF Nucleotide Sequence:

>RG226505 representing NM_001145512
 Red=Cloning site Blue=ORF Green=Tags(s)

TTTTGTAATACGACTCACTATAGGGCGGCCGGAATTCGTCGACTGGATCCGGTACCGAGGAGATCTGCC
 GCC**CGGATCGCC**

ATGCAAAATGTGCCGCCCGCCTCCTCTCGTTCTCTACGTGCCACGCGGTGGCCCGGGGGTGCAGGG
 CAACCTGGCAAAGTTGCCAAGTCTCCACCGAGACGCACACGCATACCCAGCGCCCGGAGTTATGTA
 TTCTCCGCTCTGTCTACCCAGGATGAATTTTCCTTTTCATCGAAGCACTTCTGCCCCAGTCCGAGCC
 TTTGCCTACACATGGTTCAACCTGCAGGCCGAAAACGAAAATACTTCAAAAAACATGAAAAGCGTATGT
 CAAAAGAAGAAGAGAGAGCCGTGAAGGATGAATTGCTAAGTAAAAACCAGAGGTCAAGCAGAAGTGGGC
 ATCTCGACTTCTGGCAAAGTTGCGGAAAGATATCCGACCCGAATATCGAGAGGATTTTGTCTTACAGTT
 ACAGGGAAAAACCTCCATGTTGTGTTCTTTCAAACCCAGACCAGAAAGGCAAGATGCGAAGAATTGACT
 GCCTCCGCCAGGCAGATAAAGTCTGGAGTTGGACCTTGTATGGTGATTTTGTAAAGGTATCCGCT
 GAAAAGTACTGATGGCGAGCGCCTTGTAAGTCCCACAATGCTCTAATCCAGGGCTCTGTGTCCAACCC
 CATCACATAGGGGTTTCTGTTAAGGAACCTCGATTATATTTGGCATACTTTGTGCATGCAGCAGATTCAA
 GTCAATCTGAAAGTCCCAGCCAGCAAGTGACGCTGACATTAAGGACCAGCCAGAAAATGGACATTTGGG
 CTTCCAGGACAGTTTTGTACATCAGGTGTTTTAGTGTCACTGAGCTAGTAAGAGTGTACAGACACCA
 ATAGCTGCAGGAAGTGGCCAAATTTTTCTCTCTCAGATTTGGAAAGTCTTCACTACAGCATGAGTC
 CAGGAGCAATGAGGAGGTCTTTACCCAGCACATCCTCTACGAGCTCCACAAAGCGCCTCAAGTCTGTGGA
 GGATGAAATGGACAGTCTGGTGAGGAGCCATTTATACAGGCCAAGGGCGCTCCCAGGAAGTGGCAGT
 CAGTCAAGTGGATGGCATGAAGTGGAGCCAGGAATGCCATCTCCAACCACACTGAAGAAGTCCGAGAAGT
 CTGGTTTCAGCAGCCCTCCCTTCACAGACCTCCTCCCTGGGAACGGCGTTACACAGCATCACCGACC
 TGTCAATTACAGGACCCAGAGCAAGTCCGCATGCAACACCATCGACTCTTCAATTTCCCGACATCACCCATT
 ATCCAGCAGCCTGGGCCTTACTTCTCACACCCAGCCATCCGCTATCACCCCTCAGGAGACGCTGAAAAGT
 TTGTCCAACCTGTCTGCCCTGATGCTGGTCCAGGCTGGACAGGTGGGTTCTCAATCCAATGGGAG
 CAGCCAAGGCAAGGTGCACAACCCATTCTTCCCACCCCAATGTTGCCACCGCCACCGCCACCACCGATG
 GCCAGGCTGTGCCTCTGCCGTGCCAGACACAAAGCCTCCAACCACGTCAACAGAAGGAGGTGCAGCCT
 CCCCCACGTCACCAACCTACTCGACACCCAGCACCTCCCCGCAAACCGATTCTGTCAGTGTGGACCAGC
 GGATCAAAGCTTTGTAATATCCCTCAACAGACACAGTCTGGTACCTGGGA

ACGCGTACGCGGCCGCTCGAG – GFP Tag – GTTTAA

Protein Sequence:

>RG226505 representing NM_001145512
 Red=Cloning site Green=Tags(s)

MQMRPASSSVLVYPTRWPGCGATWQSCSPPPRRTRIPQRPVAVMYSPLCLTQDEFHPIEALLPHVRA
 FAYTWFNLQARKRYFKKHEKRMSKEEERAVKDELLSEKPEVKQKASRLLAKLRKDIRPEYREDFLTV
 TGKKPPCCVLSPDQKGMRRIDCLRQADKVRDLVVMVILFKGIPLSTDGERLVKSPQCSNPGLCVQP
 HHIGVSVKELDLYLAYFVHAADSSQSESPSQSDADIKDQPEHGLGFQDSFVTSVGFVSVTELVRSQTP
 IAAGTGPNFSLSDLESSYYSMSPGAMRRSLPSTSSSTSKRLKSVEDEMDSPGEEPFYTGQGRSPGSGS
 QSSGWHEVEPGMPSPTLLKSEKSGFSSPSPSQTSSLGTAFTQHHRPVITGPRASPHATPSTLHFPTSPI
 IQQPGPYFSHPAIRYHPQETLKEFVQLVCPDAGQQAGQVGFVLPNGSSQKVNHPFLPTPMLPPPPPPPM
 ARPVPLVPDTPPTTSTEGGAASPTSPYSTPSTSPANRFVSVGPRDPSFVNIPQQTQSWYLG

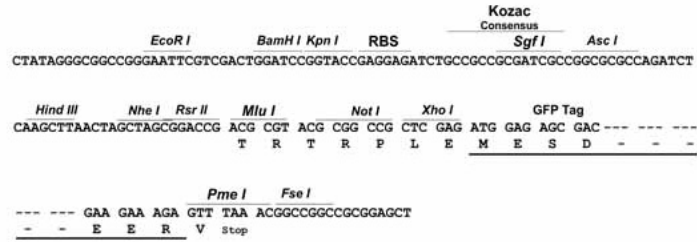
TRTRPLE – GFP Tag – V

Restriction Sites:

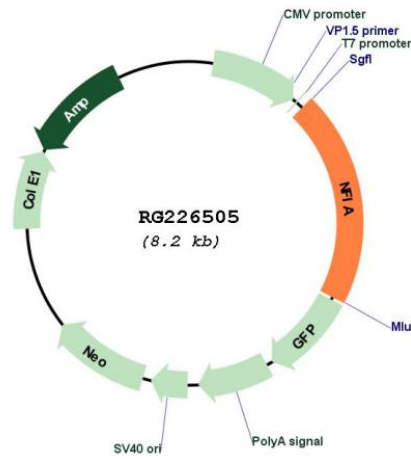
Sgfl-MluI

Cloning Scheme:

Cloning sites used for ORF Shutting:



Plasmid Map:



ACCN:	NM_001145512
ORF Size:	1662 bp
OTI Disclaimer:	The molecular sequence of this clone aligns with the gene accession number as a point of reference only. However, individual transcript sequences of the same gene can differ through naturally occurring variations (e.g. polymorphisms), each with its own valid existence. This clone is substantially in agreement with the reference, but a complete review of all prevailing variants is recommended prior to use. More info
OTI Annotation:	This clone was engineered to express the complete ORF with an expression tag. Expression varies depending on the nature of the gene.
Components:	The ORF clone is ion-exchange column purified and shipped in a 2D barcoded Matrix tube containing 10ug of transfection-ready, dried plasmid DNA (reconstitute with 100 ul of water).
Reconstitution Method:	<ol style="list-style-type: none">1. Centrifuge at 5,000xg for 5min.2. Carefully open the tube and add 100ul of sterile water to dissolve the DNA.3. Close the tube and incubate for 10 minutes at room temperature.4. Briefly vortex the tube and then do a quick spin (less than 5000xg) to concentrate the liquid at the bottom.5. Store the suspended plasmid at -20°C. The DNA is stable for at least one year from date of shipping when stored at -20°C.
RefSeq:	NM_001145512.2
RefSeq Size:	9228 bp
RefSeq ORF:	1665 bp
Locus ID:	4774
UniProt ID:	Q12857
Cytogenetics:	1p31.3
Protein Families:	Transcription Factors
Gene Summary:	This gene encodes a member of the NF1 (nuclear factor 1) family of transcription factors. Multiple transcript variants encoding different isoforms have been found for this gene. [provided by RefSeq, Sep 2011]