

## Product datasheet for **RG226501**

### TM6SF1 (NM\_001144903) Human Tagged ORF Clone

#### Product data:

Product Type:	Expression Plasmids
Product Name:	TM6SF1 (NM_001144903) Human Tagged ORF Clone
Tag:	TurboGFP
Symbol:	TM6SF1
Mammalian Cell Selection:	Neomycin
Vector:	pCMV6-AC-GFP (PS100010)
E. coli Selection:	Ampicillin (100 ug/mL)
ORF Nucleotide Sequence:	>RG226501 representing NM_001144903 Red=Cloning site Blue=ORF Green=Tags(s)

TTTTGTAATACGACTCACTATAGGGCGGCCGGGAATTCGTCGACTGGATCCGGTACCGAGGAGATCTGCC  
GCC**CGATCGCC**

ATGAGTGCCTCTGCGGCCACCGGGTCTTCGTGCTGTCCCTCTCGGCCATCCCGGTCACCTATGTCTTCA  
ACCACCTGGCGGCCAGCATGATTCCTGGACTATTGTAGGGTTGCTGCCCTCATCCTGTTCTGGTAGC  
ACTGCTGGCTCGTGTCTCGTCAAAGAAAACCCCGGACCCACTGTTCTATGTGTATGCAGTTTTT  
GGATTTACCAGCGTGGTGAACCTCATCATAGGACTGGAGCAAGATGGAATCATTGACGGTTCATGACAC  
ACTACTTGAGAGAGGGTGAACCGTATCTGAACACCGCATATGGGCACATGATCTGCTACTGGGATGGCTC  
TGCTCATTATCTGATGTACCTGGTGTGGTGGCAGCCATAGCATGGGAGGAACTTATAGAACCATTGGC  
CTATATTGGGTTGGATCTATTATTATGAGTGTTGTTGTTTTGTGCCAGGAAACATTGTAGGAAGTATG  
GAACACGAATTTGCCCTGCTTTTTCTTAAGCATACCATATACTTGCTTCTGCTGGGCTGGTTTCAG  
AATCTATAATCAGCCATCAGAAAATTATAATTACCCTCAAAGGTTATTCAAGAAGCCAAAGCGAAAGAC  
CTGCTGAGAAGACATTTGATTTAATGTTGTTGTGTCTCCTCCTGGCAACTGGATTTGCTGTTCA  
GAGGTTTGATGCTGGCATATATGTTCTATTCTGTTCCTACTTTGTGACTGCACTGTATGGCTTAGTGGT  
TCCTGGATGTTCTGGATGCCTGACATCATTGATACATGCTGGAGGTCTGGCTCAGGCTCAGTTTTCT  
CACATTGGTGCATCTTTCATGTAGAAGTCTTATGTCTACAGAGTCCCTGAAGAAGCAAAAATCCTTT  
TTTTAGCATTAAACATAGCATATGGAGTTCTTCTCAGCTCTTGGCTATCGTTGTATCTACAAACCAGA  
GTTCTTCATAAAAACAAAGGCAGAAGAAAAAGTGGA

**ACGCGT**ACGCGGCCGCTCGAG - GFP Tag - GTTTAA



[View online »](#)

**Protein Sequence:** >RG226501 representing NM\_001144903  
 Red=Cloning site Green=Tags(s)

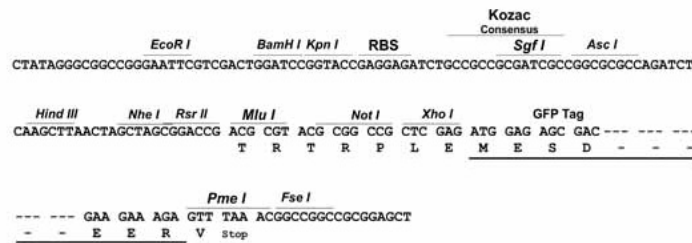
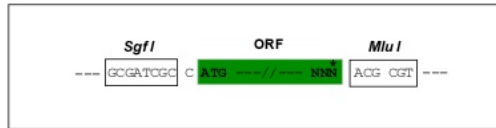
MSASAATGVFVLSLSAIPVTVFNHLLAAQHSWTIVGVAALILFLVALLARVLVVRKPPRDPLFVYVAVF  
 GFTSVVNLIIIGLEQDGIIDGFMTHYLREGEPYLNAYGHMICYWDGSAHYLMYLMVAIIAWEETYRTIG  
 LYWVGSIIIMSVVVFVPGNIVGKYGTRICPAFFLSIPYTCLPVWAGFRIYNQPSSENYNYPKVIQEAQAKD  
 LLRRPFDLMLVCLLLATGFCLFRGLMLAYMFYSVPYFVTALYGLVVPGCSSWMPDITLIHAGGLAQAFS  
 HIGASLHARTAYVYRVPPEAKILFLALNIAYGVLQPQLLAYRCIYKPEFFIKTKAEKVE

TRTRPLE - GFP Tag - V

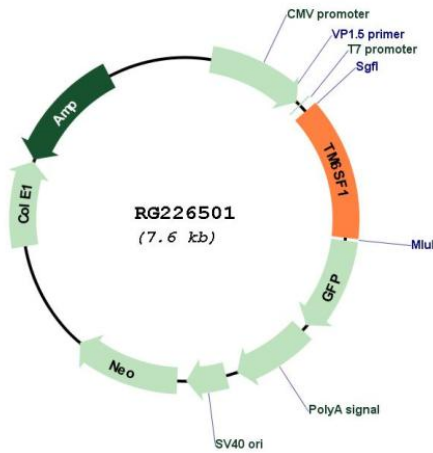
**Restriction Sites:** SgfI-MluI

**Cloning Scheme:**

Cloning sites used for ORF Shutting:



**Plasmid Map:**



**ACCN:** NM\_001144903

**ORF Size:** 1017 bp

<b>OTI Disclaimer:</b>	The molecular sequence of this clone aligns with the gene accession number as a point of reference only. However, individual transcript sequences of the same gene can differ through naturally occurring variations (e.g. polymorphisms), each with its own valid existence. This clone is substantially in agreement with the reference, but a complete review of all prevailing variants is recommended prior to use. <a href="#">More info</a>
<b>OTI Annotation:</b>	This clone was engineered to express the complete ORF with an expression tag. Expression varies depending on the nature of the gene.
<b>Components:</b>	The ORF clone is ion-exchange column purified and shipped in a 2D barcoded Matrix tube containing 10ug of transfection-ready, dried plasmid DNA (reconstitute with 100 ul of water).
<b>Reconstitution Method:</b>	<ol style="list-style-type: none"><li>1. Centrifuge at 5,000xg for 5min.</li><li>2. Carefully open the tube and add 100ul of sterile water to dissolve the DNA.</li><li>3. Close the tube and incubate for 10 minutes at room temperature.</li><li>4. Briefly vortex the tube and then do a quick spin (less than 5000xg) to concentrate the liquid at the bottom.</li><li>5. Store the suspended plasmid at -20°C. The DNA is stable for at least one year from date of shipping when stored at -20°C.</li></ol>
<b>RefSeq:</b>	<a href="#">NM_001144903.3</a>
<b>RefSeq Size:</b>	1816 bp
<b>RefSeq ORF:</b>	1020 bp
<b>Locus ID:</b>	53346
<b>UniProt ID:</b>	<a href="#">Q9BZW5</a>
<b>Cytogenetics:</b>	15q25.2
<b>Protein Families:</b>	Transmembrane
<b>Gene Summary:</b>	May function as sterol isomerase.[UniProtKB/Swiss-Prot Function]