

Product datasheet for **RG226489**

Filamin C (FLNC) (NM_001127487) Human Tagged ORF Clone

Product data:

Product Type:	Expression Plasmids
Product Name:	Filamin C (FLNC) (NM_001127487) Human Tagged ORF Clone
Tag:	TurboGFP
Symbol:	FLNC
Synonyms:	ABP-280; ABP280A; ABPA; ABPL; CMH26; FLN2; MFM5; MPD4; RCM5
Mammalian Cell Selection:	Neomycin
Vector:	pCMV6-AC-GFP (PS100010)
E. coli Selection:	Ampicillin (100 ug/mL)
ORF Nucleotide Sequence:	>RG226489 representing NM_001127487 Red=Cloning site Blue=ORF Green=Tags(s)

TTTTGTAATACGACTCACTATAGGGCGGCCGGAATTCGTCGACTGGATCCGGTACCGAGGAGATCTGCC
GCC**CGATCGCC**

ATGATGAACAACAGCGGCTACTCAGACGCCGGCCTCGGCCTGGGCGATGAGACAGACGAGATGCCGTCCA
CGGAGAAGGACCTGGCGGAGGACGCGCCGTGGAAGAAGATCCAGCAGAACACATTCACGCGCTGGTGCAA
TGAGCACCTCAAGTGCCTGGGCAAGCGCCTGACCGACCTGCAGCGCGACCTCAGCGACGGGCTCCGGCTC
ATCGCGCTGCTCGAGGTGCTCAGCCAGAAGCGCATGTACCGCAAGTTCCATCCGCGCCCCAACTCCGCC
AAATGAAGCTGGAGAACGTGTCCTGGCCCTCGAGTTCCTCGAGCGGAGCACATCAAGCTCGTGTCCAT
AGACAGCAAGGCCATCGTGGATGGGAACCTGAAGCTGATCCTGGGCTGATCTGGACGCTGATCCTGCAC
TACTCCATCTCCATGCCATGTGGGAGGATGAAGATGATGAGGATGCCCGCAAACAGACGCCAAGCAGC
GGCTGCTTGGCTGGATCCAGAACAAGGTGCCCCAGCTGCCCATCACCAACTTCAACCGTGACTGGCAGGA
CGGCAAAGCTCTGGGCGCCCTGGTGGACAACTGCGCCCCGGTCTCTGCCCGACTGGGAGGCTGGGAC
CCCAACCAGCCCGTGGAGAAGCGCCGGGAGGCCATGCAGCAGGCCGACGACTGGCTTGGGGTGCCCCAGG
TCATTGCCCTGAGGAGATTGTGGACCCCAACGTGGATGAGCATTCTGTTATGACCTACCTGTCCAGTT
CCCCAAGGCCAAGCTCAAACCTGGTGCCCTGTTCGATCCAAGCAGCTGAACCCCAAGAAAGCCATCGCC
TATGGGCTGGCATCGAGCCACAGGGCAACACCGTGTGCAGCCTGCCACTTCCCGTGCAGACGGTGG
ACGCGGGCGTGGGCGAGGTGCTGGTCTACATCGAGGACCCTGAAGGCCACACCGAGGAGGCTAAGGTGGT
TCCCAACAATGACAAGGATCGCACCTATGCTGTCTCTATGTGCCCAAGGTGCTGGGTTACACAAGGTG
ACCGTGTCTTTGCTGGCCAGAACATTGAACGCAGTCCCTTTGAGGTGAACGTGGGCATGGCCCTGGGAG
ATGCCAACAAGGTGTCAGCCCGTGGCCCTGGCCTGGAACCTGTGGCAATGTGGCCAACAACCCACCTA
CTTTGACATCTACACTGCGGGGGCCGGCACTGGCGATGTTGCTGTGGTATCGTGGACCCACAGGCGCG
CGGACACAGTGGAGGTGCCCTGGAGGACAAGGGTGACAGCACGTTCCGCTGCACATACAGACCTGCCA
TGGAGGGGCCACATACCGTGCATGTGCCCTTTCGGGTGCCCCATCACCCGAGTCCCTCCCTGTCCA
TGTGTCGAAGCCTGTAACCCCAACGCCTGCCGCGCCTCTGGGCGAGGCTGCAGCCAAGGGTGTTCG



[View online »](#)

GTGAAAGAGGTGGCTGACTTCAAGGTGTTACCAAGGGTGCCGGCAGCGGGGAGCTCAAGGTCACGGTCA
 AGGGGCCAAAGGGCACAGAGGAGCCAGTGAAGGTGCGGGAGGCTGGGGATGGTGTGTTCCAGTGCAGTA
 CTACCCGGTGGTGCCTGGGAAGTATGTGGTGACCATCAGTGGGGCGGCTACGCCATCCCTCGCAGCCCC
 TTTGAGGTACAGGTGAGCCCAGAGGCAGGAGTGCAAAAGTCCGGGCTGGGGTCTGGTTTGGAGACTG
 GCCAGGTGGGCAAGTCAAGCCATTTTGTGGTGAAGCCATTGGCACCGAGGTGGGGACACTGGGCTTCTC
 CATCGAGGGGCCCTCACAAGCCAAGATCGAATGTGACGACAAGGGGGATGGCTCTCGATGTGCGGTAC
 TGGCCACGGAGCCTGGGGAGTACGCTGTGCACGTCTGTGACGATGAGGACATCCGAGACTCACCT
 TCATTGCCACATCTGCCCGCCCCACCTGACTGCTTCCAGATAAGGTGAAGGCCTTTGGGCTGGCCT
 GGAGCCTACCGGCTGCATCGTGGACAAGCCGCTGAGTTCACCATTGATGCTCGTGCAGCTGGCAAGGGA
 GACCTGAAGTCTATGCCAGGACGCCGACGGCTGTCCCATCGACATCAAGGTGATCCCCAACGGCGACG
 GCACCTTCCGCTGCTCTACGTGCCACCAAGCCATTAAGCACACCATCATCATCTCTGGGGAGGCGT
 AAACGTGCCAAAGAGCCCTTCCGGGTGAACGTGGGCGAGGGCAGCCACCCCGAGCGGTAAAGGTGAC
 GGCCCCGAGTGGAGAAGACAGGCCTCAAGGCCAATGAGCCACCTACTCACGGTGGACTGCAGCGAGG
 CGGGGCAAGGCGACGTGAGCATCGGCATCAAGTGCGCCAGGCGTGGTGGGCCCTGCAGAGGCTGACAT
 TGACTTCGACATCATCAAGAATGACAACGACACCTTACCCTCAAGTACACGCCACAGGGGCGGGCCGC
 TACACCATCATGGTGTGTTTGCAACAGGAGATCCCCGCCAGCCCTTCCACATCAAGGTGGACCCAT
 CCCACGATGCCAGCAAAGTCAAGGCCGAGGGCCCTGGGCTGAATCGCACAGGTGTGGAAGTGGGAAGCC
 CACCCACTTACGGTGTGACCAAGGGAGCCGGCAAGGCCAAGCTGGATGTGAGTTCAGGGGACAGCC
 AAGGGCGAGGTTGTGCGGGACTTTGAGATCATAGACAACCATGACTACTCTACACTGTCAAGTACACCG
 CTGTCCAGCAGGGCAACATGGCAGTGACAGTGACTTATGGCGGGGACCCTGTCCCAAGAGCCCTTTGT
 GGTGAATGTGGCACCCCGCTGGACCTCAGCAAAATCAAAGTTCAGGGCCTTAATAGCAAGGTGGCTGTG
 GGACAGGAACAAGCATTTCTGTGAACACAGAGGGCTGGCGGTGAGGGCAACTGGATGTGCGGATGA
 CTTCCGCTTCTCGCCGGCCATCCCTGCAAGCTGGAGCCAGGCGGTGGAGCGGAAGCCAGGCTGTGCG
 CTACATGCCCCCGAGGAGGGGCCCTACAAGGTGGATATCACCTACGATGGTACCCTGGCTGGCAGC
 CCGTTTGTGTGGAGGTTGCTGCCCCCTGATCCCTCCAAGGTCTGTGCTTATGGCCCGGGTCTCAAGG
 GTGGACTGGTAGGCACCCCGCGCATTCTCCATCGACACCAAGGGGGTGGCACAGGTGGCCTGGGGCT
 GACCGTAGAGGGCCCTGCGAGGCCAAGATCGAGTGCCAGGACAATGGTGTGGTGTGCTGTGCTGTCAGC
 TACCTGCCACGGAGCCTGGCGAGTACACCATCAACATCTGTTTGTGAGGCCACATCCCTGGCTCGC
 CCTTCAAAGCCACCATTCGGCTGTGTTTACCCGAGCAAGGTGCGGGCCAGTGGACCGGGCTGGAGCG
 CGCAAGGTGGTGGAGGACCCACCTTCACTGTGGACTGCTCAGAGGCAGGCGAGGCGGAGCTGACCATT
 GAGATCTGTGCGATGCCGGGTCAAGGCCGAGGTGCTGATCCACAACAACGCGGATGGCACCTACCACA
 TCACCTACAGCCCTGCCTTCCCTGGCACCTACACCATTACCATCAAGTATGGCGGGCATCCCGTGGCCAA
 ATTCCCCACCCGTGTCCATGTGCAGCCTGCGGTGATACCAAGTGGCGTCAAGGTCTCAGGGCCTGGTGT
 GAGCCACACGGTGTCTGCGGGAGGTGACCACTGAGTTCAGTGTGGATGCAAGATCCCTAACAGCCACAG
 GCGGCAACCACGTGACGGCTCGTGTGCTCAACCCCTCGGGGGCAAGACAGACACCTATGTGACAGACAA
 TGGGGACGGCACCTACCGAGTGCAGTACCCGCTACGAGGAGGGCGTGCATCTGGTGGAGGTCCTGTAT
 GATGAGGTGCTGTGCCAAGAGCCCTTCCGAGTGGGCGTGACCGAGGGCTGTGATCCCACCCCGTCC
 GAGCCTTCGGGCCAGGCTGGAGGTTGGCTTGGTCAACAAGGCCAACCATTACTGTGGAGACAGGGG
 AGCGGGACCGGGGCCCTTGGCCTAGCCATCGAGGGTCCCTCGGAAGCCAAGATGTCCTGCAAGGACAAC
 AAGGATGGTAGCTGCACCGTGGAGTACATCCCCTTCACTCCTGGAGACTATGACGTCAACATCACCTTCG
 GGGGGCGGCCATCCCAGGGAGCCGTTCCGCGTGCCAGTGAAGGATGTGGTGGACCCTGGGAAGGTGAA
 GTGCTCAGGGCCAGGCTGGGGCTGGTGTGAGGGCCCGGTTCCCTCAGACCTTACAGTGGACTGCAGT
 CAAGCTGGCCGGGCGCCCTGCAGGTGGCTGTGCTGGGCCACAGGTGTGGCCGAGCCTGTGGAGGTGC
 GGGACAATGGAGATGGCACCCACACTGTCCACTACACCCAGCCACTGACGGGCCCTACACGGTAGCCGT
 CAAGTATGCTGACCAGGAGGTGCCACGCAGCCCTTCAAGTCAAGGTCTCCAGCTCATGATGCCAGC
 AAGGTGCGGGCCAGCGGCCAGGCTCAACGCCTCTGGCATCCCTGCCAGCTGCCTGTGGAGTTACCA
 TCGACGCACGGGACGCGGGCAGGGGTTGCTCACTGTCCAGATCTTGGACCCGAGGGTAAGCCAAAGAA
 GGCAACATCCGGGACAATGGGGATGGCAGTACACTGTGCTCCTACCTGCCGGACATGAGTGGCCGGTAC
 ACCATCACCATCAAGTATGGCGGTGATGAGATCCCTACTCGCCCTTCCGCATCCATGCTCTGCCACTG
 GGGATGCCAGCAAGTGCCTCGTACAGTGTCCATTGGAGGCCATGGCCTGGGTGCCTGCCTGGGCCCTCG
 AATCCAGATTGGGCAGGAGACGGTATCACGGTGGATGCCAAGGCAGCCGGTGGGGGAAGGTGACATGC
 ACGGTGTCCACGCCGATGGGGCAGAGCTCGATGTGGATGTGGTTGAGAACCATGACGGTACCTTTGACA

TCTACTACACAGCGCCCGAGCCGGCAAGTACGTATCACCATCCGCTTCGGGGGTGAGCACATCCCCAA
CAGCCCCTTCCACGTGCTGGCCACAGAGGAGCCAGTGGTGCCTGTGGAGCCAATGGAGTCCATGCTGAGG
CCCTTCAACCTGGTCATCCCCTTCGCGGTGACAGAAAGGGGAGCTCACAGGAGAGGTGCGGATGCCCTCG
GGAAGACGGCACGGCCCAACATCACCGACAACAAGGACGGCACCATCACGGTGAAGTATGCACCCACTGA
GAAAGGCTGCACCAGATGGGGTCAAGTATGACGGCAACCACATCCCTGGGAGCCCCTTACAGTCTAT
GTGGATGCCATCAACAGCCGCCATGTAGTGCCTATGGGCCAGGCCTGAGCCATGGCATGGTCAACAAGC
CAGCCACCTTACTATTGTCCACAAAGATGCTGGAGAAGGGGGTCTGCTACTGGCCGTGGAGGGCCATC
CAAGGCAGAGATCACCTGTAAAGACAACAAGGATGGCACCTGCACCGTGTCTATCTGCCGACTGCGCCT
GGAGACTACAGCATCATCGTGCGCTTCGATGACAAGCACATCCCAGGGAGCCCCTTACAGCCAAGATCA
CAGGTGATGACTCCATGAGGACCTCACAGCTGAATGTGGGCACCTCCACGGACGTGCTACTGAAGATCAC
CGAGAGTGATCTGAGCCAGCTGACCGCCAGCATCCGTGCCCTTCGGGCAACGAGGAGCCCTGCCTGCTG
AAGCGCTGCCCAACCGGCACATTGGGATCTCCTTACCCCCAAGGAGGTGCGGGAGCACGTGGTGAAGC
TGCGCAAGAGTGGCAAGCATGTACCAACAGCCCTTCAAGATCCTGGTGGGGCCATCTGAGATCGGGGA
CGCCAGCAAGGTGCGGGTCTGGGCAAGGGCTTCCGAGGGACACACATTCCAGGTGACAGAGTTCATC
GTGGACTCGCAATGCAGGTTATGGGGCTTGGGGCTGAGTATTGAAGGCCAAGCAAGGTGGACATCA
ACTGTGAGGACATGGAGGACGGGACATGCAAAAGTCACTACTGCCACCAGGACCCGGCACCTACATCAT
CAACATCAAGTTTGTGACAAGCACGTGCTGGAAGCCCCTTACTGTGAAGGTGACCGGCGAGGGCCGC
ATGAAGGAGAGCATCACCCGGCGGAGACAGGCACCTTCCATCGCCACCATCGGCAGCACCTGTGACCTCA
ACCTCAAGATCCCAGGAAACTGGTTCAGATGGTGTCTGCCAGGAGCGCCTGACACGCACCTTACACAG
CAGCAGCCACACCTACACCCGCACGGAGCGCACGGAGATCAGCAAGACCGGGGCGGGGAGACAAAGCGC
GAGGTGCGGGTGGAGGAGTCCACCCAGTTCGGCGGGGACCCCTTCCCTGCTGTGTTGGGACTTCTCTG
GCCGGGAGCGCTGGGATCCTTCGGCAGCATCACCCGGCAGCAGGAGGGTGAAGCCGAGAGATCGTGAAG
GACTGCACAGGTGACCAAGCCATCGGGCAAGGTGGAAGCCGAGAGATCGTGAAGGCGAGGACAGCGCC
TACAGCGTGCCTTTGTGCCCGAGGAAATGGGGCCCATACGGTGCCTGTCAAGTACCGTGGCCAGCACG
TGCCCGGACAGCCCTTTCAGTTCCTGTGGGGCCGCTGGGTGAAGGTGGTGGCCACAAGGTGCGGGCCGG
AGGCACAGGGCTGGAGCGAGGTGTGGCCGGCTGCCAGCCGAGTTCAGCATCTGGACCCGGGAGGCTGGC
GCTGGGGGCTGTCCATTGCTGTGGAGGGTCTAGCAAAGCGGAGATTGCATTTGAGGATCGCAAAGATG
GCTCCTGCGGCTCTCCTATGTCGTCCAGGAACAGGTGACTATGAGGTCTCCATCAAGTTCAATGATGA
GCACATCCAGACAGCCCTTGTGGTGCCTGTGGCCTCCCTCTCGGATGACGCTCGCCGCTCACTGTC
ACCAGCCTCCAGGAGACGGGCTCAAGGTGAACCAGCCAGCGTCTTTGCCGTGACGCTGAACGGTGCCC
GGGGCGTGATTGATGCCCGGGTGCACACACCCTCGGGGGCTGTGGAGGAGTGTACGCTCTGAGCTGGA
CAGTGACAAGCACACCATCCGCTTATCCCCACGAGAATGGCGTCCACTCCATCGATGTCAAGTTCAAC
GGTGGCCACATCCCTGGAAGTCCCTTCAAGATCCGCGTTGGGGAGCAGAGCCAGGCTGGGACCCAGGCT
TGGTGTACGCTACGGTCTGGGCTCGAGGGAGGCACTACCGGTGTGTCATCAGAGTTTATCGTGAACAC
CCTGAATGCCGGCTCGGGGGCTTGTCTGTACCATTGATGGCCCTCCAAGGTGCAGCTGGACTGTGCG
GAGTGTCTGAGGGCCATGTGGTCACTTACTCCCATGGCCCTGGCAACTACCTATTGCCATCAAGT
ACGGTGGCCCCAGCACATCGTGGGCAGCCCTTCAAGGCCAAGGTCACTGGTCCGAGGCTGTCCGGAGG
CCACAGCCTTACGAAACATCCACGGTTCCTGGTGGAGACTGTGACCAAGTCTCTCAAGCCGGGCTCC
AGCTACAGCTCCATCCCCAAGTTCTCTCAGATGCCAGCAAGGTGGTACTCGGGGCCCTGGGCTGTCCC
AGGCCTTTCGTGGGCCAGAAGAATCCTTACCGTGGACTGCAGCAAAGCAGGCACCAACATGATGATGGT
GGGCGTGACGGCCCAAGACCCCTGTGAGGAGGTGTACGTGAAGCACATGGGGAACCGGGTGTACAAT
GTCACCTACTGTCAAGGAGAAAGGGACTACATCCTCATTGTCAAGTGGGGTACGAAAGTGTCCCTG
GAAGCCCCTTCAAGTCAAGTCCCT

ACGCGTACGCGGGCCGCTCGAG - GFP Tag - GTTTAA

Protein Sequence: >RG226489 representing NM_001127487
 Red=Cloning site Green=Tags(s)

```

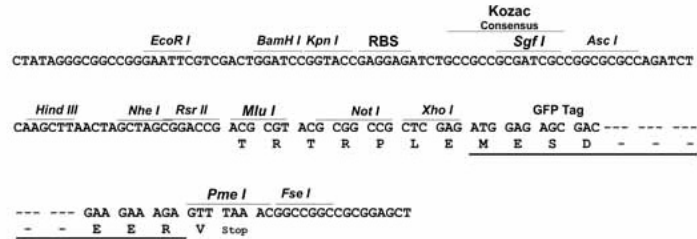
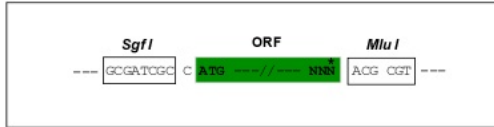
MMNNSGYS DAGLGLGDETDEMPSTEKDLAEDAPWKKIQQNTFTRWCNEHLKCVGKRLTDLQRDLSDGLRL
IALLEVL SQKRM YRKFHPRPNFRQMKLE NVSVALEFLEREHIKLVSIDSKAIVDGNLKLILGLIWTILH
YSISMPMWEDEDEDARKQTPKQRL LGWIQNKVPLPITNFNRDWQDGKAL GALV DNCAPGLCPDWEAWD
PNQPVENAREAMQQADDWL GVPQVIAPEEIVDPNVDEHSVMTYLSQFPKAKLKP GAVRSKQLNPKKAI A
YGP GIEPQGN TVLQPAHF TVQTV DAGVGEVL VYIEDPEGHTEEAKVVPNNDKDRYAVSVYV PKVAGLHKV
TVL FAGQNIERSPF EVNVGMALGDANKVSARGPGL EPVGNVANKPTYFDIYTAGAGTGDVAVVIVDPQGR
RDTVEVALEDKGDSTFRCTYRPAMEGPHTVHVA FAGAPI TRSPFPVHVSEACNP NACRASGRGLQPKGVR
VKEVADFKVFTKGAGSGELKVTVKGPKGTEEPVKVREAGDGVFECEYYPVPGKYVVTITWGGYAI PRSP
FEVQVSPEAGVQK VRAWGPGL ETGQVGSAD FVVEAIGTEVGT L GFSIEGPSQAKIECDDKGDGSCDVRY
WPTPEGEYAVHVICDDEDIRDSPFIAHILPAPPDCFPDKVKAFGPGLEPTGCIVDKPAEFTIDARAAGK
DLKLYAQDADGCPIDIKVIPNGDGTFRCSYVPTKPIKHTIIISWGGVNVPKSPFRVNVGEGSHPERVKVY
GPGVEKTGLKANEPTYFTVDCSEAGQGDV SIGIKCAPGVVGP AEADIDFDI IKNDNTFTVKYTPPGAGR
YTIMVLFANQEIPASPFHIKVDPSHDASKVKAEGPGLNRTGVEVGKPTHFTVLTGAGKAKLDVQFAGTA
KGEVVRDFEIIDNHDSYTVKYTAVQQGNMAVTVTYGGDPV PKSPFVNVNAPPLDL SKIKVQGLNSKVAV
GQEQA FSVNTRGAGGQQLDVRMTSPSRPIPCKLEPGGGAEQA VRYMPP EEGPYKVDIT YDGHVPVGS
PFAVEGVLPPDP SKVCA YGPG LKGLVGT PAFPSIDTKGAGTGG LGLTVEGPCEAKIECQDNGDGS CAVS
YLPTEPEGEY TINILFAEAH IPGSPFKATIRPVFDPSKVRASG PGLERKGVGEAATFTVDCSEAGEAELTI
EILSDAGVKA EVL IHNADGTYHITYSPAFPGTYTITIKYGGHPVKFPTRVHVQPAVDTS GVKVSGPGV
EPHGV LREVTTFTVDARSLTATGGNHVTARVLNPSGAKTDTYVTDNGDGT YRVQYTA YEEGVHLVEVLY
DEVAVPKSPFRVGVTEGCDPTRVRAFPGLEGLVNKANRFTVETRGAGTGG LGLAIEGSEAKMSCKDN
KDG SCTVEYIPF TPGDYD VNI TFGGRPIPGSPFRVPKDVDPGKVKCSG PGLGAGVRARVPQTF TVDCS
QAGRAPLQVAVL GPTGVAEPVEVRDNGDGTHTVHYTPATDGPYTVAVKYADQEVPRSPFKIKVLP AHDAS
KVRASG PGLNASGIPASLPVEFTIDARDAGEGLLTVQILDPEGPKKANIRDNGDGT YTVSYLPDMSGRY
TITIKYGGDEIPYSPFRIHALPTGDASKCLVTVSIGGHGLGACLGPRIQIQGETVITVDAKAAGEGKVT
TVSTPDGAELD VDVVENHDGTFDIYYT APEPGKYVITIRFGGEHIPNSPFHVLATEEPVVPVEMPESMLR
PFNLVIPFAVQK GELTGEVRMP SGKTARPNI TDNKDGTITVRYAPTEKGLHQMIK YDGNH IPGSPLQFY
VDAINS RHVSAYG PGLSHGMVNK PATFTIVTKDAGEGGLSLAVEGPKSAEITCKDNKDG TCTVSYLPTAP
GDYSII VRFDDKHIPGSPFTAKITGD DMSRTSQLNVGTSTDVSLKITESDL SQLTASIRAPSGNEEPCLL
KRLPNRHIGISF TPKEVGEHVSVRKS GKHVTNSPFKILVGPSEIGDASKVRVWGKGLSEGHTFQVAEFI
VDRNAGYGG LGLSIEGPSKVDINCE DMEDGTCKVTYCPTEPGTYIINIKFADKHVPGSPFTVKVTGEGR
MKESITRRRQAPS IATIGSTCDLNLKIPGNWFQMVSAQERL TRTFTRSSHTYTRTERTEISKTRGGETKR
EVRVEESTQVGGDPFPAVFGDFLGRERLGSFGSITRQGEGEASSQDMTAQVTS PSGKVEAAEIVEGEDSA
YSVRFVPQEMGPHTVAVKYRQGHVPGSPFQFTVGPLGEGGAHKVRAGGTGLERGVAGVPAEFSIWTREAG
AGGLSIAVEGPKAEIAFEDRKDGSCGVS YVVQEPGDYEVSIKFNDEHIPD SPFVVPVASLSDDARRLTV
TSLQETGLKVNQPASF AVQLNGARGVIDARVHTPSGAVEECYVSELSDSKHTIRFIPHENGVHSIDVKFN
GAHIPGSPFKIRVGEQSQAGDPGLVSAYGPGLEGGTTGVSSEFIVNTLNAGSGALSVTIDGSPKVLDCR
ECP EGHVVYTYTPMAPGNYLIAIKYGGPQHIVGSPFKAKV TGPRLSGGHSLHETSTVLVETVTKSSSRGS
SYSSIPKFS SDAKVVTRGPGLSQAFV GQKNSFTVDCSKAGTNMMVGVHGPKTPCEEVYVKHMGNRVYN
VTYTVKEKGDYILIVKWGDESVP GSPFKVKVP
  
```

TRTRPLE - GFP Tag - V

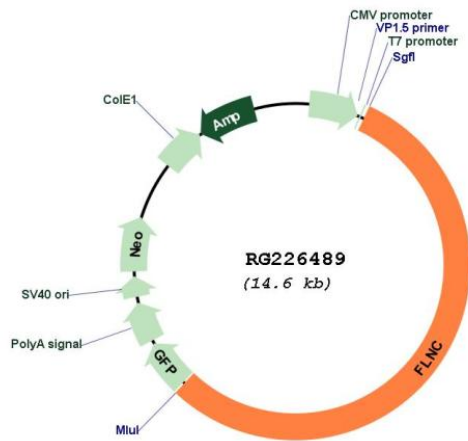
Restriction Sites: Sgfl-MluI

Cloning Scheme:

Cloning sites used for ORF Shutting:



Plasmid Map:



ACCN:	NM_001127487
ORF Size:	8076 bp
OTI Disclaimer:	The molecular sequence of this clone aligns with the gene accession number as a point of reference only. However, individual transcript sequences of the same gene can differ through naturally occurring variations (e.g. polymorphisms), each with its own valid existence. This clone is substantially in agreement with the reference, but a complete review of all prevailing variants is recommended prior to use. More info
OTI Annotation:	This clone was engineered to express the complete ORF with an expression tag. Expression varies depending on the nature of the gene.
Components:	The ORF clone is ion-exchange column purified and shipped in a 2D barcoded Matrix tube containing 10ug of transfection-ready, dried plasmid DNA (reconstitute with 100 ul of water).
Reconstitution Method:	<ol style="list-style-type: none">1. Centrifuge at 5,000xg for 5min.2. Carefully open the tube and add 100ul of sterile water to dissolve the DNA.3. Close the tube and incubate for 10 minutes at room temperature.4. Briefly vortex the tube and then do a quick spin (less than 5000xg) to concentrate the liquid at the bottom.5. Store the suspended plasmid at -20°C. The DNA is stable for at least one year from date of shipping when stored at -20°C.
RefSeq:	NM_001127487.1 , NP_001120959.1
RefSeq Size:	9050 bp
RefSeq ORF:	8079 bp
Locus ID:	2318
UniProt ID:	Q14315
Cytogenetics:	7q32.1
Protein Pathways:	Focal adhesion, MAPK signaling pathway
Gene Summary:	This gene encodes one of three related filamin genes, specifically gamma filamin. These filamin proteins crosslink actin filaments into orthogonal networks in cortical cytoplasm and participate in the anchoring of membrane proteins for the actin cytoskeleton. Three functional domains exist in filamin: an N-terminal filamentous actin-binding domain, a C-terminal self-association domain, and a membrane glycoprotein-binding domain. Two transcript variants encoding different isoforms have been found for this gene. [provided by RefSeq, Jul 2008]