

Product datasheet for **RG226482**

URB1 (NM_014825) Human Tagged ORF Clone

Product data:

Product Type:	Expression Plasmids
Product Name:	URB1 (NM_014825) Human Tagged ORF Clone
Tag:	TurboGFP
Symbol:	URB1
Synonyms:	C21orf108; NPA1
Mammalian Cell Selection:	Neomycin
Vector:	pCMV6-AC-GFP (PS100010)
E. coli Selection:	Ampicillin (100 ug/mL)
ORF Nucleotide Sequence:	>RG226482 representing NM_014825 Red=Cloning site Blue=ORF Green=Tags(s)

TTTTGTAATACGACTCACTATAGGGCGGCCGGGAATTCGTCGACTGGATCCGGTACCGAGGAGATCTGCC
GCC**CGATCGCC**

ATGGGGTCCCCAAGAGGAAGGCCTCGGGCGGCCAGGACGGCGGGCTTCTCCGCGGTGCAGCCAAGC
GCGCCCGCAAAGAAGAGCTCACGGCGTGCAGTCAAGGCTCAGCTGAAGGACCCGAGGCCCGGGCC
AGGCTTGAAGCGTTTGTGTCTGCTGCCAAGAAGCTACCACGAGAAGATGTGTATGATGTTGTGGAAGG
TATATAAAGATTTCTGTTGAGTGTGCGAAATTTCCAGCTCCTAAGTGGAGAGAAACGACCTGAAAGT
AAACGATGTTAATATTTCAAGTTTTCGAGGCCATATTATTGCGGACAGCAAGTGATCTTTCACATTTCCA
TGTTGTGGGAACCAACATTGTGAAAAAGCTGATGAACAACCACATGAAGCTCATCTGTGAGTCCCTGTAT
GCCTCAGGTTACAGGTTGGCTCGCGCCTGCCTGAGCCTGATGACCGCCATGGTGACCCAGGGTCCGGAAG
CTGCCAGGGACGTCTGCAGCCATTTTGAATTTGAAATAAAAAGACCTGTACACCCTGGTGACCAAGAGGGA
TTCAAAGGGAGTGTACGACGTTCCGGCAGGCCTACGTTTCAAGTTTGTCTCTCTCTCTTTTAAATTGCGGGT
GATGACAGCACTATAGTGCAGGTGTTGGAAGTGAAGAATTTATTCCTTGCATTTTGTAGCTCAGGGATAAAGG
AAGATAGGATCTCTACCATCAATATTTTATTATCCACACTGAAAACAAAGGTAGTTCACAATAAAAAAT
CACAAAAACCCAGAAGGTGCGTTTTTTACGGGCGAGTTATTGAACCACATAGCATCGCTGTACAACCTGG
AATGGGATTACCGATGTGAACCCAGAAAATGTCAAGTTTCTGCCGAAGAAGCAGGAAAACCATGGTGC
GGGAGCTTGTTCATAACTTCTGATGGATCTTTGCTGTTCACTCAAGCATGGAATTAATTTTTACGATGC
ATCTTTGGGTACCTTTGGCAGAGCGGAAAACCTGACACTCTTGCACTTCTGCTGGGTTTAAAACCTGCA
GCTGATGATGATCTGGTGGCTGACCTTGTGGTAAACATCCTCAAAGTGTGCCCGACTTACTGAACAAAT
ACTTCAAGGAAGTAACGTTTTCTTTATCCACGAGCGAAGTCTACTTGGTTAAATAATATCAAACCTACT
AAACAAGATCTATGAGGCTCAGCCGGAGATTTCCCGGCATTTCCAGACCAGAGAGTTTATACCCTTGCT
CGGCTCCTGGCAATGGTATGGTGACCACCGTCCCTGGTGTGCAATAAGAGCATGTTCCCAAGCAT
TAAACTTGACAGCACCTCAGTGAGGCACACAGCCTTATCCCTTATTTCTGTCTTTTGAAGAGGGCATT
AAAACCTGTTGACCACTGCCTGAATAAAGAGGTGTGGCAGGAATCAGCGTGTACACAGCTGTGATGATG



[View online »](#)

GAAGAATTCGTGCAGCTCTTCAGAGAAGCCCTGAGCAAGATTTTCCAGACCTGAACACTGTCGTGTGGG
 TCTGGCAGTCACTTAAAAAGCAAGAGACCAAACAGGATGACAAGAAAGGGCAGAAAAGGAGCGATGGGCC
 CCCGGTGCCTGCGATGCTCACCAGTGCATGATGCAGAAACCATTCTTTTAAAAGCTGTTTTGCTCCAG
 GTCATATGCCTCTACCAGAAGGTGGTCCCCACGTGGTCATGCAGTACAACCTTTGACTTCAGCAAGCTCC
 TGAAAGGTGTATCTCTGAGCAGGGCCTTCGAGAGGAGGTGCCTCCCATTCTGCAGCACCACATGCTGAA
 GGTGGCCCTGGAGCTGCCGGCCAGCAAGTTTCTGTGGTTAAAGGCACAGGAAGGCCCAGATGCAGAAATT
 ATTGGAGGTGAACGATCAGTATTTTACTTACTAATGAAAATGTTTGTGACCAGTAGCCATTTACAACCTGA
 AGTCATTGACCAAACCTTCTGATCATGAAGATTCTGCGGGACACGGGGGTGTTTGAGCACACCTGGAAGGA
 GCTGGAGCTCTGGCTGGAGCATTAGAGAACACCATGGAAGAGGACAAAGAGACTGTGATTCAAGTTTCTG
 GAACGCATTTTATTGACATTGGTGGCGAATCCCTATTCATACACAGACAAAGCATCTGACTTTGTCCAAG
 AAGCAAGCATGCTGCAGGCCACTATGACGAAGCAAGAAGCCGATGACATGAGCATTCCCATCTCCCACAT
 TGACGATGTTCTCGACATGGTGGATGCTCTGGTGGAGGGCAGTGAAGGCTTGGATGAGGAAATAGGGTTC
 ACGTTGAGTGAAGACATGATCCTGCTCACGTTCCCATTCAGTCCGAGTCCCTGCGGCCCTGGAAGCCA
 GGAATAAGTTGCTCCTGGGACAGGCAATGAAGCAGCGGAAAACGTTGTGACATATCTGACGGCAGTGTCT
 GACTGACCTCCTCCACACCCAGAGGGACCCCTGGCTCTGTGTCTCCTGCTCCAGGCATATGATAAGCTT
 GAGCCTCCATGCCTGGTGCCTTGTCTGCCAGCAGCTCTCACGGTTAACAGATACTACAGCCTCTGGATCC
 CGGAGCAAGCCCAGAGGGCTGGCTGCTGCAGGCACAGGGCAGCCCTCGCCCCCTGCCCTTCCCTTGGC
 CTCGTCTTACAGCCCTGCTGCAGGCAGCCTACGAGAGCCAAGCGCTTCGGGACGAGCACATCCAGGTG
 CAGCTGCAGGCCACCATGCCACACCTGTCCATGCAGCAGGTCTGCTCGCGGCCAAGCAGGTGTTGCTCT
 ACCTGCGGAGCACTGTGGAGAATTTCGGCCAGCTGGGCAGAAAGTGGGCCCGCCCTCTGCAGCTCTT
 CCTGGATCTCCTCAGGCGCTGGTTGTCCACTGTGAGCAGCTGGATGCCAGAACCAGCAGAGATGCGAG
 GCCGCCCGGGCCGAAGCCGACCTTCTCTGGACATGGAGTCCGTGGCCTCGTGGAGTTGGCCAAATGATC
 AGACGCTGGAGGAGTGTCTGTGGCCATCCTCAGGCACCCACCCCTGGAGGGCTGGTTCTCGGCCCTGGA
 GCAGAGCCCTCCCGCCGACACAGCTCAGCCCTGCTCCTGTAAGCTCCTGGCCACCCACTTTAGTGCA
 GGGGTCTTCAGCTGCTGGCAGCAAGTGCCCGATCCTCCAGAACATTGGGCAGCTGGGCCCTTCTGGCCA
 GGTACTCAGAGGCCATCACCCAGAGTGTGCTGAAGGAACTTCAGAACAGGAGGGCGGGCCCGCCACATC
 ACCACCAAAGACCCCGCCGACGCTGGAGGCCCTGCAGGAGCTGCATCCATACATGGAGGGTGGCCAGCTC
 CGTGAGGTCAACCTGGCCTTGTGAGCCTGCTGAGACACACCTGGTGACCCAGCAACCCACGAAATCCC
 CCGGAAGGAAAGACACCTGAATGCTCTTGAAAGACCCCTGGTGCAGCTGCTGACCTGCAGCCCCAGGA
 TCAGCTGCAGAGTGGTGTGCTCCTGTGGTCTCCGAGTATGTGAGAGGCCTGGGGCTCTGCTGCCACG
 CTAGCAGTGGACGAGCTGGACACAGTGTCTCCTCCACACTCTGCAGAGAGACCCTGTGCTGGCCCCGCG
 TCGGGGCTGATCTGCTTACTACTGCTGGCCCCGCGCACACAGGCGGCCCTCAGCATCGCTGCCCTGCT
 CCTCCAGGAGAGCTGCACCCACTTGTGTGGTTCGAGCAGTGGTGCCTGCAGGCTGGCCCAGGGCTCGGC
 CTCCAGGGGGACCTGGACGACTTCTTCCCTCATCCATGTGTACCTCCAGTGCAGGACACGGAGCCACT
 TCACACGCCAGCAGGAGTGTCTCCGCTGTACTTCTGTCTTGGAGGAGACCCTGTGGAGGCAGCTACA
 GAGCAGGCTTCTTAGCACTGACAGTCCCCAGCATCTGGGCTGTACCAGGAGATCCTGGCACAGCTGGTC
 CCGTTTGCAGGACCAAGGATCTCAGTGTACTCATGGACCGCCTGCCAGCTTGTTCACACCCAAAGCA
 GTCACAAGAGGTGGATCGTGGCCGACTCCATTTACAGCAGCTCTGGAAGGGTGCAGAGAAGAGCTGTGTG
 CTGGAGAAGGACCCTTTTGGAGTCTGTGTAAGTGGTGTGATCGTGTCTTTCAGTGGTGGACAGCAAGAT
 GATGATAATACTCAGAATCAGGAGAAGGAAATGCTGCTTAGATTAATGCGTTGTTGCATGCACTTAATG
 AAGTTGATCCTGGTACTGGCAGAAATTCGTGAAGAAGGACTCAAATTTCCGTACCAGGACCACACATT
 TTTAAAGATGCTCCTCACCGCGTACAGCTCCTGTACAGCCAGAAAGCTCCGTGCGCACGAAGCTCATC
 CAGCTCCCGTGGTCTACGTGATGCTCATGCAGCACTCGTGTCTTCTGCCGACTTACTGACGTCTGACG
 GAGAGGAGAGCCCGACAGCCAAGTAAAAGAAGCGCTGGTGGACCTGATGCTGACGGTGGTGGAGATGTG
 CCCCTCTGTCTGTGAGAGCAGCCACTTTGCAGTGTCTCTCGGGCCTATGGCGCCACTCTCAGCGTCTTA
 GATCAGAAGATTTTACTTCTGCTTCGAGCGTATGAGCAGAACAAGCTCAGCCTCATCAACTTCAGGGTGC
 TGCTGTGGGGCCAGCGCGTGGAGCATCACAAGACGTGCCGGAGCCTGGCAGGTCACTGTGGCAGCA
 GCCGAGTGTCCGGGACATCCTTCGCTGCTGGACCGGGACCGGATGATGCAGACCATCCTGCACTCCCC
 CAGAACCAGGAGGCTGCTGCCCCCGAGGACACACAGGAGCTGATTTCAAAGACAAAAGCAGGGTGGATC
 TTGATGGCCTCTATGACCCTGCTTCTCCTTCAGCTCTTCAGTGTGAGCTGACCAGGCCAGAGTTTGTGGT
 GGATTGTGCAAAAATTTTGGATTCAAAATGCTCTGGGCCTAACTGTACAGCCCTCAGCAGCTATGACCCC
 CAGATGCGAGCCATAGCCTACCATGTCTGGCGCCTACTACTCGCACTTGGAGGGCGCACGGTTCCAAG

AGCAGTCCCAGCTACTTTACCTGTTGGATGTAGTCCGGAATGGGATTCGAACTCAGGACATGAGACTTAC
TTTTACCTTGGCTCTCTTCATTGCCAAAGCAGCCCTGCAGATTTTGAACCAGAGGAGCACATGTACCTG
AAGGTCAGCAACTTCTGCTGTCGCATGAGTACTTGAACATGGACAAAGTGCCAGGCTTCTACCAGTTCT
TCTACAGCTCCGACTTTGAGCAAAAAACAGAGCAGAAGTGGGTGTTTGGCGTTCTGCGGCAGGGGATCCG
TGACAAGCAGTGCTACGAACTGTGTGCCCGCGTGGCATCTTCCACATCATCCTGTCTTCTTCCACAGC
CCGCTGTGTGACGAGGCAGCACAGAATTGGATTCTGAAAATTCTACAGAATGTGCCAGGTTGCCAGAT
CTGCGTATGAAATCATACGAGACTATAGCCTTTAACATGGATTTACACATCCTTGAAGCAAGTTTCT
GGAGACTCCGCTGCTGTCTAATGTGATCTCCTTGCTACACACACTGTGGGTGACCAACCTGGGGGACAAG
GCAGTGGAGTGGGAGAGCCAGCGCCTTTGCCAGCCTAGCTCCCAGGAGCCTGCCAAGCGGCTTGCCCTGC
ACCTGGTCAATGAGTTTCTTTATGTTTCTCATCGTGCTCATGAAGCACCTGAGGCCACCTTGGCCCCGT
CCAGCTGACCAACTTCTCGGGACACTTGACTCCGTGCTGAGGTACCGGGCCACTGTCATACAGGCTTT
AGGGACATGAACAGATTCACCGTAAATGAGACAGTGCTTCCACCAAGGACGCTTGTCTCTTGACACA
AGTGGAGCCTCATTGAAAGAGACCTCAAGCTCCAGGAAGACCTGAGAGCAGCCATTGAGAAGGCCAAGC
CCGGGAGCTCATGAAAATGCTCAAGGATAAGAACAAGCCTGTATGCCAGCCGAGCCAAAGGCCACGG
GGCCGAAAGAGGAGGCCCTGGGGAGGCAGAGGAGATGGCTGACCCTGAGCTGATGGCATCTACCTTGAGA
CATGCAAGGGCCTCCTGAGGTCCATCTTGACTTACTGGAGACCAGTGATCCCTGGTCTGACCCCACTCA
GGAGCCTGTGGACTCAGCCAGCCCCGAGAGCGATGCGCCAGGCCCCGTATATGCTGCCGCTTCCCTGGCA
GTCAGTTGGGTGCTGCGGTGCGTGGCCGAGCACCCGCTCAGCAGGGCAGAGGCTGCAGGACTCATTGGCT
GGCTTAAGAGCCATATTTGCCACACCCTGTGGTGGTGGCTGACCTCCTTAAGGACAGTGCCGTGAGGAG
CAGCATATTCAGGCTGTATAGCCGGCTCTGTGGGGCTGAGGGGCTGGCAGGGCCTGTGCAGGAGGTGGCC
TGCCTGTTCAATACGGTCATGCTGCAGCTGGTGGCTGCCAGGGCCGGCAGGGAGCCCCCTTCCACCCGG
CCATGGAAGCCCTCTCCCTGTCTTCTCTGAGTGAGAAGGATGAAGCCACACAAGCCTCCGCAGCATTCT
AGTGTCTCTACATAAAGGACATCTGGCTGGGGGCTCAGCGGCCGGACACCCTTAACCCACGTCCGG
ATGGTGTGTGAGGCCGCAGATGATGCCCGAGCAGTGAAGAGGAGGCCATCGTGGTGTCTGCAAGGACG
CCGCCAGCGCAGCCTCAGATGCT

ACGCGTACGCGGCCGCTCGAG - GFP Tag - GTTTAA

Protein Sequence: >RG226482 representing NM_014825
 Red=Cloning site Green=Tags(s)

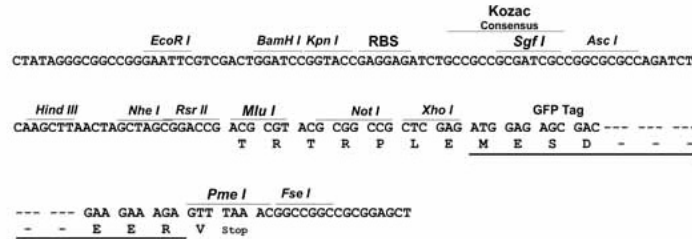
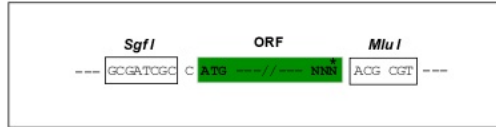
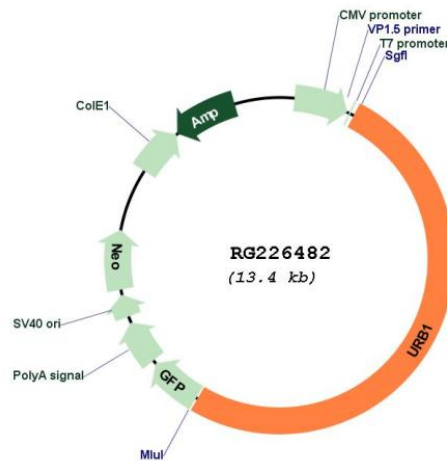
MGVPKRKASGGQDGAASSAGAARKEELTGVRFKAQLKDPQGGPGLLEAFVSAAKKLPREDVYDVVEG
 YIKISVECVEIFQLLSGEKRPESETMLIFQVFEAILLRRTASDLSHFHVVGTTNIVKLLMNNHMKLICESLY
 ASGYRLARACLSLMTAMVTQGPAAARDVCSHFIDLNKKTLVTLVTKRDSKGVYDVRQAYVQFALSFLIAGD
 DSTIVQVLEVKFIPCFIFSSGIKEDRISTINILLSTLTKVHVHNKNITKTQKVRFFTGQLLNHIASLYNW
 NGITDVPENVKVSAEEAGKTMVRELVHNFLMDLCCSLKHGINFYDASLGTFFGRGNLTLHFLLGLKTA
 ADDDLVADLVVNILKVCDDLNNKYFKEVTFSPIPRAKSTWLNINIKLLNKIYEAQPEISRAFQTRFPIPLP
 RLLAMVMVTTVPLVCNKSMFTQALNLDSTSVRHTALSLISVILKRALKTVDHCLNKEVWQESGVYAVMM
 EEFVQLFREALSILPDLNVTVVWVWQSLKKQETKQDDKKGQKRSQDPPAACDAHQCDAAETILLKAVLLQ
 VICLYQKVVPHVMQYNFDFSKLLKGVISEQGLREEVPPILQHMLKVALELPASKFLWLKAQEGPDAEI
 IGGERSVFYLLMKMFVTSKSLQKSLTKLLIMKILRDTGVFEHTWKELELWLEHLENTMEEDKETVIQFL
 ERILLTLVANPYSYTDKASDFVQEAASMLQATMTKQEAADMSIPI SHIDDVLDMDVLEGESEGLDEEIGF
 TLTSEDMILLTFPFSAVVPAALEARNKLLLTGTGNEAAENVVTYLTAVLTDLLHTQRDPLALCLLLQAYDKL
 EPPCLVPCQQLSRFNRYSLWIPEQAREAWLLQAQGSPPALPLASSFTALLQAAYESQALRDEHIQV
 QLQATMPHLSMQVLLAAKQVLLYLRSTVENFGQLGRSVGPPLQLFLDLLRRLVVHCEQLDAQNQORCE
 AARAEADFLDMESVASLELANDQTLLEEVVAILRHPTLEGWFLALEQQALPPHTLSPVLVKLLATHFSA
 GVLQLLAASAPILQNIQQLGLLARYSEAITQSVLKEQNRRAQATSPPKTPPQLEALQELHPYMEGAQL
 REVTLALLSLPETHLVTQPTKSPGKERHNLGKTLVQLTCSPODQLQSGELLWSSEYVRGLGALLPT
 LAVDELDTVLLHTLQRDPVLAAPVADLLDYCLARRTQAALIAALLLQESCTHLLWFEWCLQAGPGLG
 LQGDLDLDFLPLIHVYLQCRTRSHFTRPAGVSSAVIPVLRKTLWRQLQSRLLSTDSPPASGLYQEIQAQLV
 PFARAKDL SVLMDRLPSLLHTPSSHKRWIVADSI SAALGSAEELCAWRRTLLESCVYKWLIVSFGGQQD
 DDNTQVQEKEMLLRLNALLHALNEVDPGDWQKFVKKGLKFYQDHTFLKMLLTAVQLLYSPESSVTRKLI
 QLPVVYVMLMQHSLFLPTLLTSDGEESPDQVKEALVDLMLTVVEMCPSVCESSHFVLLGAYGATLSVL
 DQKILLLLRAVEQNKLSLINFVLLWGPAAVEHHTCRSLGRSLWQQPSVGDILRLLDRDRMMQITLHFP
 QNRLLPPEDTQELIFKDKSRVDLDGLYDPCFLLQLFSELTRPEFVVDCKRFLDSNALGLTVTALSSYDP
 QMRAIAYHVLAAYYSHLEGARFQEQSLLYLLDVVRNGIRTQDMRLTFTLALFIAKAALQILKPEEHMYL
 KVSNFLLSHEYLNMDKVPGFYQFFYSSDFEQTEQKWVFGVLRQGIQYELCARRGIFHIIILSFFHS
 PLCDEAAQNWILEILQNAQVARSAYEIIIRDYSLLTWILHILESKFLETPLLSNVI SLLHTLWVTNLGDK
 AVEWESQRLCQPSQEPAKRLALHLVNEFLYVLIVLMKHLRPTLAPVQLTNFFGTLDVLRVYRATVIQAF
 RDMNRFVNETVLSKDVLLVLLHKWSLIERDLKQEDLRAAIEKAQARELMKMLKDKNKPMPARAKGPR
 GRKRRPGEAEEMADPELMASLTLETCKGLLRSILTYWRPVIPGPDPTQEPVDSASPESDAPGVYAAASLA
 VSWVLRSAEHPLSRAEAAGLIGWLKSHILPHPVVADLLKDSAVRSSFRLYSRLCGAEGLAGPVQVEVA
 CLFNTVMLQLVAAQGRAGSPFHPAMEALSSSLSEKDEATQASAAFLVSLYIKDIWLGAQRPDPTLLTHVR
 MVCEAADDAPSSSEEEIIVLCKDAASAASDA

TRTRPLE - GFP Tag - V

Restriction Sites: Sgfl-MluI

Cloning Scheme:

Cloning sites used for ORF Shutting:


Plasmid Map:

ACCN: NM_014825

ORF Size: 6813 bp

OTI Disclaimer: The molecular sequence of this clone aligns with the gene accession number as a point of reference only. However, individual transcript sequences of the same gene can differ through naturally occurring variations (e.g. polymorphisms), each with its own valid existence. This clone is substantially in agreement with the reference, but a complete review of all prevailing variants is recommended prior to use. [More info](#)

OTI Annotation: This clone was engineered to express the complete ORF with an expression tag. Expression varies depending on the nature of the gene.

Components:	The ORF clone is ion-exchange column purified and shipped in a 2D barcoded Matrix tube containing 10ug of transfection-ready, dried plasmid DNA (reconstitute with 100 ul of water).
Reconstitution Method:	<ol style="list-style-type: none">1. Centrifuge at 5,000xg for 5min.2. Carefully open the tube and add 100ul of sterile water to dissolve the DNA.3. Close the tube and incubate for 10 minutes at room temperature.4. Briefly vortex the tube and then do a quick spin (less than 5000xg) to concentrate the liquid at the bottom.5. Store the suspended plasmid at -20°C. The DNA is stable for at least one year from date of shipping when stored at -20°C.
RefSeq:	<u>NM_014825.3</u>
RefSeq Size:	10808 bp
RefSeq ORF:	6816 bp
Locus ID:	9875
UniProt ID:	<u>O60287</u>
Cytogenetics:	21q22.11