

Product datasheet for **RG226478**

CACNA1C (NM_001129827) Human Tagged ORF Clone

Product data:

Product Type:	Expression Plasmids
Product Name:	CACNA1C (NM_001129827) Human Tagged ORF Clone
Tag:	TurboGFP
Symbol:	CACNA1C
Synonyms:	CACH2; CACN2; CACNL1A1; CaV1.2; CCHL1A1; LQT8; TS; TS. LQT8
Mammalian Cell Selection:	Neomycin
Vector:	pCMV6-AC-GFP (PS100010)
E. coli Selection:	Ampicillin (100 ug/mL)
ORF Nucleotide Sequence:	>RG226478 representing NM_001129827 Red=Cloning site Blue=ORF Green=Tags(s)

TTTTGTAATACGACTCACTATAGGGCGGCCGGAATTCGTCGACTGGATCCGGTACCGAGGAGATCTGCC
GCC**CGATCGCC**

ATGGTCAATGAGAATACGAGGATGTACATTCCAGAGGAAAACCACCAAGTTCCAACATGGGAGCCAC
GCCCGCCCATGCCAACATGAATGCCAATGCGGCAGCGGGGCTGGCCCTGAGCACATCCCCACCCCGG
GGCTGCCCTGTCGTGGCAGGCGGCCATCGACGCAGCCCGCAGGCTAAGCTGATGGGCAGCGCTGGCAAT
GCGACCATCTCCACAGTCAGCTCCACGCAGCGGAAGCGGCAGCAATATGGGAAACCAAGAAGCAGGGCA
GCACCACGGCCACACGCCCGCCCGAGCCCTGCTGCTGCTGACCCTGAAGAACCCTCCGGAGGGCCTG
CATCAGCATTGTCGAATGGAAACCAATTTGAAATAATTATTTACTGACTATTTTTGCCAATTGTGTGGCC
TTAGCGATCTATATCCCTTTCCAGAAGATGATCCAACGCCACCAATCCAACCTGGAACGAGTGGAAAT
ATCTCTTTCTCATAATTTTTACGGTGGAAGCGTTTTTAAAAGTAATCGCCTATGGACTCCTCTTTACCC
CAATGCCACCTCCGCAACGGCTGGAACCTACTAGATTTATAATTGTGGTTGTGGGGCTTTTTAGTGCA
ATTTTAGAACAAGCAACCAAGCAGATGGGGCAAACGCTCTCGGAGGGAAAGGGCCGGATTTGATGTGA
AGGCGTGAGGGCCTCCGCGTGTGCGCCCTGCGGCTGGTGTCCGGAGTCCCAAGTCCAGGTGGT
CCTGAATTCATCATCAAGGCCATGGTCCCCCTGCTGCACATCGCCCTGCTTGTGCTGTTGTGCATCATC
ATCTACGCCATCATCGGCTTGGAGCTCTCATGGGGAAGATGCACAAGACCTGTACAACAGGAGGGCA
TAGCAGATGTTCCAGCAGAAGATGACCCTTCCCCTTGTGCGCTGGAAACGGGCCACGGCCGCGCAGTGCCA
GAACGGCACGGTGTGCAAGCCCGCTGGGATGGTCCCAAGCACGGCATCACCAACTTTGACAACCTTTGCC
TTCGCCATGCTCACGGTGTCCAGTGCATCACCATGGAGGGCTGGACGGACGTGCTGACTGGGTCAATG
ATGCCGTAGGAAGGGACTGGCCCTGGATCTATTTTGTACTACTAATCATCATAGGGTCATTTTTGTACT
TAACTTGGTTCTCGGTGTGCTTAGCGGAGATTTTCAAAGAGAGGGAGAAGGCCAAGGCCCGGGGAGAT
TTCCAGAAGCTGCGGGAGAAGCAGCAGCTAGAAGAGGATCTCAAAGGCTACCTGGATTGGATCACTCAGG
CCGAAGACATCGATCCTGAGAATGAGGACGAAGGCATGGATGAGGAGAAGCCCCGAAACATGAGCATGCC
CACCAGTGAGACCGAGTCCGTCAACACCGAAAACGTGGCTGGAGGTGACATCGAGGGAGAAAACCTCGGG



[View online »](#)

GCCAGGCTGGCCACCGGATCTCCAAGTCAAAGTTCAGCCGCTACTGGCGCCGGTGAATCGGTTCTGCA
 GAAGGAAGTGCCGCGCCGAGTCAAGTCTAATGTCTTCTACTGGCTGGTGATTTTCTGGTGTCTCTCAA
 CACGCTCACCATTTGCCTCTGAGCACTACAACCAGCCAACTGGCTCACAGAAGTCCAAGACACGGCAAAC
 AAGGCCCTGCTGGCCCTGTTACGGCAGAGATGCTCCTGAAGATGTACAGCCTGGGCTGCAGGCCACT
 TCGTGTCCCTCTCAACCGCTTTGACTGCTTCGTGTGTGGCGGCATCCTGGAGACCATCCTGGTGA
 ACCAAGATCATGTCCCCACTGGCATCTCCGTGCTCAGATGCGTCCGGCTGTGAGGATTTTCAAGATC
 ACGAGGTACTGGAACCTTTGAGCAACCTGGTGGCATCCTTGTGAACCTGTGCGCTCCATCGCCTCCC
 TGCTCCTTCTCCTTCTCCTTTCATCATCTTCTCCCTCCTGGGGATGCAGCTCTTTGGAGAAAGTT
 CAACTTTGATGAGATGCAGACCCGGAGGAGCACATTTCGATAAATTCCCCAGTCCCTCCTACTGTGTTT
 CAGATCCTGACCGGGGAGGACTGGAATTCGGTGTATGATGAGGATCATGGCTTATGGCGGCCCTCTT
 TTCCAGGGATGTTAGTCTGTATTTACTTTCATCATCCTCTTTCATCTGTGAAAATATATCCTACTGAATG
 GTTCTTGGCCATTGCTGTGGACAACCTGGCTGATGCTGAGAGCCTCACATCTGCCAAAAGGAGGAGGAA
 GAGGAGAAGGAGAGAAAGAAGCTGGCCAGGACTGCCAGCCAGAGAAGAAACAAGAGTTGGTGGAGAAGC
 CGGCAGTGGGGAAATCCAAGGAGGAGAAGATTGAGCTGAAATCCATCACGGCTGACGGAGAGTCTCCACC
 CGCCACCAAGATCAACATGGATGACCTCCAGCCAAATGAAAATGAGGATAAGAGCCCTACCCAAACCA
 GAAACTACAGGAGAAGAGGATGAGGAGGAGCCAGAGATGCTGTGGCCCTCGCCACAGCACTCTCTG
 AGCTTACCTTAAGGAAAAGGCAGTGCCATGCCAGAAGCCAGCGGTTTTTCATCTTACGCTCTAACAA
 CAGGTTTCGCCTCCAGTGCCACCGCATTGTCAATGACACGATCTTACCACCTGATCCTTCTTTCATT
 CTGCTCAGCAGCATTTCCCTGGCTGCTGAGGACCCGGTCCAGCACACCTCCTCAGGAACCATATTTCTGT
 TTTATTTTGATATTGTTTTTACCACATTTTACCATTGAAATGCTCTGAAGATCCTAGGCAATGCAGA
 CTATGTCTTCACTAGTATCTTTACATTAGAAAATATCCTTAAGATGACTGCTTATGGGGCTTTCTTGAC
 AAGGGTCTTTCTGCCGGAACACTTCAACATCCTGGACCTGCTGGTGGTCCAGCGTGTCCCTCATCTCCT
 TTGGCATCCAGTCCAGTCAATCAATGTCTGAAGATCTTGGAGTCTGCGAGTACTCAGGCCCTGAG
 GGCCATCAACAGGGCCAAGGGGCTAAAGCATGTGGTTCAGTGTGTGTTTTGTCGCCATCCGGACCATCGGG
 AACATCGTGATTGTACCACCCTGCTGCAGTTCATGTTTGCCTGCATCGGGTCCAGCTCTTCAAGGAA
 AGCTGTACACCTGTTTACAGCAGTTCGAAGCAGACAGAGCGGAATGCAAGGGCAACTACATCACGTACAA
 AGACGGGGAGGTTGACCACCCCATCATCAACCCCGCAGCTGGGAGAACAGCAAGTTTACTTTGACAAAT
 GTTCTGGCAGCCATGATGGCCCTCTTACCCTCTCCACCTTGAAGGGTGGCCAGAGCTGCTGTACCCT
 CCATCGACTCCCACACGGAAGACAAGGGCCCATCTACAACCTACCGTGTGGAGATCTCCATCTTCTTTCAT
 CATCTACATCATCATCATCGCTTCTTTCATGATGAACATCTTCTGGGCTTCGTATCGTACCTTTTCAG
 GAGCAGGGGAGCAGGAGTACAAGAACTGTGAGCTGGACAAGAACCAGCGACAGTGGTGAATACGCC
 TCAAGGCCCGGCCCTGCGGAGGTACATCCCAAGAACCAGCACCAGTACAAGGTGGTACGTGGTCAA
 CTCACCTACTTCGAGTACCTGATGTTCTGCTCCTCATCCTGCTCAACACCATCTGCCTGGCCATGCAGCAC
 TACGGCCAGAGCTGCCTGTTCAAATCGCCATGAACATCCTCAACATGCTCTTACTGGCCTCTTACCCT
 TGGAGATGATCCTGAAGCTCATTGCCTTCAAACCAAGGGTACTTTAGTGATCCCTGGAATGTTTTTGA
 CTTCTCATCGTAATTGGCAGCATAATTGACGTATTCTCAGTGAGACTAATCACTATTTCTGTGATGCA
 TGAATACATTTGACGCCTTGATTGTTGGGTAGCATTGTTGATATAGCAATCACCGAGGTAACCCAG
 CTGAACATACCAATGCTCTCCCTCTATGAACGCAGAGGAAAACCTCCGCATCCATCACCTTCTTCCG
 CCTGTTCCGGGTGATGCGTCTGGTGAAGCTGCTGAGCCGTGGGGAGGGCATCCGGACGCTGCTGTGGACC
 TTCATCAAGTCTTCCAGGCCCTGCCCTATGTGGCCCTCCTGATCGTGATGCTGTTCTTTCATCTACGCGG
 TGATCGGGATGCAGGTGTTTGGGAAAATTGCCCTGAATGATACCACAGAGATCAACCGGAACAACAACCT
 TCAGACCTTCCCCAGGCCGTGCTCCTCTTTCAGGTGTGCCACCGGGGAGGCCTGGCAGGACATCATG
 CTGGCCTGCATGCCAGGCAAGAAGTGTGCCCCAGAGTCCGAGCCAGCAACAGCAGGAGGTGAAACAC
 CCTGTGGTAGCAGCTTTGCTGTCTTACTTTCATCAGCTTCTACATGCTCTGTGCCTTCTGATCATCAA
 CCTTTTGTAGTGTGATCATGGACAACCTTACTACCTGACAAGGGACTGGTCCATCCTTGGTCCCCAC
 CACCTGGATGAGTTTAAAGAATCTGGCAGAGTATGACCCTGAAGCCAAGGGTCGATCAAACACCTGG
 ATGTGGTGACCTCCTCCGGCGGATTACGCCGCACTAGGTTTTGGGAAGCTGTGCCCTCACCGCGTGGC
 TTGCAAACGCCTGGTCTCCATGAACATGCTCTGAACAGCGACGGGACAGTCAATGTTCAATGCCACCCTG
 TTTGCCCTGGTACGACGGCCCTGAGGATCAAAACAGAAGGGAACCTAGAACAAGCCAATGAGGAGCTGC
 GGGCGATCATCAAGAAGATCTGGAAGCGGACCAGCATGAAGCTGCTGGACCAGGTGGTGGCCCTGCAGG
 TGATGATGAGGTACCGTTGGCAAGTCTACGCCAGTTCCTGATCCAGGAGTACTTCCGGAAGTTCAAG
 AAGCGCAAAGAGCAGGGCCTTGTGGCAAGCCCTCCAGAGGAACCGCGTGTCTCTGCAGGCTGGCTTGC

GCACACTGCATGACATCGGGCCTGAGATCCGACGGGCCATCTCTGGAGATCTCACCGCTGAGGAGGAGCT
GGACAAGGCCATGAAGGAGGCTGTGTCCGCTGCTTCTGAAGATGACATCTTCAGGAGGGCCGGTGGCCTG
TTCGGCAACCACGTCAGCTACTACCAAAGCGACGGCCGGAGCGCCTTCCCCCAGACCTTCACCACTCAGC
GCCCCGTGCACATCAACAAGCGGGCAGCAGCCAGGGCGACACTGAGTCGCCATCCCACGAGAAGCTGGT
GGACTCCACCTTACCCCCGAGCAGCTACTCGTCCACCGGCTCCAACGCCAACATCAACAACGCCAACAC
ACCGCCCTGGGTGCCTCCCTCGCCCCGCCGGTACCCACGACCGGTGAGCACTGTGGAGGGCCACGGGC
CCCCCTTGTCCCCTGCCATCCGGGTGCAGGAGGTGGCGTGAAGCTCAGCTCCAACAGGTGCCACTCCCG
GGAGAGCCAGGCAGCCATGGCGGGTCAGGAGGAGACGTCTCAGGATGAGACCTATGAAGTGAAGATGAAC
CATGACACGGAGGCTGCAGTGAGCCCAGCCTGCTCTCCACAGAGATGCTCTCCTACCAGGATGACGAAA
ATCGGCAACTGACGCTCCCAGAGGAGGACAAGAGGGACATCCGGCAATCTCCGAAGAGGGGTTTCTCCG
CTCTGCCTCACTAGGTGGAAGGGCCTCCTTCCACCTGGAATGTCTGAAGCGACAGAAGGACCGAGGGGA
GACATCTCTCAGAAGACAGTCTGCCCTTGCATCTGGTTCATCATCAGGCATTGGCAGTGGCAGGCCTGA
GCCCCCTCCTCCAGAGAAGCCATCCCCGCTCATTCCCTAGGCCTTTTGCACCCACCAGCCACACC
TGGCAGCCGAGGCTGGCCCCACAGCCCGTCCCCACCTGCGGCTTGAGGGGGTCGAGTCCAGTGAGAAA
CTCAACAGCAGCTTCCCATCCACTCGGGCTCCTGGGCTGAGACCACCCCGGTGGCGGGGCAGCA
GCGCCGCCGGAGAGTCCGGCCGCTCTCCCTCATGGTGCACAGCCAGGCTGGGGCCCCAGGGAGGCAGTT
CCACGGCAGTGCCAGCAGCCTGGTGAAGCGGTCTTGATTTAGAAAGGACTGGGGCAGTTTGCTCAAGAT
CCCAAGTTCATCGAGGTACCACCCAGGAGCTGGCCGACGCTGCGACATGACCATAGAGGAGATGGAGA
GCGCGGCCGACAACATCCTCAGCGGGGGCGCCCCACAGAGCCCCAATGGCGCCCTTTACCTTTGTGAA
CTGCAGGGACGCGGGGCAGGACCGAGCCGGGGCGAAGAGGACGCGGGCTGTGTGCGCGCGGGGTGGA
CCGAGTGAGGAGGAGCTCCAGGACAGCAGGGTCTACGTACGACGCCTG

ACGCGTACGCGGCCGCTCGAG - GFP Tag - GTTTAA

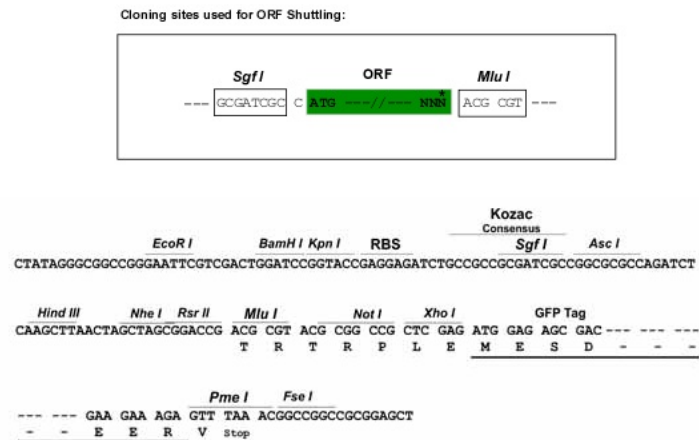
Protein Sequence: >RG226478 representing NM_001129827
 Red=Cloning site Green=Tags(s)

```
MV NENT RMYIPEEN HQGSNYGSPRPAHANMNANAAAGL APEHIPTPGAALSWQAAIDAARQAKLMGSAGN
ATISTV SSTQRKRQOY GPKPKQGSTTATRPPRALLCLTLKNPIRRACISIVEWKPF EIIILLTIFANCVA
LAIYIPFPEDDSNATNSNLERVEYLFLLIIFTVEAFLKVIAYGLLFHPNAYLRNGWNLLDFIIVVGLFSA
ILEQATKADGANALGGKAGFDVKALRAFRVLRPLRLVSGVPSLQVVLNSIIKAMVPLLHIALLVLFVII
IYAIIGLELFMGKMHKTCYNQEGIADVPAEDDPSPCALETGHRQCQNGTVCKPGWDGPKHGITNFDNFA
FAMLT V FQCITMEGWTDVLYWVND AVGRDWPWIYFVTLIIIGSFFVLNLVLGVLSGEFSKEREKAKARGD
FQKLR EKQQL EEDLKG YLDWITQAEDIDPENED EGMDEEKPRNMSMPTSETESVNTENVAGGDIEGENCEG
ARLAHRISKSKFSRYWRRWNRFCRRKCAAVKSNVFWLVI FLVFLNLT IASEHYNQPNWLTEVQDTAN
KALLALFTAEMLLKMYSLGLQAYFVSLFNRFDCFV VCGGILETILVETKIMSPLGISVLRVLRLLRIFKI
TRYWNSL SNLVA SLLNSVRSIASLLLLLFLFIIIFSL LGMQLFGGKFNDEMQRTRSTFDNFPQSLLTVF
QILTGEDWNSVMYD GIMAYGGPSFPGMLVCIYFIIILFICGNYILLNVFLAIAVDNLADAESL TSAQKEE
EEKERKKLARTASPEKKQELVEKPAVGESKEEKIELKSITADGESPPATKINMDDLQPNENEDKSPYPNP
ETTGEDEEEPEMPVGRPRPLSELHLKEKAVMPPEASAFFIFSSNNRFR LQCHRIVNDTIFTNLILFFI
LLSSISLAAEDPVQHTSFRNHILFYFDIVFTTIFTIEIALKILGNADYVFTSIFTLEIILKMTAYGAFLH
KGSFCRNYFNILDLLVVSLSIFSGIQSSAINVVKILRVLRLVLRPLRAINRAKGLKHVVQCVFAIRTIG
NIVIVTTLQFMFACIGVQLFKGKLYTCS DSSKQTEAECKGN YITYKDG EVDHPIIQPRSWENSKFDFDN
VLAAMMALFTVSTFE GWPELLYRSIDSHTE DKGPIYNYRVEISIFFIIYIIIIAFFMMNIFVGFVIVTFQ
EQGEQEYKNCELDKNQRQCVEYALKARPL RRYIPKNQH QYKVVYVYVNSTYFEYLMFVLILLNTICLAMQH
YGQSCLFKIAMNILNMLFTGLFTVEMILKLI AFKPKGYFSDPWNVDFLIVIGSII DVILSETNH YFCDA
WNTFDALIVVGSIVDIAITEVNP AEHTQCSPSMNAEENSRI SITFFRLFRVMRLVKLLSRGEGIRTLWT
FIKSFQALPYVALLIVMLFFIYAVIGMQVFGKIALNDTTEINRNNNFQTFPQAVLLLFRCATGEAWQDIM
LACMPGKKCAPESEPSNSTEGETPCGSSFAVFYFISFYMLCAFLIINL FVAVIMDNFDYLRDWSILGPH
HLDEFKRIWA EYDPEAKGRIKHLDVVTLLRRIQPPLGFGKLCPHRVACKRLVSMNPLNSDGTVMFNATL
FALVRTALRIKTEGNLEQANEELRAI IKKIWKRTSMKLLDQVVPV PAGDDEVTVGKFYATFLIQEYFRKFK
KRKEQGLVGKPSQRNALSLQAGLRTLHDIGPEIRRAISGDLTAE EELDKAMKEAVSAASEDDIFRRAGGL
FGNHVSYYSQDGRSAFPQTFTTQRPLHINKAGSSQGDTE SPSHEKLV DSTFTPSSYSSTGSNANINNANN
TALGRLPRPAGYPSTVSTVEGHGPPLSPAIRVQEV AWKLSNRCHSRESQAAMAGQEETSQDETYEVKMN
HDTEACSEPSLLSTEMLSYQDDENRQLTLPEEDKRD IRQSPKRGFLRSASLGRRAFHL ECLKRQKDRGG
DISQKTVLPLHLVHHQALAVAGLSPLLQRSHSPASFPRPFATPPATPGSRGWPPQVPVTLRLEGVESSEK
LNSSFPSIHC GSWAETTPGGGSSAARRVRPVSLMVPSQAGAPGRQFHGSASSLVEAVL ISEGLGQFAQD
PKFIEVTTQELADACDMTIEEMESAADN ILSGGAPQSPNGALLPFVNCRDAGQDRAGGEEDAGCVRARGR
PSEEEELQDSRVYVSSL
```

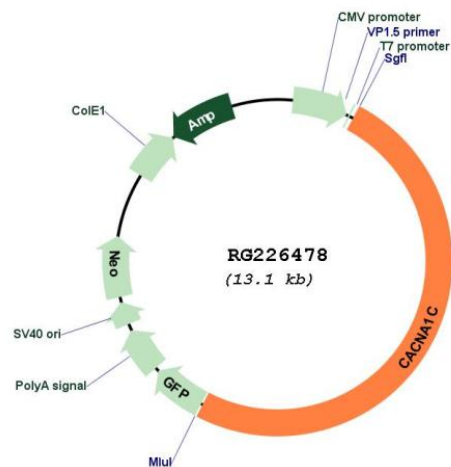
TRTRPLE - GFP Tag - V

Restriction Sites: SgfI-MluI

Cloning Scheme:



Plasmid Map:



ACCN: NM_001129827

ORF Size: 6558 bp

OTI Disclaimer: The molecular sequence of this clone aligns with the gene accession number as a point of reference only. However, individual transcript sequences of the same gene can differ through naturally occurring variations (e.g. polymorphisms), each with its own valid existence. This clone is substantially in agreement with the reference, but a complete review of all prevailing variants is recommended prior to use. [More info](#)

OTI Annotation: This clone was engineered to express the complete ORF with an expression tag. Expression varies depending on the nature of the gene.

Components:	The ORF clone is ion-exchange column purified and shipped in a 2D barcoded Matrix tube containing 10ug of transfection-ready, dried plasmid DNA (reconstitute with 100 ul of water).
Reconstitution Method:	<ol style="list-style-type: none">1. Centrifuge at 5,000xg for 5min.2. Carefully open the tube and add 100ul of sterile water to dissolve the DNA.3. Close the tube and incubate for 10 minutes at room temperature.4. Briefly vortex the tube and then do a quick spin (less than 5000xg) to concentrate the liquid at the bottom.5. Store the suspended plasmid at -20°C. The DNA is stable for at least one year from date of shipping when stored at -20°C.
RefSeq:	NM_001129827.2
RefSeq Size:	13624 bp
RefSeq ORF:	6561 bp
Locus ID:	775
UniProt ID:	Q13936
Cytogenetics:	12p13.33
Protein Families:	Druggable Genome, Ion Channels: Calcium, Transmembrane
Protein Pathways:	Alzheimer's disease, Arrhythmogenic right ventricular cardiomyopathy (ARVC), Calcium signaling pathway, Cardiac muscle contraction, Dilated cardiomyopathy, GnRH signaling pathway, Hypertrophic cardiomyopathy (HCM), Long-term potentiation, MAPK signaling pathway, Type II diabetes mellitus, Vascular smooth muscle contraction
Gene Summary:	This gene encodes an alpha-1 subunit of a voltage-dependent calcium channel. Calcium channels mediate the influx of calcium ions into the cell upon membrane polarization. The alpha-1 subunit consists of 24 transmembrane segments and forms the pore through which ions pass into the cell. The calcium channel consists of a complex of alpha-1, alpha-2/delta, beta, and gamma subunits in a 1:1:1:1 ratio. There are multiple isoforms of each of these proteins, either encoded by different genes or the result of alternative splicing of transcripts. The protein encoded by this gene binds to and is inhibited by dihydropyridine. Alternative splicing results in many transcript variants encoding different proteins. Some of the predicted proteins may not produce functional ion channel subunits. [provided by RefSeq, Oct 2012]