

Product datasheet for **RG226477**

CACNA1C (NM_001129829) Human Tagged ORF Clone

Product data:

Product Type:	Expression Plasmids
Product Name:	CACNA1C (NM_001129829) Human Tagged ORF Clone
Tag:	TurboGFP
Symbol:	CACNA1C
Synonyms:	CACH2; CACN2; CACNL1A1; CaV1.2; CCHL1A1; LQT8; TS; TS. LQT8
Mammalian Cell Selection:	Neomycin
Vector:	pCMV6-AC-GFP (PS100010)
E. coli Selection:	Ampicillin (100 ug/mL)
ORF Nucleotide Sequence:	>RG226477 representing NM_001129829 Red=Cloning site Blue=ORF Green=Tags(s)

TTTTGTAATACGACTCACTATAGGGCGGCCGGAATTCGTCGACTGGATCCGGTACCGAGGAGATCTGCC
GCC**CGATCGCC**

ATGGTCAATGAGAATACGAGGATGTACATTCCAGAGGAAAACCACCAAGTTCCAACATGGGAGCCAC
GCCCCGCCATGCCAACATGAATGCCAATGCGGCAGCGGGGCTGGCCCCGAGCAGATCCCCACCCCGG
GGCTGCCCTGTCGTGGCAGGCGGCCATCGACGCAGCCCGCAGGCTAAGCTGATGGCAGCGCTGGCAAT
GCGACCATCTCCACAGTCAGCTCCACGCAGCGGAAGCGGCAGCAATATGGGAAACCAAGAAGCAGGGCA
GCACCACGGCCACACGCCCGCCCGAGCCCTGCTGCTGCTGACCTGAAGAACCCTCCGAGGGCCTG
CATCAGCATTGTCGAATGGAAACCAATTTGAAATAATTATTTACTGACTATTTTTGCCAATTGTGTGGCC
TTAGCGATCTATATCCCTTTCCAGAAGATGATCCAACGCCACCAATCCAACCTGGAACGAGTGGAAAT
ATCTCTTTCTCATAATTTTTACGGTGGAAGCGTTTTTAAAAGTAATCGCCTATGGACTCCTCTTTACCC
CAATGCCTACCTCCGCAACGGCTGGAACCTACTAGATTTATAATTGTGGTTGTGGGGCTTTTTAGTGCA
ATTTTAGAACAAGCAACCAAGCAGATGGGGCAAACGCTCTCGGAGGGAAGGGGCCGATTTGATGTGA
AGGCGTGAGGGCCTCCGCGTGTGCGCCCCGCGGCTGGTGTCCGGAGTCCCAAGTCTCCAGGTGGT
CCTGAATTCATCATCAAGGCCATGGTCCCCCTGCTGCACATCGCCCTGCTTGTGCTGTTGTGCATCATC
ATCTACGCCATCATCGGCTTGGAGCTCTCATGGGGAAGATGCACAAGACCTGTACAACCAGGAGGGCA
TAGCAGATGTTCCAGCAGAAGATGACCCTTCCCCTTGTGCGCTGGAAACGGGCCACGGCCGCGCAGTGCCA
GAACGGCACGGTGTGCAAGCCCGCTGGGATGGTCCCAAGCACGGCATACCAACTTTGACAACCTTTGCC
TTCGCCATGCTCACGGTGTCCAGTGCATACCATGGAGGGCTGGACGGACGTGCTGACTGGGTCAATG
ATGCCGTAGGAAGGGACTGGCCCTGGATCTATTTTGTACTACTAATCATCATAGGGTCATTTTTGTACT
TAACTTGGTTCTCGGTGTGCTTAGCGGAGAGTTTTCCAAAGAGAGGGAGAAGGCCAAGGCCCGGGGAGAT
TTCCAGAAGCTGCGGGAGAAGCAGCAGCTAGAAGAGGATCTCAAAGGCTACCTGGATTGGATCACTCAGG
CCGAAGACATCGATCCTGAGAATGAGGACGAAGGCATGGATGAGGAGAAGCCCCGAAACATGAGCATGCC
CACCAGTGAGACCGAGTCCGTCAACACCGAAAACGCTGGCTGGAGGTGACATCGAGGGAGAAAACCTCGGG



[View online >](#)

GCCAGGCTGGCCACCGGATCTCCAAGTCAAAGTTCAGCCGCTACTGGCGCCGGTGAATCGGTTCTGCA
GAAGGAAGTGCCGCGCCGAGTCAAGTCTAATGTCTTCTACTGGCTGGTATTTTCTGGTGTCTCTCAA
CACGCTCACCATTTGCCTCTGAGCACTACAACCAGCCAACTGGCTCACAGAAGTCCAAGACACGGCAAAC
AAGGCCCTGCTGGCCCTGTTACGGCAGAGATGCTCCTGAAGATGTACAGCCTGGGCTGCAGGCCCTACT
TCGTGTCCCTCTCAACCGCTTTGACTGCTTCGTGTGTGGCGGCATCCTGGAGACCATCCTGGTGGA
GACCAAGATCATGTCCCACTGGGCATCTCCGTGCTCAGATGCGTCCGGCTGCTGAGGATTTTCAAGATC
ACGAGGTACTGGAACCTTTGAGCAACCTGGTGGCATCCTTGTGAACCTGTGCGCTCCATCGCCCTCCC
TGCTCCTTCTCCTTCTCCTTTCATCATCTTCTCCCTCCTGGGATGCAGCTCTTGGAGGAAAGTT
CAACTTTGATGAGATGCAGACCCGGAGGAGCACATTGATAAATTCCCCAGTCCCTCCTACTGTGTTT
CAGATCCTGACCGGGGAGGACTGGAATTCGGTGTATGATGGGATCATGGCTTATGGCGGCCCTCTT
TTCCAGGGATGTTAGTCTGTATTTACTTTCATCATCCTCTTTCATCTGTGAAAATATATCCTACTGAATG
GTTCTTGGCCATTGCTGTGGACAACCTGGCTGTGCTGAGAGCCTCACATCTGCCAAAAGGAGGAGGAA
GAGGAGAAGGAGAGAAAGAAGCTGGCCAGGACTGCCAGCCAGAGAAGAAACAAGAGTTGGTGGAGAAGC
CGGCAGTGGGGAAATCCAAGGAGGAGAAGATTGAGCTGAAATCCATCACGGCTGACGGAGAGTCTCCACC
CGCCACCAAGATCAACATGGATGACCTCCAGCCCAATGAAAATGAGGATAAGAGCCCTACCCCAACCCA
GAAACTACAGGAGAAGAGGATGAGGAGGAGCCAGAGATGCTGTGGCCCTCGCCACGACCACTCTCTG
AGCTTACCTTAAGGAAAAGGCAGTGCCCATGCCAGAAGCCAGCGGTTTTTTCATCTTACGCTCTAACAA
CAGGTTTCGCCTCCAGTGCCACCGCATTGTCAATGACACGATCTTACCACCTGATCCTTCTTTCATT
CTGCTCAGCAGCATTTCCCTGGCTGCTGAGGACCCGGTCCAGCACACCTCCTTCCAGAACCATATTTCTGT
TTTATTTTGATATTGTTTTTACCACATTTTACCATTGAAATGCTCTGAAGATGACTGCTTATGGGGC
TTTCTTGACAAGGGTTCTTCTGCCGAACTACTTCAACATCCTGGACCTGCTGGTGGTCCAGCGTGTCC
CTCATCTCCTTTGGCATCCAGTCCAGTCAATCAATGCTGTGAAGATCTTGGAGTCTCGGACTACTCA
GGCCCTGAGGGCCATCAACAGGGCCAAGGGCTAAAGCATGTGGTTCAGTGTGTGTTTGTCCGCTCCG
GACCATCGGGAACATCGTGATTGTCACCACCCTGCTGCAGTTCATGTTTGCCTGCATCGGGTCCAGCTC
TTCAAGGGAAGCTGTACACCTGTTAGACAGTTCCAAGCAGACAGAGGGGAATGCAAGGGCAACTACA
TCACGTACAAAGACGGGAGGTTGACCACCCCATCATCCAACCCCGCAGCTGGGAGAACAGCAAGTTTGA
CTTTGACAATGTTCTGGCAGCCATGATGGCCCTTTCACCGTCTCCACCTTGAAGGGTGGCCAGAGCTG
CTGTACCCTCCATCGACTCCCACAGGAAGACAAGGGCCCATCTACAACCTACCGTGTGGAGATCTCCA
TCTTCTTTCATCATCTACATCATCATCATCGCTTCTTTCATGATGAACATCTTCTGGGCTTCGTCATCGT
CACCTTTCAGGAGCAGGGGAGCAGGAGTACAAGAACTGTGAGCTGGACAAGAACCAGCAGCAGTGCCTG
GAATACGCCCTCAAGGCCGGCCCTGCGGAGGTACATCCCAAGAACCAGCACCAGTACAAGTGTGGT
ACGTGGTCAACTCCACTACTTCGAGTACTGATGTTCTGCTCATCCTGCTCAACACCATCTGCCTGGC
CATGCAGCACTACGGCCAGAGCTGCCTGTTCAAAATCGCCATGAACATCCTCAACATGCTCTTCACTGGC
CTCTTACCGTGGAGATGATCCTGAAGCTCATTGCCTTCAAACCAAGCACTATTTCTGTGATGCATGGA
ATACATTTGACGCTTGATTGTTGTGGGTAGCATTGTTGATATAGCAATCACCGAGGTAAACCCAGCTGA
ACATACCAATGCTCTCCCTCTATGGGGCCCTCCTGTTCTCACCCCTCTTGTGTGCTAACTGCACCT
CCTGTTGGCGACGGGTTCCAGAACGCAGAGGAAAACCTCCCGCATCTCCATCACCTTCTCCGCTGTTCC
GGTCAATGCGTCTGGTGAAGCTGCTGAGCCGTGGGAGGGCATCCGGACGCTGCTGTGGACCTTCATCAA
GCTCTCCAGGCCCTGCCATATGTGGCCCTCCTGATCGTATGCTGTTCTTTCATCTACGCGGTGATCGGG
ATGCAGGTGTTTGGGAAAATTGCCCTGAATGATACCACAGAGATCAACCGGAACAACAACCTTTCAGACCT
TCCCCAGGCCGTGCTGCTCCTTTCAGGTGTGCCACCGGGAGGCTGGCAGGACATCATGCTGGCCTG
CATGCCAGGCAAGAAGTGTGCCAGAGTCCGAGCCAGCAACAGCAGCGAGGGTGAACACCCTGTGGT
AGCAGCTTTGCTGCTTCTACTTTCATCAGCTTCTACATGCTCTGTGCCTTCTGATCATCAACCTTTTG
TAGCTGTCATCATGGACAACCTTTGACTACCTGACAAGGGACTGGTCCATCCTTGGTCCCCACCACCTGGA
TGAGTTTTAAAAGAATCTGGGCAGAGTATGACCCTGAAGCCAAGGGTTCGATCAAACACCTGGATGTGGT
ACCCTCCTCCGGCGGATTACGCCCACTAGGTTTTGGGAAGCTGTGCCCTCACCGCTGGCTTGAACAC
GCCTGGTCTCCATGAACATGCCTCTGAACAGCGACGGGACAGTCAATGTTCAATGCCACCTGTTTGCCT
GGTCAGGACGGCCCTGAGGATCAAACAGAAGAGGGACCCAGCCATCAGAGGCCCAAGGGGCTGAG
GATCCTTTCCGCCCTGCAGGGAACCTAGAACAAGCCAATGAGGAGCTGCGGGCGATCATCAAGAAGATCT
GGAAGCGGACAGCATGAAGCTGCTGGACCAGGTGGTGGCCCTGCAGGTGATGATGAGGTACCGTTGG
CAAGTTTACGCCACGTTCTGATCCAGGAGTACTTCCGGAAGTTCAAGAAGCGCAAAGAGCAGGGCCTT
GTGGGCAAGCCCTCCAGAGGAACGCGTGTCTGTCAGGCTGGCTTGGCAGACTGCATGACATCGGGC

CTGAGATCCGACGGGCCATCTCTGGAGATCTCACCCTGAGGAGGAGCTGGACAAGGCCATGAAGGAGGC
TGTGTCCGCTGCTTCTGAAGATGACATCTTCAGGAGGGCCGGTGGCCTGTTTCGGCAACCACGTCAGCTAC
TACCAAAGCGACGGCCGGAGCGCCTTCCCCAGACCTTACCACCTCAGCGCCCGCTGCACATCAACAAGG
CGGGCAGCAGCCAGGGCGACACTGAGTCGCATCCCACGAGAAGCTGGTGGACTCCACCTTACCCCCGAG
CAGCTACTCGTCCACCGGCTCCAACGCCAACATCAACAACGCCAACACCCGCCCTGGGTCGCCTCCCT
CGCCCCGCCGGTACCCACGACGGTCAGCACTGTGGAGGGCCACGGGCCCCCTTGTCCCCTGCCATCC
GGGTGCAGGAGGTGGCGTGAAGCTCAGCTCCAACAGGTGCCACTCCCGGGAGAGCCAGGCAGCCATGGC
GGGTGCAGGAGGACGCTCAGGATGAGACCTATGAAGTGAAGTGAACCATGACACGGAGGCCTGCACT
GAGCCCAGCCTGCTCTCCACAGAGATGCTCTCTACCAGGATGACGAAAAATCGGCAACTGACGCTCCCAG
AGGAGGACAAGAGGGACATCCGGCAATCTCCGAAGAGGGGTTTCTCCGCTCTGCCTCACTAGGTCGAAG
GGCCTCTTCCACCTGGAATGTCTGAAGCGACAGAAGGACCGAGGGGGAGACATCTCAGAAGACAGTC
CTGCCCTTGCATCTGGTTCATCATCAGGCATTGGCAGTGGCAGGCCTGAGCCCCCTCTCCAGAGAAGCC
ATCCCCCTGCCTATTCCCTAGGCCTTTTGCCACCCACCAGCCACACCTGGCAGCCGAGGCTGGCCCC
ACAGCCCGTCCCCACCTGCGGCTTGGGGGGTCGAGTCCAGTGAGAACTCAACAGCAGCTTCCATCC
ATCCACTGCGGCTCCTGGGCTGAGACCACCCCGGTGGCGGGGCAGCAGCGCCCGGAGAGTCCGGC
CGGTCTCCCTCATGGTGCCAGCCAGGCTGGGGCCCCAGGGAGGCAGTCCACCGCAGTGCAGCAGCCT
GGTGAAGCGGTCTTGATTTTCAAGAGGACTGGGGCAGTTTGTCTAAGATCCCAAGTTCATCGAGGTCACC
ACCCAGGAGCTGGCCGACGCTGCGACATGACCATAGAGGAGATGGAGAGCGCGGCCGACAACTCCTCA
GCGGGGGCGCCCCACAGAGCCCCAATGGCGCCCTTTACCCTTTGTGAAGTGCAGGGACGCGGGGCAGGA
CCGAGCCGGGGCGAAGAGGACGCGGGCTGTGTGCGCGCGGGGTGACCGAGTGAGGAGGAGCTCCAG
GACAGCAGGGTCTACGTCAGCAGCCTG

ACGCGTACGCGGCCGCTCGAG - GFP Tag - GTTTAA

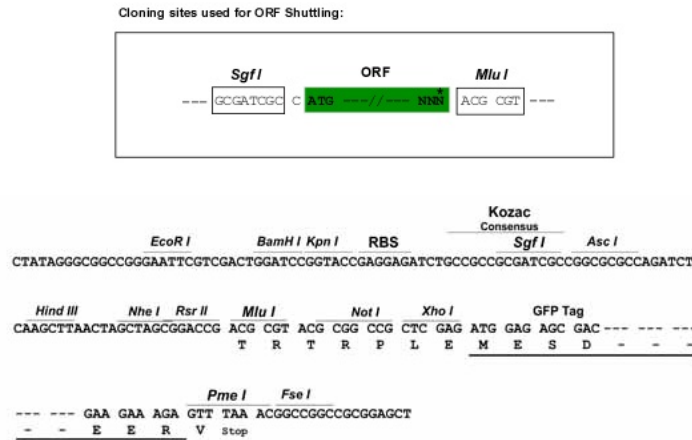
Protein Sequence: >RG226477 representing NM_001129829
 Red=Cloning site Green=Tags(s)

```
MVNTENTRMYIPEENHQGSNYGSPRPAHANMNANAAAGLAPEHIPTPGAALSWQAAIDAARQAKLMGSAGN
ATISTVSTQRKRQYQYKPKKQGSTTATRPPRALLCLTLKNPIRRACISIVEWKPFEEIILLTIFANCVA
LAIYIPFPEDDSNATNSNLERVEYLFLLIIFTVEAFLKVIAYGLLFHPNAYLRNGWNLDFIIVVGLFSA
ILEQATKADGANALGGKAGFDVKALRAFRVLRPLRLVSGVPSLQVVLNSIIKAMVPLLHIALLVLFVII
IYAIIGLELFMGKMHKTCYNQEGIADVPAEDDPSPCALETGHGRQCQNGTVCKPGWDGPKHGITNFDNFA
FAMLTVFQCITMEGWTDVLYWVNDVAVGRDWPWIYFVTLIIIGSFFVLNLVLGVLSEGFSSKEREKAKARGD
FQKLRKQQLLEEDLKGYLWDWITQAEDIDPENEDEGMDEEKPRNMSMPTSETESVNTENVAGGDIEGENCG
ARLAHRISKSKFSRYWRRWRNRCRRKCAAVKSNVFWLVI FLVFLNLT IASEHYNQPNWLTEVQDTAN
KALLALFTAEMLLKMYSGLQAYFVSLFNRFDCFVVCGGILETILVETKIMSPLGISVLRVLRLLRIFKI
TRYWNSLNLVALLNSVRSIASLLLLLFLFIIIFSLGMLQFGGKFNDEMQRTRSTFDNFPQSLLTVF
QILTGEDWNSVMYDGMAYGGPSFPGMLVCIYFIIILFICGNYILLNVFLAIAVDNLADAESLTSQKKEE
EEKERKKLARTASPEKKQELVEKPAVGESKEEKIELKSITADGESPPATKINMDDLQPNENEDKSPYPNP
ETTGEDEEEPEMPVGRPRPLSELHLKEKAVPMPEASAFFIFSSNNRFRQLQCHRIVNDTIFTNLILFFI
LLSSISLAAEDPVQHTSFRNHILFYFDIVFTTIFTIEIALKMTAYGAFLHKGSFCRNYFNILDLLVVSVS
LISFGIQSSAINVVKILRVLRLRPLRAINRAKGLKHHVQCVFVAIRTIGNIVIVITLLQFMFACIGVQL
FKGKLYTCSDDSKQTEAECKGNYITYKDGVDHPIIQPRSWENSKFDFDNVLAAMMALFTVSTFEGWPEL
LYRSIDSHTEKGPINYNRYVEISIFFIIYIIIIAFFMMNIFVGFVIVTFQEQGEQYKNCDELKDNQRQCV
EYALKARPLRRYIPKNQHQYKVVYVNSTYFEYLMFVILLNLTICLAMQHYGQSCLFKIAMNILNMLFTG
LFTVEMILKLI AFKPKHYFCDAWNTFDALIVVGSIVDIAITEVNP AEHTQCSPSMGPSCSHPPLAVLTAP
PVADGFQNAEENSRSITTFRFRVMRLVKLLSRGEGIRTLWTFIKSFQALPYVALLIVMLFFIYAVIG
MQVFGKIALNDTTEINRNNNFQTFPQAVLLLFRCATGEAWQDIMLACMPGKKCAPESEPSNSTEGETPCG
SSFAVFYFISFYMLCAFLIINL FVAVIMDNFDYLTRDWSILGPHHLDEFKRIWAEYDPEAKGRIKHLDV
TLLRRIQPPLGFGKLCPHRVACKRLVSMNPLNSDGTVMFNATL FALVRTALRIKTEEGSPSEAHQGAE
DPFRPAGNLEQANEELRAI IKKIWKRTSMKLLDQVPPAGDDEVTVGKFYATFLIQEYFRKFKRKEQGL
VGKPSQRNALSLQAGLRTLHDIGPEIRRAISGDLTAEELDKAMKEAVSAASEDDIFRRAGGLFGNHVSY
YQSDGRSAFPQTFTTQRPLHINKAGSSQGDTEPSHEKLV DSTFTPSSYSSTGSNANINNANNTALGRLP
RPAGYPTVSTVEGHGPPLSPAIRVQEVAVKLSNRCHSRESQAAMAGQEETSQDETYEVKMNHDTEACS
EPSLLSTEMLSYQDDENRQLTLPEEDKRDIRQSPKRGFLRSASLGRRASFHLECLKRQKDRGGDISQKTV
LPLHLVHHQALAVAGLSPLLQRSHSPASFRPFATPPATPGSRGWPPQPVPTRLRLEGVESSEKLNSSFPS
IHCGSWAETTPGGGSSAARRVRPVSMLMVPSQAGAPGRQFHGSASSLVEAVLISEGLGQFAQDPKFIETV
TQELADACDMTIEEMESAADNILLSGGAPQSPNGALLPFVNCRDAGQDRAGGEEDAGCVRARGRPSEELQ
DSRVVYVSSL
```

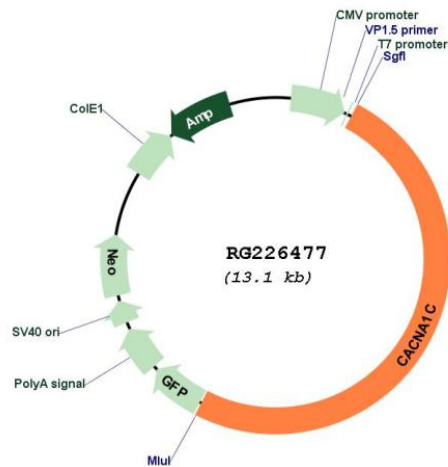
TRTRPLE - GFP Tag - V

Restriction Sites: Sgfl-MluI

Cloning Scheme:



Plasmid Map:



ACCN: NM_001129829

ORF Size: 6537 bp

OTI Disclaimer: The molecular sequence of this clone aligns with the gene accession number as a point of reference only. However, individual transcript sequences of the same gene can differ through naturally occurring variations (e.g. polymorphisms), each with its own valid existence. This clone is substantially in agreement with the reference, but a complete review of all prevailing variants is recommended prior to use. [More info](#)

OTI Annotation: This clone was engineered to express the complete ORF with an expression tag. Expression varies depending on the nature of the gene.

Components:	The ORF clone is ion-exchange column purified and shipped in a 2D barcoded Matrix tube containing 10ug of transfection-ready, dried plasmid DNA (reconstitute with 100 ul of water).
Reconstitution Method:	<ol style="list-style-type: none">1. Centrifuge at 5,000xg for 5min.2. Carefully open the tube and add 100ul of sterile water to dissolve the DNA.3. Close the tube and incubate for 10 minutes at room temperature.4. Briefly vortex the tube and then do a quick spin (less than 5000xg) to concentrate the liquid at the bottom.5. Store the suspended plasmid at -20°C. The DNA is stable for at least one year from date of shipping when stored at -20°C.
RefSeq:	<u>NM_001129829.1</u> , <u>NP_001123301.1</u>
RefSeq Size:	13603 bp
RefSeq ORF:	6540 bp
Locus ID:	775
UniProt ID:	<u>Q13936</u>
Cytogenetics:	12p13.33
Protein Families:	Druggable Genome, Ion Channels: Calcium, Transmembrane
Protein Pathways:	Alzheimer's disease, Arrhythmogenic right ventricular cardiomyopathy (ARVC), Calcium signaling pathway, Cardiac muscle contraction, Dilated cardiomyopathy, GnRH signaling pathway, Hypertrophic cardiomyopathy (HCM), Long-term potentiation, MAPK signaling pathway, Type II diabetes mellitus, Vascular smooth muscle contraction
Gene Summary:	This gene encodes an alpha-1 subunit of a voltage-dependent calcium channel. Calcium channels mediate the influx of calcium ions into the cell upon membrane polarization. The alpha-1 subunit consists of 24 transmembrane segments and forms the pore through which ions pass into the cell. The calcium channel consists of a complex of alpha-1, alpha-2/delta, beta, and gamma subunits in a 1:1:1:1 ratio. There are multiple isoforms of each of these proteins, either encoded by different genes or the result of alternative splicing of transcripts. The protein encoded by this gene binds to and is inhibited by dihydropyridine. Alternative splicing results in many transcript variants encoding different proteins. Some of the predicted proteins may not produce functional ion channel subunits. [provided by RefSeq, Oct 2012]