

Product datasheet for **RG226471**

CACNA1C (NM_001129835) Human Tagged ORF Clone

Product data:

Product Type:	Expression Plasmids
Product Name:	CACNA1C (NM_001129835) Human Tagged ORF Clone
Tag:	TurboGFP
Symbol:	CACNA1C
Synonyms:	CACH2; CACN2; CACNL1A1; CaV1.2; CCHL1A1; LQT8; TS; TS. LQT8
Mammalian Cell Selection:	Neomycin
Vector:	pCMV6-AC-GFP (PS100010)
E. coli Selection:	Ampicillin (100 ug/mL)
ORF Nucleotide Sequence:	>RG226471 representing NM_001129835 Red=Cloning site Blue=ORF Green=Tags(s)

TTTTGTAATACGACTCACTATAGGGCGGCCGGAATTCGTCGACTGGATCCGGTACCGAGGAGATCTGCC
GCC**CGATCGCC**

ATGGTCAATGAGAATACGAGGATGTACATTCCAGAGGAAAACCACCAAGTTCCAACATGGGAGCCCAC
GCCCCGCCATGCCAACATGAATGCCAATGCGGCAGCGGGGCTGGCCCCCTGAGCACATCCCCACCCCGGG
GGCTGCCCTGTCGTGGCAGGCGGCCATCGACGCAGCCCGCAGGCTAAGCTGATGGGCAGCGCTGGCAAT
GCGACCATCTCCACAGTCAGCTCCACGCAGCGGAAGCGGCAGCAATATGGGAAACCAAGAAGCAGGGCA
GCACCACGGCCACACGCCCGCCCGAGCCCTGCTGCTGCTGACCCTGAAGAACCCATCCGGAGGGCCTG
CATCAGCATTGTCGAATGGAAACCAATTTGAAATAATTATTTACTGACTATTTTTGCCAATTGTGTGGCC
TTAGCGATCTATATCCCTTTCCAGAAGATGATTTCAACGCCACCAATTTCAACCTGGAACGAGTGGAAAT
ATCTCTTTCTCATAATTTTTACGGTGAAGCGTTTTTAAAAGTAATCGCCTATGGACTCCTCTTTACCC
CAATGCCTACCTCCGCAACGGCTGGAACCTACTAGATTTATAATTGTGGTTGTGGGGCTTTTTAGTGCA
ATTTTAGAACAAGCAACCAAGCAGATGGGGCAAACGCTCTCGGAGGGAAAGGGCCGGATTTGATGTGA
AGGCGTGAGGGCCTTCCGCGTGTGCGCCCCCTGCGGCTGGTGTCCGGAGTCCCAAGTCTCCAGGTGGT
CCTGAATTCATCATCAAGGCCATGGTCCCCCTGCTGCACATCGCCCTGCTTGTGCTGTTGTGTCATCATC
ATCTACGCCATCATCGGCTTGGAGCTCTTCATGGGGAAGATGCACAAGACCTGTACAACCAGGAGGGCA
TAGCAGATGTTCCAGCAGAAGATGACCCTTCCCCTTGTGCGCTGGAAACGGGCCACGGGCGCAGTGCCA
GAACGGCACGGTGTGCAAGCCCGCTGGGATGGTCCCAAGCACGGCATCACCAACTTTGACAACCTTTGCC
TTCCGCATGCTCACGGTGTTCAGTGCATCACCATGGAGGGCTGGACGGACGTGCTGACTGGGTCAATG
ATGCCGTAGGAAGGGACTGGCCCTGGATCTATTTTGTACTACTAATCATCATAGGGTCATTTTTTGTACT
TAACTTGGTTCTCGGTGTGCTTAGCGGAGAGTTTTCCAAAGAGAGGGAGAAGGCCAAGGCCCGGGGAGAT
TTCCAGAAGCTGCGGGAGAAGCAGCAGCTAGAAGAGGATCTCAAAGGCTACCTGGATTGGATCACTCAGG
CCGAAGACATCGATCCTGAGAATGAGGACGAAGGCATGGATGAGGAGAAGCCCCGAAACATGAGCATGCC
CACCAGTGAGACCGAGTCCGTCAACACCGAAAACGTGGCTGGAGGTGACATCGAGGGAGAAAACCTGCGGG



[View online >](#)

GCCAGGCTGGCCACCGGATCTCCAAGTCAAAGTTCAGCCGCTACTGGCGCCGGTGAATCGGTTCTGCA
 GAAGGAAGTGCCGCGCCGAGTCAAGTCTAATGTCTTCTACTGGCTGGTATTTTCTGGTGTCTCTCAA
 CACGCTCACCATTTGCCTCTGAGCACTACAACCAGCCAACTGGCTCACAGAAGTCCAAGACACGGCAAAC
 AAGGCCCTGCTGGCCCTGTTACGGCAGAGATGCTCCTGAAGATGTACAGCCTGGGCTGCAGGCCACT
 TCGTGTCCCTCTCAACCGCTTTGACTGCTTCGTGTGTGGCGGCATCCTGGAGACCATCCTGGTGA
 GACCAAGATCATGTCCCACTGGGCATCTCCGTGCTCAGATGCGTCCGGCTGTGAGGATTTTCAAGAT
 ACGAGGTACTGGAACCTTTGAGCAACCTGGTGGCATCCTTGTGAACCTGTGCGCTCCATCGCCTCCC
 TGCTCCTTCTCCTTCTCCTTTCATCATCTTCTCCCTCCTGGGGATGCAGCTCTTGGAGGAAAGTT
 CAACTTTGATGAGATGCAGACCCGGAGGAGCACATTGATAAATTCCCCAGTCCCTCCTACTGTGTTT
 CAGATCCTGACCGGGGAGGACTGGAATTCGGTGTATGATGAGGATCATGGCTTATGGCGGCCCTCTT
 TTCCAGGGATGTTAGTCTGTATTTACTTTCATCATCCTCTTTCATCTGTGAAACTATATCCTACTGAATGT
 GTTCTTGGCCATTGCTGTGGACAACCTGGCTGATGCTGAGAGCCTCACATCTGCCAAAAGGAGGAGGAA
 GAGGAGAAGGAGAGAAAGAAGCTGGCCAGGACTGCCAGCCAGAGAAGAAACAAGAGTTGGTGGAGAAGC
 CGGCAGTGGGGAAATCCAAGGAGGAGAAGATTGAGCTGAAATCCATCACGGCTGACGGAGAGTCTCCACC
 CGCCACCAAGATCAACATGGATGACCTCCAGCCAAATGAAAATGAGGATAAGAGCCCTACCCAAACCA
 GAAACTACAGGAGAAGAGGATGAGGAGGAGCCAGAGATGCTGTGGCCCTCGCCACGACCACTCTCTG
 AGCTTACCTTAAGGAAAAGGCAGTGCCCATGCCAGAAGCCAGCGGTTTTTTCATCTTACGCTCTAACAA
 CAGGTTTCGCCTCCAGTGCCACCGCATTGTCAATGACACGATCTTACCACCTGATCCTTCTTTCATT
 CTGCTCAGCAGCATTTCCCTGGCTGCTGAGGACCCGGTCCAGCACACCTCCTCAGGAACCATATCCTAG
 GCAATGCAGACTATGCTTCACTAGTATCTTTACATTAGAAAATTATCCTTAAGATGACTGCTTATGGGGC
 TTTCTTGACAAGGGTCTTTCTGCCGAACTACTTCAACATCCTGGACCTGCTGGTGGTCCAGCGTGTCC
 CTCATCTCCTTTGGCATCCAGTCCAGTCAATCAATGCTGTGAAGATCTTGGAGTCTGCGAGTACTCA
 GGCCCTGAGGGCCATCAACAGGGCCAAGGGCTAAAGCATGTGGTTCAGTGTGTGTTTGCCTCCCG
 GACCATCGGGAACATCGTGATTGTCACCACCCTGCTGCAGTTCATGTTTGCCTGCATCGGGTCCAGCTC
 TTCAAGGGAAGCTGTACACCTGTTGACACAGTTCCAAGCAGACAGAGGGGAATGCAAGGGCAACTACA
 TCACGTACAAAGACGGGGAGGTTGACCACCCCATCATCCAACCCCGCAGCTGGGAGAACAGCAAGTTTGA
 CTTTGACAATGTTCTGGCAGCCATGATGGCCCTTTCACCGTCTCCACCTTGAAGGGTGGCCAGAGCTG
 CTGTACCCTCCATCGACTCCCACAGGAAGACAAGGGCCCATCTACAACCTACCGTGTGGAGATCTCCA
 TCTTCTTTCATCATCTACATCATCATCATCGCTTCTTCATGATGAACATCTTCGTGGGCTTCGTCATCGT
 CACCTTTCAGGAGCAGGGGAGCAGGAGTACAAGAACTGTGAGCTGGACAAGAACCAGCAGCAGTGCCTG
 GAATACGCCCTCAAGGCCGGCCCTGCGGAGGTACATCCCAAGAACCAGCACCAGTACAAGTGTGGT
 ACGTGGTCAACTCCACTACTTCGAGTACTGATGTTCTGCTCATCCTGCTCAACACCATCTGCCTGGC
 CATGCAGCACTACGGCCAGAGCTGCCTGTTCAAAATCGCCATGAACATCCTCAACATGCTCTTCACTGGC
 CTCTTACCGTGGAGATGATCCTGAAGCTCATTGCCTTCAAACCAAGCACTATTTCTGTGATGCATGGA
 ATACATTTGACGCCTTGATTGTTGTGGGTAGCATTGTTGATATAGCAATCACCGAGGTAACCCAGCTGA
 ACATACCAATGCTCTCCCTCTATGAACGCAGAGGAAAACCTCCGCATCTCCATCACCTTCTTCCGCTG
 TTCCGGTTCATGCGTCTGGTGAAGCTGCTGAGCCGTGGGAGGGCATCCGGACGCTGCTGTGGACCTTCA
 TCAAGTCTTCCAGGCCCTGCCATGTGGCCCTCCTGATCGTGTGCTGTTCTTTCATCTACCGGGTGT
 CGGGATGCAGGTGTTGGGAAAATTGCCCTGAATGATACCACAGAGATCAACCGGAACAACAACCTTCAG
 ACCTTCCCCAGCCGTGCTGCTCCTTTCAGGTGTGCCACCGGGGAGGCTGGCAGGACATCATGCTGG
 CCTGCATGCCAGGCAAGAAGTGTGCCCCAGAGTCCGAGCCAGCAACAGCACGGAGGGTGAACACCCTG
 TGGTAGCAGCTTGTGTCTTACTTTCATCAGCTTCTACATGCTCTGTGCCTTCTGATCATCAACCTC
 TTTGTAGTGTGATCATGGACAACCTTGTACTACCTGACAAGGACTGGTCCATCCTTGGTCCCCACCACC
 TGGATGAGTTTAAAAGAATCTGGGCAGAGTATGACCTGAAGCCAAGGGTGTATCAAACACCTGGATGT
 GGTGACCCTCCTCCGGCGGATTCAGCCGCCACTAGTTTTGGGAAGCTGTGCCCTACCCGCTGGCTTGC
 AAACGCCCTGGTCTCCATGAACATGCCTCTGAACAGCGACGGGACAGTGTGTTCAATGCCACCCTGTTT
 CCCTGGTCAGGACGGCCCTGAGGATCAAACAGAAAGGGACCCAGCCATCAGAGGCCACCAAGGGG
 TGAGGATCCTTTCGCCCCGAGGGAACCTAGAACAAGCCAATGAGGAGCTGCGGGCGATCATCAAGAAG
 ATCTGGAAGCGGACCAGCATGAAGCTGCTGGACCAGGTGGTCCCCCTGCAGGTGATGATGAGGTACCG
 TTGGCAAGTTCTACGCCAGTTCCTGATCCAGGAGTACTTCCGGAAGTTCAAGAAGCGCAAAGAGCAGGG
 CCTTGTGGGCAAGCCCTCCAGAGGAACGCGCTGTCTCTGAGGCTGGCTTGGCACACTGCATGACATC
 GGGCTGAGATCCGACGGCCATCTCTGGAGATCTACCCTGAGGAGGAGCTGGACAAGGCCATGAAGG

AGGCTGTGTCGCTGCTTCTGAAGATGACATCTTCAGGAGGGCCGGTGGCCTGTTTCGGCAACCACGTCA
CTACTACCAAAGCGACGGCCGGAGCGCCTTCCCCAGACCTTCACCACTCAGCGCCCGCTGCACATCAAC
AAGGCGGGCAGCAGCCAGGGCGACACTGAGTCGCCATCCCACGAGAAGCTGGTGGACTCCACCTTACCC
CGAGCAGCTACTCGTCCACCGGCTCCAACGCCAACATCAACAACGCCAACACCGCCCTGGGTCGCT
CCCTCGCCCCGCGGCTACCCAGCAGGTCAGCACTGTGGAGGGCCACGGGCCCCCTTGTCCTGCTGCC
ATCCGGGTGCAGGAGGTGGCGTGAAGCTCAGCTCCAACAGGTGCCACTCCCGGGAGAGCCAGGCAGCCA
TGGCGGGTCAGGAGGAGACGTCTCAGGATGAGACCTATGAAGTGAAGATGAACCATGACACGGAGGCCTG
CAGTGAGCCAGCCTGCTCTCCACAGAGATGCTCTCCTACCAGGATGACGAAAATCGGCAACTGACGCTC
CCAGAGGAGGACAAGAGGGACATCCGGCAATCTCCGAAGAGGGTTTCTCCGCTCTGCCTCACTAGGTC
GAAGGGCCTCCTTCCACCTGGAATGTCTGAAGCGACAGAAGGACCGAGGGGGAGACATCTCTCAGAAGAC
AGTCTGCCCTTGATCTGGTTCATCATCAGGCATTGGCAGTGGCAGGCCTGAGCCCCCTCCTCCAGAGA
AGCCATCCCCTGCCTATTCCCTAGGCCTTTTGCCACCCACCAGCCACACCTGGCAGCCGAGGCTGGC
CCCCACAGCCCGTCCCCACCTGCGGCTTGAGGGGGTCGAGTCCAGTGAGAACTCAACAGCAGCTTCCC
ATCCATCCACTGCGGCTCCTGGGCTGAGACCACCCCGTGGCGGGGCAGCAGCGCCCGCCGGAGAGTC
CGGCCCGTCTCCCTCATGGTGCCAGCCAGGCTGGGGCCCAGGGAGGCAGTTCCACGGCAGTGCCAGCA
GCCTGGTGAAGCGGTCTTGATTTCAGAAGGACTGGGGCAGTTTCTCAAGATCCCAAGTTCATCGAGGT
CACCACCCAGGAGCTGGCCGACGCTGCGACATGACCATAGAGGAGATGGAGAGCGCGGCCGACAACATC
CTCAGCGGGGGCGCCCCACAGAGCCCAATGGCGCCCTTTACCCTTTGTGAACTGCAGGGAGCGGGGGC
AGGACCGAGCCGGGGGCGAAGAGGACGCGGGCTGTGTGCGCGCGGGGTGCGACCGAGTGAGGAGGAGCT
CCAGGACAGCAGGGTCTACGTACGACAGCCTG

ACGCGTACGCGGGCCGCTCGAG - GFP Tag - GTTTAA

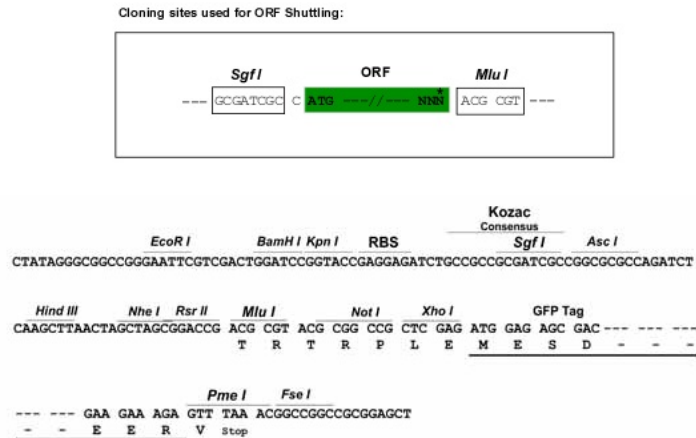
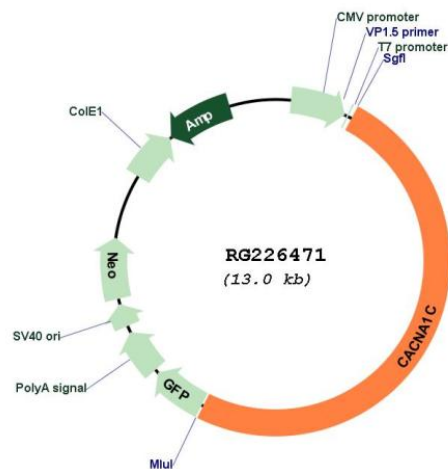
Protein Sequence: >RG226471 representing NM_001129835
 Red=Cloning site Green=Tags(s)

```

MVNENTRMYIPEENHQGSNYGSPRPAHANMNANAAAGLAPEHIPTPGAALSWQAAIDAARQAKLMGSAGN
ATISTVSTQRKRQYQYKPKKQGSTTATRPPRALLCLTLKNPIRRACISIVEWKPFEEIIILLTIFANCVA
LAIYIPFPEDDSNATNSNLERVEYLFLLIIFTVEAFLKVIAYGLLFHPNAYLRNGWNLLDFIIVVGLFSA
ILEQATKADGANALGGKAGFDVKALRAFVLRPLRLVSGVPSLQVVLNSIIKAMVPLLHIALLVLFVII
IYAIIGLELFMGKMHKTCYNQEGIADVPAEDDPSPCALETGHGRQCQNGTVCKPGWDGPKHGITNFDNFA
FAMLTVFQCITMEGWTDVLYWVNDVAVGRDWPWIYFVTLIIIGSFFVLNLVLGVLSEGFSKEREKAKARGD
FQKLRKQQLLEEDLKGYLWDWITQAEDIDPENEDEGMDEEKPRNMSMPTSETESVNTENVAGGDIEGENCG
ARLAHRISKSKFSRYWRRWNRFCRRKCAAVKSNVFWLVI FLVFLNLT IASEHYNQPNWLTEVQDTAN
KALLALFTAEMLLKMYSLGLQAYFVSLFNRFDCFVVCGGILETILVETKIMSPLGISVLRVLRLLRIFKI
TRYWNSLNLVALLNSVRSIASLLLLLFLFIIIFSLGMLFGGKFNDEMQRTRSTFDNFPQSLLTVF
QILTGEDWNSVMYDGMAYGGPSFPGMLVCIYFIIILFCGNYILLNVFLAIAVDNLADAESLTSQKKEE
EEKERKKLARTASPEKKQELVEKPAVGESKEEKIELKSITADGESPPATKINMDDLQPNENEDKSPYNP
ETTGEDEEEPEMPVGRPRPLSELHLKEKAVPMPEASAFFIFSSNNRFRQLQCHRIVNDTIFTNLILFFI
LLSSISLAAEDPVQHTSFRNHILGNADYVFTSIFTLEIILKMTAYGAFLHKGSFCRNYFNILDLLVVSVS
LISFGIQSSAINVVKILRVLRLRPLRAINRAKGLKHVVQCVFVAIRTIQNIIVITLLQFMFACIGVQL
FKGKLYTCSDDSKQTEAECKGNITYYKDGVDHPIIQPRSWENSKFDFDNVLAAMMALFTVSTFEGWPEL
LYRSIDSHTEKGIYNYRVEISIFFIIYIIIIAFFMMNIFVGFVIVTFQEQGEQYKNCDELKDNQRQCV
EYALKARPLRRYIPKNQHQYKVVWVYVNSTYFEYLMFVILLNLTICLAMQHYGQSCLFKIAMNILNMLFTG
LFTVEMILKLI AFKPKHYFCDAWNTFDALIVVGSIVDIAITEVNP AEHTQCSPSMNAEENSRI SITFFRL
FRVMRLVKLLSRGEGIRTLTLLWTFIKSFQALPYVALLIVMLFFIYAVIGMQVFGKIALNDTTEINRNNNFQ
TFPQAVLLLFRCATGEAWQDIMLACMPGKKCAPESEPSNSTEGETPCGSSFVAVFYFISFYMLCAFLIINL
FVAVIMDNFDYLTRDWSILGPHHLDEFKRIWAEYDPEAKGRIKHLDVVTLLRRIQPPLGFGKLCPHRVAC
KRLVSMNPLNSDGTVMFNATL FALVRTALRIKTEEGSPSEAHQGAEDPFRPAGNLEQANEELRAI IKK
IWKRTSMKLLDQVVPAGDDEVTVGKFYATFLIQEYFRKFKRKEQGLVGKPSQRNALSLQAGLRTLHDI
GPEIRRAISGDLTAEELDKAMKEAVSAASEDDIFRRAGGLFGNHVSYQSDGRSAFPQTFTTQRPLHIN
KAGSSQGDTEPSHEKLVSTFTPSYSSTGNSANINNANNTALGRLPRPAGYPTVSTVEGHGPPLSPA
IRVQEVAVKLLSSNRCHSRESQAAMAGQEETSQDETYEVKMNHDTEACSEPSLLSTEMLSYQDDENRQLTL
PEEDKRDIRQSPKRGFLRSASLGRRASFHLECLKRQKDRGGDISQKTVLP LHLVHHQALAVAGLSPLLQR
SHSPASFPRPFATPPATPGSRGWPPQPVPTLRLEGVESSEKLNSSFPSIHCGSWAETTPGGGSSAARRV
RPVSLMVPSQAGAPGRQFHGSASSLVEAVLISEGLGQFAQDPKFI EVTTQELADACDMTIEEMESAADNI
LSGGAPQSPNGALLPFVNCRDAGQDRAGGEEDAGCVRARGRPSEEEELQDSRVVYVSSL
  
```

TRTRPLE - GFP Tag - V

Restriction Sites: Sgfl-MluI

Cloning Scheme:

Plasmid Map:


ACCN: NM_001129835

ORF Size: 6471 bp

OTI Disclaimer: The molecular sequence of this clone aligns with the gene accession number as a point of reference only. However, individual transcript sequences of the same gene can differ through naturally occurring variations (e.g. polymorphisms), each with its own valid existence. This clone is substantially in agreement with the reference, but a complete review of all prevailing variants is recommended prior to use. [More info](#)

OTI Annotation: This clone was engineered to express the complete ORF with an expression tag. Expression varies depending on the nature of the gene.

Components: The ORF clone is ion-exchange column purified and shipped in a 2D barcoded Matrix tube containing 10ug of transfection-ready, dried plasmid DNA (reconstitute with 100 ul of water).

Reconstitution Method:	<ol style="list-style-type: none">1. Centrifuge at 5,000xg for 5min.2. Carefully open the tube and add 100ul of sterile water to dissolve the DNA.3. Close the tube and incubate for 10 minutes at room temperature.4. Briefly vortex the tube and then do a quick spin (less than 5000xg) to concentrate the liquid at the bottom.5. Store the suspended plasmid at -20°C. The DNA is stable for at least one year from date of shipping when stored at -20°C.
RefSeq:	NM_001129835.1 , NP_001123307.1
RefSeq Size:	13537 bp
RefSeq ORF:	6474 bp
Locus ID:	775
UniProt ID:	Q13936
Cytogenetics:	12p13.33
Protein Families:	Druggable Genome, Ion Channels: Calcium, Transmembrane
Protein Pathways:	Alzheimer's disease, Arrhythmogenic right ventricular cardiomyopathy (ARVC), Calcium signaling pathway, Cardiac muscle contraction, Dilated cardiomyopathy, GnRH signaling pathway, Hypertrophic cardiomyopathy (HCM), Long-term potentiation, MAPK signaling pathway, Type II diabetes mellitus, Vascular smooth muscle contraction
Gene Summary:	<p>This gene encodes an alpha-1 subunit of a voltage-dependent calcium channel. Calcium channels mediate the influx of calcium ions into the cell upon membrane polarization. The alpha-1 subunit consists of 24 transmembrane segments and forms the pore through which ions pass into the cell. The calcium channel consists of a complex of alpha-1, alpha-2/delta, beta, and gamma subunits in a 1:1:1:1 ratio. There are multiple isoforms of each of these proteins, either encoded by different genes or the result of alternative splicing of transcripts. The protein encoded by this gene binds to and is inhibited by dihydropyridine. Alternative splicing results in many transcript variants encoding different proteins. Some of the predicted proteins may not produce functional ion channel subunits. [provided by RefSeq, Oct 2012]</p>