

## Product datasheet for **RG226468**

### CACNA1C (NM\_001129836) Human Tagged ORF Clone

#### Product data:

Product Type:	Expression Plasmids
Product Name:	CACNA1C (NM_001129836) Human Tagged ORF Clone
Tag:	TurboGFP
Symbol:	CACNA1C
Synonyms:	CACH2; CACN2; CACNL1A1; CaV1.2; CCHL1A1; LQT8; TS; TS. LQT8
Mammalian Cell Selection:	Neomycin
Vector:	pCMV6-AC-GFP (PS100010)
E. coli Selection:	Ampicillin (100 ug/mL)
ORF Nucleotide Sequence:	>RG226468 representing NM_001129836 Red=Cloning site Blue=ORF Green=Tags(s)

TTTTGTAATACGACTCACTATAGGGCGGCCGGAATTCGTCGACTGGATCCGGTACCGAGGAGATCTGCC  
GCC**CGATCGCC**

ATGGTCAATGAGAATACGAGGATGTACATTCCAGAGGAAAACCACCAAGTTCCAACATGGGAGCCAC  
GCCCGCCCATGCCAACATGAATGCCAATGCGGCAGCGGGGCTGGCCCTGAGCACATCCCCACCCCGG  
GGCTGCCCTGTCGTGGCAGGCGGCCATCGACGCAGCCCGCAGGCTAAGCTGATGGGCAGCGCTGGCAAT  
GCGACCATCTCCACAGTCAGCTCCACGCAGCGGAAGCGGCAGCAATATGGGAAACCAAGAAGCAGGGCA  
GCACCACGGCCACAGCCCGCCCGAGCCCTGCTCTGCCTGACCCTGAAGAACCCATCCGGAGGGCCTG  
CATCAGCATTGTCGAATGGAAACCAATTTGAAATAATTATTTACTGACTATTTTTGCCAATTGTGTGGCC  
TTAGCGATCTATATCCCTTTCCAGAAGATGATCCAACGCCACCAATCCAACCTGGAACGAGTGGAAAT  
ATCTCTTTCTCATAATTTTTACGGTGGAAGCGTTTTTAAAAGTAATCGCCTATGGACTCCTCTTTACCC  
CAATGCCTACCTCCGCAACGGCTGGAACCTACTAGATTTATAATTGTGGTTGTGGGGCTTTTTAGTGCA  
ATTTTAGAACAAGCAACCAAGCAGATGGGGCAAACGCTCTCGGAGGGAAAGGGCCGGATTTGATGTGA  
AGGCGTGAGGGCCTCCGCGTGTGCGCCCTGCGGCTGGTGTCCGGAGTCCCAAGTCTCCAGGTGGT  
CCTGAATTCATCATCAAGGCCATGGTCCCCCTGCTGCACATCGCCCTGCTTGTGCTGTTGTGCATCATC  
ATCTACGCCATCATCGGCTTGGAGCTCTCATGGGGAAGATGCACAAGACCTGTACAACCAGGAGGGCA  
TAGCAGATGTTCCAGCAGAAGATGACCCTTCCCCTTGTGCGCTGGAAACGGGCCACGGCCGCGCAGTGCCA  
GAACGGCACGGTGTGCAAGCCCGCTGGGATGGTCCCAAGCACGGCATCACCAACTTTGACAACCTTTGCC  
TTCGCCATGCTCACGGTGTCCAGTGCATCACCATGGAGGGCTGGACGGACGTGCTGACTGGGTCAATG  
ATGCCGTAGGAAGGGACTGGCCCTGGATCTATTTTGTACTACTAATCATCATAGGGTCATTTTTTGTACT  
TAACTTGGTTCTCGGTGTGCTTAGCGGAGAGTTTTCCAAAGAGAGGGAGAAGGCCAAGGCCCGGGGAGAT  
TTCCAGAAGCTGCGGGAGAAGCAGCAGCTAGAAGAGGATCTCAAAGGCTACCTGGATTGGATCACTCAGG  
CCGAAGACATCGATCCTGAGAATGAGGACGAAGGCATGGATGAGGAGAAGCCCCGAAACATGAGCATGCC  
CACCAGTGAGACCGAGTCCGTCAACACCGAAAACGTGGCTGGAGGTGACATCGAGGGAGAAAACCTCGGG



[View online »](#)

GCCAGGCTGGCCACCGGATCTCCAAGTCAAAGTTCAGCCGCTACTGGCGCCGGTGAATCGGTTCTGCA  
 GAAGGAAGTGCCGCGCCGAGTCAAGTCTAATGTCTTCTACTGGCTGGTATTTTCTGGTGTCTCTCAA  
 CACGCTCACCATTTGCCTCTGAGCACTACAACCAGCCAACTGGCTCACAGAAGTCCAAGACACGGCAAAC  
 AAGGCCCTGTGGCCCTGTTACGGCAGAGATGCTCCTGAAGATGTACAGCCTGGGCTGCAGGCCACT  
 TCGTGTCCCTCTCAACCGCTTTGACTGCTTCGTGTGTGGCGGCATCCTGGAGACCATCCTGGTGA  
 GACCAAGATCATGTCCCACTGGGCATCTCCGTGCTCAGATGCGTCCGGCTGTGAGGATTTTCAAGAT  
 ACGAGGTACTGGAACCTTTGACCAACCTGGTGGCATCCTTGTGAACCTGTGCGCTCCATCGCCTCCC  
 TGCTCCTTCTCCTTCTCCTTTCATCATCTTCTCCCTCCTGGGGATGCAGCTCTTGGAGGAAAGTT  
 CAACTTTGATGAGATGCAGACCCGGAGGAGCACATTTCGATAAATTCCCCAGTCCCTCCTACTGTGTTT  
 CAGATCCTGACCGGGGAGGACTGGAATTCGGTGTATGATGAGGATCATGGCTTATGGCGGCCCTCTT  
 TTCCAGGGATGTTAGTCTGTATTTACTTTCATCATCCTCTTTCATCTGTGGAACCTATATCCTACTGAATGT  
 GTTCTTGGCCATTGCTGTGGACAACCTGGCTGTGCTGAGAGCCTCACATCTGCCAAAAGGAGGAGGAA  
 GAGGAGAAGGAGAGAAAGAGCTGGCCAGGACTGCCAGCCAGAGAAGAAACAAGAGTTGGTGGAGAAGC  
 CGGCAGTGGGGGAATCCAAGGAGGAGAAGATTGAGCTGAAATCCATCACGGCTGACGGAGAGTCTCCACC  
 CGCCACCAAGATCAACATGGATGACCTCCAGCCAAATGAAAATGAGGATAAGAGCCCTACCCCAACCCA  
 GAAACTACAGGAGAAGAGGATGAGGAGGAGCCAGAGATGCTGTGGCCCTCGCCACGACCACTCTCTG  
 AGCTTACCTTAAGGAAAAGGCAGTGCCATGCCAGAAGCCAGCGGTTTTTCATCTTACGCTCTAACAA  
 CAGGTTTTCGCCTCCAGTGCCACCGCATTGTCAATGACACGATCTTACCACCTGATCCTTCTTCTTATT  
 CTGCTCAGCAGCATTTCCCTGGCTGCTGAGGACCCGGTCCAGCACACCTCCTCAGGAACCATATCCTAG  
 GCAATGCAGACTATGCTTCACTAGTATCTTTACATTAGAAAATTATCCTTAAGATGACTGCTTATGGGGC  
 TTTCTTGACAAGGGTCTTTCTGCCGAACTACTTCAACATCCTGGACCTGCTGGTGGTCCAGCGTGTCC  
 CTCATCTCCTTTGGCATCCAGTCCAGTCAATCAATGTGTGAAGATCTTGGAGTCTGCGGACTACTCA  
 GGCCCTGAGGGCCATCAACAGGGCCAAAGGGCTAAAGCATGTGGTTCAGTGTGTGTTTGCCTCCCG  
 GACCATCGGGAACATCGTGATTGTCACCACCCTGCTGCAGTTCATGTTTGCCTGCATCGGGTCCAGCTC  
 TTCAAGGGAAGCTGTACACCTGTTACAGACGTTCCAAGCAGACAGAGGGGAATGCAAGGGCAACTACA  
 TCACGTACAAAGACGGGGAGGTTGACCACCCCATCATCCAACCCCGCAGCTGGGAGAACAGCAAGTTTGA  
 CTTTGACAATGTTCTGGCAGCCATGATGGCCCTTTCACCGTCTCCACCTTGAAGGGTGGCCAGAGCTG  
 CTGTACCCTCCATCGACTCCCACAGGAAGACAAGGGCCCATCTACAACCTACCGTGTGGAGATCTCCA  
 TCTTCTTTCATCATCTACATCATCATCATCGCTTCTTTCATGATGAACATCTTCTGGGCTTCGTCATCGT  
 CACCTTTCAGGAGCAGGGGAGCAGGAGTACAAGAACTGTGAGCTGGACAAGAACCAGCAGCAGTGCCTG  
 GAATACGCCCTCAAGGCCGGCCCTGCGGAGGTACATCCCAAGAACCAGCACCAGTACAAGTGTGGT  
 ACGTGGTCAACTCCACCTACTTCGAGTACTGATGTTCTGCTCCTCATCCTGCTCAACACCATCTGCCTGGC  
 CATGCAGCACTACGGCCAGAGCTGCCTGTTCAAAATCGCCATGAACATCCTCAACATGCTCTTCACTGGC  
 CTCTTACCGTGGAGATGATCCTGAAGCTCATTGCCTTCAAACCAAGGGTTACTTTAGTGTATCCCTGGA  
 ATGTTTTTACTTCTCATCGTAATTGGCAGCATAATTGACGTCAATCTCAGTGAGACTAATCACTATTT  
 CTGTGATGCATGGAATACATTTGACGCCTTGATTGTTGTGGGTAGCATTGTTGATATAGCAATCACCGAG  
 GTAACAACGCAGAGGAAAACCTCCGCATCTCCATCACCTTCTCCGCTGTTCCGGGTGATGCGCTGCG  
 TGAAGCTGCTGAGCCGTGGGAGGGCATCCGGACGCTGCTGTGGACCTTTCATCAAGTCTTCCAGGCCCT  
 GCCCTATGTGGCCCTCCTGATCGTGATGCTGTTCTTTCATCTACGCGGTGATCGGGATGCAGGTGTTGGG  
 AAAATTGCCCTGAATGATACCACAGAGATCAACCGGAACAACAACCTTTCAGACCTTCCCCAGCCGTGC  
 TGCTCCTCTTTCAGGTGTGCCACCGGGGAGGCTGGCAGGACATCATGCTGGCCTGCATGCCAGGCAAGAA  
 GTGTGCCCCAGAGTCCGAGCCAGCAACAGCACGGAGGGTGAACACCCTGTGGTAGCAGCTTTGCTGTC  
 TTCTACTTTCATCAGCTTTCATGCTCTGTGCCTTCTGATCATCAACCTCTTTGTAGTGTTCATCATGG  
 ACAACTTTGACTACCTGACAAGGGACTGGTCCATCCTTGGTCCCCACCACCTGGATGAGTTTAAAGAAAT  
 CTGGGCAGAGTATGACCCTGAAGCAAGGGTCTGATCAAACACCTGGATGTGGTACCCTCCTCCGGCGG  
 ATTCAGCCGCCACTAGGTTTTGGGAAGCTGTGCCCTCACCGCTGGCTTGCAAACGCCTGGTCTCCATGA  
 ACATGCCTCTGAACAGCGACGGGACAGTCAATGTTCAATGCCACCCTGTTTGGCCTGGTCCAGACGGCCCT  
 GAGGATCAAAACAGAAGGGAACCTAGAACAAGCCAATGAGGAGCTGCGGGCGATCATCAAGAAGATCTGG  
 AAGCGGACCAGCATGAAGCTGCTGGACAGGTGGTGGCCCTGCAGGTGATGATGAGGTCACCGTTGGCA  
 AGTTTACGCCACGTTCTGATCCAGGAGTACTTCCGGAAGTTCAAGAAGCGCAAAGAGCAGGGCCCTTGT  
 GGGCAAGCCCTCCAGAGGAACGCGCTGTCTCTGCAGGCTGGCTTGGCACACTGCATGACATCGGGCCT  
 GAGATCCGACGGGCCATCTTGGAGATCTACCCTGAGGAGGAGCTGGACAAGGCCATGAAGGAGGCTG

TGTC CGCTGCTTCTGAAGATGACATCTTCAGGAGGGCCGGTGGCCTGTTCCGGCAACCACGTCAGCTACTA  
CCAAAGCGACGGCCGGAGCGCCTTCCCCAGACCTTCACCACTCAGCGCCCGCTGCACATCAACAAGGCG  
GGCAGCAGCCAGGGCGACTGAGTCGCCATCCCACGAGAAGCTGGTGGACTCCACCTTCACCCCGAGCA  
GCTACTCGTCCACCGGCTCCAACGCCAACATCAACAACGCCAACACCCGCCCTGGGTGCGCTCCCTCG  
CCCCCGCGGTACCCAGCAGGTCAGCACTGTGGAGGGCCACGGGCCCCCTTGTCCCTGCCATCCGG  
GTGCAGGAGGTGGCGTGGAAGCTCAGCTCCAACAGGTGCCACTCCCGGAGAGCCAGGCAGCCATGGCGG  
GTCAGGAGGAGAGCTCAGGATGAGACCTATGAAGTGAAGATGAACCATGACACGGAGGCCTGCAGTGA  
GCCAGCCTGCTCTCCACAGAGATGCTCTCTACCAGGATGACGAAAATCGGCAACTGACGCTCCCAGAG  
GAGGACAAGAGGGACATCCGGCAATCTCCGAAGAGGGTTTCTCCGCTCTGCCTCACTAGTTCGAAGGG  
CCTCCTTCCACCTGGAATGTCTGAAGCGACAGAAGGACCGAGGGGGAGACATCTCTCAGAAGACAGTCTT  
GCCCTTGATCTGGTTCATCATCAGGCATTGGCAGTGGCAGGCCTGAGCCCCCTCTCCAGAGAAGCCAT  
TCCCTGCCTCATTCCCTAGGCCTTTTGCACCCACCAGCCACACCTGGCAGCCGAGGCTGGCCCCAC  
AGCCCGTCCCCACCTGCGGCTTGAGGGGGTCCAGTCCAGTGAGAACTCAACAGCAGCTTCCATCCAT  
CCACTGCGGCTCCTGGGCTGAGACCACCCCGGTGGCGGGGCAGCAGCGCCGCCGGAGAGTCCGGCCC  
GTCTCCCTCATGGTGCCAGCCAGGCTGGGGCCCAGGGAGGCAGTTCCACGGCAGTGCCAGCAGCCTGG  
TGAAGCGGTCTTGATTTAGAAGGACTGGGGCAGTTTGCTCAAGATCCCAAGTTCATCGAGGTACCAC  
CCAGGAGCTGGCCGACGCTGCGACATGACCATAGAGGAGATGGAGAGCGCGGCCACAACATCCTCAGC  
GGGGGCGCCCCACAGAGCCCAATGGCGCCTCTTACCCTTTGTGAACTGCAGGGACCGGGGCAGGACC  
GAGCCGGGGCGAAGAGGACGCGGGCTGTGTGCGCGCGGGGTGACCGAGTGAGGAGGAGCTCCAGGA  
CAGCAGGGTCTACGTCAGCAGCCTG

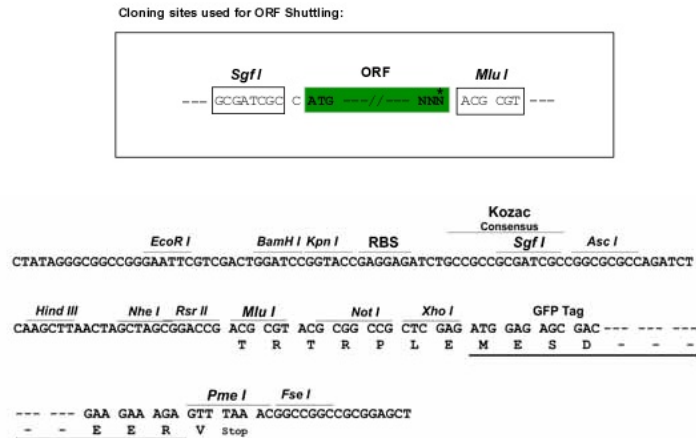
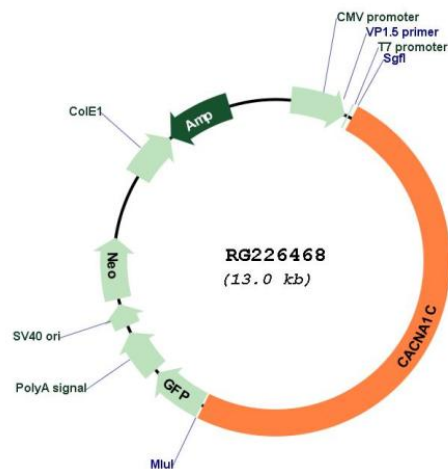
ACGCGTACGCGGCCGCTCGAG - GFP Tag - GTTTAA

**Protein Sequence:** >RG226468 representing NM\_001129836  
 Red=Cloning site Green=Tags(s)

```
MV NENT RMYI PEEN HQGS NYG SPR PAHAN MNAN AAAG LAPE HIPT PGAAL SWQA AIDAAR QAKLMGSAGN
AT ISTV SSTQRKRQQY GKPKKQGSTTATRPPRALLCLTLKNPIRRACISIVEWKPF EIIILLTIFANCVA
LAIYIPFPEDDSNATNSNLERVEYLFLLIIFTVEAFLKVIAYGLLFHPNAYLRNGWNLLDFIIVVGLFSA
ILEQATKADGANALGGKAGFDVKALRAFVRRLRRLVSGVPSLQVVLNSIIKAMVPLLHIALLVLFVII
IYAIIGLELFMGKMHKTCYNQEGIADVPAEDDPSPCALETGHGRQCQNGTVCKPGWDGPKHGITNFDNFA
FAMLT VFCITMEGWTDVLYWVND AVGRDWPWIYFVTLIIIGSFFVLNLVLGVLSGEFSKEREKAKARGD
FQKLR EQQL EEDLKG YLDWITQA EIDPENEDEGMDEEKPRNMSMPTSETESVNTENVAGGDIEGENCEG
ARLAHRISKSKFSRYWRRWRNRCRRKCAAVKSNVFWLVI FLVFLNTLTIASEHYNQPNWLTEVQDTAN
KALLALFTAEMLLKMYSLGLQAYFVSLFNRFDCFV VCGGILETILVETKIMSPLGISVLRVLRLLRIFKI
TRYWNSL SNLVA SLLNSVRSIASLLLLLFLFIIIFSL LGMQLFGGKFNDEMQRTRSTFDNFPQSLLTVF
QILTGEDWNSVMYD GIMAYGGPSFPGMLVCIYFIIILFICGNYILLNVFLAIAVDNLADAESL TSAQKEE
EEKERKKLARTASPEKKQELVEKPAVGESKEEKIELKSITADGESPPATKINMDDLQPNENEDKSPYPNP
ETTGEDEEEPEMPVGRPRPLSELHLKEKAVMPPEASAFFIFSSNNRFR LQCHRIVNDTIFTNLILFFI
LLSSISLAAEDPVQHTSFRNHILGNADYVFTSIFTLEIILKMTAYGAFLHKGSFCRNYFNILDLLVVSVS
LISFGIQSSA INVVKILRVLRLRPLRAINRAKGLKHVVQCVFVAIR TIGNIVIVITLLQMFACIGVQL
FKGKLYTCS DSSKQTEAECKGN YITYKDG EVDHPIIQPRSWENSKFDFDNVLAAMMALFTVSTFEGWPEL
LYRSIDSHTE DKGPIYNYRVEISIFFIIYIIIIAFFMMNIFVGFVIVTFQE QGEQEYKNCELDKNQRQCV
EYALKARPLRRYIPKNQH QYKVVWYVNSTYFEYLMFV LILLNTICLAMQHYGQSCLFKIAMNILNMLFTG
LFTVEMILKLI AFKPKGYFSDPWNVDFLIVIGS IIDVILSETNH YFCDAWNTFDALIVVGSIVDIAITE
VNNAEENSRI SIIFFRLFRVMRLVKLLSRGEGIR TLLWTFIKSFQALPYVALLIVMLFFIYAVIGMQVFG
KIALNDTTE INRNNNFQTFPQAVLLLFRCATGEAWQD IMLACMPGKKCAPESEPSNSTEGETPCGSSFAV
FYFISFYMLCAFLIINL FVAVIMDNFDYLTRDWSILGPHHLDEFKRIWAEYDPEAKGR IKHLDVVTLRR
IQPPLGFGKLC PHRVACKRLVSMNPLNSDGTVMFNATL FALVRTALRIKTEGNLEQANEELRAI IKKIW
KRTSMKLLDQV VPPAGDDEVTVGKFYATFLIQEYFRKFKRKEQGLVGKPSQRNALSLQAGLRTLHDIGP
EIRRAISGDLTAE EELDKAMKEAVSAASEDDIFRRAGGLFGNHVSY YQSDGRSAFPQTF TQRPLHINKA
GSSQGDTE SPSHEKLV DSTFTPSSYSSTGSNANIN NANTALGRLPRPAGY PSTVSTVEGHG PPLSPAIR
VQEVAWKLSSNRCHSRESQAAMAGQEETSQDETYEVKMNHDTEACSEPSLLSTEMLSYQDDENRQLTLPE
EDKRDIRQSPKRGFLRSASLGRRASFHLECLKRQKDRGGDISQKT V LPLHLVHHQALAVAGL SPLLQRSH
SPASFPRPFATPPATPGSRGWPPQVPVTLRLEGVESSEKLNSSFP SIHCGSWAETTPGGGSSAARRVRP
VSLMVP SQAGAPGRQFHGSASSLVEAVL ISEGLGQFAQDPKFIEVTTQELADACDMTIEEMESAADN ILS
GGAPQSPNGALLPFVNCRDAGQDRAGGEEDAGCVRARGRPSEELQDSRVYVSSL
```

TRTRPLE - GFP Tag - V

**Restriction Sites:** Sgfl-MluI

**Cloning Scheme:**

**Plasmid Map:**


**ACCN:** NM\_001129836

**ORF Size:** 6465 bp

**OTI Disclaimer:** The molecular sequence of this clone aligns with the gene accession number as a point of reference only. However, individual transcript sequences of the same gene can differ through naturally occurring variations (e.g. polymorphisms), each with its own valid existence. This clone is substantially in agreement with the reference, but a complete review of all prevailing variants is recommended prior to use. [More info](#)

**OTI Annotation:** This clone was engineered to express the complete ORF with an expression tag. Expression varies depending on the nature of the gene.

**Components:** The ORF clone is ion-exchange column purified and shipped in a 2D barcoded Matrix tube containing 10ug of transfection-ready, dried plasmid DNA (reconstitute with 100 ul of water).

<b>Reconstitution Method:</b>	<ol style="list-style-type: none"><li>1. Centrifuge at 5,000xg for 5min.</li><li>2. Carefully open the tube and add 100ul of sterile water to dissolve the DNA.</li><li>3. Close the tube and incubate for 10 minutes at room temperature.</li><li>4. Briefly vortex the tube and then do a quick spin (less than 5000xg) to concentrate the liquid at the bottom.</li><li>5. Store the suspended plasmid at -20°C. The DNA is stable for at least one year from date of shipping when stored at -20°C.</li></ol>
<b>RefSeq:</b>	<a href="#">NM_001129836.1</a> , <a href="#">NP_001123308.1</a>
<b>RefSeq Size:</b>	13531 bp
<b>RefSeq ORF:</b>	6468 bp
<b>Locus ID:</b>	775
<b>UniProt ID:</b>	<a href="#">Q13936</a>
<b>Cytogenetics:</b>	12p13.33
<b>Protein Families:</b>	Druggable Genome, Ion Channels: Calcium, Transmembrane
<b>Protein Pathways:</b>	Alzheimer's disease, Arrhythmogenic right ventricular cardiomyopathy (ARVC), Calcium signaling pathway, Cardiac muscle contraction, Dilated cardiomyopathy, GnRH signaling pathway, Hypertrophic cardiomyopathy (HCM), Long-term potentiation, MAPK signaling pathway, Type II diabetes mellitus, Vascular smooth muscle contraction
<b>Gene Summary:</b>	<p>This gene encodes an alpha-1 subunit of a voltage-dependent calcium channel. Calcium channels mediate the influx of calcium ions into the cell upon membrane polarization. The alpha-1 subunit consists of 24 transmembrane segments and forms the pore through which ions pass into the cell. The calcium channel consists of a complex of alpha-1, alpha-2/delta, beta, and gamma subunits in a 1:1:1:1 ratio. There are multiple isoforms of each of these proteins, either encoded by different genes or the result of alternative splicing of transcripts. The protein encoded by this gene binds to and is inhibited by dihydropyridine. Alternative splicing results in many transcript variants encoding different proteins. Some of the predicted proteins may not produce functional ion channel subunits. [provided by RefSeq, Oct 2012]</p>