

Product datasheet for **RG226450**

Dysferlin (DYSF) (NM_001130985) Human Tagged ORF Clone

Product data:

Product Type:	Expression Plasmids
Product Name:	Dysferlin (DYSF) (NM_001130985) Human Tagged ORF Clone
Tag:	TurboGFP
Symbol:	DYSF
Synonyms:	FER1L1; LGMD2B; LGMDR2; MMD1
Mammalian Cell Selection:	Neomycin
Vector:	pCMV6-AC-GFP (PS100010)
E. coli Selection:	Ampicillin (100 ug/mL)
ORF Nucleotide Sequence:	>RG226450 representing NM_001130985 Red=Cloning site Blue=ORF Green=Tags(s)

TTTTGTAATACGACTCACTATAGGGCGGCCGGAATTCGTCGACTGGATCCGGTACCGAGGAGATCTGCC
GCC**CGATCGCC**

ATGCTGTGCTGCCTGCTGGTGAGGGCCAGCAACCTCCCCAGTGCGAAGAAGGACCGGCGCAGCGACCCTG
TCGCAAGCCTGACTTCCGAGGGGTGAAGAAGAGAACCAAGTCATCAAGAACAGCGTGAACCCTGTATG
GAATGAGGGATTGAATGGGACCTCAAGGGCATCCCCGGACCAGGGCTCTGAGCTTCATGTGGTGGTC
AAAGACCATGAGACGATGGGAGGAACAGGTTCTGGGGGAAGCCAAGTCCCCTCCGAGAGGTCTCTCG
CCACCCCTAGTCTGTCCGCCAGTTCAATGCCCCCTGCTGGACACCAAGAAGCAGCCCACAGGGGCTC
GCTGGTCTGCAGGTGTCTACACACCGCTGCCTGGAGCTGTGCCCTGTTCCCGCCCCCTACTCCTCTG
GAGCCCTCCCCGACTCTGCCTGACCTGGATGTAGTGGCAGGCGGGGACAGAGCCGGGCCGAGACTTGGT
CCCTGCTCAGTGACAGCACCATGGACACGAGATACTCTGGAAAGAAGTGGCCGGCCCCACGGACACAGG
AGGAGAGGAAGACACAGAGGACCAGGGACTCACTGGAGATGAGGCGGAGCCATTCTGGATCAAAGCGGA
GGCCCCGGGGCTCCACCAACCCCAAGGAAACTACCTTACGTCTCCGCCCACTACCCGGGATCAAAA
GAAAGCGAAGTGCCTACATCTAGAAAGCTGTGTGACAAAACCGCAGGATTTCCAGATCAGGGTCCA
GGTGATCGAGGGGCGCCAGCTGCCGGGGTGAACATCAAGCTGTGGTCAAGGTTACCGTGCAGGGCAG
ACCAAGCGGACGGGATCCACAAGGGAACAGCCACTTCAATGAGACTTTTTCTTCAACTTGTGTTG
ACTCTCCTGGGGAGCTGTTTGTGAGCCATCTTATCACGGTGGTAGACTCTCGTTCTCTCAGGACAGA
TGCTCTCCTCGGGGAGTCCGGATGGACGTGGGCACCATTTACAGAGAGCCCCGGCACGCCTATCTCAGG
AAGTGGCTGCTGCTCAGACCCTGATGACTTCTCTGCTGGGGCCAGAGGCTACCTGAAAACAAGCCTTT
GTGTGCTGGGGCTGGGGACGAAGCGCCTCTGGAGAGAAAAGACCCCTCTGAAGACAAGGAGGACATTGA
AAGCAACCTGCTCCGGCCACAGGCGTAGCCCTGCGAGGAGCCCACTTCTGCCTGAAGGTCTTCCGGGCC
GAGGACTTGCCGACAGATGGACGATGCCGTGATGGACAACGTGAAACAGATCTTTGGCTTCGAGAGTAACA
AGAAGAAGTGGTGGACCCCTTTGTGGAGTCACTTTGGGGGAAAATGCTGTGCAGCAAGATCTTGA
GAAGACGGCAACCTCAGTGAACAGAACATCACACTGCCTGCCATGTTCCCTCATGTGCGAAAAA



[View online >](#)

ATGAGGATTCGTATCATAGACTGGGACCGCTGACTCACAATGACATCGTGGCTACCACCTACCTGAGTA
TGTCGAAAATCTCTGCCCTGGAGGAGAAAATAGAAGTGGATGACTACCTGGGCTTCTCCCACTTTTGG
GCCCTGTACATCAACCTCTATGGCAGTCCCAGAGAGTTACAGGCTTCCCAGACCCCTACACAGAGCTC
AACACAGGCAAGGGGGAAGGTGTGGCTTATCGTGGCCGGCTTCTGCTCTCCCTGGAGACCAAGCTGGTGG
AGCACAGTGAACAGAAGTGGAGGACCTTCTGCGGATGACATCTCCGGTGGAGAAGTACCTTAGGAG
GCGCAAGTACTCCCTGTTTGGCGCTTCTACTCAGCCACCATGCTGCAGGATGTGGATGATGCCATCCAG
TTTGAGGTACGCATCGGGAACACGGAACAAGTTCGACATGACCTGCCCTGCCGTGCCCTCCACCTAC
AGTACAGCCGTGCAGTCTTTGACGGGTGCCACTACTACTACCTACCCTGGGGTAACGTGAAACCTGTGGT
GGTGTGTATCCTACTGGGAGGACATCAGCCATAGAATCGAGACTCAGAACCAGCTGCTTGGGATTGCT
GACCGGCTGGAAGCTGGCCTGGAGCAGGTCCACCTGGCCCTGAAGGCGCAGTGTCCACGGAGGACGTGG
ACTCGCTGGTGGCTCAGCTGACGGATGAGCTCATCGCAGGCTGCAGCCAGCCTCTGGGTGACATCCATGA
GACACCCTCTGCCACCCACTGGACCAGTACCTGTACCAGCTGCGCACCCATCACCTGAGCCAACTCACT
GAGGCTGCCCTGGCCCTGAAGCTCGGCCACAGTACCTGACCTGCGCACCCATCACCTGAGCCAACTCACT
TCCTGCGTCTGCGTGCCTGGCAGAGGAGCCCCAGAACAGCTGCCGGACATCGTATCTGGATGCTGCA
GGGAGACAAGCGTGTGGCATAACAGCGGTGCCGCCACCAAGTCTTCTCCCGCGGGGTGCCAAC
TACTGTGGCAAGAATTGTGGGAAGCTACAGACAATCTTTCTGAAATATCCGATGGAGAAGGTGCCTGGCG
CCCGGATGCCAGTGCAGATACGGGTCAAGCTGTGGTTGGGCTCTCAGTGGATGAGAAGGAGTTCAACCA
GTTTGCTGAGGGGAAGCTGTCTGTCTTTGCTGAAACCTATGAGAACGAGACTAAGTTGGCCCTTGTGGG
AACTGGGGCACAACGGGCCTCACCTACCCCAAGTTTTCTGACGTACGGGCAAGTCAAGCTACCCAAGG
ACAGCTTCCGCCCTCGGCCGGCTGGACCTGGGCTGGAGATTGGTTTCGTGTGTCCGGAGAAGACTCTGT
CCATGACATGGACCGCGTACCTGAGCTTCGTGGAAGAGGTGTTGAGAACCAGACCCGGCTTCCCGGA
GGCCAGTGGATCTACATGAGTGACAACACACCGATGTGAACGGGGAAGGTTGCTTCCCAAGGATGACA
TTGAGTGGCCACTGGGCTGGAAGTGGGAAGATGAGGAATGGTCCACAGACCTCAACCCGGCTGTGATGA
GCAAGGCTGGGAGTATAGCATCACCATCCCCCGGAGCGGAAGCCGAAGCACTGGTCCCTGAGAAG
ATGTAACACACACCGACCGCGCGCTGGGTGCGCCTGCGCAGGAGGGATCTCAGCCAAATGGAAGCAC
TGAAAAGGCACAGGCAGGCGGAGGCGGAGGGCTGGGAGTACGCCTCTCTTTTGGCTGGAAGTT
CCACCTCGAGTACCGCAAGACAGATGCCTTCCGCCCGCGCGCTGGCGCCGTGCGATGGAGCCACTGGAG
AAGACGGGGCTGCAGCTGTGTTGCCCTTGGGGGGCCCTGGCGCGGTGATGGATGACAAGAGTGAAG
ATTCCATGTCCGTCTCCACCTTGGCTTCGGTGTGAACAGACCCACGATTTCTGCATATTCGACTATGG
GAACCGCTACCATCTACGCTGCTACATGTACCAGGCCCGGACCTGGCTGCGATGGACAAGGACTTTTT
TCTGATCCCTATGCCATCGTCTCCTTCTGCACCAGAGCCAGAAGACGGTGGTGGTGAAGAACCCCTTA
ACCCACCTGGGACCAGACGCTCATCTTCTACGAGATCGAGATCTTTGGCGAGCCGGCCACAGTTGCTGA
GCAACCGCCAGCATTGTGGTGGAGCTGTACGACCATGACACTTATGGTGCAGACGAGTTTATGGGTGCG
TGCATCTGTCAACCGAGTCTGGAACGGATGCCACGGCTGGCTGGTTCCTACTGACGAGGGGAGCCAGC
CGTCCGGGGAGCTGTGGCCTCTTTGAGCTCATCCAGAGAGAGAAGCCGGCCATCCACCATATTCTGG
TTTTGAGGTGCAGGAGACATCAAGGATCCTGGATGAGTCTGAGGACACAGACCTGCCCTACCCACCC
CAGAGGGAGGCCAACATCTACATGGTTCCTCAGAACATCAAGCCAGCGCTCCAGCGTACCGCCATCGAGA
TCCTGGCATGGGGCTGCGGAACATGAAGAGTTACCAGCTGGCCAACTCTCTCCCCAGCCCTGTGGT
AGAGTGTGGGGCCAGACGGTGCAGTCTGTGTCATCAGGAACCTCCGGAAGAACCCCACTTTGACATC
TGACCCCTCTTATGGAAGTGTGCTGCCAGGGAGGAGCTCTACTGCCCCCCTACACCGTCAAGGTCA
TCGATAACCGCCAGTTTGGCCGCGGCCTGTGGTGGGCCAGTGTACCATCCGCTCCTGGAGAGTCTCT
GTGTGACCCTACTCGGCGGAGAGTCCATCCCCACAGGGTGGCCAGACGATGTGAGCCTACTCAGTCT
GGGGAAGACGTGCTCATCGACATTGATGACAAGGAGCCCTCATCCCCATCCAGGAGGAAGATTTCATCG
ATTGGTGGAGCAAATCTTTGCCCTCCATAGGGGAGAGGGAAAAGTGGCGCTCCTACTGGAGAAGGATTT
TGACACCCTGAAGGTCTATGACACACAGCTGGAGAATGTGGAGGCCTTTGAGGGCCTGTCTGACTTTTGT
AACACCTTCAAGCTGTACCGGGCAAGACGAGGAGGAGACAGAAGATCCATCTGTGATTGGTGAATTTA
AGGGCCTCTTCAAATTTATCCCTCCCAGAAGCCAGCCATCCCCATGCCCCAAGACAGTTCCACCA
GCTGGCCGCCAGGGACCCAGGAGTGCTTGGTCCGTATCTACATTGTCCGAGCATTGGCTGACGCC
AAGGACCCCAATGAAAAGTGTGATCCTTACATCAAGATCTCCATAGGGAAGAAATCAGTGTGACGAGG
ATAACTACATCCCTGCACGCTGGAGCCGATTTGAAAAGATGTTTCGAGCTGACCTGCACTCTGCCTCT
GGAGAAGGACCTAAAGATCACTCTATGACTATGACCTCCTCTCAAGGACGAAAAGATCGGTGAGACG
GTCGTGACCTGGAGAACAGGCTGCTGTCCAAGTTTGGGCTCGTGTGGACTCCACAGACCTACTGTG

TCTCTGGACCGAACCAGTGGCGGGACCAGCTCCGCCCTCCCAGCTCCTCCACCTTTCTGCCAGCAGCA
TAGAGTCAAGGCACCTGTGTACCGGACAGACCGTGTAAATGTTTCAGGATAAAGAATATCCATTGAAGAG
ATAGAGGCTGGCAGGATCCCAAACCCACACCTGGGCCAGTGGAGGAGCGTCTGGCTCTGCATGTGCTTC
AGCAGCAGGGCCTGGTCCCGGAGCACGTGGAGTACGGCCCTCTACAGCCCCCTGCAGCCAGACATCGA
GCAGGGGAAGCTGCAGATGTGGTTCGACCTATTTCCGAAGGCCCTGGGGCGGCCTGGACCTCCCTTCAAC
ATCACCCACGGAGAGCCAGAAGGTTTTTCCTGCGTTGTATTATCTGGAATACCAGAGATGTGATCCTGG
ATGACCTGAGCCTCACGGGGGAGAAGATGAGCGACATTTATGTGAAAGGTTGGATGATTGGCTTTGAAGA
ACACAAGCAAAAGACAGACGTGCATTATCGTTCCCTGGGAGGTGAAGGCAACTTCAACTGGAGGTTCAAT
TTCCCCTTCGACTACCTGCCAGCTGAGCAAGTCTGTACCATTGCCAAGAAGGATGCCTTCTGGAGGCTGG
ACAAGACTGAGAGCAAAATCCCAGCACGAGTGGTGTCCAGATCTGGGACAATGACAAGTTCTCCTTTGA
TGATTTTCTGGGCTCCCTGCAGCTCGATCTCAACCGCATGCCAAGCCAGCCAAGACAGCCAAGAAGTGC
TCCTTGGACCAGCTGGATGATGCTTTCCACCCAGAATGGTTTGTGTCCCTTTTGGAGCAGAAAACAGTGA
AGGGCTGGTGGCCCTGTGTAGCAGAAGAGGGTGAAGAAGAAATACTGGCGGGCAAGCTGGAATGACCTT
GGAGATTGTAGCAGAGAGTGAGCATGAGGAGCGGCCTGCTGGCCAGGGCCGGGATGAGCCCAACATGAAC
CCTAAGCTTGAGGACCCAAGGCGCCCCGACACCTCCTTCTGTGGTTTACCTCCCATACAAGACCATGA
AGTTCATCCTGTGGCGGGTTTTCCGGTGGGCCATCATCCTTTCATCATCCTTTCATCCTGCTGTGT
CCTGGCCATCTTCATCTACGCCTTCCCGAAGTATGCTGCCATGAAGCTGGTGAAGCCCTTCAGC

ACGCGTACGCGGCCGCTCGAG – GFP Tag – GTTAA

Protein Sequence: >RG226450 representing NM_001130985
 Red=Cloning site Green=Tags(s)

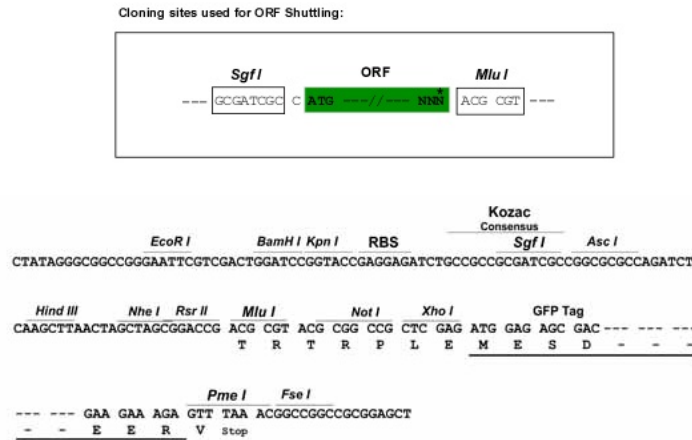
```

MLCCLLVRASNLPSAKKDRRSDPVASL TFRGVKKRTKVIKNSVNPVWNEGFEDLKGIPLDQGSSELHVVV
KDHEMGRNRFLGEAKVPLREVLATPSL SASFNAPLLDTKKQPTGASLVLQVSYTLP GAVPLFPPPTPL
EPSPTLPDL DVVAGGGQ SRAETWSLLSDSTMDTRYSGKKWPAPTD TGGEEDTEDQGLTGDEAEPFLDQSG
GPGAPTPRKLPSRPPPHYPG IKRKRSAPTSRKL LSDKPQDFQIRVQVIEGRQLPGVNIKPVVKVT AAGQ
TKRTRIHKGNSPLFNETLFFNLFDSPGELFDEPIFITVVD SRSRLRTDALLGEFRMDVGTIYREPRHAYLR
KWLLLSDPDDFSAGARGYLKTS LCVLGPDEAPLERKDPSEDKEDIESNLLRPTGVALRGAHFLCKVFRA
EDLPQMDDAVMDNVKQIFGFESNKNL VDPFVEVSFAGKMLCSKILEKTANPQWNQNIITLPAMFSPMCEK
MRIRIIDWDRLTHNDIVATTYLSMSKISAPGGEIEVDDYL GFLPTFGPCYINLYGSPRETFGFPDPYTEL
NTGKGEGVAYRGRLLL SLETKLVEHSEQKVEDLPADDILRVEKYLR RRKYSLFAAFYSATMLQD VDDAIQ
FEVSI GN YGNKFDMTCLPLASTTQYSRAVFDGCHYYYYLPWGNVKPVVVLSSY WEDISHRIETQNQLLGIA
DRLEAGLEQVHLALKAQCSTEDVDSLVAQLTDEL IAGCSQPLGDIHETPSATHLDQYL YQLRTHHL SQIT
EAALALKLGHSELPAALEQAEDWLLRLRALAEEPQNSLPD IVIWMLQGDKRVAYQRPVPAHQVLF SRRGAN
YCGKNCGLQTI FLKYPMEKVPGARMPVQIRVKLWFG LSVDEKEFNQFAEGKLSVFAET YENETKLALVG
NWGTTGLTYPKFS DVTGKIKLPKDSFRPSAGWTWAGDWFV CPEKTL LHDMDAGHLSFVEEVFENQTRLPG
GQWIYMSDNYTDVNGEKVLPKDDIECPLGWKWEDEE WSTD LNRAVDEQGW EYSITIPPERKPKHWVPAEK
MYYTHRRRRWVRLRRRDL SQMEALKRHRQAEAE GEGWEYASLFGWK FHLEYRKTDAFRRRRWRRRMEPLE
KTGPAAVFALEGALGGVMDKSEDSMSVSTL SFGVNRPTISCI FDYGNRYHLRCYMYQARDAAMDKDSF
SDPYAIVSFLHQSQKT VVVKNTLNPTWDQTLIFYEIEIFGEPATVAEQPPSIVVELYDHD TYGADEFMGR
CICQPSLERMPRLAWFPLTRGSQPSGELLASFELIQREKPAIHHIPGF EYQETSRI LDESED TDLPYPPP
QREANIYMVPQNIKPALQRTAIEILAWGLRNMKSYQLANI SSPSLVVECGGQTVQSCVIRNLRKNPNFDI
CTLFMEVMLPREELYCPPIITVKVIDNRQFGRRPVV GQCTIRSLESFLCDPYSAESPSPQGGPDDV SLLSP
GEDVLDIDDDKEPLIPIQE EEFIDWWSKFFASIGEREKCGSYLEKDFDTLKVYDTQLENVEAF EGLSDFC
NTFKLYRGKTQEETEDPSVIGEFKGLFKIYPLPEDPAIPMPPRQFHQLAAQGPQECLVRIYIVRAFG LQP
KDPNGKCDPYIKISIGKKSVDQDNYIPCTLEPVFGKMFELTCTLPLEKDLKITL YDYDLLSKDEKIGET
VVDLENRLLSKFGARCGLPQTYCVSGPNQWRDQLRPSQLLHLFCQQHRVKAPVYRTDRVMFQDKEYSIEE
IEAGRIPNPHLGPVEERLALHVLQQQGLVPEHVESRPLYSPLQPDIEQGKLQMWVDLFPKALGRPGPPFN
ITPRRRARRFFLRCCIWNTRDVILDDL SLTGEKMSDIYVKGWMIGFEEHKQKTDVHYRSLGGEGNFNWRFI
FPFDYLP AEQVCTIAKKDAFWRLDKTESKIPARVVFQIWDNDKFSFDDFLGSLQLDLNRMPKPAKTAKKC
SLDQLDDAFHPEV FVSLFEQKTVKGWWPCVAEEG EKKILAGKLEMTLEI VAESEHEERPAGQGRDEPNMN
PKLEDPRRPDTSFLWFTSPYKTMKFI LWRRFRWAILFIILFILLFLAIFIYAFPNYAAMKLVKPF S
  
```

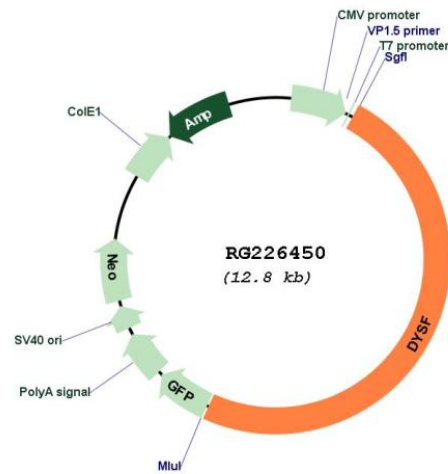
TRTRPLE - GFP Tag - V

Restriction Sites: Sgfl-MluI

Cloning Scheme:



Plasmid Map:



ACCN: NM_001130985

ORF Size: 6294 bp

OTI Disclaimer: The molecular sequence of this clone aligns with the gene accession number as a point of reference only. However, individual transcript sequences of the same gene can differ through naturally occurring variations (e.g. polymorphisms), each with its own valid existence. This clone is substantially in agreement with the reference, but a complete review of all prevailing variants is recommended prior to use. [More info](#)

OTI Annotation: This clone was engineered to express the complete ORF with an expression tag. Expression varies depending on the nature of the gene.

Components: The ORF clone is ion-exchange column purified and shipped in a 2D barcoded Matrix tube containing 10ug of transfection-ready, dried plasmid DNA (reconstitute with 100 ul of water).

Reconstitution Method:

1. Centrifuge at 5,000xg for 5min.
2. Carefully open the tube and add 100ul of sterile water to dissolve the DNA.
3. Close the tube and incubate for 10 minutes at room temperature.
4. Briefly vortex the tube and then do a quick spin (less than 5000xg) to concentrate the liquid at the bottom.
5. Store the suspended plasmid at -20°C. The DNA is stable for at least one year from date of shipping when stored at -20°C.

RefSeq: [NM_001130985.2](#)

RefSeq Size: 6709 bp

RefSeq ORF: 6297 bp

Locus ID: 8291

UniProt ID: [O75923](#)

Cytogenetics: 2p13.2

Protein Families: Transmembrane

Gene Summary: The protein encoded by this gene belongs to the ferlin family and is a skeletal muscle protein found associated with the sarcolemma. It is involved in muscle contraction and contains C2 domains that play a role in calcium-mediated membrane fusion events, suggesting that it may be involved in membrane regeneration and repair. In addition, the protein encoded by this gene binds caveolin-3, a skeletal muscle membrane protein which is important in the formation of caveolae. Specific mutations in this gene have been shown to cause autosomal recessive limb girdle muscular dystrophy type 2B (LGMD2B) as well as Miyoshi myopathy. Alternative splicing results in multiple transcript variants. [provided by RefSeq, Aug 2008]