

Product datasheet for **RG226449**

Dysferlin (DYSF) (NM_001130980) Human Tagged ORF Clone

Product data:

| | |
|---------------------------|--|
| Product Type: | Expression Plasmids |
| Product Name: | Dysferlin (DYSF) (NM_001130980) Human Tagged ORF Clone |
| Tag: | TurboGFP |
| Symbol: | DYSF |
| Synonyms: | FER1L1; LGMD2B; LGMDR2; MMD1 |
| Mammalian Cell Selection: | Neomycin |
| Vector: | pCMV6-AC-GFP (PS100010) |
| E. coli Selection: | Ampicillin (100 ug/mL) |
| ORF Nucleotide Sequence: | >RG226449 representing NM_001130980 Red=Cloning site Blue=ORF Green=Tags(s) |

TTTTGTAATACGACTCACTATAGGGCGGCCGGAATTCGTCGACTGGATCCGGTACCGAGGAGATCTGCC
GCC**CGATCGCC**

ATGCTGAGGGTCTTCATCCTCTATGCCGAGAACGTCCACACACCCGACACCGACATCAGCGATGCCTACT
GCTCCGCGGTGTTTGCAGGGGTGAAGAAGAGAACCAAAGTCATCAAGAACAGCGTGAACCCTGTATGGAA
TGAGGGATTTGAATGGGACCTCAAGGGCATCCCCCTGGACCAGGGCTCTGAGCTTCATGTGGTGGTCAA
GACCATGAGACGATGGGAGGAACAGGTTCTGGGGAAAGCAAGTCCCCTCCGAGAGGTCCTCGCCA
CCCCTAGTCTGTCCGCCAGCTTCAATGCCCCCTGCTGGACACCAAGAAGCAGCCACAGGGCCCTCGCT
GGTCTGCAGGTGCTACACACCGCTGCCTGGAGCTGTGCCCTGTCCCGCCCCCTACTCCTCTGGAG
CCCTCCCCGACTCTGCCTGACCTGGATGTAGTGGCAGGCGGGGGACAGAGCCGGGCCGAGACTTGGTCCC
TGCTCAGTGACAGCACCATGGACACGAGATACTCTGAAAAGAAGTGGCCGGCCCCACGGACACAGGAGG
AGAGGAAGACACAGAGGACCAGGGACTCACTGGAGATGAGGCGGAGCCATTCTGGATCAAAGCGGAGGC
CCGGGGCTCCCACCACCCCAAGGAACTACCTTACGTCTCCGCCCACTACCCGGGATCAAAGAA
AGCGAAGTGCGCCTACATCTAGAAAGCTGCTGTGACACAAACCGCAGGATTTCCAGATCAGGGTCCAGGT
GATCGAGGGCGCCAGCTGCCGGGGTGAACATCAAGCCTGTGGTCAAGGTTACCGTGCAGGGCAGACC
AAGCGGACGCGGATCCACAAGGAAACAGCCACTCTTCAATGAGACTCTTTTCAACTGTTTGGACT
CTCCTGGGAGCTGTTTGTAGCCATCTTTATCACGGTGGTAGACTCTCGTTCTCAGGACAGATGC
TCTCCTCGGGGAGTTCCGGATGGACGTGGGCACCATTTACAGAGAGCCCCGGCACGCCTATCTCAGGAAG
TGGCTGCTGCTCTCAGACCCTGATGACTTCTGCTGGGGCCAGAGGCTACCTGAAAACAAGCCTTTGTG
TGCTGGGGCCTGGGACGAAGCGCCTCTGGAGAGAAAAGACCCCTCTGAAGACAAGGAGGACATTGAAAG
CAACTGCTCCGGCCACAGGCGTAGCCCTGCGAGGAGCCACTTCTGCCTGAAGGTTCCGGGCCGAG
GACTTGCCGACAGATGGACGATGCCGTGATGGACAACGTGAAACAGATCTTTGGCTTCGAGAGTAACAAGA
AGAACTTGGTGGACCCCTTTGTGGAGGTGACGTTTGGGGGAAAATGCTGTGCAGCAAGATCTTGGAGAA
GACGGCAACCCCTCAGTGAACCAAGACATCACACTGCCTGCCATGTTTCCCTCCATGTGGAAAAAATG



[View online >](#)

AGGATTCGTATCATAGACTGGGACCGCCTGACTACAATGACATCGTGGCTACCACCTACCTGAGTATGT
CGAAAACTCTGCCCTGGAGGAGAAATAGAAGTGGATGACTACCTGGGCTTCTCCCACTTTTGGGCC
CTGCTACATCAACCTCTATGGCAGTCCCAGAGAGTTTACAGGCTTCCCAGACCCCTACACAGAGCTCAAC
ACAGGCAAGGGGAAGGTGTGGCTTATCGTGGCCGGCTTCTGCTCTCCCTGGAGACCAAGCTGGTGGAGC
ACAGTGAACAGAAGGTGGAGGACCTTCTGCGGATGACATCCTCCGGTGGAGAAGTACCTTAGGAGGCG
CAAGTACTCCCTGTTTGGCCCTTCTACTCAGCCACCATGCTGCAGGATGTGGATGATGCCATCCAGTTT
GAGGTACGATCGGGAACACGGAACAAGTTGACATGACCTGCCTGCCCTGCCCTCCACCACTCAGT
ACAGCCGTGCAGTCTTTGACGGGTGCCACTACTACTACCTACCCTGGGGTAACTGAAACCTGTGGTGGT
GCTGTCTACTGTTGGGAGACATCAGCCATAGAATCGAGACTCAGAACCAGCTGCTTGGGATTGCTGAC
CGGCTGGAAGCTGGCCTGGAGCAGGTCCACCTGGCCCTGAAGGCGCAGTCTCCACGGAGGAGCTGGACT
CGTGGTGGCTCAGCTGACGGATGAGCTCATCGCAGGCTGCAGCCAGCCTCTGGGTGACATCCATGAGAC
ACCCTCTGCCACCCACCTGGACCAGTACCTGTACCAGTGCACCCATCACCTGAGCCAAATCACTGAG
GCTGCCCTGGCCCTGAAGCTCGGCCACAGTGAAGTCCCTGCAGCTCTGGAGCAGGCGGAGGACTGGCTCC
TGCGTCTGCGTGGCCTGGCAGAGGAGCCCGCAGAACAGCCTGCCGGACATCGTCTGATGCTGCAGGG
AGACAAGCGTGTGGCATACCAGCGGGTGCCCGCCACCAAGTCTTCTCCCGCGGGGTGCCAACTAC
TGTGGCAAGAATTGTGGGAAGCTACAGACAATCTTTCTGAAATATCCGATGGAGAAGGTGCTGGCGCCC
GGATGCCAGTGCAGATACGGGTCAAGCTGTGGTTTGGGCTCTCAGTGGATGAGAAGGAGTTCAACCAGTT
TGCTGAGGGGAAGCTGTCTGTCTTTGCTGAAACCTATGAGAACGAGACTAAGTTGGCCCTTGTGGGAAC
TGGGGCACAACGGGCCTCACCTACCCCAAGTTTCTGACGTACGGGCAAGTCAAGTACCCAAGGACA
GCTTCCGCCCCCTCGCCGGCTGGACCTGGGCTGGAGATTGGTTGCTGTGTCCGGAGAAGACTCTGCTCCA
TGACATGGACGCCGCTCACCTGAGCTTCGTGGAAGAGGTGTTGAGAACCAGACCCGGCTTCCCGGAGGC
CAGTGGATCTACATGAGTGACAACACCCGATGTGAACGGGGAGAAGGTGCTTCCCAAGGATGACATTG
AGTCCCACTGGGCTGGAAGTGGGAAGATGAGGAATGGTCCACAGACCTCAACCGGGCTGTCGATGAGCA
AGGCTGGGAGTATAGCATCACCATCCCCCGGAGCGGAAGCCGAAGCACTGGGTCCCTGCTGAGAAGATG
TACTACACACACCGACGGCGGGCTGGGTGCGCCTGCGCAGGAGGGATCTCAGCCAAATGGAAGCACTGA
AAAGGCACAGGCAGGCGGAGGCGGAGGGCTGGGAGTACGCCCTCTTTTTGGTGGAAAGTTCCA
CCTCGAGTACCGCAAGACAGATGCCTTCCGCGCCGCGCTGGCGCCGTCGCATGGAGCCACTGGAGAAG
ACGGGGCTGCAGCTGTGTTGCCCTTGAAGGGGGCCCTGGGCGGCGTGTGGATGACAAGAGTGAAGATT
CCATGTCCGTCTCACCTTGAGCTTCGGTGTGAACAGACCCACGATTTCTGCATATTCGACTATGGGAA
CCGCTACCATCTACGCTGCTACATGTACCAGGCCGGGACCTGGTGGATGGACAAGGACTCTTTTTCT
GATCCCTATGCCATCGTCTCCTTCTGCACCAGAGCCAGAAGACGGTGGTGGTGAAGAACCCTTAACC
CCACCTGGGACCAGACGCTCATCTTCTACGAGATCGAGATCTTTGGCGAGCCGGCCACAGTTGCTGAGCA
ACCGCCAGCATTGTTGGTGGAGCTGTACGACCATGACACTTATGGTGCAGACGAGTTTATGGGTCGCTGC
ATCTGTCAACCGAGTCTGGAACGGATGCCACGGCTGGCCTGGTCCCCTGACGAGGGGACAGCCAGCCGT
CGGGGGAGCTGCTGGCCTCTTTGAGCTCATCCAGAGAGAGAAGCCGGCCATCCACCATATTCCTGGTTT
TGAGGTGCAGGAGACATCAAGGATCCTGGATGAGTCTGAGGACACAGACCTGCCCTACCCACCACCCAG
AGGGAGGCCAACATCTACATGGTTCCTCAGAACATCAAGCCAGCGCTCCAGCGTACCGCCATCGAGATCC
TGCCATGGGGCCCGGGAACATGAAGAGTTACCAGCTGGCCAACATCTCTCCCCAGCCTCGTGGTAGA
GTGTGGGGCCAGACGGTGCAGTCTGTGTCATCAGAACCTCCGGAAGAACCCTTGCATCTGCACTGCG
ACCCTTTCATGGAAGTATGCTGCCAGGAGGAGCTCTACTGCCCCCATCACCGTCAAGGTATCG
ATAACCGCAGTTTGGCCGCGGCTGTGGTGGGCCAGTGTACCATCCGCTCCCTGGAGAGCTTCTGTG
TGACCCCTACTCGGCGGAGAGTCCATCCCCACAGGGTGGCCAGACGATGTGAGCCTACTCAGTCTGGG
GAAGAGCTGCTCATCGACATTGATGACAAGGAGCCCTCATCCCCATCCAGGAGGAAGAGTTTCATCGATT
GGTGGAGCAAATCTTTGCCTCCATAGGGGAGAGGAAAAGTGGGCTCTACCTGGAGAAGGATTTTGA
CACCTGAAGTCTATGACACACAGCTGGAGAATGTGGAGGCTTTGAGGGCCTGTCTGACTTTTGAAC
ACCTTCAAGCTGTACCGGGCAAGACGCGAGGAGACAGAAGATCCATCTGTGATTGGTGAATTAAGG
GCCTTCAAAATTTATCCCTCCAGAAGACCCAGCCATCCCCATGCCCAAGACAGTCCACCAGCT
GGCCGCCAGGGACCCAGGAGTCTTGGTCCGTATCTACATTGTCCGAGCATTGGCCTGCAGCCAAAG
GACCCCAATGAAAGTGTGATCCTTACATCAAGATCTCCATAGGGAAGAAATCAGTGAGTGACCAGGATA
ACTACATCCCCTGCACGCTGGAGCCCGTATTTGAAAAGATGTTGAGCTGACCTGCACTCTGCCTCTGGA
GAAGGACCTAAAGATCACTCTCTATGACTATGACCTCCTCTCCAAGGACGAAAAGATCGGTGAGACGGTC
GTCGACCTGGAGAACAGGCTGCTGTCCAAGTTGGGGCTCGTGTGGACTCCCACAGACCTACTGTGCT

CTGGACCGAACCAAGTGGCGGGACCAGCTCCGCCCTCCCAGCTCCTCCACCTCTTCTGCCAGCAGCATAG
AGTCAAGGCACCTGTGTACCGGACAGACCGTGTAAATGTTTCAGGATAAAGAATATTCATTGAAGAGATA
GAGGCTGGCAGGATCCCAAACCCACACCTGGGCCAGTGGAGGAGCGTCTGGCTCTGCATGTGCTTCAGC
AGCAGGGCCTGGTCCCGGAGCACGTGGAGTCACGGCCCCCTACAGCCCCCTGCAGCCAGACATCGAGCA
GGGAAGCTGCAGATGTGGTTCGACCTATTTCCGAAGGCCCTGGGGCGCCTGGACCTCCCTTCAACATC
ACCCACGGAGAGCCAGAAGTTTTCTGCGTTGTATTATCTGGAATACCAGAGATGTGATCCTGGATG
ACCTGAGCCTCACGGGGAGAAGATGAGCGACATTTATGTGAAAGTTGGATGATTGGCTTGAAGAACA
CAAGCAAAGACAGACGTGCATTATCGTTCCTGGGAGGTGAAGGCAACTTCAACTGGAGGTTCAATTTTC
CCCTTCGACTACCTGCCAGCTGAGCAAGTCTGTACCATTGCCAAGAAGGATGCCTTCTGGAGGCTGGACA
AGACTGAGAGCAAAATCCCAGCACGAGTGGTGTCCAGATCTGGGACAATGACAAGTTCTCCTTTGATGA
TTTTCTGGGCTCCCTGCAGCTCGATCTCAACCGCATGCCAAGCCAGCCAAGACAGCCAAGAAGTGTCTC
TTGGACCAGCTGGATGATGCTTTCCACCCAGAATGGTTTGTGTCCCTTTTTGAGCAGAAAACAGTGAAGG
GCTGGTGGCCCTGTGTAGCAGAAGAGGGTGAAGAAAAACTGGCGGGCAAGCTGGAAATGACCTTGA
GATTGTAGCAGAGAGTGTGAGCATGAGGAGCGCCCTGCTGGCCAGGGCCGGGATGAGCCCAACATGAACCT
AAGCTTGAGGACCAAGGCGCCCGACACCTCCTTCTGTGGTTTACCTCCCATACAAGACCATGAAGT
TCATCCTGTGGCGCGTTTCCGGTGGGCCATCATCCTTTCATCATCCTTTCATCCTGTGCTGTCTCT
GGCCATCTTCATCTACGCCTTCCCGAATATGCTGCCATGAAGCTGGTGAAGCCCTTCAGC

ACGCGTACGCGGCCGCTCGAG – GFP Tag – GTTAA

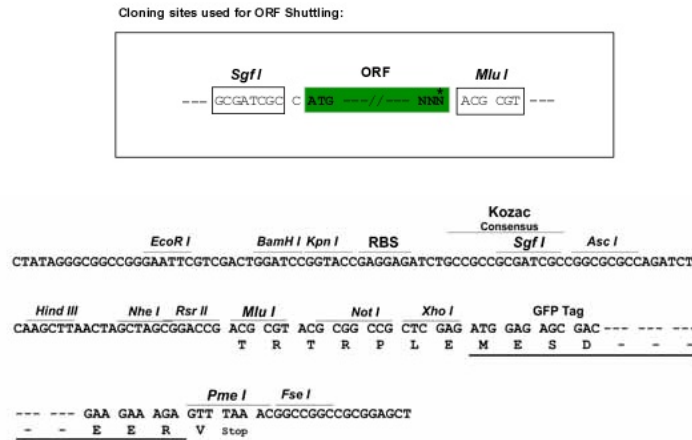
Protein Sequence: >RG226449 representing NM_001130980
 Red=Cloning site Green=Tags(s)

MLRVFILYAENVHTPDTDISDAYCSAVFAGVKKRTRKVIKNSVNPVWNEGFWDLKGIPLDQGSSELHVVVK
 DHETMGRNRFLEAKVPLREVLATPSLSASFNAPLLDTKKQPTGASLVLQVSYTLPAGAVPLFPPPTPLE
 PSPTLPDLDVVAGGGQSRAETWSLLSDSTMDTRYSGKKWPAPTDGTGGEEDTEDQGLTGDEAEPFLDQSGG
 PGAPTTPRKLPSPRPPHYPGIKRKRSAPTS SRKLLSDKPQDFQIRVQVIEGRQLPGVNIKPVVKVTAAGQT
 KRTRIHKGN SPLFN ETLFFNLFDSPGELFDEPIFITVVD SRSRLTDALLGEFRMDVGTIYREPRHAYLRK
 WLLLSDPDDFSAGARGYLKTSCLVLPDGDEAPLERKDPSEDKEDIESNLLRPTGVALRGAHFCLKVFRAE
 DLPQMDDAVMDNVKQIFGFESNKKNLVDPFVEVSFAGKMLCSKILEKTANPQWNQNILPAMFSPMCEKM
 RIRIIDWDRLTHNDIVATTYLSMSKISAPGGEIEVDDYLGFLPTFGPCYINLYGSPREFTGFPDPYTELN
 TGKGEGVAYRGRLLL SLETKLVEHSEQVEDLPADDILRVEKYLRRRKYSLFAAFYSATMLQDVDDAIQF
 EVSIGNYGNKFDMTCLPLASTTQYSRAVFDGCHYYLPLWGNV KPVVVLSSYWEDISHRIETQNQLLG IAD
 RLEAGLEQVHLALKAQCSTEDVDSLVAQLTDEL IAGCSQPLGDIHETPSATHLDQYLQLRTHHLSQITE
 AALALKLGHSELPAALEQAEDWLLRLRALAEEPQNSLPDIVIWMQLQDKRVAYQRPVPAHQVLF SRRGANY
 CGKNCGLQTI FLKYPMEKVPGARMPVQIRVKLWFGLSVDEKEFNQFAEGKLSVFAETYENETKLALVGN
 WGTTLTYPKFS DVTGKIKLPKDSFRPSAGWTWAGDWFVCEKTL LHMDAGHLSFVEEVFENQTRLPGG
 QWIYMSDNYTDVNGEKVLPKDDIECPLGKWEDEEWSTDLNRAVDEQGW EYSITIPPERKPKHWVPAEKM
 YYTHRRRRWVRLRRRDL SQMEALKRHRQAEAE GEGWEYASLFGWKFHLEYRKTDAFRRRRRRRRMEPLEK
 TGPAAVFALEGALGGVMDDKSEDSMSVSTLSFGVNRPTISCI FIDYGNRYHLRCYMYQARDLAAMDKDSFS
 DPYAIVSFLHQSKTVVVKNTLNPTWDQTLIFYEIEIFGEPATVAEQPPSIVVELYDHD TYGADEFMGRG
 ICQPSLERMPRLAWFPL TRGSQPSGELLASFELIQREKPAIHHIPGF EVQETSRI LDESEDTLPYPPPQ
 REANIYMPQNIKPALQRTAIEILAWGLRNMKSYQLANISSPSLVVECGGQTVQSCVIRNLRKNPNFDIC
 TLFMEVMLPREELYCPPITVKVIDNRQFGRRPVVGQCTIRSLESFLCDPYSAESPSPQGGPDDVSLSPG
 EDVLIDIDDKEPLIPIQEEEFIDWWSKFFASIGEREKCGSYLEKDFDTLKVYDTQLENVEAFEGLSDFCN
 TFKLYRGTQEETEDPSVIGEFKGLFKIYPLPEDPAIPMPPRQFHQLAAQGPQECLVRIYIVRAFLGQPK
 DPNKCDPYIKISIGKKSVDQDNYIPCTLEPVFGKMFELTCTLPLEKDLKITLYDYDLLSKDEKIGETV
 VDLENRLLSKFGARGLPQTYCVSGPNQWRDQLRPSQLLHLFCQQHRVKAPVYRTDRVMFQDKEYSIEEI
 EAGRIPNPHLGPVEERLALHVLQQQLVPEHVSRPLYSPLQPDIEQGLQMWDLPFKALGRPGPPFNI
 TPRRARRFFLRCIWNTRDVILDDLSTG EKMSDIYVKGWMI GFEEHKQKTDVHYRSLGGEGNFNWRFI
 PFDYLP AEQVCTIAKKDAFWRLDKTESKIPARVVFQIWDNDKFSFDDFLGSLQLDLNRMPKPAKTAKKCS
 LDQLDDAFHPEWFVSLFEQKTVKGWVPCVAEEGKILAGKLEMTLEI VAESEHEERPAGQGRDEPNMNP
 KLEDP RPDT SFLWFTSPYKTMKFI L WRRFRWAIILFIILFILLFLAIFIYAFPNYAAMKLVKPF S

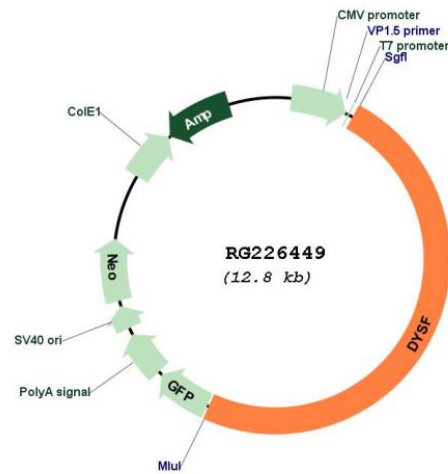
TRTRPLE - GFP Tag - V

Restriction Sites: SgfI-MluI

Cloning Scheme:



Plasmid Map:



ACCN: NM_001130980

ORF Size: 6291 bp

OTI Disclaimer: The molecular sequence of this clone aligns with the gene accession number as a point of reference only. However, individual transcript sequences of the same gene can differ through naturally occurring variations (e.g. polymorphisms), each with its own valid existence. This clone is substantially in agreement with the reference, but a complete review of all prevailing variants is recommended prior to use. [More info](#)

OTI Annotation: This clone was engineered to express the complete ORF with an expression tag. Expression varies depending on the nature of the gene.

Components: The ORF clone is ion-exchange column purified and shipped in a 2D barcoded Matrix tube containing 10ug of transfection-ready, dried plasmid DNA (reconstitute with 100 ul of water).

Reconstitution Method:

1. Centrifuge at 5,000xg for 5min.
2. Carefully open the tube and add 100ul of sterile water to dissolve the DNA.
3. Close the tube and incubate for 10 minutes at room temperature.
4. Briefly vortex the tube and then do a quick spin (less than 5000xg) to concentrate the liquid at the bottom.
5. Store the suspended plasmid at -20°C. The DNA is stable for at least one year from date of shipping when stored at -20°C.

RefSeq: [NM_001130980.2](#)

RefSeq Size: 6941 bp

RefSeq ORF: 6294 bp

Locus ID: 8291

UniProt ID: [O75923](#)

Cytogenetics: 2p13.2

Protein Families: Transmembrane

Gene Summary: The protein encoded by this gene belongs to the ferlin family and is a skeletal muscle protein found associated with the sarcolemma. It is involved in muscle contraction and contains C2 domains that play a role in calcium-mediated membrane fusion events, suggesting that it may be involved in membrane regeneration and repair. In addition, the protein encoded by this gene binds caveolin-3, a skeletal muscle membrane protein which is important in the formation of caveolae. Specific mutations in this gene have been shown to cause autosomal recessive limb girdle muscular dystrophy type 2B (LGMD2B) as well as Miyoshi myopathy. Alternative splicing results in multiple transcript variants. [provided by RefSeq, Aug 2008]