

## Product datasheet for **RG226441**

### Dysferlin (DYSF) (NM\_001130976) Human Tagged ORF Clone

#### Product data:

Product Type:	Expression Plasmids
Product Name:	Dysferlin (DYSF) (NM_001130976) Human Tagged ORF Clone
Tag:	TurboGFP
Symbol:	DYSF
Synonyms:	FER1L1; LGMD2B; LGMDR2; MMD1
Mammalian Cell Selection:	Neomycin
Vector:	pCMV6-AC-GFP (PS100010)
E. coli Selection:	Ampicillin (100 ug/mL)
ORF Nucleotide Sequence:	>RG226441 representing NM_001130976 Red=Cloning site Blue=ORF Green=Tags(s)

TTTTGTAATACGACTCACTATAGGGCGGCCGGAATTCGTCGACTGGATCCGGTACCGAGGAGATCTGCC  
GCC**CGATCGCC**

ATGCTGAGGGTCTTCATCCTCTATGCCGAGAACGTCCACACACCCGACACCGACATCAGCGATGCCTACT  
GCTCCGCGGTGTTGCAGGGGTGAAGAAGAGAACCAAAGTCATCAAGAACAGCGTGAACCCGTATGGAA  
TGAGGGATTTGAATGGGACCTCAAGGGCATCCCCCTGGACCAGGGCTCTGAGCTTCATGTGGTGGTCAA  
GACCATGAGACGATGGGAGGAACAGGTTCTGGGGGAAGCCAAGTCCCCTCCGAGAGGTCCTCGCCA  
CCCCTAGTCTGTCCGCCAGCTTCAATGCCCCCTGCTGGACACCAAGAAGCAGCCACAGGGCCCTCGCT  
GGTCTGCAGGTGCTACACACCGCTGCCTGGAGCTGTGCCCTGTCCCGCCCTACTCCTCTGGAG  
CCCTCCCCGACTCTGCCTGACCTGGATGTAGTGGCAGACACAGGAGGAGGAAGACACAGAGGACCAGG  
GACTACTGGAGATGAGGCGGAGCCATTCTGGATCAAAGCGGAGGCCCGGGGGCTCCCACCACCCCAAG  
GAAACTACCTTACGTCCTCCGCCCACTACCCCGGATCAAAAGAAAGCGAAGTGCGCCTACATCTAGA  
AAGCTGCTGTGAGACAAACCGCAGGATTTCCAGATCAGGGTCCAGGTGATCGAGGGGCGCCAGCTGCCG  
GGTGAAACATCAAGCCTGTGGTCAAGGTTACCGCTGCAGGGCAGACCAAGCGGACCGGATCCACAAGGG  
AAACAGCCCACTTCAATGAGACTCTTTCTTCAACTTGTGACTCTCCTGGGAGCTGTTTGATGAG  
CCCCTTTATCACGGTGTAGACTCTCGTTCTCTCAGGACAGATGCTCTCCTCGGGAGTCCGGATGG  
ACGTGGGCACCATTTACAGAGAGCCCGGCACGCCTATCTCAGGAAGTGGCTGCTGCTCTCAGACCTGA  
TGACTTCTGCTGCGGGCCAGAGGCTACCTGAAAACAAGCCTTTGTGTGCTGGGGCTGGGACGAAGCG  
CCTCTGGAGAGAAAAGACCCCTCTGAAGACAAGGAGGACATTGAAAGCAACCTGCTCCGCCCCACAGGCG  
TAGCCCTGCGAGGAGCCCACTTCTGCCTGAAGTCTTCCGGGCCGAGGACTTGCCGCAGATGGACGATGC  
CGTGATGGACAACGTGAAACAGATCTTTGGCTTCGAGAGTAACAAGAAGAACTTGGTGGACCCCTTTGTG  
GAGGTCAGCTTTGCGGGGAAAAATGCTGTGCAGCAAGATCTGGAGAAGACGGCAACCCCTCAGTGAACC  
AGAACATCACACTGCCTGCCATGTTCCCTCCATGTGCGAAAAAATGAGGATTCGTATCATAGACTGGGA  
CCGCTGACTCACAATGACATCGTGGCTACCACCTACCTGAGTATGTCGAAAATCTCTGCCCTGGAGGA



[View online >](#)

GAAATAGAAGTGGATGACTACCTGGGCTTCTCCCACTTTTGGGCCCTGCTACATCAACCTCTATGGCA  
 GTCCCAGAGAGTTCACAGGCTTCCCAGACCCTACACAGAGCTCAACACAGGCAAGGGGGAAGGTGTGGC  
 TTATCGTGGCCGGCTTCTGCTCTCCCTGGAGACCAAGCTGGTGGAGCACAGTGAACAGAAGGTGGAGGAC  
 CTTCTGCGGATGACATCCTCCGGGTGGAGAAGTACCTTAGGAGGCGCAAGTACTCCCTGTTTGGCGCT  
 TCTACTCAGCCACCATGCTGCAGGATGTGGATGATGCCATCCAGTTTGGGTGAGTCAAGTCCCTACTGGGAGGCA  
 GAACAAGTTCGACATGACCTGCCTGCCCTGCCCTCCACCACTCAGTACAGCCGTGCAGTCTTTGACGGG  
 TGCCACTACTACTACCTACCTGGGGTAACTGAAACCTGTGGTGGTGTCTCATCTACTGGGAGGACA  
 TCAGCCATAGAATCGAGACTCAGAACCAGCTGCTTGGGATTGCTGACCGGCTGGAAGCTGGCCTGGAGCA  
 GGTCCACCTGGCCCTGAAGGCGCAGTGTCTCCAGGAGGACGTGGACTCGTGGTGGCTCAGCTGACGGAT  
 GAGCTCATCGCAGGCTGCAGCCAGCCTCTGGGTGACATCCATGAGACACCCTCTGCCACCACCTGGACC  
 AGTACCTGTACCAGTGCAGCCACCATCACCTGAGCCAAATCACTGAGGCTGCCCTGGCCCTGAAGCTCGG  
 CCACAGTGAAGTCCCTGCAGCTCTGGAGCAGGCGGAGGACTGGCTCCTGCGTCTGCGTGCCTGGCAGAG  
 GAGCCCCAGAACAGCCTGCCGGACATCGTATCTGGATGCTGCAGGGAGACAAGCGTGTGGCATAACCAGC  
 GGGTGGCCGCCACCAAGTCTCTTCTCCCGCGGGGTGCCAACTACTGTGGCAAGAATTGTGGGAAGCT  
 ACAGACAATCTTTCTGAAATATCCGATGGAGAAGGTGCCCTGGCGCCCGGATGCCAGTGCAGATACGGGTC  
 AAGCTGTGGTTTGGGCTCTCAGTGGATGAGAAGGAGTTCAACCAGTTTGTGAGGGGAAGCTGTCTGTCT  
 TTGCTGAAACCTATGAGAACGAGACTAAGTTGGCCCTTGTGGGAAGTGGGGCACAAACGGCCCTCACCTA  
 CCCAAGTTTTCTGACGTACGGGCAAGATCAAGCTACCCAAGGACAGCTTCCGCCCTCGGCCGGCTGG  
 ACCTGGGCTGGAGATTGGTTCTGTGTCCGGAGAAGACTCTGCTCCATGACATGGACGCCGGTCACTGA  
 GCTTCTGTGAAGAGGTGTTTGAACAGACCCGGCTTCCCGGAGGCCAGTGGATCTACATGAGTGACAA  
 CTACACCGATGTGAACGGGGAGAAGGTGCTTCCAAGGATGACATTGAGTGGCCACTGGGCTGGAAGTGG  
 GAAGATGAGGAATGGTCCACAGACCTCAACCGGCTGTGATGAGCAAGGCTGGGAGTATAGCATCACCA  
 TCCCCCGGAGCGGAAGCCGAAGCACTGGGTCCCTGCTGAGAAGATGTACTACACACCCGACGGCGGGC  
 CTGGGTGCGCCTGCGCAGGAGGGATCTCAGCCAATGGAAGCACTGAAAAGGCACAGGCAGGCGGAGGCG  
 GAGGGCGAGGGCTGGGAGTACGCCTCTCTTTTTGGCTGGAAGTCCACCTCGAGTACCGCAAGACAGATG  
 CCTTCCGCCGCCCGCTGGCGCCGTGCGATGGAGCCACTGGAGAAGACGGGGCCTGCAGCTGTGTTTGC  
 CCTTGAGGGGGCCTGGGCGCGTGTGGATGACAAGAGTGAAGATTCCATGTCCGTCTCCACCTTGAGC  
 TTCGGTGTGAACAGACCCACGATTTCTGCATATTCGACTATGGGAACCGCTACCATCTACGCTGTACA  
 TGTACCAGGCCCGGACCTGGCTGCGATGGACAAGGACTCTTTTTCTGATCCCTATGCCATCGTCTCCTT  
 CCTGCACCAGAGCCAGAAGACGGTGGTGGTGAAGAACCCTTAACCCACCTGGGACCAGACGCTCATC  
 TTCTACGAGATCGAGATCTTTGGCGAGCCGGCCACAGTTGCTGAGCAACCGCCAGCATTGTGGTGGAGC  
 TGACGACCATGACACTTATGGTGCAGAGGATTTATGGGTGCTGCATCTGTCAACCGAGTCTGGAACG  
 GATGCCACGGCTGGCCTGGTCCCACTGACGAGGGGACGACCCGCTCGGGGAGCTGCTGGCCTCTTTT  
 GAGCTCATCCAGAGAGAGAAGCCGGCCATCCACCATATTCCTGGTTTTGAGGTGCAGGAGACATCAAGGA  
 TCCTGGATGAGTCTGAGGACACAGACCTGCCCTACCCACCACCCAGAGGGAGGCCAACATCTACATGGT  
 TCCTCAGAACATCAAGCCAGCGCTCCAGCGTACCGCCATCGAGATCCTGGCATGGGGCCTGCGGAACATG  
 AAGAGTTACCAGCTGGCCAACATCTCTCCCCAGCCTCGTGGTAGAGTGTGGGGCCAGACGGTGCAGT  
 CCTGTGTCATCAGGAACCTCCGGAAGAACCCTTGGATCTGCACCCTCTCATGGAAGTGTGCT  
 GCCCAGGGAGGAGCTCTACTCCCCCCTCACCGTCAAGTCAATCGATAAACCAGTCTGGCCGCGG  
 CCTGTGGTGGGCCAGTGTACCATCCGCTCCCTGGAGAGCTTCTGTGTGACCCCTACTCGGCGGAGAGTC  
 CATCCCCACAGGGTGGCCAGACGATGTGAGCCTACTCAGTCTGGGGAAGACGTGCTCATCGACATTGA  
 TGACAAGGAGCCCTCATCCCCATCCAGGAGGAAGAGTTCATCGATTGGTGGAGCAAATCTTTGCTCC  
 ATAGGGGAGAGGGAAAAGTGGGCTCCTACCTGGAGAAGGATTTTACACCCTGAAGGTCTATGACACAC  
 AGCTGGAGAATGTGGAGGCTTTGAGGGCTGTCTGACTTTTGTAAACCTTCAAGCTGTACCGGGCAA  
 GACGCAGGAGGAGACAGAAGATCCATCTGTGATTGGTGAATTTAAGGGCCTTTCAAATTTATCCCTC  
 CCAGAAGACCCAGCCATCCCCATGCCCAAGACAGTTCACCAGCTGGCCGCCAGGGACCCAGGAGT  
 GCTTGGTCCGTATCTACATTGTCCGAGCATTGGCCTGCAGCCCAAGGACCCCAATGGAAGTGTGATCC  
 TTACATCAAGATCTCCATAGGGAAGAAATCAGTGAAGTACCAGGATAACTACATCCCTGCACGCTGGAG  
 CCCGATTTTGAAGATGTTTCGAGCTGACCTGCACTCTGCCTCTGGAGAAGGACCTAAAGATCACTCTCT  
 ATGACTATGACCTCCTCTCCAAGGACGAAAAGATCGGTGAGACGGTGTGACCTGGAGAACAGGCTGCT  
 GTCCAAGTTTGGGGCTCGCTGTGGACTCCACAGACCTACTGTGTCTTGGACCGAACAGTGGCGGGAC  
 CAGCTCCGCCCTCCAGCTCCTCCACCTCTTCTGCCAGCAGCATAGAGTCAAGGACCTGTGTACCGGA

CAGACCGTGAATGTTTCAGGATAAAGAATATTCCATTGAAGAGATAGAGGCTGGCAGGATCCCAAACCC  
ACACCTGGGCCAGTGGAGGAGCGTCTGGCTCTGCATGTGCTTCAGCAGCAGGGCCTGGTCCCGGAGCAC  
GTGGAGTCACGGCCCTCTACAGCCCCCTGCAGCCAGACATCGAGCAGGGGAAGCTGCAGATGTGGGTCG  
ACCTATTTCCGAAGGCCCTGGGGCGCCCTGGACCTCCCTTCAACATCACCCACGGAGAGCCAGAAGGTT  
TTTCTGCGTTGTATTATCTGGAATACCAGAGATGTGATCCTGGATGACCTGAGCCTCACGGGGAGAAG  
ATGAGCGACATTTATGTGAAAGGTTGGATGATTGGCTTTGAAGAACACAAGCAAAAGACAGACGTGCATT  
ATCGTTCCCTGGGAGGTGAAGGCAACTTCAACTGGAGGTTCAATTTCCCTTCGACTACCTGCCAGCTGA  
GCAAGTCTGTACCATTGCCAAGAAGGATGCCTTCTGGAGGCTGGACAAGACTGAGAGCAAAATCCCAGCA  
CGAGTGGTGTTCAGATCTGGGACAATGACAAGTTCTCCTTTGATGATTTTCTGGGCTCCCTGCAGCTCG  
ATCTCAACCGCATGCCAAGCCAGCCAAGACAGCCAAGAAGTGCTCCTTGGACCAGCTGGATGATGCTTT  
CCACCCAGAATGGTTTGTGTCCCTTTTGGAGCAGAAAACAGTGAAGGGCTGGTGGCCCTGTGTAGCAGAA  
GAGGGTGAGAAGAAAATACTGGCGGGCAAGCTGGAATGACCTTGGAGATTGTAGCAGAGAGTGAGCATG  
AGGAGCGGCTGTGGCCAGGGCCGGGATGAGCCAACATGAACCCTAAGCTTGAGGACCAAGGGCCCC  
CGACACCTCCTTCTGTGGTTTACCTCCCATAACAAGACCATGAAGTTCATCCTGTGGCGGCTTTCCGG  
TGGGCCATCATCCTTTCATCATCCTTTCATCCTGCTGCTGTTCTGGCCATCTTCATCTACGCCTTCC  
CGAACTATGCTGCCATGAAGCTGGTGAAGCCCTTCAGC

ACGCGTACGCGGCCGCTCGAG – GFP Tag – GTTTAA

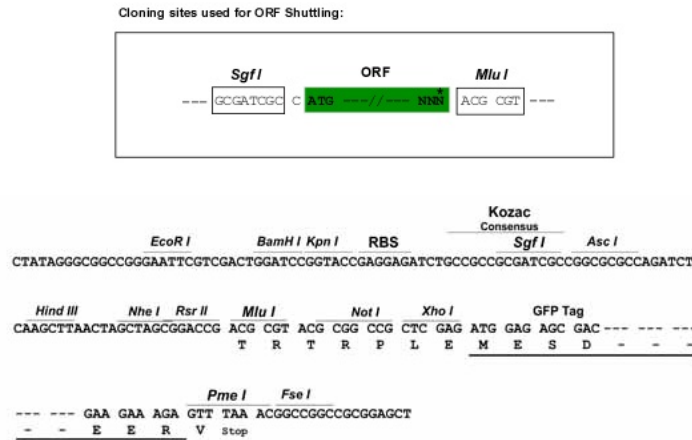
**Protein Sequence:** >RG226441 representing NM\_001130976  
 Red=Cloning site Green=Tags(s)

```
MLRVFILYAENVHTPDTDISDAYCSAVFAGVKKRTRKVIKNSVNPVWNEGFWDLKGIPLDQGSSELHVVVK
DHETMGRNRFLGEAKVPLREVLATPSLSASFNAPLLDTKKQPTGASLVLQVSYTLPFGAVPLFPPPTPLE
PSPTLPDLDDVADTGGEEEDTQGLTGDEAEPFLDQSGGPGAPTTPRKLPSRPPPHYPGIKRRKSAPTSR
KLLSDKPQDFQIRVQVIEGRQLPGVNIKPVVKVTAAGQTKRTRIHKGNSPLFNETLFFNFLDSPGELFDE
PIFITVVDSSRLRTDALLGEFRMDVGTIYREPRHAYLRKWL L LSDPDDFSAGARGYLKTSCLVLPDGPDEA
PLERKDPSEDKEDIESNLLRPTGVALRGAHFCLKVFRAEDLPQMDDAVMDNVKQIFGFESNKNLVDPFV
EVSFAGKMLCSKILEKTANPQWNQITLPAFPMCEKMRIRIIDWDR L THNDIVATTYLSMSKISAPGG
EIEVDDYLGF LPTFGPCYINLYGSPRETFGFPDPYTELNTGKGEVAYRGR L L L SLETKLVEHSEQKVED
LPADDILRVEKYLRRRKYSLFAAFYSATMLQDVEDAIQFEVSIGNYGNKFDMTCLPLASTQYSRAVFDG
CHYYYPWGNV KPVVVLSSYWEDISHRIETQNQLLGIADRLEAGLEQVHLALKAQCSTEDVDSLVAQLTD
ELIAGCSQPLGDIHETPSATHLDQYLQLRTHHL SQITEAALALKLGHSELPAALQAEDWLLRLRALAE
EPQNSLPDIVIWM LQGDKRVAYQRVPAHQVLF SRRGANYCGKNCGKLQTI FLKYPMEKVPGARMPVQIRV
KLWFGLSVDEKEFNQFAEGKLSVFAETYENETKLALVGNWGT TGLTYPKFS DVTGKIKLPKDSFRPSAGW
TWAGDWFVCP EKTLLHMDAGHLSFVEEVFENQTR L PGGQWIYMSDNYTDVNGEKVLPKDDIECPLGKW
EDEEWSTDLNRAVDEQGW EYSITIPPERKPKHWVPAEKMYTHRRRRWR L RRRDL SQMEALKRHRQAEA
EGEGWEYASLFGWK FHLEYRKTDAFRRRRWR RRRMEPLEKTGPAAVFALEGALGGVMDKSEDSMSVSTLS
FGVNRPTISCI FIDYGNRYHLRCYMYQARDAAMDKDSFSDPYAIVSFLHQSQKT VVVKNTLNPTWDQTLI
FYEIEIFGEPATVAEQPPSIVVELYDHDTYGADEFMGRCICQPSLERMPRLAWFPLTRGSQPSGELLASF
ELIQREKPAIH H IHPGFVQETSRI L DESED TDL PYP P P QREANIYMPQNIK PALQRTAIEILAWGLRNM
KSYQLANISSPSLVVECGGQTVQSCVIRNLRKNPNFDICTLFMEVMLPREEL YCPPITVKVIDNRQFGR
PVVVGQCTIRSLESFLCDPYSAESPSPQGGPDDV SLLSPGEDVLIDIDDKEPLIPIQE EEFIDWWSKFFAS
IGEREKCGSYLEKDFDTLKVYDTQLENVEAF EGLSDFCNTFKLYRGTQEETEDPSVIGEFKGLFKIYPL
PEDPAIPMPPRQFHQLAAQGPQECLVRIYIVRAFGLQPKDPNGKCDPYIKISIGKKSVDQDNYIPCTLE
PVFGKMFELTCTLPLEKDLKITLYDYDLLSKDEKIGETVVDLENRLLSKFGARCGLPQTYCVSGPNQWRD
QLRPSQLLHLFCQQHRVKAPVYRTDRVMFQDKEYSIEEIEAGRIPNPHLGPVEERLALHVLQQQGLVPEH
VESRPLYSPLQPDIEQGLQM WVDLFPKALGRPGPPFNITPRRARRFFLR CI IWNTRDVILDDLSTG EK
MSDIYVKGWMIGFEEHKQKTDVHYRSLGGEGNFNWR FIFPFDYLP AEQVCTI AKKDAFWRLDKTESKIPA
RVVFQIWDNDKFSFDDFLGSLQLDLNRMPKPAKTAKKCSLDQLDDAFHPEWVSLFEQKT VKGW WPCVAE
EGEKKILAGKLEMTLEIVA ESEHEERPAGQGRDEPNMNPKLEDRRPDTSFLWFTSPYKTMKFI L WRRFR
WAIILFIILFILLFLAIF IYAFPNYAAMKLVKPF S
```

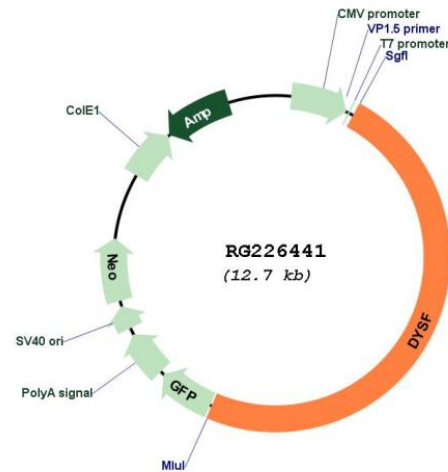
TRTRPLE - GFP Tag - V

**Restriction Sites:** SgfI-MluI

Cloning Scheme:



Plasmid Map:



ACCN: NM\_001130976

ORF Size: 6198 bp

OTI Disclaimer: The molecular sequence of this clone aligns with the gene accession number as a point of reference only. However, individual transcript sequences of the same gene can differ through naturally occurring variations (e.g. polymorphisms), each with its own valid existence. This clone is substantially in agreement with the reference, but a complete review of all prevailing variants is recommended prior to use. [More info](#)

OTI Annotation: This clone was engineered to express the complete ORF with an expression tag. Expression varies depending on the nature of the gene.

<b>Components:</b>	The ORF clone is ion-exchange column purified and shipped in a 2D barcoded Matrix tube containing 10ug of transfection-ready, dried plasmid DNA (reconstitute with 100 ul of water).
<b>Reconstitution Method:</b>	<ol style="list-style-type: none"><li>1. Centrifuge at 5,000xg for 5min.</li><li>2. Carefully open the tube and add 100ul of sterile water to dissolve the DNA.</li><li>3. Close the tube and incubate for 10 minutes at room temperature.</li><li>4. Briefly vortex the tube and then do a quick spin (less than 5000xg) to concentrate the liquid at the bottom.</li><li>5. Store the suspended plasmid at -20°C. The DNA is stable for at least one year from date of shipping when stored at -20°C.</li></ol>
<b>RefSeq:</b>	<a href="#">NM_001130976.2</a>
<b>RefSeq Size:</b>	6848 bp
<b>RefSeq ORF:</b>	6201 bp
<b>Locus ID:</b>	8291
<b>UniProt ID:</b>	<a href="#">O75923</a>
<b>Cytogenetics:</b>	2p13.2
<b>Protein Families:</b>	Transmembrane
<b>Gene Summary:</b>	The protein encoded by this gene belongs to the ferlin family and is a skeletal muscle protein found associated with the sarcolemma. It is involved in muscle contraction and contains C2 domains that play a role in calcium-mediated membrane fusion events, suggesting that it may be involved in membrane regeneration and repair. In addition, the protein encoded by this gene binds caveolin-3, a skeletal muscle membrane protein which is important in the formation of caveolae. Specific mutations in this gene have been shown to cause autosomal recessive limb girdle muscular dystrophy type 2B (LGMD2B) as well as Miyoshi myopathy. Alternative splicing results in multiple transcript variants. [provided by RefSeq, Aug 2008]