

Product datasheet for **RG226434**

Laminin alpha 4 (LAMA4) (NM_001105206) Human Tagged ORF Clone

Product data:

Product Type:	Expression Plasmids
Product Name:	Laminin alpha 4 (LAMA4) (NM_001105206) Human Tagged ORF Clone
Tag:	TurboGFP
Symbol:	LAMA4
Synonyms:	CMD1Jj; LAMA3; LAMA4*-1
Mammalian Cell Selection:	Neomycin
Vector:	pCMV6-AC-GFP (PS100010)
E. coli Selection:	Ampicillin (100 ug/mL)
ORF Nucleotide Sequence:	>RG226434 representing NM_001105206 Red=Cloning site Blue=ORF Green=Tags(s)

TTTTGTAATACGACTCACTATAGGGCGGCCGGAATTCGTCGACTGGATCCGGTACCGAGGAGATCTGCC
GCC**CGATCGCC**

ATGGCTTTGAGCTCAGCCTGGCGCTCGGTTCTGCCTCTGTGGCTCCTCTGGAGCGCTGCCTGCTCCCGC
CCGCGTCCGGGACGACAACGCTTTTCTTTTGACATTGAAGGGAGCTCAGCGTTGGCAGGCAAGACCC
GCCTGAGACGAGCGAACCCCGCTGGCTCTGGGACGCTGCCGCTCGGCGGAGAAATGCAATGCTGGA
TTCTTTCACACCCTGTGGGAGAATGTGTGCCCTGCGACTGTAATGGCAATTCACAGAGTGTGGACG
GCTCAGGATACTGTGTGACTGCCAGCGGAACACAACAGGAGAGCACTGTGAAAAGTGTCTGGATGGTTA
TATCGGAGATTCCATCAGGGGAGCACCCCAATTCTGCCAGCCGTGCCCTGTCCCCTGCCCACTTGCC
AATTTTGCAGAATCCTGTATAGGAAAAATGGAGCTGTTTCGGTGCATTTGTAACGAAAAATTATGCTGGAC
CTAACTGTGAAAGATGTGCTCCCGGTTACTATGAAAAACCCCTTACTCATTGGAAGCACCTGTAAGAAATG
TGACTGCAGTGGAAATTCAGATCCCAACCTGATCTTTGAAGATTGTGATGAAGTCACTGGCCAGTGTAGG
AATTGCTTACGCAACACCACCGGATTCAAGTGTGAACGTTGCGCTCCTGGCTACTATGGGACGCCAGGA
TAGCCAAGAACTGTGCAGTGTGCAACTGCGGGGAGGCCCATGTGACAGTGAACCGGAGAATGCTTGA
AGAAGTTTTGAACCCCTACAGGCATGGACTGCCCAACCATAAGCTGTGATAAGTGCCTGTTGGACCTG
ACTGATGCAGTGGGTTAGCAGCGCTCTCCATCGAGGAAGGCAAATCCGGGGTGTGAGCGTATCCTCTG
GGCCCGCTCATAGGCAGTGAATGAAATCAACGCCACCATCTACCTCTCAAAAACAAAATTTGTCAGA
AAGAGAAAACCAATACGCCCTAAGAAAGATACAAATCAACAATGTGAGAACACGATGAAAAGCCTTCTG
TCTGACGTAGAGGAATTAGTTGAAAAGGAAAATCAAGCCTCCAGAAAAGGACAACCTGTTGAGAAGGAAA
GCATGGACACCATTAACCACGCAAGTCACTGGTAGAGCAAGCCCATGATATGAGGGATAAAATCCAAGA
GATCAACAACAAGATGCTCTATTATGGGAAGAGCATGAACTTAGCCCAAGGAAATCTCTGAGAAGCTG
GTGTTGGCCAGAAGATGCTTGAAGAGATTAGAAGCCGTCAACCATTTTTACCCAACGGGAGCTCGTGG
ATGAGGAGGCAGATGAGGCTTACGAACTACTGAGCCAGGCTGAGAGCTGGCAGCGCTGCACAATGAGAC
CCGCACTCTGTTCTGTCGTCCTGGAGCAGCTGGATGACTACAATGCTAAGTTGTCAGATCTCCAGGAA



[View online »](#)

GCACTTGACCAGGCCCTAACTATGTCAGGGATGCCGAAGACATGAACAGGGCCACAGCAGCCAGGCAGC
 GGGACCATGAGAAACAACAGGAAAGAGTGAGGGAACAAATGGAAGTGGTGAACATGTCTCTGAGCACATC
 TGCGGACTCTCTGACAACACCTCGTCTAACTCTTTCAGAACTTGATGATATAATAAAGAATGCGTCAGGG
 ATTTATGCAGAAATAGATGGAGCCAAAAGTGAACACAGTAAAACATCTAACCTAAGTAACTCAGCC
 ATGATTTAGTCCAAGAAGCTATTGACCATGCACAGGACCTTCAACAAGAAGCTAATGAATTGAGCAGGAA
 GTTGCACAGTTCCAGATATGAACGGGCTGGTACAGAAGGCTTTGGATGCATCAAATGTCTATGAAAAATTT
 GTTAATTTAGTGAAGCCAATGAAACAGCAGAAATTTGCTTTGAACACCACTGACCCGAATTTATGATG
 CGGTGAGTGGGATTGATACTCAAATCATTACCATAAAGATGAAAGTGAGAACCTCTCAATCAAGCCAG
 AGAACTGCAAGCAAAGGCAGAGTCTAGCAGTGTGAAGCAGTGGCTGACACTAGCAGGCGTGTGGGTGGA
 GCCCTAGCAAGGAAAAGTGCCCTTAAAACCAGACTCAGTGATGCCGTTAAGCAACTACAAGCAGCAGAGA
 GAGGGGATGCCAGCAGCGCCTGGGGCAGTCTAGACTGATCACCGAGGAAGCCAACAGGACGACGATGGA
 GGTGCAGCAGGCCACTGCCCCATGGCCAACAATCTAACCACTGGTACAGAACTCTCAACATTTTGAC
 TCTTCTGCTTACAACACTGCAGTGAACCTGCTAGGGATGCAGTAAGAAATCTGACCGAGGTTGCCCTC
 AGCTCCTGGATCAGCTTCGTACGGTTGAGCAGAAGCGACCTGCAAGCAACGTTTCTGCCAGCATCCAGAG
 GATCCGAGAGCTCATTGCTCAGACCAGAAGTGTGCCAGCAAGATCCAAGTCTCCATGATGTTTGTATGGC
 CAGTCAGCTGTGGAAGTGCACCTCGAGAACCAGTATGGATGACTTAAAGGCCCTTACGTCCTGAGCCTGT
 ACATGAAACCCCTGTGAAGCGGCCGAACTGACCGAGACTGCAGATCAGTTTATCCTGTACCTCGGAAG
 CAAAAACGCCAAAAAGAGTATATGGGTCTTGAATCAAAAAATGATAATCTGGTATACGTCTATAATTTG
 GAACTAAAGATGTGGAGATCCCTGGACTCCAAGCCGTCAGTTTCTGGCCTGCTTACTTCAGCATTG
 TCAAGATTGAAAGGGTGGGAAAACATGGAAGGTGTTTTAACAGTCCCGAGTCTAAGTAGCACAGCAGA
 GGAAAAGTTCATTAAGGGGGGAAATTTTCGGGAGATGACTCTCTGCTGGACCTGGACCTGAGGACACA
 GTGTTTTATGTTGGTGGAGTGCCTTCAACTTCAAGCTCCCTACCAGCTTAAACCTGCCTGGCTTTGTTG
 GTACCTGGAAGTGGCCACTTTGAATAATGATGTGATCAGCTTGTACAACCTTAAAGCACATCTATAATAT
 GGACCCCTCCACATCAGTGCCATGTGCCGAGATAAGCTGGCCTTCACTCAGAGTCGGGCTGCCAGTTAC
 TTCTTCGATGGCTCCGGTTATGCCGTGGTGAAGACATCAACAAGGAGAGGGAAAATTTGGTCAAGTGACTC
 GCTTTGACATAGAAGTTCGAACACCAGCTGACAACGGCCTTATTCTCCTGATGGTCAATGGAAGTATGTT
 TTTGACTGGAATGCGCAATGGTTACCTACATGTGTTCTATGATTTTGGATTGAGCGGTGCCCTGTG
 CATCTTGAAGATACGTTAAAGAAAGCTCAAATTAATGATGCAAAATACCATGAGATCTCAATCATTACC
 ACAATGATAAGAAAATGATCTTGGTAGTTGACAGAAGGCATGTCAAGAGCATGGATAATGAAAAGATGAA
 AATACCTTTACAGATATACATTGGAGGAGCTCCTCCAGAAATCTTACAATCCAGGGCCCTCAGAGCA
 CACCTTCCCTAGATATCAACTCAGAGGATGCATGAAGGGCTTCCAGTCCAAAAGAAGGACTTCAATT
 TACTGGAGCAGACAGAAACCCTGGGAGTTGGTTATGGATGCCAGAAAGACTCACTTATATCTCGCAGAGC
 ATATTTCAATGGACAGAGCTTATTGCTTCAATTCAGAAAATATCTTTCTTTGATGGCTTTGAAGGAGGT
 TTTAATTTCCGAACATTACAACCAATGGGTTACTATTCTATTATGCTTCAGGGTCAGACGTGTTCTCCA
 TCTCACTGGATAATGGTACTGTCATCATGGATGTAAAGGGAAATCAAAGTTCAGTCAGTAGATAAGCAGTA
 CAATGATGGGCTGTCCCCTTCTCATTAGCTCTGTCTCACCCACAAGATATGAACTGATAGTAGATAAA
 AGCAGAGTTGGGAGTAAAGATCTACCAAGGGGAAAATAGAACAGACACAAGCAAGTGAAGAAAGTTTTT
 ACTTCGGTGGCTACCAATCAGTGCTCAGTATGCTAATTTCACTGGCTGCATAAGTAATGCCTACTTTAC
 CAGGGTGGATAGAGATGTGGAGGTTGAAGATTTCAACGGTATACTGAAAAGTCCACACTTCTCTTTAT
 GAGTGTCCCATGAGTCTTACCATTGTTTCTCCTCCATAAAAAAGGAAAAAATTTATCCAAGCCTAAAG
 CAAGTCAGAATAAAAAAGGAGGGAAAAGTAAAGATGCACCTTCATGGGATCCTGTTGCTCTGAAACTCCC
 AGAGCGGAATACTCCAAGAACTCTCATTGCCACCTTTCCAACAGCCCTAGAGCAATAGAGCAGCCCTAT
 CAATATGGAGGAACAGCCAACAGCCGCAAGAGTTTGAACACTTAAAAGGAGATTTTGGTCCAAATCTC
 AGTTTTCCATTCTGCTGAGAAGTCTTCTCCATGGCATGATCTTCTATGTCTCAGATCAAGAAGAGAA
 TGACTTCATGACTCTATTTTGGCCATGGCCGCTTGGTTTACATGTTTAAATGTTGGTCACAAAAAACTG
 AAGATTAGAAGCCAGGAGAAAATACAATGATGGCCTGTGGCATGATGTGATATTTATCGAGAAAGGAGCA
 GTGGCCGACTGGTAATTGATGGTCTCCGAGTCTAGAAGAAAGTCTTCTCCTACTGAAGCTACCTGGAA
 AATCAAGGGTCCCATTTATTTGGGAGGTGTGGCTCCTGGAAGGGCTGTGAAAAATGTTTCAAGTAACTCC
 ATCTACAGTTTTAGTGGCTGTCTCAGCAATCTCCAGCTCAATGGGGCTCCATCACCTCTGCTTCTCAGA
 CATTCAAGTGTGACCCCTTGTCTTGAAGGCCCATGGAAACAGGAACTTACTTTTCAACAGAAGGAGGATA
 CGTGGTTCTAGATGAATCTTTCAATATTGGATTGAAGTTTGAATTTGCAATTTGAAGTCCGTCAGGAAAGC
 AGTTCGGAAACCCTGGTCCACGGCCACAGTGTCAATGGGAGTACCTAAATGTTTCAATGAAAAATGGAC

AGGTCATAGTGAAAGTCAATAATGGCATCAGAGATTTTTCCACCTCAGTTACACCAAGCAGAGTCTCTG
 TGATGGCAGATGGCACAGAATTACAGTTATTAGAGATTCTAATGTGGTTCAGTTGGATGTGGACTCTGAA
 GTGAACCATGTGGTTGGACCCCTGAATCCAAAACCAATTGATCACAGGGAGCCTGTGTTTGTGGAGGTG
 TTCCAGAATCTCTACTGACACCACGCTTGGCCCCAGCAAACCC TTCACAGGCTGCATACGCCACCTTGT
 GATTGATGGACACCCAGTGAGCTTCAGTAAAGCAGCCCTGGTCAGCGGCGCCGTAAGCATCAACTCTGT
 CCAGCAGCC

ACGCGTACGCGGCCGCTCGAG - GFP Tag - GTTTAA

Protein Sequence:

>RG226434 representing NM_001105206
 Red=Cloning site Green=Tags(s)

MALSSAWRSVLPWLWLSAACSRAASGDDNAPFPDIEGSSAVGRQDPETSEPRVALGRLPPAAEKCNA
 FFHTLSGECVPCDCNGNSNECLDGSYCVHCQRNTTGEHCEKCLDGYIGDSIRGAPQFCQPCPCPLPHLA
 NFAESCYRKNGAVRCICNENYAGPNCERCAPGYGNPLLI GSTCKKDCSGNSDPNLIFEDCDEVTGQCR
 NCLRNTTGFKCERCAPGYGDARIKNCVNCGGGPCDSVTGECEEGFEPPTGMDCTIISCDKCVWDL
 TDALRLAALSIEEGKSGVLVSSGAAHRHVNEINATIYLLKTKL SERENQYALRKIQINNAENTMKSLL
 SDVEELVEKENQASRKQQLVQKESMDTINHASQLVEQAHDMDRKIQEINNKM LYGEEHELSPKEISEKL
 VLAQKMLEEIRSRQPFPTQREL VDEEADAEYELL SQAESWQRLHNETRTLFPVVLEQLDDYNAKLSDLQE
 ALDQALNYVRDAEDMNRATAARQRDHEKQQERVREQMEVVMNSLSTSADSLTTPRLTSELDDI IKNASG
 IYAEIDGAKSELQVKLSNL SNL SHDLVQE AIDHAQDLQQEANELSRKLSHSDMNGLVQKALDASNVYENI
 VNYVSEANETAEFALNTTDRIYDAVSGIDTQIIYHKDESENLLNQARELQAKAESSDEAVADTSRRVGG
 ALARKSALKTRLSDAVKQLQAAERGDQQRLGQSRLITEANRTTMEVQATAPMANNLTNWSQNLQHF
 SSAYNTAVNSARDAVRNLTEVVPQLLDQLRTVEQKRPASNVSASIQRIRELI AQTRSVASKIQVSMF
 QSAVEVHRTSMDLKAFTSLSLYMKPPVKRPELTETADQF ILYLGSKNAKKEYMGLAIKNDNLVYVY
 GTKDVEIPLDSKPVSSWPAYFSIVKIERVKGKGVFLTVPSLSSTAEKFIKKGEFSGDSDLLDLPEDT
 VFYVGGVPSNFKLPTSLNLPGFVGCLELALNNDV I SLYNFKHIYNMDPSTSVPCARDKLAFTQSRAAS
 YFFDGSYAVVRDITRRGKFGQVTRFDIEVRTPADNGL ILLMVNGSMFFRLEMNGYLHVFYDFGSGGPV
 HLEDTLKKAQINDAKYHEISIIYHNDKKMILVDRRHVKSM DNEKMKIPFTDIYIGGAPPEILQSRALRA
 HLPLDINFRGCMKGFQFQKDFNLL EQTETLGVGYGCPEDSLISRRAYFNGQSF IASIQKISFFDGFEGG
 FNFRTLQPNGLLFYYASGSDVFSISLDNGTVIMDVKG I K VQSVDKQYNDGLSHFV I SSVSPTRYELIVDK
 SRVGSKNPTKGI EQTQASEKFFYGGSPISAQYANFTG C I SNAYFTRVDRDVEVEDFQRYTEKVHTSLY
 ECP IESSPLFLLHKKGKNLSKPKASQNKKGKSKDAPSWDPVALKLPERNTPRNSHCHLSNSPRAIEHAY
 QYGGTANSRQEF EHLKGF GAKSQFSIRLRTRSSHGMIFVYSDQEENDFMTLFLAHGRLVYMFNVGHKLL
 KIRSQEKYNDGLWHDVIFIRERSGRLVIDGLRVLEESLPPEATWKIKGPIYLGAVAPGKAVKNVQINS
 IYSFSGCLSNLQNGASITSASQTF SVTPCFEGPMETGT YFSTEGGYVVLDESFNIGLKFEIAFEVRPRS
 SSGTLVHGHSVNGEYLVNVMKNGQVIKVNNGIRDFSTSVTPKQSLCDGRWHRITVIRDSNVVQLD VDSE
 VNHVVGPLNPKPIDHREPVFVGGVPESLLTPRLAPSKPFTGCIRHFVIDGHPVSF SKAALVSGAVSINSC
 PAA

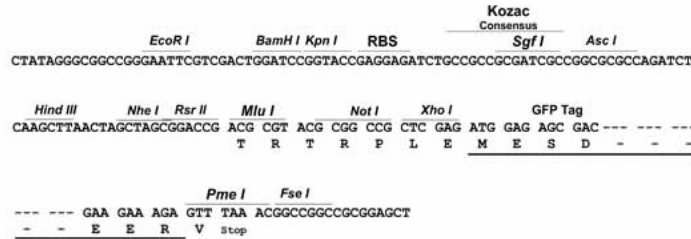
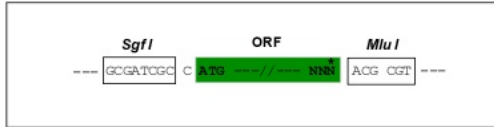
TRTRPLE - GFP Tag - V

Restriction Sites:

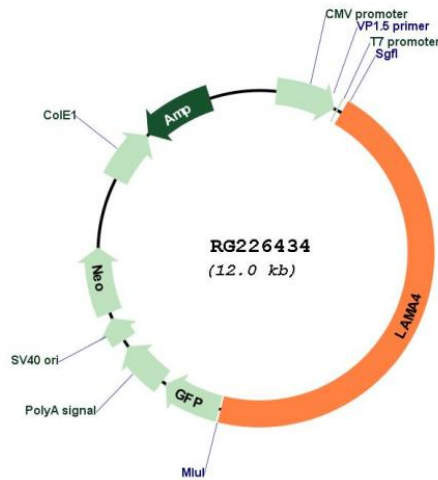
Sgfl-MluI

Cloning Scheme:

Cloning sites used for ORF Shutting:



Plasmid Map:



ACCN: NM_001105206

ORF Size: 5469 bp

OTI Disclaimer:	The molecular sequence of this clone aligns with the gene accession number as a point of reference only. However, individual transcript sequences of the same gene can differ through naturally occurring variations (e.g. polymorphisms), each with its own valid existence. This clone is substantially in agreement with the reference, but a complete review of all prevailing variants is recommended prior to use. More info
OTI Annotation:	This clone was engineered to express the complete ORF with an expression tag. Expression varies depending on the nature of the gene.
Components:	The ORF clone is ion-exchange column purified and shipped in a 2D barcoded Matrix tube containing 10ug of transfection-ready, dried plasmid DNA (reconstitute with 100 ul of water).
Reconstitution Method:	<ol style="list-style-type: none">1. Centrifuge at 5,000xg for 5min.2. Carefully open the tube and add 100ul of sterile water to dissolve the DNA.3. Close the tube and incubate for 10 minutes at room temperature.4. Briefly vortex the tube and then do a quick spin (less than 5000xg) to concentrate the liquid at the bottom.5. Store the suspended plasmid at -20°C. The DNA is stable for at least one year from date of shipping when stored at -20°C.
RefSeq:	NM_001105206.1 , NP_001098676.1
RefSeq Size:	7287 bp
RefSeq ORF:	5472 bp
Locus ID:	3910
UniProt ID:	Q16363
Cytogenetics:	6q21
Protein Families:	Druggable Genome, Secreted Protein
Protein Pathways:	ECM-receptor interaction, Focal adhesion, Pathways in cancer, Small cell lung cancer

Gene Summary:

Laminins, a family of extracellular matrix glycoproteins, are the major noncollagenous constituent of basement membranes. They have been implicated in a wide variety of biological processes including cell adhesion, differentiation, migration, signaling, neurite outgrowth and metastasis. Laminins are composed of 3 non identical chains: laminin alpha, beta and gamma (formerly A, B1, and B2, respectively) and they form a cruciform structure consisting of 3 short arms, each formed by a different chain, and a long arm composed of all 3 chains. Each laminin chain is a multidomain protein encoded by a distinct gene. Several isoforms of each chain have been described. Different alpha, beta and gamma chain isomers combine to give rise to different heterotrimeric laminin isoforms which are designated by Arabic numerals in the order of their discovery, i.e. alpha1beta1gamma1 heterotrimer is laminin 1. The biological functions of the different chains and trimer molecules are largely unknown, but some of the chains have been shown to differ with respect to their tissue distribution, presumably reflecting diverse functions in vivo. This gene encodes the alpha chain isoform laminin, alpha 4. The domain structure of alpha 4 is similar to that of alpha 3, both of which resemble truncated versions of alpha 1 and alpha 2, in that approximately 1,200 residues at the N-terminus (domains IV, V and VI) have been lost. Laminin, alpha 4 contains the C-terminal G domain which distinguishes all alpha chains from the beta and gamma chains. The RNA analysis from adult and fetal tissues revealed developmental regulation of expression, however, the exact function of laminin, alpha 4 is not known. Tissue-specific utilization of alternative polyA-signal has been described in literature. Alternative splicing results in multiple transcript variants encoding distinct isoforms. [provided by RefSeq, Aug 2011]