

Product datasheet for **RG226431**

Tuberin (TSC2) (NM_001114382) Human Tagged ORF Clone

Product data:

Product Type:	Expression Plasmids
Product Name:	Tuberin (TSC2) (NM_001114382) Human Tagged ORF Clone
Tag:	TurboGFP
Symbol:	TSC2
Synonyms:	LAM; PPP1R160; TSC4
Mammalian Cell Selection:	Neomycin
Vector:	pCMV6-AC-GFP (PS100010)
E. coli Selection:	Ampicillin (100 ug/mL)
ORF Nucleotide Sequence:	>RG226431 representing NM_001114382 Red=Cloning site Blue=ORF Green=Tags(s)

CTATAGGGCGGCCGGAATTTCGTGCGACTGGATCCGGTACCGAGGAGATCTGCC
GCC**CGATCGCC**

ATGGCCAAACCAACAAGCAAAGATTCAGGCTTGAAGGAGAAGTTAAGATTCTGTTGGGACTGGGAACAC
CGAGGCCAAATCCAGGTCTGCAGAGGGTAAACAGACGGAGTTTATCATCACCGCGAAATACTGAGAGA
ACTGAGCATGGAATGTGGCTCAACAATCGCATCCGGATGATAGGGCAGATTTGTGAAGTCGAAAAACC
AAGAAATTTGAAGAGCACGCAGTGAAGCACTCTGGAAGGCGGTGCGGGATCTGTTGCAGCCGGAGCGGC
CGCTGGAGGCCCGCACGCGGTGCTGGCTCTGCTGAAGGCCATCGTGCAGGGGCAGGGCAGCGTTTGGG
GGTCTCAGAGCCCTCTTCTTAAAGTCAAGGATTACCTTCCAACGAAGACCTTACGAAAGGCTG
GAGTTTTCAAGGCCCTCACAGACAATGGGAGACACATCACCTACTTGGAGGAAGAGCTGGCTGACTTTG
TCCTGCAGTGGATGGATGTTGGCTTGTCCCTCGAATTCCTTCTGGTGTGGTGAACCTGGTCAAATCAA
TAGCTGTTACCTCGACGAGTACATCGCAAGGATGGTTCAGATGATCTGTCTGCTGTGCGTCCGGACCCGG
TCCTCTGTGGACATAGAGGTCTCCCTGCAGGTGCTGGACGCCGTGGTCTGCTACAACCTGCCGCGCTG
AGAGCCTCCCGTGTTCATCGTTACCCTCTGTGCGACCATCAACGTCGAAGGAGCTCTGCGAGCCTTGCTG
GAAGCTGATGCGGAACCTCCTTGGCACCCACCTGGGCCACAGCGCCATCTACAACATGTGCCACCTCATG
GAGGACAGAGCCTACATGGAGGACGCGCCCTGCTGAGAGGAGCCGTGTTTTTTGTGGCATGGCTCTCT
GGGAGCCACCGGCTCTATTCTCTCAGGAACTCGCCGACATCTGTGTTGCCATCATTTTACCAGGCCAT
GGCATGTCCGAACGAGGTGGTGTCTATGAGATCGTCCTGTCCATCACAGGCTCATCAAGAAGTATAGG
AAGGAGCTCCAGGTGGTGGCGTGGGACATTCTGCTGAACATCATCGAACGGCTCCTTACGAGCTCCAGA
CCTTGGACAGCCCGGAGCTCAGGACCATCGTCCATGACCTGTTGACCACGGTGGAGGAGCTGTGTGACCA
GAACGAGTTCCACGGGTCTCAGGAGAGATACTTTGAACTGGTGGAGAGATGTGCGGACCAGAGCCCTGAG
TCCTCCCTCTGAACCTGATCTCTATAGAGCGCAGTCCATCCACCCGGCCAAGGACGGCTGGATTGAG
ACCTGCAGGCGCTGATGGAGAGATTCTCAGGAGCGAGTCCCAGGCGCCGTGCGCATCAAGGTGCTGGA
CGTGTCTCTTTGTGCTGCTCATCAACAGGCAGTTCTATGAGGAGGAGCTGATTAACCTAGTGGTTCATC



[View online »](#)

TCGCAGCTCTCCACATCCCCGAGGATAAAGACCACCAGGTCCGAAAGCTGGCCACCCAGTTGCTGGTGG
 ACCTGGCAGAGGGCTGCCACACACACCCTTCAACAGCCTGCTGGACATCATCGAGAAGGTGATGGCCCC
 CTCCCTCTCCCCACCCCGGAGCTGGAAGAAAGGGATGTGGCCGCACTCGGCCCTCTTGAGGATGTG
 AAGACAGCCGCTCTGGGGCTTCTGGTATCCTTACAGCAAGCTGTACACCCTGCCTGCAAGCCACGCCA
 CGCGTGTGATGAGATGCTGGTCAGCCACATTCAGCTCCACTACAAGCACAGCTACACCCTGCCAATCGC
 GAGCAGCATCCGGCTGCAGGCCCTTGACTTCTGTGCTGCTGCGGGCCGACTCACTGCACCCGCTGGGC
 GTGCCCAACAAGGATGGAGTCGTGCGGTTACGCCCTACTGCGTCTGCGACTACATGGAGCCAGAGAGAG
 GCTCTGAGAAGAAGACCAGCGGCCCTTTCTCCTCCCACAGGGCTCCTGGCCCCGGCCTGCAGGCC
 CGCCGTGCGGCTGGGGTCCGTGCCCTACTCCCTGCTCTTCCGCGTCTGCTGCAAGTGTGCTGAGGAG
 TCTGACTGGAAGGTGCTGAAGCTGGTCTGGGAGGCTGCCTGAGTCCCTGCGCTATAAAGTGTCTATCT
 TTACTTCCCCTTGCAGTGTGGACCAGCTGTGCTCTGCTCTGCTCCATGCTTTTCAAGCCAAAGACT
 GGAGCGGCTCCGAGGCGCCCCAGAAGGCTTCTCCAGAAGTACTGACCTGGCCGTGGTCCAGTGTG
 ACAGCATTAATCTCTTACCATAACTACCTGGACAAAACCAACAGCGGAGATGGTCTACTGCTGGAGC
 AGGGCCTCATCCACCGCTGTGCCAGCCAGTGCCTGCTGCGCTTGTCCATCTGCAGCGTGGAGATGCCTGA
 CATCATCAAGGCGCTGCCTGTTCTGGTGGTGAAGCTCACGCACATCTCAGCCACAGCCAGCATGGCC
 GTCCACTGCTGGAGTCTCTGCTCACTCTGGCCAGGCTGCCGCACCTCTACAGGAACTTTGCCCGGAGC
 AGTATGCCAGTGTGTTCCGCATCTCCCTGCCGTACACCAACCCCTCCAAGTTAATCAGTACATCGTGTG
 TCTGGCCCATCACGTATAGCCATGTGGTTCATCAGGTGCCGCTGCCCTTCCGGAAGGATTTTGTCCCT
 TTCATCACTAAGGGCTGCGGTCCAATGTCTCTTGTCTTTGATGACACCCCGAGAAGGACAGCTTCA
 GGGCCCGAGTACTAGTCTCAACGAGAGACCAAGAGTCTGAGGATAGCCAGACCCCAAAACAAGGCTT
 GAATAACTCTCCACCCGTGAAAGAATCAAGGAGAGCTCTGCAGCCGAGGCTTCCGGTGGCCGAGCATC
 AGTGTCTGAACATGTGGTCCGAGCAGGATACAGACGTCCTCACCAGTGCAGCTGGGGTGGGCTGCGAG
 ATGAGAAGTCCGTGGCCAGGCTGACGATAGCCTGAAAAACCTCCACCTGGAGCTCAGGAAACCTGTCT
 GGACATGATGGTCGATACGTCTTCTCCAACCTCACGGCTGCCGGAAGAGGTCTCTGTGGGCGAGTTC
 CTCTAGCGGGTGGCAGGACAAAACCTGGCTGGTGGGAACAAGCTTGTCACTGTGACGACAAGCGTGG
 GAACCGGACCCGGTCTACTAGGCTGGACTCGGGGAGCTGCAGTCCGGCCCGGAGTGCAGCTCCAG
 CCCCAGGCTGCATGTGAGACAGACCAAGGAGGCGCCGCAAGCTGGAGTCCAGGCTGGCAGCAGGTG
 TCCCGTGGGGCCCGGATCGGGTCCGTTCCATGTCCGGGGGCCATGGTCTCGAGTTGGCGCCCTGGACG
 TGCCGGCTCCCAGTCTCTGGGCACTGCCACTTCTCCAGGACCAGGACTGCACCAGCCGCAAACTGA
 GAAGGCCTCAGCTGGCACCCGGTCTCTGTGCAGGAGAAGACGAACCTGGCGGCTATGTCCCTGCTG
 ACCCAGGCTGGGCGGAGTCTGGTCCGAGGCCACAGGGAACACCAGCTGGTGTGATGAGCCTGGAGA
 ACCCGCTCAGCCCTTCTCCTCGGACATCAACAACATGCCCTGCAGGAGCTGTCTAACGCCCTCATGGC
 GGCTGAGCGCTTCAAGGAGCACCGGACACAGCCCTGTACAAGTCACTGTGCGGTGCCGAGCCAGCAGC
 GCCAAACCCCTCCTCTGCCTCGCTCCAACACAGACTCCGCCGTGGTTCATGGAGGAGGGAAGTCCGGGCG
 AGGTTCTGTGCTGGTGGAGCCCCAGGTTGGAGGACGTTGAGGACGCTAGGCATGGACAGGCGCAC
 GGATGCCTACAGCAGGTCGTCTCAGTCTCCAGCCAGGAGGAGAAGTGCCTCCACGCGGAGGAGCTGGT
 GGCAGGGGATCCCCATCGAGCGAGTCTCTCCTCGGAGGTTGGCCGGCCCTCTGTGGACCTCTCCTTCC
 AGCCCTCGCAGCCCTGAGCAAGTCCAGTCTCTCCGAGCTGCAGACTCTGCAGGACATCCTCGGGGA
 CCCTGGGGACAAGGCGGACGTGGGCGGCTGAGCCCTGAGGTTAAGGCCGGTCAAGTCAAGGACCCCTG
 GACGGGAAAGTGTGCTGCTGGTGGCTCGGCCCTCGGGCAAGACAGTCCGGGCAAGCCGAGGCTCCTTGCCT
 CCAGCTCCCCGCTCGCCAGTGGCTCCGGCCCGAGGTTACACCATCTCCGACTCGGCCCATCACG
 CAGGGCAAGAGAGTAGAGAGGGACGCTTAAAGAGCAGAGCCACAGCCTCCAATGCAGAGAAAGTGCCA
 GGCATCAACCCAGTTTCTGTCTCTGAGCTCTACCATCCCCCTTCTTTGGGACGAGTCAAACAAGC
 CAATCCTGCTGCCAATGAGTACAGTCTTTGAGCGGTGGTGCAGTCTCTGACCAGATCCCATCATA
 CGACCCACAAGATCGCCGCTCTGTATGTTGGAGAAGGCCAGAGCAACAGCGAGCTCGCCATCTGTCC
 AATGAGCATGGCTCTACAGGTACACGGAGTCTCTGACGGCCTGGCCGGCTCATCGAGCTGAAGGACT
 GCCAGCCGACAAGGTGTACCTGGGAGGCTGGACGTGTGTTGGTGGAGACGGCCAGTTCACCTACTGCTG
 GCACGATGACATCATGAAGCCGCTTCCACATCGCCACCCTGATGCCCAAGGACGTGGACAAGCAC
 CGCTGCGACAAGAAGCGCCACCTGGGCAACGACTTTGTGTCCATTGTCTACAATGACTCCGGTGGAGACT
 TCAAGCTTGGCACCATCAAGGGCCAGTTCAACTTTGTCCACGTGATCGTCAACCCGCTGGACTACGAGTG
 CAACCTGGTGTCCCTGCAAGTGCAGGAAAGACATGGAGGGCCTTGTGGACACCAGCGTGGCCAAGATCGTG
 TCTGACCGCAACCTGCCCTTCTGTGGCCGCGAGATGGCCCTGCACGCAAAATGGCTCACAGGTGCATC

ATAGCCGCTCAACCCACCGATATCTACCCCTCCAAGTGGATTGCCCGCTCCGCCACATCAAGCGGCT
 CCGCCAGCGGATCTGCGAGGAAGCCGCCTACTCCAACCCAGCCTACCTCTGGTGACCCCTCCGTCAT
 AGCAAAGCCCCTGCACAGACTCCAGCCGAGCCACACCTGGTATGAGGTGGCCAGCGGAAGCGCTCA
 TCTCTCGGTGGAGGACTTCACCGAGTTTGTG

CTCGAG - GFP Tag - GTTTAA

Protein Sequence:

>RG226431 representing NM_001114382
 Red=Cloning site Green=Tags(s)

MAKPTSKDSGLKEKFKILLGLGTPRPNPRSAEGKQTEFIITAEILRELSMECGLNRRMIGQICEVAKT
 KKFEHAEALWKAVADLLQPERPLEARHAVLALLKAIVQGGERLGVLRALFFKVIKDYPNSNEDLHERL
 EVFKALTDNGRHITYLEEELADFVLQWMDVGLSSEFLLVLVNLVKFNCSYLDEYIARMVQMICLLCVRTA
 SSVDIIEVSLQVLDVAVVCYNCLPAESLPLFIVTLCRTINVKELCEPCWKLNRLLGTHLGHSAIYNMCHLM
 EDRAYMEDAPLLRGAVFVGMALWGAHRLYSLRNSPTSVLPSFYQAMACPNEVVSYEIVLSITRLIKKYR
 KELQVVAWDILLNIIERLLQQLQTLDSPELRTIVHDLLTTVEELCDQNEFHGSQERYFELVERCADQRPE
 SLLNLSYRAQSIHPAKDGWIQNLQALMERFFRSESRGAVRIKVLVLSFVLLINRQFYEEELINSVVI
 SQLSHIPEDKDHQVRKLATQLLVDLAEGCHTHFNSLLDIIEKVMARSLSPPELEERDVAAYSASLEDV
 KTAVLLGLVILQTKLYTLPASHATRVYEMLVSHIQLHYKHSYTLPIASSIRLQAFDFLLLRADSLHRLG
 LPNKDGVVRFSPYCVCDYMEPERGSEKKTSGPLSPPTGPPGPAPAGPAVRLGSVPYSLLFRVLLQCLKQE
 SDWKVLKLVLRPELRYKVLIFTSPCSVDQLCSALCSMLSGPKTLERLRGAPEGFRTDLHLAVVPVL
 TALISYHNYLDKTKQREMYCYCLEQGLIHRCASQCVALSICSVEMPDIIKALPVLVVKLTHISATASMA
 VPLLEFLSTLARLPHLYRNFAAEQYASVFAISLPHYTNPSKFNQYIVCLAHHVIAAMWFIRCLPFRKDFVP
 FITKGLRSNVLLSFDTPPEKDSFRARSTSLNERPKSLRIARPPKQGLNNSPPVKEFKESSAAEFRCRSI
 SVSEHVRSRIQTSLSASLGSADENSAQADDSLKNLHLELTETCLDMMARYVFSNFTAVPKRSPVGEF
 LLAGGRTKTWLVGNKLVTVTTSVGTGTRSLGLDSEGLQSGPESSSSPGVHVRQKEAPAKLESQAGQQV
 SRGARDRVRSMSGHGLRVGALDVPASQFLGSATSPGPRTAPAAKPEKASAGTRVPVQEKTNLAAYVPLL
 TQGWAEILVRRPTGNTSWLMSLENPLSPFSSDINNMPQLQELSNALMAAERFKEHRDTALYKSLVPAAST
 AKPPPLPRSNNTDSAVVMEEGSPGEVPVLVEPPGLEDEAALGMDRRTDAYSRSSSVSSQEEKSLHAEELV
 GRGPIPIERVSSSEGGRRPSVDLSFQPSQPLSKSSSPELQTLQDILGDPGDKADVGRLSPEVKARSQSGTL
 DGESAAWSASGEDSRGQPEGPLPSSSPRSPGLRPRGYTISDSAPSRRGKRVERDALKSRATASNAEKVP
 GINPSFVFLQYHSPFFGDESNKPILLPNEQSFSERSVQLLDQIPSYDTHKIAVLYVGEQSNSELAIS
 NEHGSYRYTEFLTGLGRLIELKDCQPKVYLGGLDVCGEDGQFTYCWDDIMQAVFHIAITLMPKDVVKH
 RCDKRRHLGNDFVSIYVNDGDFKLGTIKGFNFVHVI VTPLDYECNLVSLQCRKMEGLVDTSVAKIV
 SDRNLPFVARQMALHANMASQVHHSRNPDIYPSKWIARLRHIKRLRQRICEEAAYSNSPLPLVHPPSH
 SKAPAQTPAEPTPGYEVGQRKRLISSVEDFTEFV

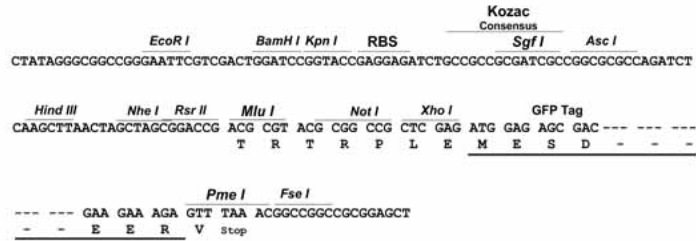
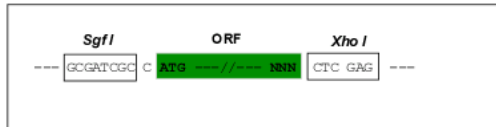
LE - GFP Tag - V

Restriction Sites:

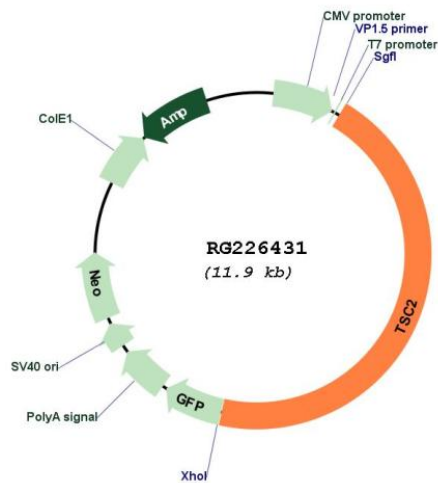
Sgfl-XhoI

Cloning Scheme:

Cloning sites used for ORF Shuttling:



Plasmid Map:



ACCN:	NM_001114382
ORF Size:	5352 bp
OTI Disclaimer:	The molecular sequence of this clone aligns with the gene accession number as a point of reference only. However, individual transcript sequences of the same gene can differ through naturally occurring variations (e.g. polymorphisms), each with its own valid existence. This clone is substantially in agreement with the reference, but a complete review of all prevailing variants is recommended prior to use. More info
OTI Annotation:	This clone was engineered to express the complete ORF with an expression tag. Expression varies depending on the nature of the gene.
Components:	The ORF clone is ion-exchange column purified and shipped in a 2D barcoded Matrix tube containing 10ug of transfection-ready, dried plasmid DNA (reconstitute with 100 ul of water).
Reconstitution Method:	<ol style="list-style-type: none">1. Centrifuge at 5,000xg for 5min.2. Carefully open the tube and add 100ul of sterile water to dissolve the DNA.3. Close the tube and incubate for 10 minutes at room temperature.4. Briefly vortex the tube and then do a quick spin (less than 5000xg) to concentrate the liquid at the bottom.5. Store the suspended plasmid at -20°C. The DNA is stable for at least one year from date of shipping when stored at -20°C.
RefSeq:	NM_001114382.2 , NP_001107854.1
RefSeq Size:	5577 bp
RefSeq ORF:	5355 bp
Locus ID:	7249
UniProt ID:	P49815
Cytogenetics:	16p13.3
Protein Families:	Druggable Genome
Protein Pathways:	Insulin signaling pathway, mTOR signaling pathway, p53 signaling pathway
Gene Summary:	Mutations in this gene lead to tuberous sclerosis complex. Its gene product is believed to be a tumor suppressor and is able to stimulate specific GTPases. The protein associates with hamartin in a cytosolic complex, possibly acting as a chaperone for hamartin. Alternative splicing results in multiple transcript variants encoding different isoforms. [provided by RefSeq, Jul 2008]