

Product datasheet for **RG226428**

KIF13A (NM_001105567) Human Tagged ORF Clone

Product data:

Product Type:	Expression Plasmids
Product Name:	KIF13A (NM_001105567) Human Tagged ORF Clone
Tag:	TurboGFP
Symbol:	KIF13A
Synonyms:	bA500C11.2; RBKIN
Mammalian Cell Selection:	Neomycin
Vector:	pCMV6-AC-GFP (PS100010)
E. coli Selection:	Ampicillin (100 ug/mL)
ORF Nucleotide Sequence:	>RG226428 representing NM_001105567 Red=Cloning site Blue=ORF Green=Tags(s)

TTTGTAAATACGACTCACTATAGGGCGGCCGGAATTCGTCGACTGGATCCGGTACCGAGGAGATCTGCC
GCC**CGATCGC**

ATGTCGGATACCAAGGTAAAAGTTGCCGTCCGGTCCGGCCCATGAACCGACGAGAACTGGAACGAACA
CCAAGTGCCTGGTGGAGATGGAAGGGAATCAAACGGTCTGCACCCTCCTCCTTCTAACACCAACAGGG
AGAAAGGAAACCTCCCAAGGTATTTGCCTTTGATTATTGCTTTTGGTCCATGGATGAATCTAACACTACA
AAATACGCTGGTCAAGAAGTGGTTTTCAAGTGCCTTGGGAAGGAATTCTGAAAAAGCCTTTAGGGGT
ATAATGCGTGTATTTTGCATATGGACAGACAGGTTCCGGAAAAATCCTTTCCATGATGGCCATGCTGA
GCAGCTGGGCCTTATCCAAGGCTCTGCTGTGCTTTATTTAAAGGATCTCTTTGGAGCAAAATGAGTCA
CAGACCTTTAAAGTTGAAGTGCTCTATATGGAATTTATAATGAGAAAGTTCGGGATCTTTTAGACCCCA
AAGGGAGTAGACAGTCTCTTAAAGTTCCGAGAACATAAAGTTTTGGGACCATATGTAGATGGTTTATCTCA
ACTAGCTGTCACTAGTTTGGAGATATTGAGTCATTGATGTCTGAGGGAAATAAGTCTCGAACGGTAGCT
GCTACCAACATGAACGAAGAAAGCAGCCGCTCCCATGCTGTGTTCAACATCATAATCACACAGACTTT
ATGACCTGCAGTCTGGGAATTCGGGGAGAAAGTCAGTAAGGTCAGCTTGGTAGACCTGGCGGTAGCGA
AAGAGTATCTAAACAGGAGCTGCAGGAGAGCGACTGAAAGAAGGCAGCAACATTAACAATCGCTTACA
ACCTTGGGGTTGGTTATATCATCACTGGCTGACCAGGCAGCTGGCAAGGGTAAAGCAAAATTTGTGCCTT
ATCGAGATTCAGTCTCACTTGGCTGCTTAAGGACAACCTTGGGGGGCAACAGCCAAACCTCTATGATAGC
CACAATCAGCCCAGCCGAGACAACATGAAGAGACCCTCTCCACATTAAGATATGCAGACCGAGCCAAA
AGGATTGTGAACCATGCTGTTGTGAATGAGGACCCCAACGCAAAAGTGATCCGAGAACTGCGGGAGGAAG
TCGAGAAACTGAGAGAGCAGCTCTCAGGCAGAGGCCATGAAGGCCCTGAAGTGAAGGAGAAGCTCGA
AGAGTCTGAAAAGCTGATAAAGAATAACAGTGACTTGGGAAGAGAAGCTGAGAAAAACAGAAGAGATA
GCACAGGAAAGACAACGACAACCTGAAAGCATGGGGATTTCCCTGGAGATGTCCGGTATCAAGGTGGGG
ATGACAAATGCTACTTAGTCAATCTGAATGCAGACCCTGCTCTTAACGAACCTCTGGTTTATTATTTAA
GGATCACACCAGGTGGGTGCAGATACCTCAAGATATCCAGCTTTTGGCATAGGAATTCAGCCTCAG



[View online »](#)

CACTGTGAGATTGACATTGCATCTGATGGAGACGTCACTCTCACTCCAAAAGAAAATGCAAGGTCCTGTG
 TGAACGGCACCCTTGTGTGACGTACCACCCAGCTGTGGCATGGTGACCGAATCCTATGGGAAAATAATCA
 CTTTTTGAATAAACTTACCTAAGAGGAAACGTCGAGATTGGTTGAAAGACTTTGAAAAAGAACGGGC
 CCGCCAGAGCATGACCTGGATGCAGCCAGTGAGGCTTCTCTGAACCAGACTATAACTATGAATTTGCAC
 AGATGGAAGTTATCATGAAAACCTGAATAGTAATGACCCAGTTCAAAATGTGGTTCAAGTCCTGGAGAA
 ACAATACCTAGAAGAAAAGAGAAGTGCCCTAGAGGAGCAGCGGCTCATGTATGAGCGGAACTGGAGCAA
 CTCCGCCAGCAGCTCTCCCCGACAGGCAGCCACAGAGTAGCGGCCCTGACCGCCTGGCCTACAGCAGCC
 AGACAGCGCAGCAGAAGGTGACCCAGTGGGCAGAAGAGAGGGATGAACTCTCCGACAAAAGCCTGGCAAA
 ACTGCGAGAGCAGCTGGTTAAAGCTAATACCTTGGTGAGGGAAGCAAACTTCTGGCTGAGGAAATGAGC
 AAACCTACCGATTACCAAGTGACTCTTCAGATCCCTGCTGCAAACCTCAGTGCCAATAGGAAGAGAGGTG
 CAATAGTGAGTGAAACAGCTATCCAAGTGAGGAGGAAAGGAAAGAGCACCCAAGTGTGGACCATTGAGAA
 GCTGGAGAATAAATTAATTGACATGAGAGACCTTTACCAAGAATGGAAGGAAAAAGTTCTGAGGCAAAAG
 AGACTCTACGGAAAACGAGGTGACCTTTCTATGAAGCCCAAGAAAATCACAACCTCATCGGGGTGGCGA
 ATGTATTCTTGAATGCCTTTCTGTGATGTGAACTTCAGTATGCAGTCCCTATCATCAGCCAGCAGGG
 GGAGGTTGCAGGGCGTCTCCACGTGGAAGTGATGCGTGTTACAGGAGCTGTTCCAGAGCGTGTGGTGGAG
 GATGACTCTTCGGAGAATTCCAGTGAAAGTGGGAGCCTTGAAAGTCGTAGACAGCAGCGGGGAAATCATTC
 ACCGAGTCAAAAAGCTGACATGTCGGGTAAAAATTAAGAAGCAACGGGGCTGCCCTTAAACCTCTCAAA
 TTTTGTCTTGTCAATACACATTCTGGGACCAAGTGAGTGTACGGTGGCTGCCCGGTGGTGGACCCC
 GAGGTGCCTTCACCACAGTCCAAGGATGCCAGTACACAGTGACCTTCTCCCACTGTAAGGACTATGTGG
 TGAATGTAAACAGAAGATTTCTGGAGTTCAATTCAGATGGAGCACTGGCCATTGAAGTATGGGGCCACCG
 GTGTGCTGGAATGGCAGCTCCATCTGGGAGGTCGATTCTTTCATGCTAAGACAAGAACTGCATGAC
 AGGTGGAATGAAGTAACGCGAAGAATAGAAATGTGGATCTCCATATTAGAATTGAATGAGTTAGGAGAGT
 ATGTCAGTGGAACTTCATCAGGCAAAAGATGTCAACACAGGAGGCATCTTCAACTTAGACAGGGTCA
 TTCCCGTAGAGTACAAGTACGGTGAAACCTGTGCAGCATTGAGGAGCACTGCCACTTATGGTTGAAGCC
 ATCCTGTGAGTATCCATCGGCTGTGTAAGTCCAGGTCCACCAAACTCCAAGAGGGCTGGACAGTTACC
 AGGAAGAAGACTTAACTGCGTAAGGGAGAGGTGGTCAAGTCACTATTAAACGACGAGAATACCTGGA
 TGAACAGATAAAAAAGTCAGCAATAAAACAGAGAAAACAGAGGACGATGTGGAGCGGGAAGCCAGCTT
 GTGGAGCAGTGGGTAGGGCTGACTGAGGAAAGGAATGCTGTGCTGGTCCAGCCCCAGGCAGTGGGATTC
 CTGGGGCACCTGCCGACTGGATCCACCTCCTGGAATGGAACCCACATACCAGTTCTCTTCTCGATTT
 GAATGCGGATGACCTCAGTGCCAATGAGCAGCTTGTGGCCCCATGCATCCGGCGTGAATCCATCCTG
 CCCAAGGAGCATGGCAGCCAGTTTTTCTACCTGCCATCATAAAGCACAGTGATGATGAGGTTTCAGCCA
 CAGCCTCTTGGGATTCTCGGTGCATGATTCTGTTCACCTGAATAGGGTCACACCACAGAATGAAAGGAT
 TTACCTAATTGTGAAAACACAGTTCAACTCAGCCACCCTGCTGCTATGGAGTTAGTATTACGAAAACGA
 ATTGCAGCCAATATTTACAACAAACAGAGTTTACGCGAGAGTTTGAAGAGGAGAATATCCCTGAAAAATA
 TATTTTATTCTGTGGTGAACCTATGAAATAGTATCCAATATACCAAAGGCAACTGAGGAGATAGAGGA
 CCGGGAACCGCTGGCTCTCCTGGCAGCAAGGAGTGAAAACGAAGGCACATCAGATGGGGAGACGTACATT
 GAGAAGTACACTCGAGGCGTGCTGCAGGTGAAAAACATTCTGAGTCTTGAACGGCTCCGGCAGGCCGTCA
 CAGTCAAGAAGCACTTTCCACCAAAGCCCGGCACATTCGGAGGAGCCTCAGTACACCAATGTTTCATAA
 TGTCTCTTCCAGCCGACCGGACCTTTCTGGCTTTGATGAAGATGACAAGGTTGGCCAGAGAACAGTTG
 GACATGTCTGACTATAGCTCCAGTTACCAAGATGTAGCATGTTATGGAACTTTACCCAGGGATTCTCCTC
 GAAGGAATAAAGAAGGTTGTACATCAGAGACTCCTCATGCCTTAACCGTCAGCCCTTTTAAAGCATTCTC
 TCCTCAGCCACCAAAGTTTTTCAAGCCCTAATGCCTGTAAAAGAGGAGCATAAGAAAAGGATAGCCCTG
 GAAGCAAGGCCTCTTCTAAGCCAGGAGGACTCTGAGGAGGAAGAAAATGAGCTGGAAGCTATTAACAGGA
 AGCTAATAAGTTACAGCCTTATGTACCTGTGGAGTTTGTGACTTCAGTGTTTACAATGCCAGCTTGGGA
 GAACAGGGAATGGTTTTCTCTAAAGTAGATCTGTCAAACCTCACGGGTCTGGAGAAAGAAGTGCCCGT
 AGCCCTACCACAGCAGTATTACAGTGGCTACTTTTCCACAGTGCCTCCAATGCCACCCTGTCTGACA
 TGGTGGTCCCTTCTAGTGACAGCTCAGACCAGCTGGCCATTGAGACGAAGGATGCAGACTCCACCGAGCA
 CTCCACACCATCGCTTGTGCATGATTTACAGGCCGTCTCAAACAAGAGTTGACAGAAGTCGAAAAGGC
 TTGGTAAGGACAAAGATAATTGTGGTGCCACTCAAGGAAAAACAGTGCCCTAGCCAAAGGGAGCCCATCAT
 CCCAGAGCATCCCTGAGAAAACTCAAATCACTGTGCAGGACTGGCTCATGTTGAGAACTAGATGCCTG
 CCCCAGCAAAATAGCCAGCCAGCCAGGGGATTCTGCCCCAGGGAGGTGACGGTGAACACACCACCAAC
 ATCCTTGAAGACCATTCTTTCACAGAATTTATGGGAGTGTGAGGGAAGAAAGATTTTGTGGTTTGACAG

ATTCTTCTGCTGGAGAGCTTTCCAGTAGGAGGAGTCTACCAAATAAAACAGGCGGCAAGACTGTCTCCGA
TGGGCTCCACCACCCAGCCAGCTGCATTCCAAGTTAGAGAATGACCAGGTAATAATTCCAGAGGCAGCC
TTTTGGTTCTGTGCTGTCAA

ACGCGTACGCGGCCGCTCGAG – GFP Tag – GTTTAA

Protein Sequence:

>RG226428 representing NM_001105567

Red=Cloning site Green=Tags(s)

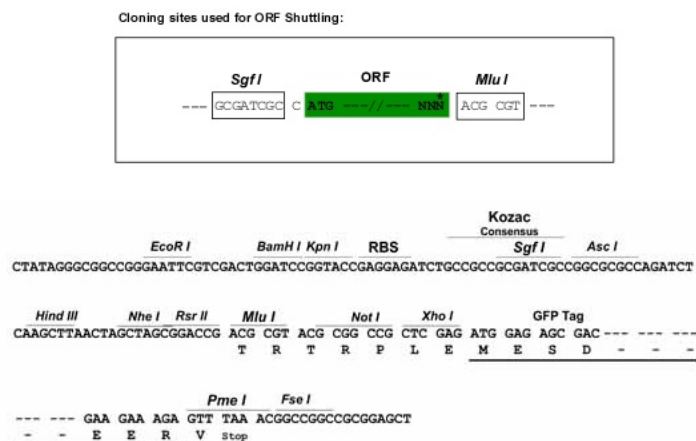
MSDTKVKVAVRVRPMNRRELELNTKCVVEMEGNQTVLHPPPSNTKQGERKPPKVFADFYCFWSDMESNTT
KYAGQEVVFKCLGEGILEKAFQGYNACIFAYGQTGSGKSFMMGHAEQLGLIPRLCCALFKRISLEQNES
QTFKVEVSYMEIYNEKVRDLDLPKGSRLKVRHKKVLPYVDGLSQLAVTSFEDIESLMSEGNKSRTVA
ATNMNEESSRSHAVFNIIITQTLYDLQSGNSGEKVSQVSLVDLAGSERVSKTGAAGERLKEGNSINKSLT
TLGLVISSLADQAAGKGSKFVPYRDSVLTWLLKDNLGGNSQTSMIATISPAADNYEETLSTLRADRAK
RIVNHAVVNEDPNAKVIRELREEVEKLREQLSQAEAMKAPELKEKLESEKLIKELTVTWEEKLRKTEEI
AQERQRQLESMGISLEMSGIKVGGDDKCYLVNLNADPALNELLVYYLKDHTRVGADTSQDIQLFGIGIQPQ
HCEIDIASDGDVTLTPKENARSCVNGTLVCSTTQLWHGDRILWGNHFFRINLPKRKRDRWLKDFEKETG
PPEHDLDAASEASPEPDYNYEFAQMEVIMKTLNSNDPVQNVVQVLEKQYLEEKRSALAEQRLMYERELEQ
LRQQLSPDRQPQSSGPDRLAYSSQTAQQKVTQWAEERDELFRQSLAKLREQLVKANTLVREANFLAEEMS
KLTDYQVTLQIPAAANLSANRKGAIIVSEPAIQVRRKGKSTQVWTIEKLENKLDIMRDLVQEWKEKVPEAK
RLYGKRGDPFYEAQENHNLIGVANVFLECLFCDVKLQYAVPIISQQGEVAGRLHVEVMRVTGAVPERVVE
DDSSSENSESSEGSLEVVDSSGEIHRVKKLTCRVKIKEATGLPLNLSNFVFCQYTFWDQCESTVAAPVVD
EVPSPQSKDAQYTVTFSHCKDYVNVTEEFLEFISDGAIAIEVWGHRCAGNGSSIWEVDSLHAKTRTLHD
RWNEVTRRIEMWISILELNELGEYAABELHQAKDVNTGGIFQLRQGHRRVQVTVKPVQHSGLPLMVEA
ILSVSIGCVTARSTKLQRLDSYQEEEDLNCVRERWSDALIKRREYLDEQIKKVSINKTEKTEDDVEREAQL
VEQWVGLTEERNAVLVPAPGSGIPGAPADWIPPPGMETHIPVFLDLNADDLSANEQLVGPASGVNSIL
PKEHGSQFFYLPIIKHSDDEVSATASWDSSVHDSVHLNRVTPQNERIYLVKTTVQLSHPAAMELVLRKR
IAANIYNKQSFTQSLKRRISLKNIFYSCGVTYEIVSNIPKATEEIEDRETLALLAARSENEGTSGETYI
EKYTRGVLQVENILSLERLRQAVTVKEALSTKARHIRRSLSTPNVHNVSRRPDLSGFDEDDKGWPNQL
DMSDYSSSYQDVACYGTLPRDSPRRNKEGCTSETPHALTVSPFKAFSPQPPKFFKPLMPVKEEHKKRIAL
EARPLLSQEDSEEEENELEAINRKLISSQPYVPVEFADFVYNASLENREWFSSKVDLSNSRVLEKEVSR
SPTTSSITSGYFSSASNATLSDMVVPSSDSSQLAIQTKDADSTEHSTPSLVHDFRPSSNKELTEVEKG
LVKDKIIVVPLKENSALAKGSPSSQSIPEKNSKSLCRTGSCSELDACPSKISQPARGFCPREVTVEHTTN
ILEDHSFTEFMGVSEKDFDGLTDSSAGELSSRRSLPNKTGGKTVSDGLHHPSQLHKSLENDQVIPEAA
FWVLCCQ

TRTRPLE – GFP Tag – V

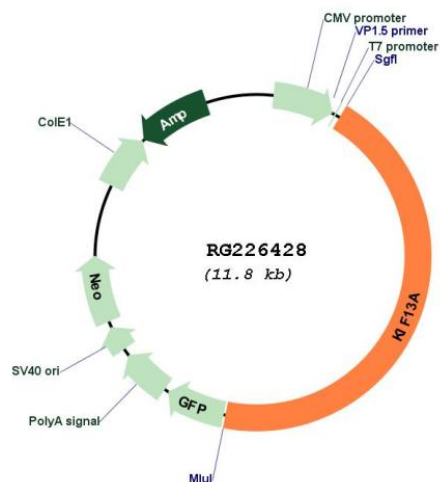
Restriction Sites:

Sgfl-MluI

Cloning Scheme:



Plasmid Map:



ACCN:	NM_001105567
ORF Size:	5271 bp
OTI Disclaimer:	The molecular sequence of this clone aligns with the gene accession number as a point of reference only. However, individual transcript sequences of the same gene can differ through naturally occurring variations (e.g. polymorphisms), each with its own valid existence. This clone is substantially in agreement with the reference, but a complete review of all prevailing variants is recommended prior to use. More info
OTI Annotation:	This clone was engineered to express the complete ORF with an expression tag. Expression varies depending on the nature of the gene.
Components:	The ORF clone is ion-exchange column purified and shipped in a 2D barcoded Matrix tube containing 10ug of transfection-ready, dried plasmid DNA (reconstitute with 100 ul of water).
Reconstitution Method:	<ol style="list-style-type: none"> 1. Centrifuge at 5,000xg for 5min. 2. Carefully open the tube and add 100ul of sterile water to dissolve the DNA. 3. Close the tube and incubate for 10 minutes at room temperature. 4. Briefly vortex the tube and then do a quick spin (less than 5000xg) to concentrate the liquid at the bottom. 5. Store the suspended plasmid at -20°C. The DNA is stable for at least one year from date of shipping when stored at -20°C.
RefSeq:	NM_001105567.3
RefSeq Size:	5861 bp
RefSeq ORF:	5274 bp
Locus ID:	63971
UniProt ID:	Q9H1H9
Cytogenetics:	6p22.3
Protein Families:	Druggable Genome
Gene Summary:	This gene encodes a member of the kinesin family of microtubule-based motor proteins that function in the positioning of endosomes. This family member can direct mannose-6-phosphate receptor-containing vesicles from the trans-Golgi network to the plasma membrane, and it is necessary for the steady-state distribution of late endosomes/lysosomes. It is also required for the translocation of FYVE-CENT and TTC19 from the centrosome to the midbody during cytokinesis, and it plays a role in melanosome maturation. Alternative splicing of this gene results in multiple transcript variants. [provided by RefSeq, Aug 2011]