

Product datasheet for **RG226399**

CrkRS (CDK12) (NM_015083) Human Tagged ORF Clone

Product data:

Product Type:	Expression Plasmids
Product Name:	CrkRS (CDK12) (NM_015083) Human Tagged ORF Clone
Tag:	TurboGFP
Symbol:	CDK12
Synonyms:	CRK7; CRKR; CRKRS
Mammalian Cell Selection:	Neomycin
Vector:	pCMV6-AC-GFP (PS100010)
E. coli Selection:	Ampicillin (100 ug/mL)
ORF Nucleotide Sequence:	>RG226399 representing NM_015083 Red=Cloning site Blue=ORF Green=Tags(s)

GACGTTGTATACGACTCCTATAGGGCGGCCGGAATTCGTCGACTGGATCCGGTACCGAGGAGATCTGCC
GCCGGCGGCC

ATGCCAATTCAGAGAGACATGGGGCAAGAAGGACGGGAGTGGAGGAGCTTCTGGAACCTTGCAGCCGT
CATCGGGAGGCGGCAGCTCTAACAGCAGAGAGCGTCACCGCTTGGTATCGAAGCACAAGCGGCATAAGTC
CAAACACTCCAAAGACATGGGGTGGTGACCCCGAAGCAGCATCCCTGGGCACAGTTATCAAACCTTTG
GTGGAGTATGATGATATCAGCTCTGATTCGACACCTTCTCCGATGACATGGCCTTCAAACCTAGACCGAA
GGGAGAACGACGAACGTCGTGGATCAGATCGGAGCGACCGCTGCACAAACATCGTCACCCAGCAGCAG
CGGTTCCCGGGACTTACTAAAAGCTAAACAGACCGAAAAAGAAAAAGCCAAGAAGTCTCCAGCAAGTCCG
GGATCGATGAAGGACCGGATATCGGGAAGTTCAAAGCGTTTCAATGAGGAGACTGATGACTATGGGAAGG
CGCAGGTAGCCAAAAGCAGCAGCAAGGAATCCAGGTCAATCAAGCTCCACAAGGAGAAGACCAGGAAAGA
ACGGGAGCTGAAGTCTGGGCACAAAGACCGGAGTAAAAGTCAATCGAAAAAGGAAACACCCAAAAGTTAC
AAAACAGTGGACAGCCAAAACGGAGATCCAGGAGCCCCACAGGAAGTGGTCTGACAGCTCAAACAAG
ATGATAGCCCCTCGGGAGCTTCTATGGCCAAGATTATGACCTTAGTCCCTCACGATCTCATACCTCGAG
CAATTATGACTCCTACAAGAAAAGTCTTGAAGTACCTCGAGAAGGCAGTCGGTCACTCCCTTACAAG
GAGCCTTCGGCCTACCAGTCCAGCACCCGGTACCGAGCCCTACAGTAGCGCAGAGATCTGTGAGT
CCTATAGCAGGAGACGGTCCGCTCCAGCTACGAAAGAAGTGGCTTACAGCGGGCGATCGCCAGTCCCTA
TGGTCAAGGCGGTCCAGCAGCCCTTCTGAGCAAGCGGTCTCTGAGTGGAGTCCACTCCCCAGTAGG
AAATCCATGAAGTCCAGAAGTAGAAGTCTGCATATTCAGACATTCATCTTCTCATAGTAAAAAGAAGA
GATCCAGTTCACGCAGTCGTCAATCCAGTATCTCACCTGTGAGGCTTCCACTTAATTCAGTCTGGGAGC
TGAACCTAGTAAAAAGAAGGAAAGAGCAGCTGCTGCTGCTGCAGCAAGATGGATGGAAGGAGTCC
AAGGGTTCACCTGTATTTTTGCCTAGAAAAGAGAACAGTTCAGTAGAGGCTAAGGATTCAAGTTTGGAGT
CTAAAAAGTTACCCAGAAGTGTAAAATTGAAAAATCTGCCCCAGATACTGAACCTGGTGAATGTAACACA
TCTAAACACAGAGGTAATAAATCTTTCAGATACAGGAAAGTAAAGTTGGATGAGAACTCCGAGAAGCAT



CTTGTTAAAGATTTGAAAGCACAGGGAACAAGAGACTCTAAACCCATAGCACTGAAAGAGGAGATTGTTA
CTCCAAAGGAGACAGAAACATCAGAAAAGGAGACCCCTCCACCTCTCCACAATTGCTTCTCCCCACC
CCCTCTACCAACTACTACCCCTCCACCTCAGACACCCCTTTGCCACCTTTGCCTCCAATACCAGCTCTT
CCACAGCAACCACCTCTGCCTCCTTCTCAGCCAGCATTTAGTCAGGTTCCCTGCTTCCAGTACTTCAACT
TGCCCCCTTCTACTCACTCAAAGACATCTGCTGTGTCTCTCAGGCAAATCTCAGCCCCCTGTACAGGT
TTCTGTGAAGACTCAAGTATCTGTAACAGCTGCTATTCCACACTGAAAACTTCAACGTTGCCTCCTTTG
CCCCTCCACCCCTATTACCTGGAGATGATGACATGGATAGTCCAAAAGAAAACCTTCTTCAAAAACCTG
TGAAGAAAAGAGAAGGAACAGAGGACACGTCACTTACTCACAGACCTTCTCTCCCTCCAGAGCTCCCTGG
TGGAGATCTGTCTCCCCAGACTCTCCAGAACC AAAGGCAATCACACCACCTCAGCAACCATATAAAAAG
AGACAAAAATTTGTTGCTCCTGTTATGGAGAAAAGACAAACAGAAAGCGACTGGGGGAAACGCTGTG
TGGACAAGTTTGACATTATTGGGATTATTGGAGAAGGAACCTATGGCCAAGTATATAAAGCCAAGGACAA
AGACACAGGAGAACTAGTGGCTCTGAAGAAGGTGAGACTAGACAATGAGAAAGAGGGCTTCCAATCACA
GCCATTCGTGAAATCAAATCCTTCGTGAGTTAATCCACCGAAGTGTGTTAACATGAAGGAAATGTCA
CAGATAACAAGATGCACTGGATTTCAAGAAGGACAAAGGTGCCTTTTACCTTGTATTTGAGTATATGGA
CCATGACTTAATGGGACTGCTAGAATCTGTTTTGGTGCATTTTTCTGAGGACCATATCAAGTCGTTTCATG
AAACAGCTAATGGAAGGATTGGAATACTGTCACAAAAAGAATTTCTGCATCGGGATATTAAAGTGTCTA
ACATTTTGTGAATAACAGTGGGCAAACTCAAACAGCAGATTTTGGACTTGCTCGGCTCTATAACTCTGA
AGAGAGTCGCCCTTACACAAAACAAAGTCATTACTTTGTGGTACCGACCTCCAGAACTACTGCTAGGAGAG
GAACGTTACACACCAGCCATAGATGTTTGGAGCTGTGGATGTAATCTTGGGGAACATTACAAAAGAAGC
CTATTTTTCAAGCCAATCTGGAAGTGGCTCAGCTAGAAGTATGATCAGCCGACTTTGTGGTAGCCCTGTCC
AGCTGTGTGGCCTGATGTTATCAAACAGCCCTACTTCAACACCATGAAACCGAAGAAGCAATATCGAAGG
CGTCTACGAGAAGAATTTCTTTTCACTTCTTCTGCAGCACTTGATTTATTGGACCACATGCTGACACTAG
ATCCTAGTAAGCGGTGCACAGCTGAACAGACCCCTACAGAGCGCACTTCTTAAAGATGTGCAACTCAGCAA
AATGGCTCCTCCAGACCTCCCCACTGGCAGGATTGCCATGAGTTGTGGAGTAAGAAACGGCGACGTCAG
CGACAAAGTGGTGTGTAGTCTGAAGAGCCACCTCCATCCAAAACCTTCTCGAAAAGAAAACCTCAGGGA
CAAGTACTGAGCCTGTGAAGAACAGCAGCCAGCACCACCTCAGCCTGCTCCTGGCAAGGTGGAGTCTGG
GGCTGGGGATGCAATAGGCCTTGTGACATCACACAACAGCTGAATCAAAGTGAATTGGCAGTGTATTA
AACCTGCTGCAGAGCCAAACCGACCTGAGCATCCCTCAAATGGCAGAGCTGCTTAACATCCACTCCAACC
CAGAGATGCAGCAGCAGCTGGAAGCCCTGAACCAATCCATCAGTCCCTGACGGAAGCTACTTCCCAGCA
GCAGGACTCAGAGACCATGGCCCCAGAGGAGTCTTTGAAGGAAGCACCCCTCTGCCCCAGTATCCTGCCT
TCAGCAGAACAGACGACCCTTGAAGCTTCAAGCACACCAGCTGACATGCAGAATATATTGGCAGTTCTCT
TGAGTCAGCTGATGAAAACCCAAGAGCCAGCAGGCACTGGAGGAAAACAACAGTGACAAGAACAGTGG
GCCACAGGGGCCCGAAGAACTCCACAATGCCACAGGAGGAGGAGCAGAGAAGAGGGCCCCCTGAGCCC
CCCGGACCTCCACCGCCGCCACCTCCACCCCTCTGGTTGAAGGCGATCTTTCCAGCGCCCCCAGGAGT
TGAACCCAGCCGTGACAGCCGCTTGTGCAACTTTTATCCCAGCCTGAAGCAGAGCCTCCTGGCCACCT
GCCACATGAGCACCAGGCTTGAAGCAATGGAGTACTCCACCCGACCCCGTCCAAACAGGACTTATGGA
AACACTGATGGCCTGAAACAGGGTTTCAGTGCCATTGACTGATGAACGAAACTCTGGTCCAGCCTTGA
CAGAATCCTTGGTCCAGACCTGGTGAAGAACAGGACCTTCTCAGGCTCTCTGAGCCACCTTGGGAGTC
CAGCAGTTACCAGGGCACAGGTCAGTGCAGTTCCAGGGGACCAGGACCTCCGTTTTGCCAGGGTCCCC
TTAGCGTTACACCCGGTGGTGGGCAACCATTCCTGAAGGCTGAGGGAAGCAGCAATTCTGTGTTACATG
CAGAGACCAAATGCAAACTATGGGGAGCTGGGGCCAGGAACCTGGGGCCAGCAGCTCAGGAGCAGG
CCTTCACTGGGGGGCCCAACTCAGTCTTCTGCTTATGAAAACTCTATCGGGGGCTACAAGAGTCCCA
CCAAGAGGGGGAAGAGGGAGAGGAGTTCCTTAC

ACGCGTACGCGGCCGCTCGAG – GFP Tag – GTTTAA

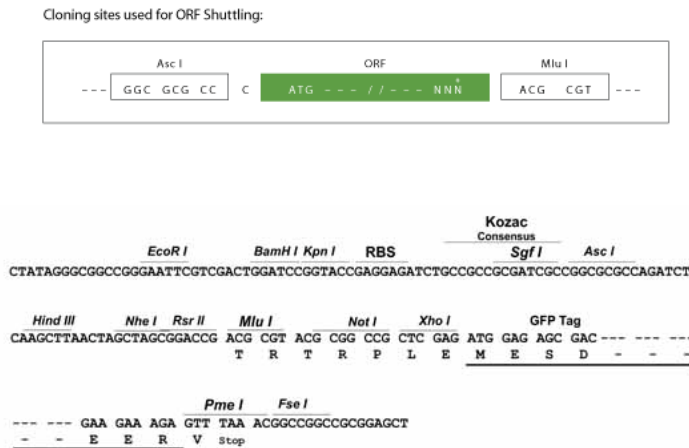
Protein Sequence: >RG226399 representing NM_015083
 Red=Cloning site Green=Tags(s)

MPNSERHGGKKDGGSGGASGTLQPSSGGGSSNSRERHRLVSKHKRHKSKHSDMGLVTPEAASLGTVIKPL
 VEYDDISSDSTDFSDMAFKLDRRENDERRGSDRDLHKHRHHQHRRSRDLLKAKQTEKEKSQEVSSKS
 GSMKDRISGSSKRSNEETDDYGAQVAKSSSKESSKLHKEKTRKERELKSGHKDRSKSHRKRETPKSY
 KTVDSPKRRSRSPHRKWSDDSSKQDDSPSGASYGQDYDLSPSRSHTSNNDYSYKKSFGSTSRQSVSPPYK
 EPSAYQSSSTRSPSPYRQRQSVSPYRQRSSSYERSGSYSGRSPSPYGRRRSSSPFLSKRSLSRSPSPSR
 KSMKSRSPAYSRHSSSHSKKRSSSRSRHSSI SPVRLPLNSSLGAELSRKKKERAAAAAAKMDGKES
 KGSPVFLPRKENSVEAKDGLSKKLPRSVKLEKAPDTEL VNVTHL NTEVKNSSDTGKVKLDENSEKH
 LVKDLKAQTRDSKPIALKEEIVTPKETETSEKETPPPLPTIASPPPLPTTTTPPPQTPPLPPLPAL
 PQQPPLPPSQPAFSQVPASSTLPPSTHKTSAVSSQANSQPPVQVSVKTQVSVTAAIPHLKTSTLPLP
 PLPPLLPGLDDMDSPKETLPSKPVKKEKEQRTRHLLTDLPLPELPGDDLSPDSEPKAITPPQQPYK
 RPKICCPRYGERRQTESDWGKRCVDFDIIGIIGEGTYGQVYKAKDKDTGELVALKKVRLDNEKEGFPIT
 AIREIKILRQLIHRSVVNMKEIVTDKQDALDFKKDKGAFYLVFEYMDHDLMLLESLGVHFSEDHIKFSM
 KQLMEGLE YCHKNFLHRDIKCSNILLNNSGQIKLADFLARLYNSEESRPYTNK VITLWYRPEL LLLGE
 ERYTPAIDVWSCGICLGFETKPIFQANLELAQLELISRLCGSPCAVWPDVIKLPYFNTMKPKKQYRR
 RLREEFSFIPSAALDLLDHMLTLDPSKRCTAEQTLQSDFLKDVLSKMAPPDLPHWQDCHELWSKRRRQ
 RQSGVVVEEPPPSKTSRKETTSGTSTEPVNSSPAPPQAPGKVESGAGDAIGLADITQQLNQSELAVLL
 NLLQSQTDLSIPQMAQLLNHSNPEMQQLEALNQSISALTEATSQQDSEMAPEESLKEAPSAPVILP
 SAEQTTLEASSTPDMQNILAVLLSQLMKTQEPAGSLEENNSDKNSGPGQPRRTPMPQEEAAEKRPPEP
 PGPPPPPPPPPLVEGDLSSAPQELNPAVTAALLQLLSQPEAEPPGHLPEHQALRPMYEYSTRPRNRTYG
 NTDGPTGFS AIDTDERNSGPALTESLVQTLVKNRTFSGLSHLGESSYQGTGVSQVQFPDQDLRFARVP
 LALHPVVGQPFLLKAESSNSVVAETKLQNYGELGPGTTGASSSGAGLHWGGPTQSSAYGKLYRGPTRVP
 PRGGRGRGPVY

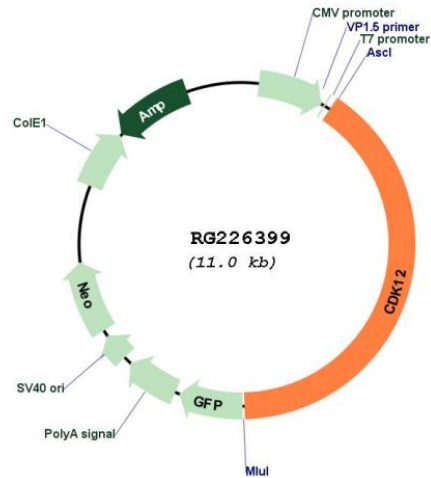
TRTRPLE - GFP Tag - V

Restriction Sites: AscI-MluI

Cloning Scheme:



Plasmid Map:



ACCN: NM_015083

ORF Size: 4443 bp

OTI Disclaimer: The molecular sequence of this clone aligns with the gene accession number as a point of reference only. However, individual transcript sequences of the same gene can differ through naturally occurring variations (e.g. polymorphisms), each with its own valid existence. This clone is substantially in agreement with the reference, but a complete review of all prevailing variants is recommended prior to use. [More info](#)

OTI Annotation: This clone was engineered to express the complete ORF with an expression tag. Expression varies depending on the nature of the gene.

Components: The ORF clone is ion-exchange column purified and shipped in a 2D barcoded Matrix tube containing 10ug of transfection-ready, dried plasmid DNA (reconstitute with 100 ul of water).

Reconstitution Method:	<ol style="list-style-type: none">1. Centrifuge at 5,000xg for 5min.2. Carefully open the tube and add 100ul of sterile water to dissolve the DNA.3. Close the tube and incubate for 10 minutes at room temperature.4. Briefly vortex the tube and then do a quick spin (less than 5000xg) to concentrate the liquid at the bottom.5. Store the suspended plasmid at -20°C. The DNA is stable for at least one year from date of shipping when stored at -20°C.
RefSeq:	NM_015083.3
RefSeq Size:	8283 bp
RefSeq ORF:	4446 bp
Locus ID:	51755
UniProt ID:	Q9NYV4
Cytogenetics:	17q12
Protein Families:	Druggable Genome, Protein Kinase
Gene Summary:	Cyclin-dependent kinase that phosphorylates the C-terminal domain (CTD) of the large subunit of RNA polymerase II (POLR2A), thereby acting as a key regulator of transcription elongation. Regulates the expression of genes involved in DNA repair and is required for the maintenance of genomic stability. Preferentially phosphorylates 'Ser-5' in CTD repeats that are already phosphorylated at 'Ser-7', but can also phosphorylate 'Ser-2'. Required for RNA splicing, possibly by phosphorylating SRSF1/SF2. Involved in regulation of MAP kinase activity, possibly leading to affect the response to estrogen inhibitors.[UniProtKB/Swiss-Prot Function]