

## Product datasheet for **RG226378**

### UBE4B (NM\_001105562) Human Tagged ORF Clone

#### Product data:

Product Type:	Expression Plasmids
Product Name:	UBE4B (NM_001105562) Human Tagged ORF Clone
Tag:	TurboGFP
Symbol:	UBE4B
Synonyms:	E4; HDNB1; UBOX3; UFD2; UFD2A
Mammalian Cell Selection:	Neomycin
Vector:	pCMV6-AC-GFP (PS100010)
E. coli Selection:	Ampicillin (100 ug/mL)
ORF Nucleotide Sequence:	>RG226378 representing NM_001105562 Red=Cloning site Blue=ORF Green=Tags(s)

TTTTGTAATACGACTCACTATAGGGCGGCCGGAATTCGTCGACTGGATCCGGTACCGAGGAGATCTGCC  
GCC**CGATCGCC**

ATGGAGGAGCTGAGCGCTGATGAGATTCGACGGAGGCGCCTTGCACGACTTGCTGGTGGACAGACCTCTC  
AGCCAACCACCCACTCACCTCTCCCCAGAGGGAGAACCCTCCGGGGCCTCCCATAGCGGCATCAGCCCC  
AGGACCCTCTCAGAGTCTTGGTCTCAATGTCCACAACATGACCCAGCTACCTCCCCAATAGGTGCATCA  
GGAGTAGCCCATCGAAGCCAGAGCAGTGAAGGAGTCAGTTCTCTCAGCAGCTCGCCCTCTAATAGCCTTG  
AAACGCAATCTCAGTCTCTCTCACGTTCCAGAGCATGGATATCGATGGTGTCTCATGTGAGAAAAGCAT  
GTCCCAGGTGGATGTGGATTGAGGAATTGAAAACATGGAGGTTGATGAAAATGATCGAAGAGAAAAGCGG  
AGCCTCAGTGATAAGGAGCCTTCTCGGGCCCTGAAGTGTCTGAAGAGCAGGCCTTACAGCTGGTCTGTA  
AGATCTCCGTGTCTCTTGAAGGACCGGGACAGAGATGTCATCTTTCTTTCTTTCTTTCTGCACAGTT  
TAAGCAGAACCCAAAAGAAGTATTCTCCGATTTAAGGACTTGATTGGCCAGATTTAATGGAAGTGCTA  
ATGATGTCCACTCAGACCAGAGATGAAAACCCATTTGCCAGTCTGACAGCCACATCACAGCCAATTGCTG  
CAGCAGCACGGTCACCAGACAGAAATCTTTGCTAAACTGGCTCCAATCCAGGAACAAGCCCCATGTT  
CTGCAGCGTGGCTTCTTTGGTGCCAGCTCTTTGTCTAGCCTCTATGAAAGTAGTCCGGCTCCCCTCCC  
AGTTTCTGGAGCTCTGTTCCCGTATGGGCCGCTCTTTGCCTCACCTTCCCGTGACCCAGCCAGTTGG  
CTGTGCCTTCCACTCCCCTCAGTCTCACAGTGCAGCCTCTGAACTGCTGCGGGAAGCCAGCCTTCATC  
CCCGCGGTATCGCCCTACACTGTCACTCACCCATGGGCGTCTCAGGCGTCTCCATTCTGTCGAGCTCC  
CCAAGTCCCCTGCCCTCGCCAGTAGCCCCAAGCAGTGCCCGCCAGCAGTTCCAGACAGAGGCCAGCA  
GCACGGGTCCACCCCTACCACCCGCTCACCCAGTGCCACGAGCAGACGCCCTCCTCCCTGAGGATCTC  
TCCTAGTTTGGGAGCCTCTGGTGGAGCAAGTAATTGGGATTCTACAGTGACATTTACCATTGAAACC  
TGCAAAGAGACAGATATGCTGAACTACCTCATCGAGTGTTCGACCGAGTTGGAATAGAGGAAAAAAG  
CACCAAAGATGTGCAGCCAGCCAGCAGTCCAGCAGCTTCTGAGCAACATCCGCTCACAGTGCATATCCCA  
TACTGCTTAGTACTACAAGGCTCCCTAACACAGCCAGGTCCTTGCAGCAGCCGCTCTTCTAGTGCCG



[View online »](#)

TATATGCTGTGTAGGAATCTCCCATATGGCTTCATTTCAGGAAGTGGTGAGAACCCTCACCAGGATGAAG  
AAGTGTCAAGCAGATATTTATCCCATTTTACAAGGCCTGGCTCTTGCTGCCAAAGAGTCTCCCTCGA  
CAGTGACTACTTTAAATACCCCTCATGGCACTAGGTGAGCTCTGTGAAACCAAGTTTGGGAAGACACAC  
CCTGTGTGCAATTTGGTTGCTTCTTTGCGGTTGTGTTGCCGAAATCCTTAAGTCTGGCTGTGGGCGGG  
AGCTGCAGAGACTCTCTACTTAGGGCTTTCTTAGCTTCTCAGTCTTGCAGAAGATGATGTTAAAGT  
GGTTGAAAAACTTCTCAGGGCTGCCATTACCCTGGAAAACACTCGTGTGGTTAGCCAATCATTGCAG  
CATTACTTAGAGCTCGGAAGGCAAGAGCTTTTTAAGATTCTGCATAGTATTTTGTAAATGGCGAAACCC  
GTGAGGCTGCTCAGTTACATGGCGGCTGTCTCAATGCCAATATGAAGAAAGCACAGATGCAGACAGA  
TGATAGATTGGTGTCTACAGATGGATTTATGCTGAATTCCTTTGGGTACTGCAGCAGCTAAGTACAAAA  
ATCAAGTTAGAAACAGTTGATCCACGTATATTTTACCCCAAGATGTCGGATTACTCTTCCCAATGATG  
AGACGCGTGTGAATGCAACGATGGAAGATGTGAATGACTGGCTGACTGAACTCTATGGCGATCAGCCTCC  
ATTTTCTGAGCCGAAATCCCTACGGAGTGCTTCTTCTCACCCTGCATGCTCACCACCTCTCTATTCTG  
CCTAGTTGCCGTGCTATATCCGCAGACTCCGGGCTATCCGGGAGCTCAATAGAAGTGTAGAAGATTTGA  
AAAATAATGAAAGCCAATGGAAAGATCCCCACTGGCAACTAGACACCGGAAATGCTGAAGCGCTGTA  
AACTCAGCTTAAGAACTGGTACGGTCAAGGCCTGTGCTGATGCTGGCCTACTTGACGAGAGCTTCTCTG  
AGAAGATGCTGAATTTTATAGGCTTCTCATTACAGTGTGCTCCGCATCCTGGACCCCGCATATCCCG  
ATATAACTGCCTTTAAATTCAGATGTCCCAAGGATTTTGCAGCGTTGCCGTGATTTTATGTAGAAGA  
TGTTGCAGAAATTTTATTTTATTGTACAATACTCTCCCAGGCGCTTTATGAGCCCTGTACTCAGGAT  
ATTGTGATGTTTCTTGTGTGATGTTGTGCAACCAAGAACTACATCCGAAACCCATATTTGGTGGCCAAAC  
TGGTAGAAGTCATGTTTATGACCAACCTGCTGTTTCAGCCACGAACCCAGAAGTTTTTGAATGATTGA  
GAACCATCCTCTCCACCAAGTTGTTGGTACCTCCCTGATGAAGTTTATACAGATGTTGAGCATAACC  
GGAGCCACAGTGAGTTTTATGACAAGTTCACAATTCGCTATCATATTAGCACCATTTTAAAAGCCTTT  
GGCAAAACATAGCTCACCATGGCACCTTTATGGAGGAGTTCAACTCCGGGAAGCAGTTTGTTCGCTATAT  
AAACATGTTGATAAACGACACGACGTTTTTGTCTGATGAAAGTCTGGAGTCTCTGAAGCGAATCCATGAA  
GTGCAGGAAGAGATGAAGAACAAGAAGCAGTGGGACCAGTTGCCCGGGATCAGCAGCAGGCTCGTCAGT  
CTCAGCTTGTCTCAGGATGAGCGTGTGTCCGCTTACCTCGCCCTGGCCACCAGAAACCGTGGACATGTT  
CCACATCCTCACGAAGCAGGTCCAGAAGCCCTTCTCAGACCGGAGCTTGGACCCCGATTGGCTGCAATG  
CTGAACTTTAATCTTTCAGCAACTTTGTGGCCCAAGTCCCGTGACCTGAAAGTTGAAAACCTGAGAAAT  
ACGGCTTTGAACCAAGAAGCTGTTGGACCAACTGACGGATATTTACTTACAGCTGGACTGTGCTCGGTT  
CGCGAAAGCCATTGCTGACGACCAGAGATCCTACAGTAAGGAATTGTTTGAAGAAGTTATTTCAAAGATG  
CGGAAGGCAGGGATCAAATCCACAATAGCAATAGAAAAATTTAAGCTGCTCGCCGAGAAAGTGGAGGAGA  
TAGTGGCCAAGAACGCACGCGCAGAAATCGACTACAGCGACGCTCCTGATGAGTTCAGAGACCCTCTGAT  
GGACACCCTCATGACAGACCCCGTGCAGGCTGCCCTCTGGCACCATCATGGACCGCTCCATCATCCTGCGG  
CACCTGCTCAACTCCCCACGGACCCCTTCAACCGGCAGACGCTGACAGAGAGCATGCTGGAACCAAGTGC  
CAGAACTGAAAGAGCAGATTCAGGCGTGGATGAGAGAGAAACAGAACAGCGATCAC

AGCGGACCGACGCGTACGCGGCCGCTCGAG - GFP Tag - GTTTAA

**Protein Sequence:** >RG226378 representing NM\_001105562  
 Red=Cloning site Green=Tags(s)

```

MEELSADEIRRRRLARLAGGQTSQPTTPLTSPQRENPPGPPPIAASAPGPSQSLGLNVHNMTPATSPIGAS
GVAHRSQSSEGVSSLSSSPSNSLETQSQSLSRSQSMDIDGVSCCKSMSQVDVDSGIENMEVDNDRREKR
SLSDKEPSSSGPEVSEEQALQLVCKIFRVSWKDRDRDVIFLSSLAQFKQNPKEVFSDFKDLIGQILMEVL
MMSTQTRDENPFASLTATSQPIAAAARSPDRNLLNTGSPNPGTSPMFCSVASFGASSLSLYESSPAPT
SFWSSVPMGPSLASPSRAASQLAVPSTPLSPHSAASGTAAGSQSPSPRYRPTVTHPWASSGVLSLSS
PSPPALASSPQAVPASSRQRPSTGPPPLPASPATSRRPSSLRISPLGASGGASNWDYSDFHTIET
CKETDMLNYLIECFDRVGEIEKKAPKMCSPAVSOLLNIRSQCISHTALVQLGSLTQPRSLQQPSFLVP
YMLCRNLPGYFIQELVRTTHQDEEVFKQIFIPILQGLALAAKECSLDSDFKYPLMALGELCETKFKGTH
PVCNLVSLRRLWPKSLSPGCGRELQRLSYLGAFFSFSVFAEDDVKVVVEKYFSGPAITLENTRVVSQSLQ
HYLELGRQELFKILHSILLNGETREAAALSYMAAVVNANMKKAQMOTDDRLVSTDFGMLNFWLWVQLSTK
IKLETVDPTYIFHPRCRITLPNDETRVNATMEDVNDWLTLYGDQPPFSEPKFTECFLLTHAHLHSIL
PSCRRYIRRLRAIRELNRTVEDLKNNESQWKDSPLATRHREMLKRCKTQLKKLVRCACADAGLLDESFL
RRCLNFYGLLIQLLLRIIDPAYPDITLPLNSDVPKVFALPEFYVEDVAEFLFFIVQYSPQALYEPCTQD
IVMFLVVMLCNQYIRNPYLVAKLVEVMFMTNPAVQPRQKFFEMIENHPLSTKLLVPSLMKFYTDVEHT
GATSEFYDKFTIRYHISTIFKSLWQNIHHGTFMEEFNSGKQFVRYINMLINDTTFLDESLESKRHE
VQEEMKNKEQWDQLPRDQQARQSLAQDERVSRSYLALATETVDMFHILTKQVQKPFRLPELGPRLAAM
LNFNLQQLCGPKCRDLKVENPEKYGFEPKLLDQLTDIYLQLDCARFAKAIADDQRSYSKELFEEVISKM
RKAGIKSTIAIEKFKLLAEKVEEIVAKNARAEIDYSDAPDEFRDPLMDTLMTPVRLPSGTIMDRSIIIL
HLLNSPTDPFNQRTLTESMLEPVPPELKEIQAWMREKQNSDH
  
```

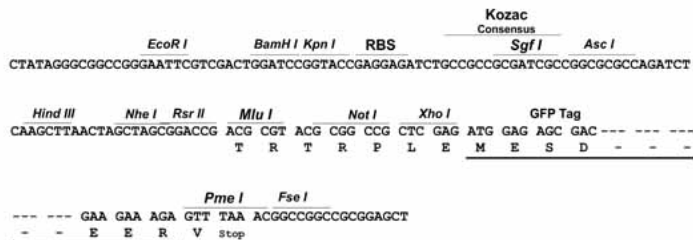
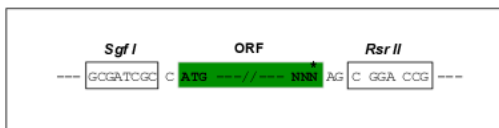
SGPTRRRLE - GFP Tag - V

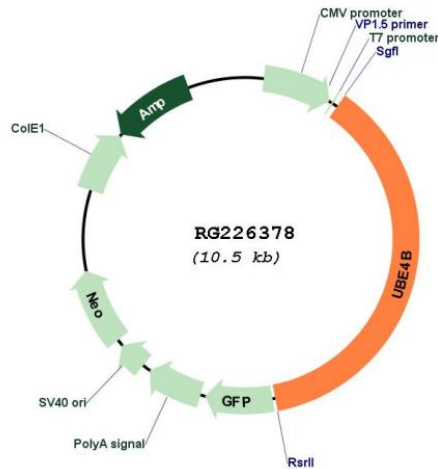
**Restriction Sites:**

SgfI-RsrII

**Cloning Scheme:**

Cloning sites used for ORF Shuttling:



**Plasmid Map:**


**ACCN:** NM\_001105562

**ORF Size:** 3906 bp

**OTI Disclaimer:** Due to the inherent nature of this plasmid, standard methods to replicate additional amounts of DNA in *E. coli* are highly likely to result in mutations and/or rearrangements. Therefore, OriGene does not guarantee the capability to replicate this plasmid DNA. Additional amounts of DNA can be purchased from OriGene with batch-specific, full-sequence verification at a reduced cost. Please contact our customer care team at [custsupport@origene.com](mailto:custsupport@origene.com) or by calling 301.340.3188 option 3 for pricing and delivery.

The molecular sequence of this clone aligns with the gene accession number as a point of reference only. However, individual transcript sequences of the same gene can differ through naturally occurring variations (e.g. polymorphisms), each with its own valid existence. This clone is substantially in agreement with the reference, but a complete review of all prevailing variants is recommended prior to use. [More info](#)

**OTI Annotation:** This clone was engineered to express the complete ORF with an expression tag. Expression varies depending on the nature of the gene.

**Components:** The ORF clone is ion-exchange column purified and shipped in a 2D barcoded Matrix tube containing 10ug of transfection-ready, dried plasmid DNA (reconstitute with 100 ul of water).

**Reconstitution Method:**

1. Centrifuge at 5,000xg for 5min.
2. Carefully open the tube and add 100ul of sterile water to dissolve the DNA.
3. Close the tube and incubate for 10 minutes at room temperature.
4. Briefly vortex the tube and then do a quick spin (less than 5000xg) to concentrate the liquid at the bottom.
5. Store the suspended plasmid at -20°C. The DNA is stable for at least one year from date of shipping when stored at -20°C.

**RefSeq:** [NM\\_001105562.3](#)

RefSeq Size: 5943 bp

RefSeq ORF: 3909 bp

Locus ID: 10277

UniProt ID: [O95155](#)

Cytogenetics: 1p36.22

Protein Pathways: Ubiquitin mediated proteolysis

**Gene Summary:** The modification of proteins with ubiquitin is an important cellular mechanism for targeting abnormal or short-lived proteins for degradation. Ubiquitination involves at least three classes of enzymes: ubiquitin-activating enzymes, or E1s, ubiquitin-conjugating enzymes, or E2s, and ubiquitin-protein ligases, or E3s. This gene encodes an additional conjugation factor, E4, which is involved in multiubiquitin chain assembly. This gene is also the strongest candidate in the neuroblastoma tumor suppressor genes. Alternatively spliced transcript variants encoding distinct isoforms have been found for this gene. [provided by RefSeq, Jul 2008]