

Product datasheet for **RG226357**

AHI1 (NM_001134830) Human Tagged ORF Clone

Product data:

Product Type:	Expression Plasmids
Product Name:	AHI1 (NM_001134830) Human Tagged ORF Clone
Tag:	TurboGFP
Symbol:	AHI1
Synonyms:	AHI-1; dj71N10.1; JBTS3; ORF1
Mammalian Cell Selection:	Neomycin
Vector:	pCMV6-AC-GFP (PS100010)
E. coli Selection:	Ampicillin (100 ug/mL)
ORF Nucleotide Sequence:	>RG226357 representing NM_001134830 Red=Cloning site Blue=ORF Green=Tags(s)

TTTTGTAATACGACTCACTATAGGGCGGCCGGAATTCGTCGACTGGATCCGGTACCGAGGAGATCTGCC
GCC**CGATCGCC**

ATGCCTACAGCTGAGAGTGAAGCAAAGTAAAAACCAAAGTTCGCTTTGAAGAATTGCTTAAGACCCACA
GTGATCTAATGCGTGAAAAGAAAAAAGTGAAGAAAAAAGTTCGAGTCTGAAGAAAAACATCTCACCTGA
CACTATTAGAAGCAATCTTCACTATATGAAAGAACTACAAGTATGATCCCGACACTATTAGAAGCAAT
CTTCCCATATTAAGAACTACAAGTATGATGTAAGTCTGCTAACACTAACAACTGAAGAAGAGCA
CGAGAGTCACTAAAACAAATTGAGGAACACAGTTAGCAACTGAAAATCCTAATGGTATGCTAGTGT
AGAGGAAGACAAACAAGGAAAGCCAAATAAAAAGGTGATAAAGACGGTGCCCGAGTTGACTACACAAGAC
CTGAAACCGGAACTCCTGAGAATAAGGTTGATTCTACACACCAGAAAACACATACAAAGCCACAGCCAG
GCGTTGATCATCAGAAAAGTGAAGGCAAATGAGGGAAGAGAAGAGACTGATTTAGAAGAGGATGAAGA
ATTGATGCAAGCATATCAGTGCCATGTAAGTGAAGAAATGGCAAAGGAGATTAAGAGGAAAAAAGAAAG
AACTGAAAGAACAGTTGACTTACTTTCCCTCAGATACTTTATCCATGATGACAACTAAGCAGTGAAA
AAAGGAAAAAGAAAAGGAAGTCCAGTCTTCTCTAAAGCTGAAACAAGTACATTGACCATCTCTGGTGA
CACAGTTGAAGGTGAACAAAAGAAAGAAATCTTCAGTTAGATCAGTTTCTCAGATTCTCATCAAGATGAT
GAAATAAGCTCAATGGAACAAAGCACAGAAGACAGCATGCAAGATGATACAAAACCTAAACCAAAAAA
CAAAAAAGAAAGACTAAAGCAGTTGCAGATAATAATGAAGATGTTGATGGTATGGTGTTCATGAAATAAC
AAGCCGAGATAGCCCGTTTATCCCAAATGTTGCTTGATGATGACCTTGTCTTGGGAGTTTACATTCAC
CGAACTGATAGACTTAAGTCAGATTTTATGATTTCTCACCAATGGTAAAAATTCATGTGGTTGATGAGC
ATACTGGTCAATATGTCAAGAAAGATGATAGTGGACGGCTGTTTCATCTTACTATGAAAAAGAGAATGT
GGATTATATTCTCCTATTATGACCCAGCCATATGATTTTAAACAGTTAAATCAAGACTCCAGAGTGG
GAAGAACAATTTGATTTAATGAAAATTTCCCTATTTGCTTCGAGGCTCTGATGAGAGTCTAAAGTCA
TCCTGTTCTTGGAGATTCTGATTTCTTAAGCGTGGATGAAATTAAGAATAATTCTGAGGTTCAAAACCA
AGAATGTGGCTTCGAAAATTCCTGGGCATTTCTTAAGCTTCTGGGAGCCAATGAAAATGCAAAACATC



AACTCAAACCTTCGCTTGCAGCTATATTACCCACCTACTAAGCCTCGATCCCCATTAAGTGTGTTGAGG
CATTTGAATGGTGGTCAAATGTCCAAGAAATCATTACCCATCAACACTGTACGTAAGTAAAGAGGACT
GAAAGTCCAGACTGTATAAAGCCATCTTACCGCTCTATGATGGCTCTTCAGGAGGAAAAAGGTAACCA
GTGCATTGTGAACGTACCATGAGTCAAGCTCAGTAGACACAGAACCTGGATTAGAAGAGTCAAAGGAAG
TAATAAAGTGGAAACGACTCCCTGGGCAGGCTTGCCGTATCCCAAACAACACCTCTTCTCACTAAATGC
AGGAGAACGAGGATGTTTTGTCTTGATTTCTCCACAATGGAAGAATATTAGCAGCAGCTTGTGCCAGC
CGGATGGATATCCAATTTTTATATGAAATTCCTTCTGGACGTTTCATGAGAGAATTGTGTGCCACC
TCAATATCATTATGATCTTTCCTGGTCAAAGATGATCACTACATCCTTACTTCATCATCTGATGGCAC
TGCCAGGATATGGAAAAATGAAATAAACAAATAACAATACTTTCAGAGTTTTACCTCATCCTTCTTTTGT
TACACGGCTAAATTCATCCAGCTGTAAGAGAGCTAGTAGTTACAGGATGCTATGATTCCATGATACGGA
TATGGAAAGTTGAGATGAGAGAAGATTCTGCCATATTGGTCCGACAGTTTGTGTTACAAAAAGTTTTAT
CAACTCACTTTGTTTTGATACTGAAGGTCATCATATGTATTGAGGAGATTGTACAGGGGTGATTGTTGTT
TGGAATACCTATGTCAAGATTAATGATTTGGAACATTCAGTGCACCCTGGACTATAAATAAGGAAATTA
AAGAACTGAGTTAAGGAATCCAATAAGTTATTTGGAGATTCATCCAATGGAAAACGTTTGTAAAT
CCATACCAAAGACAGTACTTTGAGAATTATGGATCTCCGGATATTAGTAGCAAGGAAGTTTGTAGGAGCA
GCAAATATCGGGAGAAGATTCATAGTACTTTGACTCCATGTGGGACTTTTCTGTTTGTGGAAGTGAGG
ATGGTATAGTGTATGTTTGAACCCAGAAACAGGAGAACAAGTAGCCATGTATTCTGACTTGCCATTCAA
GTCACCCATTCGAGACATTTCTTATCATCCATTTGAAAATATGGTTGCATTCTGTGCATTTGGGCAAAAT
GAGCCAATTTCTGTATATTTACGATTTCCATGTTGCCAGCAGGAGGCTGAAATGTTCAAACGCTACA
ATGGAACATTTCCATTACCTGGAATACACCAAAGTCAAGATGCCCTATGTACCTGTCCAAAACACTACCCA
TCAAGGCTCTTTTCAGATTGATGAATTTGTCCACACTGAAAGTTCTTCAACGAAGATGCAGCTAGTAAAA
CAGAGGCTTGAACCTGTCACAGAGGTGATACGTTCCCTGTGCTGCAAAAGTCAACAAAAATCTCTCATTTA
CTTACCACCAGCAGTTTCCCTCACACAGTCTAAGTTAAAGCAGTCAAACATGCTGACCGCTCAAGAGAT
TCTACATCAGTTTGGTTTCACTCAGACCGGATTATCAGCATAGAAAGAAAGCCTTGTAAACCATCAGGTA
GATACAGACCAACGGTAGTGGCTCTTTATGACTACACAGCGAATCGATCAGATGAACTAACCATCCATC
GCGGAGACATTATCCGAGTGTTTTTCAAAGATAATGAAGACTGGTGGTATGGCAGCATAGGAAAGGGACA
GGAAGGTTATTTTCCAGCTAATCATGTGGCTAGTGAACACTGTATCAAGAACTGCCTCCTGAGATAAAG
GAGCGATCCCCTCCTTTAAGCCCTGAGGAAAAAACTAAAATAGAAAAATCTCCAGCTCCTCAAAGCAAT
CAATCAATAAGAACAAGTCCAGGACTTCAGACTAGGCTCAGAATCTATGACACATTCTGAAATGAGAAA
AGAACAGAGCCATGAGGACCAAGGACACATAATGGATACACGGATGAGGAAGAACAAGCAAGCAGGCAGA
AAAGTCACTCTAATAGAG

ACGCGTACGCGGCCGCTCGAG – GFP Tag – GTTTAA

Protein Sequence: >RG226357 representing NM_001134830
 Red=Cloning site Green=Tags(s)

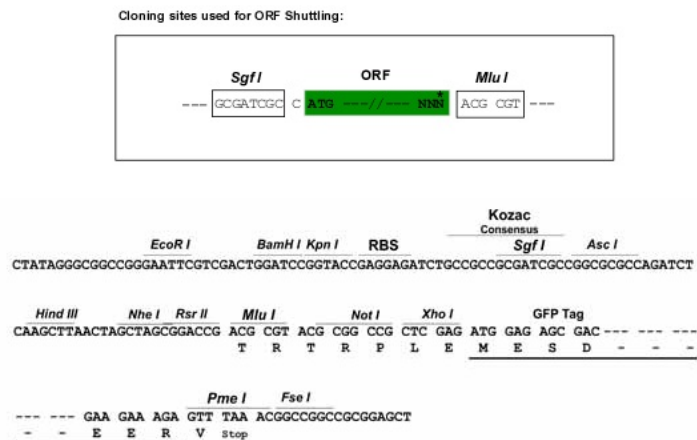
MPTAESEAKVKTkvrFEELLKTHSDLMREKKLKKLVRSEENISPDtIRSNLHYMKETTSDDPDTIRSN
 LPHIKETTSDVSAANTNLLKSTRVTKNKL RNTQLATENPNGDASVEEDKQGKPNKKVIKTVPQLTTQD
 LKPETPENKVDSTHQKTHTKPQPGVDHQKSEKANEGREETDLEEDEELMQAYQCHVTEEMAKEIKRKIRK
 KLKEQLTYFPSTLFDHDKLSSEKRRKKKEVPVFSKAETSTLTI S GDTVEGEQKKESSVRSVSSDSSHQDD
 EISSMEQSTEDSMQDDTKPKPKTKKKTKAVADNNEDVDGDGVHEITSRDSPVYPKCLLDDDLVLGVYIH
 RTDRLKSDFMISHPMVKIHVVDEHTGQYVKKDDSGRPVSSYYEKENVDYILPIMTQPYDFKQLKSRLPEW
 EEQIVFNENFPYLLRGSDESPKILFFEILDFLSVDEIKNNSEVQNQECGFRKIAWAFKLLGANGNANI
 NSKLRLQLYYPPTKPRSPLSVVEAFEWWSKCPRNHYPSTLYVTVRGLKVPDCIKPSYRSMALQEEKGP
 VHCERHHSSVDTEPGLLESKEVIKWKRLPGQACRIPNHLFSLNAGERGCFLDFSHNGRILAAACAS
 RDGYPIILYEIPSGRFMREL CGHLNIIYDLSWSKDDHYILTSSSDGTARIWKNEINNTNTFRVLPHPFSV
 YAKFHFAVREL VVTGCYDSMIRIWKVEMREDSAILVRQFDVHKSFINSLCFDTEGHMYSGDCTGVIVV
 WNTYVKINDLEHSVHHWTINKEIKETEFKGIPISYLEIHPNGKRLLIHTKDSTLRIMDLRILVARKFVGA
 ANYREKIHSTLTPCGTFLFAGSEdGIVYVWNPETGEQVAMYSdLFPKSPIRDISYHPFENMVAFAFGQN
 EPILLYIYDFHVAQQAEMFKRYNGTFPLPGIHQSdALCTCPKLPHQGSFQIDEFVHTESSTKMQLVK
 QRLETVTEVIRSCAAKVKNLSFTSPPAVSSQSKLKQSNMLTAQEILHQFGFTQTGIISIERKPCNHQV
 DTAPTVALYDYTANRDELTIHRGDIIRVFFKDNEdWYGSIGKQGEYFANHVASETLYQELPPEIK
 ERSPLSPEEKTKIEKSPAPQKQSINKNKSDQFRLGSESMTHSEMRKEQSHEDQGHIMDRMRKNKQAGR
 KVTLIE

TRTRPLE - GFP Tag - V

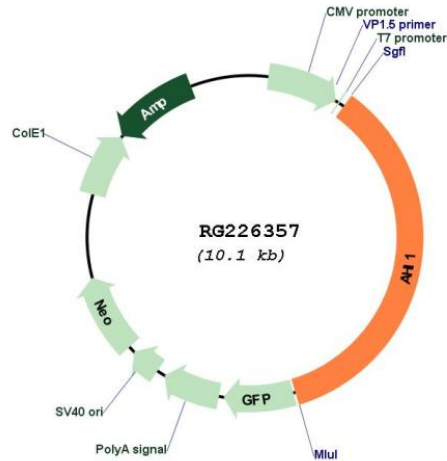
Restriction Sites:

SgfI-MluI

Cloning Scheme:



Plasmid Map:



ACCN: NM_001134830

ORF Size: 3588 bp

OTI Disclaimer: The molecular sequence of this clone aligns with the gene accession number as a point of reference only. However, individual transcript sequences of the same gene can differ through naturally occurring variations (e.g. polymorphisms), each with its own valid existence. This clone is substantially in agreement with the reference, but a complete review of all prevailing variants is recommended prior to use. [More info](#)

OTI Annotation: This clone was engineered to express the complete ORF with an expression tag. Expression varies depending on the nature of the gene.

Components: The ORF clone is ion-exchange column purified and shipped in a 2D barcoded Matrix tube containing 10ug of transfection-ready, dried plasmid DNA (reconstitute with 100 ul of water).

Reconstitution Method:

1. Centrifuge at 5,000xg for 5min.
2. Carefully open the tube and add 100ul of sterile water to dissolve the DNA.
3. Close the tube and incubate for 10 minutes at room temperature.
4. Briefly vortex the tube and then do a quick spin (less than 5000xg) to concentrate the liquid at the bottom.
5. Store the suspended plasmid at -20°C. The DNA is stable for at least one year from date of shipping when stored at -20°C.

RefSeq: [NM_001134830.1](#), [NP_001128302.1](#)

RefSeq Size: 5502 bp

RefSeq ORF: 3591 bp

Locus ID: 54806

UniProt ID: [Q8N157](#)

Cytogenetics: 6q23.3

Gene Summary:

This gene is apparently required for both cerebellar and cortical development in humans. This gene mutations cause specific forms of Joubert syndrome-related disorders. Joubert syndrome (JS) is a recessively inherited developmental brain disorder with several identified causative chromosomal loci. Alternatively spliced transcript variants encoding different isoforms have been identified. [provided by RefSeq, Oct 2008]