

Product datasheet for **RG226341**

KCC2 (SLC12A5) (NM_001134771) Human Tagged ORF Clone

Product data:

Product Type:	Expression Plasmids
Product Name:	KCC2 (SLC12A5) (NM_001134771) Human Tagged ORF Clone
Tag:	TurboGFP
Symbol:	SLC12A5
Synonyms:	DEE34; EIEE34; EIG14; hKCC2; KCC2
Mammalian Cell Selection:	Neomycin
Vector:	pCMV6-AC-GFP (PS100010)
E. coli Selection:	Ampicillin (100 ug/mL)
ORF Nucleotide Sequence:	>RG226341 representing NM_001134771 Red=Cloning site Blue=ORF Green=Tags(s)

TTTTGTAATACGACTCACTATAGGGCGGCCGGAATTCGTCGACTGGATCCGGTACCGAGGAGATCTGCC
GCC**CGATCGCC**

ATGAGCCGCAGGTTACGGTCACCTCGCTGCCCCCGCAGGGCCCGCCAGAAGCCCTGACCCAGAGTCCC
GCCGGCATTTCGGTCGCAGACCCCGCCACCTCCCGGGGAAGACGTCAAAGGTGATGGCAACCCCAAGGA
AAGCAGTCCCTTCATCAACAGCACCCGACACAGAGAAGGAAAGGAGTATGATGGCAAGAACATGGCCTTG
TTTGAGGAGGAGATGGACACCAGCCCTATGGTGTCTCCTTGCTCAGTGGCCTGGCCAACACCAACCC
TGCCCCAGGGAAGTAGGGAGCATGAAGAGGCAGAAAACAATGAGGGTGGAAAAAGAAGCCGGTGCAGGC
CCCACGCATGGGCACCTTCATGGGCGTGTACCTGCCGTGCCTGCAGAACATCTTTGGCGTCATCCTCTTC
CTGCGGCTCACCTGGGTGGTGGCATTGACGGCATCATGGAGTCTTCTGCATGGTGTTCATCTGCTGCT
CCTGTACGATGCTCACGGCCATCTCCATGAGTGAATTGCAACGAATGGTGTGTGCCTGCTGGTGGCTC
CTACTACATGATTTCCAGGTCTCTGGGCCAGAGTTTGGGGTGGCGTGGGCTCTGCTTACCTGGGC
ACTACCTTTCAGGAGCCATGTACATCCTGGGCACCATCGAAATCCTGCTGGCTTACCTCTCCAGCCA
TGGCCATCTTCAAGGCAGAAGATGCCAGTGGGGAGGCAGCAGCCATGCTGAACAACATGCGTGTTCACGG
CACCTGTGTGCTCACCTGCATGGCCACTGTGGTGTGGTGTCAAGTATGTCAACAAGTTTGCCTTCCGACC
CACCCAACTTCCCGATCTGCCTCCTGGGTAAACCGCACGCTGTCTGCCATGGCTTTGATGTCTGTGCCAA
GCTGGCTTGGGAAGGAAATGAGACGGTGACCACACGGCTATGGGCTTTTCTGCTCCTCTCGCTTCTCCTC
AACGCCACCTGTGATGAATACTTCAACCCGAAACAATGTCACAGAGATCCAGGGCATCCCTGGTGTGCCA
GTGGCCTCATCAAGAGAACCTCTGGAGCTCCTACCTGACCAAGGGCGTATTGTGGAGAGGAGTGGGAT
GACCTCGTGGGCTGGCCGATGGCACTCCTATCGACATGGACCACCTTATGTCTTCAGTGATATGACC
TCCTACTTCAACCCTGCTGGTGGCATCTACTTCCCTCAGTCACAGGGATCATGGCTGGTTCTAACCCGT
CTGGGGACCTGAGGGATGCCAGAAGTCAATCCCACTGGCACCATCCTGGCCATCGCCACCACCTCTGC
TGCTACATCAGCTCCGTTGTTCTGTTGGGCTGCATTGAGGGGTGCTCCTGCGGACAAGTTTGGC



[View online »](#)

GAAGCTGTGAATGGCAACCTCGTGGTGGGCACTCTGGCCTGGCCATCTCCATGGGTAATTGTTCATCGGAT
 CCTTCTTCCACCTGTGGGGCTGGGCTGCAGAGCCTCACGGGGGCCACGCCTGCTGCAGGCCATCTC
 GAGGGATGGCATTGTGCCCTTCTGCAGGCTTTGGCCATGGCAAGGCCAATGGAGAGCCGACCTGGGCC
 CTGCTCCTGACTGCCTGCATCTGCGAGATTGGCATCCTCATTGCATCCCTCGACGAGGTGGCCCCATCC
 TCTCTATGTTCTTCTGATGTGTACATGTTTGTGAATCTGGCCTGTGCAGTGCAGACGCTGTGAGGAC
 ACCCAACTGGAGGCCACGCTTTCGATATTACCACTGGACCCTCTCCTTCTGGGCATGAGCCTCTCCCTG
 GCCCTCATGTTTCATCTGCTCCTGGTATTATGCACTGGTAGCCATGCTCATTGCTGGACTCATCTACAAGT
 ACATTAGTACCGTGGGGCAGAGAAGGAGTGGGGCGATGGGATACGAGGCTGTCTCTCAGTGGCGCTCG
 CTATGCCCTCTTACGCCCTGGAGGAAGGGCCCCACACCAAGAAGTGGAGGCCACAGCTGCTGGTGTCTG
 GTGCGTGTGGACCAAGACCAGAATGTGGTGCACCCACAGCTGCTCTCACTGACCTCCCAGCTGAAGGCAG
 GGAAGGGCCTGACCATCGTGGGCTCTGTCTTGGGGCACCTTTCTGGAAAATCATCCACAGGCCACGC
 GGCAGAAGAGTCTATCAGGCGCTGATGGAGGCAGAGAAGGTGAAGGGCTTCTGCCAGGTGGTGTCTCC
 TCCAATTGCGTGTGGCGTGTCCCATCTGATCCAGTCCGGGGCCTCGGGGGCTGCAGCACAACTG
 TGCTTGTGGCTGGCCCCCACTGGCCGACAGGAAGATCATCAGACGTGGAGGAAGTTCATTGAGCT
 GGTCCGGAAACACAGCTGGCCACTTAGCCCTGCTGGTACCAAGAAGCTTTCCATGTTTCTGGGAAC
 CCTGAGCGCTTCTGAGGGCAGCATCGACGTTTGGTGGATTGTGCACGATGGAGGCATGCTCATGCTGC
 TGCCCTTCTGCTGCGGCACCACAAGGTCTGGCGAAGTCAAGATGCGTATCTTCACTGTGGCCAGAT
 GGATGACAATAGCATCCAGATGAAGAAGGATCTGACCACATTTCTGTATCATTTACGCATCACTGCGGAG
 GTCGAGGTGGTGGAGATGCATGAGAGCGACATCTCAGCTTACACCTATGAGAAGACGTTGGTGTGGAGC
 AGCGTTCCAGATCCTCAAACAGATGCATTTAACCAAGAATGAGCGGGAGCGGGAGATCCAGAGTATCAC
 AGATGAGTCACGAGGCTCAATCCGGAGAAAATCCAGCCAACACGCGCTCCGCTGAACGTCCAGAA
 GAGACGGCTGGTACAGTGAAGAGAAGCCAGAGGAGGAGTGCAGCTGATCCACGATCAGATGCTCCCA
 GCTGCCACGACGCTCCCGTCCCAGGGAGGAGCCTGAGGGGAAGGGGAGACAGATCCGGAAAGT
 GCATCTACCTGGACCAAGGACAAGTCCGTGGCAGAGAAGAATAAGGGGCCAGTCTGTCTCTGAG
 GGCATCAAGGACTTCTTACGATGAAGCCGGAGTGGGAGAACTGAACCAAGTCCAACGTGCGGCGCATGC
 ACACGGCCGTGCGGCTGAACGAGGTTCATCGTGAAGAAAATCCCGGGACGCCAAGCTTGTGTTTGTCAACAT
 GCCTGGGCTCCCGCAACCGCAATGGTGTGAAAATACATGGAGTTTCTCGAGGTCCTCACAGAGCAC
 CTGACCGGGTGTGCTGGTCCGCGGGCGGCCGCGAGGTCATCACCATCTACTCC

ACGCGTACGCGGGCCGCTCGAG – GFP Tag – GTTTAA

Protein Sequence:

>RG226341 representing NM_001134771
 Red=Cloning site Green=Tags(s)

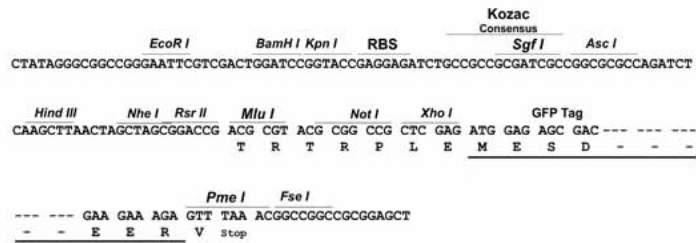
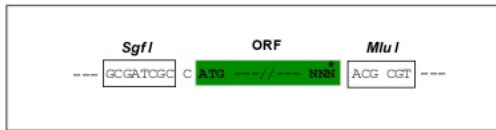
MSRRFTVTSLPPAGPARSPDPESRRHSVADPRHLPGEDVKGDGNPKESSPFINSTDEKKEYDGNMML
 FEEEMDTPMVSSLLSGLANYTNLPQGSREHEEAENNEGGKKPVQAPRMGTFMGVYLPCLQNIQFVILF
 LRLTWVGIAGIMESFCVMFICCSCTMLTAISMSAIATNGVVPAGGSYYMISRSLGPEFGGAVGLCFYLG
 TTFAGAMYILGTIEILLAYLFPAMAIKFAEDASGEAAAMLNMRVYGTCLVTCMATVVVFGVKYVNFAL
 VFLGCVILSILAIYAGVIKSAFDPNPFICLLGNRTLNRHGFVCAKLAWEGETVTTTLWGLFCSSRFL
 NATCDEYFTRNNVTEIQGIPGAASGLIKENLWSSYLTKGVIVERSGMTSVGLADGTPIDMDHPYVFSMT
 SYFTLLVGIYFSPVTGIMAGSNRSGDLRDAQSIPTGTILAIATTSAVYISSVVLFGACIEGVVLRDKFG
 EAVNGNLVVGTLAWPSPWVIVIGSFFSTCGAGLQSLTGAPRLLQAI SRDGIVPFLQVFGHGKANGEPTWA
 LLLTACICEIGILIASLDEVAPILSMFFLMCYMFVNLACAVQTLRLTPNWRPRFRYYHWLTSFLGMSLCL
 ALMFICSWYYALVAMLIAGLIYKYIEYRGAKEKWDGIRGLSLSAARYALLRLEEGPHTKNWRPQLLVL
 VRVDQDQNVVHPQLLSLTSQKAGKGLTIVGSVLEGTFLNHPQAQRAEESIRRLMEAEKVKGCQVVIS
 SNLRDGVSHLIQSGGLGGLQHNTVLVGWPRNWRQKEDHQTWRNFIELVRETTAGHLALLVTKNVSMFPGN
 PERFSEGSIDVWVIVHDGMLMLLPFLLRHHKVVWRKCKMRIFTVAQMDDNSIQMKKDLTFLYHLRITAE
 VEVVEMHESDISAYTYEKTLMVEQRSQILKQMHLLTKNEREREIQSITDESRSIRRRKNPANTRLRLNVPE
 ETAGDSEEKPEEEVQLIHDQSAPSCSPSSPSPGEEPEGEGETDPEKVHLTWTKDKSVAEKNKGPSPVSSE
 GIKDFFSMKPEWENLNQSNVRRMHTAVRLNEVIVKSRDAKLVLNMPGPPRNRNGDENYMEFLEVLTEH
 LDRVMLVRGGGREVITIYS

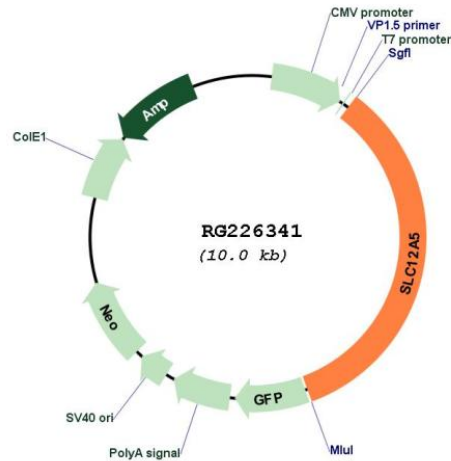
TRTRPLE – GFP Tag – V

Restriction Sites: SgfI-MluI

Cloning Scheme:

Cloning sites used for ORF Shutting:



Plasmid Map:


ACCN: NM_001134771

ORF Size: 3417 bp

OTI Disclaimer: The molecular sequence of this clone aligns with the gene accession number as a point of reference only. However, individual transcript sequences of the same gene can differ through naturally occurring variations (e.g. polymorphisms), each with its own valid existence. This clone is substantially in agreement with the reference, but a complete review of all prevailing variants is recommended prior to use. [More info](#)

OTI Annotation: This clone was engineered to express the complete ORF with an expression tag. Expression varies depending on the nature of the gene.

Components: The ORF clone is ion-exchange column purified and shipped in a 2D barcoded Matrix tube containing 10ug of transfection-ready, dried plasmid DNA (reconstitute with 100 ul of water).

Reconstitution Method:

1. Centrifuge at 5,000xg for 5min.
2. Carefully open the tube and add 100ul of sterile water to dissolve the DNA.
3. Close the tube and incubate for 10 minutes at room temperature.
4. Briefly vortex the tube and then do a quick spin (less than 5000xg) to concentrate the liquid at the bottom.
5. Store the suspended plasmid at -20°C. The DNA is stable for at least one year from date of shipping when stored at -20°C.

RefSeq: [NM_001134771.1](#), [NP_001128243.1](#)

RefSeq Size: 6066 bp

RefSeq ORF: 3420 bp

Locus ID: 57468

UniProt ID: [Q9H2X9](#)

Cytogenetics: 20q13.12

Protein Families: Transmembrane

Gene Summary: K-Cl cotransporters are proteins that lower intracellular chloride concentrations below the electrochemical equilibrium potential. The protein encoded by this gene is an integral membrane K-Cl cotransporter that can function in either a net efflux or influx pathway, depending on the chemical concentration gradients of potassium and chloride. The encoded protein can act as a homomultimer, or as a heteromultimer with other K-Cl cotransporters, to maintain chloride homeostasis in neurons. Alternative splicing results in two transcript variants encoding different isoforms. [provided by RefSeq, Sep 2008]