

Product datasheet for **RG226338**

ARAP1 (NM_001135190) Human Tagged ORF Clone

Product data:

Product Type: Expression Plasmids
Product Name: ARAP1 (NM_001135190) Human Tagged ORF Clone
Tag: TurboGFP
Symbol: ARAP1
Synonyms: CENTD2
Mammalian Cell Selection: Neomycin
Vector: pCMV6-AC-GFP (PS100010)
E. coli Selection: Ampicillin (100 ug/mL)
ORF Nucleotide Sequence: >RG226338 representing NM_001135190
 Red=Cloning site Blue=ORF Green=Tags(s)

TTTTGTAATACGACTCACTATAGGGCGGCCGGAATTCGTCGACTGGATCCGGTACCGAGGAGATCTGCC
 GCC**CGATCGCC**

ATGACCAAGAAGGAGGAGCCCCACCGAGCCGAGTCCCACGGGCCGTGCGCGTGGCCAGTCTGCTGAGCG
 AGGGAGAGGAAGTGTCTGGGGACGACCAAGGGGATGAGGAAGAGGATGACCACGCCTATGAGGGCGTCCC
 CAATGGCCGATGGCATAACCAGCAGCCTGAGCTTGTCTTGGCCAGCACAATAGCTGCGCCACACCCCATG
 GACGGGCCGCTGGGGCTCCACCCCGTCACACCAGTCATCAAGGCTGGCTGGTGGACAAGAACCAC
 CGCAGGGATCTTACATCTATCAGAAACGATGGGTGAGACTGGATACTGATCACCTGCGATACTTTGACAG
 TAAACAAGGACGCTTACTCTAAGCGCTTTATCTCTGTGGCCTGCATCTCCACGTGGCTGCCATCGGGGAC
 CAGAAGTTTGAAGTGATCACAACAACCGAACCTTTGCCTTCCGGGCAGAGAGTGATGTGGAGCGGAAGG
 AGTGGATGCAGGCCCTGCAGCAGGCCATGGCTGAGCAGCGTGCCCGGGCCCGGCTCTCTAGCGCTTATCT
 GCTGGGAGTTCAGGCTCAGAGCAGCCTGACCGCGCTGGCAGCCTGGAGCTTCGTGGCTTCAAGAATAAG
 CTGTACGTGGCCGTGGTGGGGACAAAGTGCAGCTCTACAAGAATCTAGAGGAGTACCACCTGGGCATTG
 GCATCACCTTCATCGACATGAGCGTGGGCAACGTGAAGGAAGTGGACCGGCGCAGCTTCGACCTCACCAC
 GCCCTACCGCATCTTCAGCTTCTCTGCTGACTCAGAGCTAGAGAAGGAGCAGTGGTTGGAGGCCATGCAG
 GGAGCCATCGCTGAGGCCCTGTACTACCTCGGAGGTGGCCGAGCGCATCTGGGCTGCAGCCCCAACAGGT
 TCTGTGCTGACTGCGGGGCTCCTCAGCCTGACTGGGCTCCATCAACCTCTGTGTTGTTATCTGCAAGCG
 CTGTGCAGGGGAGCACCGTGGCCTGGGCGCTGGCGTCTCCAAGGTGCGGAGCCTGAAGATGGACAGGAAG
 GTGTGGACAGAAACACTTATCGAGGCCCTGTGTGCTGCAGTACCACCACAGACCTGGCTGAGACCCAGG
 CGCTCCTGGGCTGTGGGCTGGGATCAACTGCTTCTCGGGGACCCCTGAGGCCCCACGCCCTGGCTCT
 TGCAGAGCAGGGGGCAGACGCTGCAGATGGAATTCCTCGGAACAACCGGACCACAGAGGTGCCTCGG
 CTGGACTCGATGAAGCCCTGGAAAAGCACTACTCAGTTGCTCCTGCCACCGTGAACACAGTGGCTTCC
 TCTACAAGACTGCCTCTGCCGGAAGCTGCTACAGGACCGCCGGGCCCGGAAGAGTTACGCCGGCGCTG
 GTGTGCTTGGTACGGGCTCTGAGCTACTTTGAGAATGAGCGGGCAGTGACCCCAATGGAGAGATT



[View online >](#)

CGGGCCAGCGAGATTGTGTGCCTGGCAGTGCCCCCTCCTGACACCCATGGCTTTGAGCACACCTTTGAGG
 TGTACACGGAGGGAGAACGGCTGTACCTGTTTGGGCTGGAGAGTGCAGGAGCAGGCTCATGAGTGGGTCAA
 GTGTATTGCTAAGGCATTCGTGCCTCCCCTAGCCGAGGATCTGCTGGCCCGGATTTTGGAGCGGCTGGGA
 CGCCTACCTACAAGCTGGCCTGAGCCTACAGCGGGCCAGGAGGGCTGGTTCTCTCAGTGGCTCGG
 AGCTCCGTGTGTCTCCCGGAGGGGCCCTGCGAAGAGCCGCTGCAACTACGAAACTGCAGGAGCTTTC
 CATCCAGGGGGACAGTGAGAACCAGGTGCTGGTGTGGTGGAGCGAAGGAGGACACTGTACATACAGGGC
 GAGCGGGGCTGGACTTCATGGTTGGCTGGGGGCCATCCAGAAAGCAGCCGACAGTATCGGGGACACGC
 TGTCCGAGCAGCAGCTTGGGGACTCGGATATCCCGGTGATCGTGTACCGCTGTGTGGACTACATCAGCA
 GTGCGGCCTGACCTCCGAGGGCATCTACCGAAGTGTGGGACAGCATCGAAGACACAGCGCTGCTGGAG
 AGCCTGCGGCAGGATGCGCGCTCTGTGCACCTCAAGGAGGGCGAGCAGCAGTGGATGATGTTTCTCGG
 CGCTCAAGCGCTTCTGCGGACCTGCCTGATGGGCTTCTACTCGCGCCAGCGCTAACCTGGCTGGA
 GGCCTCAGAGATTGAGGACGAGGAGGAGAAGGTCTCCAGTACCAGAGCTGCTGGTGGGCTGCCCT
 GTCAACCGGGCCACAGTGAAGGCCCTTATCAGCCACCTGTACTGTGTTTCTCAGTGTCTCAGACACGAAC
 AGATGAACGTGCACAACCTGGCAATTGTGTTTGGGCCACGCTTCCAGACAGATGGCAGGACTACAA
 GGCTGGCCGTGTGGTGAAGACCTATTAACCACTATGTGGTGGTGTGTTAGTGTGGATGAGGAAGAGCTC
 AGGAAGCAGCGGAGGAGATCACTGCCATTGTGAAGATGCGCGTGGCTGGCACTGCCAGTGGGACCCAGC
 ATGCCGGTGACTTCATCTGCACAGTGTATCTGGAAGAGAAGAAGGCAGAGACTGAGCAGCATATCAAGGT
 CCCAGCATCCATGACTGCTGAGGAGCTCACCTGGAGATCCTGGATCGCCGGAACGTGGGCATCAGGGAG
 AAGGACTATTGGACCTGCTTTGAGGTCAACGAGAGGGAGGAGGCAGAGCGCCCTGCACCTTTGCGGAGA
 AGGTGTGCCATCTGCACGGGCTGGGCACGGACAGCCACCTGGTGGTGAAGAAGCACCAGGCCATGGA
 GGCCATGCTGTACCTGGCCAGCCGTGTCGGTGACACCAAGCATGGCATGATGAAGTCCGTGAGGAC
 CGCAGCCTCCTGGGCTGGGCTGCCCTCAGTGGCTTCCACGATCGCTACTTCTCCTCAACAGCAGCT
 GCTTGGGCTCTACAAGGAGTCCGGAGTCAACCGCCTGAGAAGGAGTGGCTATTAAGATCTCAAAGT
 CTACTGGGAGTGAAGAAGAACTCAGGCCACCCACCTGCTGGGCTTCCAGTGGTGCATGAGACAGAG
 AAACATGAGAAGCAGCAGTGGTACCTCTGCTGTGACACACAGATGGAGCTCCGGGAGTGGTTCGCTACCT
 TTCTGTTTGTGCAGCATGACGGCCTGGTGTGGCCTCAGAGCCCTCACGCGTGTCCCGGGCAGTGCCTGA
 GGTCCGGCTGGGTAGTGTGCTACTGATCCCCTTCGAGGTAGTAAAAATGAAATGCGCCGGAGTGTGGCT
 GCCTTACCAGGACCTCTGTCTTCTGCGCAACGTC

AGCGGACCGACGCGTACGCGGCCGCTCGAG - GFP Tag - GTTTAA

Protein Sequence:

>RG226338 representing NM_001135190
 Red=Cloning site Green=Tags(s)

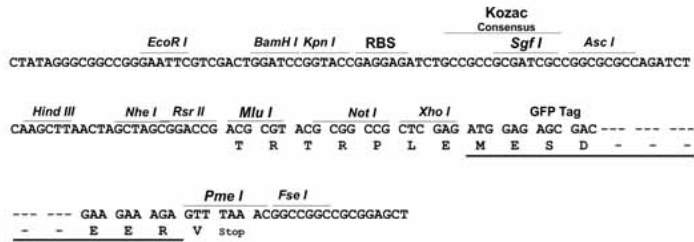
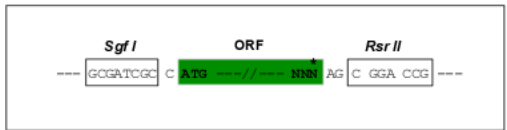
MTKKEPPPSRVPRAVRVASLLSEGEELSGDDQGDDEEDDHAYEGVPPNGGWHTSSLSLSLPSTIAAPHPM
 DGPPGGSTPVPVIKAGWLDKNPPQGSYIYQKRWRDLTDHLRYFDSNKAAYSKRFSVACISHVAAIGD
 QKFEVITNNRTFAFRAESDVERKEWMQALQQAMAEQRARARLSSAYLLGVPGSEQPDRAGSLELRGFKNK
 LYVAVVGDVKVQLYKNLEEYHLGIGITFIDMSVGNVKEVDRRSFDLTPYRIFSFSAADSELEKEQWLEAMQ
 GAIAEALSTSEVAERIWAAPNRFACDCGAPQPDWASINLCVVICRKCAGEHRGLGAGVSKVRSCLKMDRK
 WWTETLIEALCAAVTTDLAETQALLGCGAGINCFSGDPEAPTPLALAEQAGQTLQMEFLRNNRTTEVPR
 LDSMKPLEKHYSVVLPTVSHSGFLYKTASAGKLLQDRRAREEFRRWCVLGDGVL SYFENERAVTPNGEI
 RASEIVCLAVPPPDTGHFEHTFEVYTEGERLYLFGLESAEQAHEWVKCIAKAFVPLAEDLLARDFERLG
 RLPYKAGLSLQRAQEGWFSLSGSELRAVFPEGPCPEEPLQLRKLQELSIQGDSENQVLLVERRRTLYIQG
 ERRLD FMGWLGAIQKAAASMGDTLSEQQLGSDIPVIVYRCVDYITQCGLTSEGIYRKCQTSKTRQLLE
 SLRQDARSVHLKEGEQHVDVSSALKRFLRDL PDGLFTRAQRLTWLEASEIEDEEEKVSRYRELLVRLPP
 VNRATVKALISHLYCVQCFSDTNQMNHNLAIVFGPTLFQTDGQDYKAGRVVDELINHYVVVFVSDDEEEL
 RKQREEITAIIVKMRVAGTASGTQHAGDFICTVYLEEKKAETEQHIVKVPASMTAEELTLEILD RRNVGIRE
 KDYWTCFEVNEREEAERPLHFAEKVLPILHGLGTDShLVVKKHQAMEAMLLYLASRVGDTKHGMMKFRED
 RSLGLGLPSGGFHDRYFILNSSCLRLYKEVRSRPEKEWPIKSLKVYLGVKKLRPPTCWGFTVVHETE
 KHEKQQWYLCCDTQMELREWFATFLFVQHDGLVWPSEPSRVSRAVPEVRLGSVSLIPLRGSSENMRRSVA
 AFTADPLSLLRNV

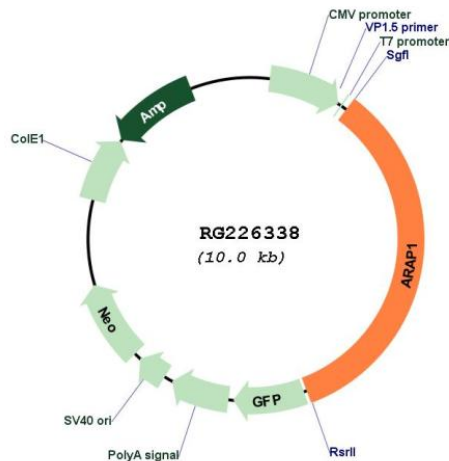
SGPTRRRLE - GFP Tag - V

Restriction Sites: SgfI-RsrII

Cloning Scheme:

Cloning sites used for ORF Shuttling:



Plasmid Map:


ACCN: NM_001135190

ORF Size: 3399 bp

OTI Disclaimer: The molecular sequence of this clone aligns with the gene accession number as a point of reference only. However, individual transcript sequences of the same gene can differ through naturally occurring variations (e.g. polymorphisms), each with its own valid existence. This clone is substantially in agreement with the reference, but a complete review of all prevailing variants is recommended prior to use. [More info](#)

OTI Annotation: This clone was engineered to express the complete ORF with an expression tag. Expression varies depending on the nature of the gene.

Components: The ORF clone is ion-exchange column purified and shipped in a 2D barcoded Matrix tube containing 10ug of transfection-ready, dried plasmid DNA (reconstitute with 100 ul of water).

Reconstitution Method:

1. Centrifuge at 5,000xg for 5min.
2. Carefully open the tube and add 100ul of sterile water to dissolve the DNA.
3. Close the tube and incubate for 10 minutes at room temperature.
4. Briefly vortex the tube and then do a quick spin (less than 5000xg) to concentrate the liquid at the bottom.
5. Store the suspended plasmid at -20°C. The DNA is stable for at least one year from date of shipping when stored at -20°C.

RefSeq: [NM_001135190.1](#), [NP_001128662.1](#)

RefSeq Size: 4750 bp

RefSeq ORF: 3402 bp

Locus ID: 116985

UniProt ID: [Q96P48](#)

Cytogenetics: 11q13.4

Protein Pathways: Endocytosis

Gene Summary: The protein encoded by this gene contains SAM, ARF-GAP, RHO-GAP, ankyrin repeat, RAS-associating, and pleckstrin homology (PH) domains. In vitro, this protein displays RHO-GAP and phosphatidylinositol (3,4,5) trisphosphate (PIP3)-dependent ARF-GAP activity. The encoded protein associates with the Golgi, and the ARF-GAP activity mediates changes in the Golgi and the formation of filopodia. It is thought to regulate the cell-specific trafficking of a receptor protein involved in apoptosis. Multiple transcript variants encoding different isoforms have been found for this gene. [provided by RefSeq, Sep 2008]