

## Product datasheet for **RG226337**

### USP8 (NM\_001128611) Human Tagged ORF Clone

#### Product data:

Product Type:	Expression Plasmids
Product Name:	USP8 (NM_001128611) Human Tagged ORF Clone
Tag:	TurboGFP
Symbol:	USP8
Synonyms:	HumORF8; UBPY
Mammalian Cell Selection:	Neomycin
Vector:	pCMV6-AC-GFP (PS100010)
E. coli Selection:	Ampicillin (100 ug/mL)
ORF Nucleotide Sequence:	>RG226337 representing NM_001128611 Red=Cloning site Blue=ORF Green=Tags(s)

TTTTGTAATACGACTCACTATAGGGCGGCCGGAATTCGTCGACTGGATCCGGTACCGAGGAGATCTGCC  
GCC**CGATCGCC**

ATGCTGTGGCTTCAGTTCCTAAAGAACTCTACCTCAGTTCCTCACTAAAAGACCTTAATAAGAAGA  
CAGAAGTTAAACCAGAGAAAATAAGCACTAAGAGTTATGTGCACAGTGCCTGAAGATCTTTAAGACAGC  
AGAAGAATGCAGATTAGATCGTGATGAGGAAAGGGCCTATGTACTATATGAAATACGTGACTGTTTAT  
AATCTTATCAAAAAAGACCTGATTTCAAGCAACAGCAGGATTATTTCCATTCAACTTGGACCTGGAA  
ACATCAAAAAAGCTGTCGAAGAAGCTGAAAGACTCTCTGAAAGCCTTAAATTAAGATATGAAGAAGCTGA  
AGTCCGAAAAAACTTGAGGAAAAAGACAGGCAGGAGGAAGCACAGCGGCTACAACAAAAAGGCAGGAA  
ACAGGAAGAGAGGATGGTGGCACATTGGCTAAAGGCTCTTTGGAGAATGTTTTGGATTCCAAGACAAAA  
CCCAAAAGAGCAATGGTAAAAGAATGAAAAATGTGAGACCAAAGAGAAAGGAGCAATCACAGCAAAGGA  
ACTATACACAATGATGACGGATAAAAACATCAGCTTGATTATAATGGATGCTCGAAGAATGCAGGATTAT  
CAGGATTCCTGTATTTTACATTCCTCAGTGTTCCTGAAGAAGCCATCAGTCCAGGAGTCACTGCTAGTT  
GGATTGAAGCACACCTGCCAGATGATTCTAAAGACACATGGAAGAAGAGGGGGAATGTGGAGTATGTGGT  
ACTTCTTGACTGGTTTAGTTCTGCCAAAGATTTACAGATTGGAACAACCTCCGGAGTCTGAAAGATGCA  
CTTTTCAAGTGGAAAGTAAAAGTGTCTGCGCAATGAGCCTTTTGGTTTTAGAGGGAGGCTATGAAAAC  
GGCTCCTTTGTTATCCCCAGTATACAACAAATGCTAAGGTCACCTCCACCCACGACGCCAGAATGAAGA  
GGTGTCTATCTATTGGATTTTACTTATCCCTCATTGGAAGAATCAATTCCTTCTAAACCTGCTGCCAG  
ACGCCACCTGCATCTATAGAAGTAGATGAAAATATAGAATTGATAAGTGGTCAAAATGAGAGAATGGGAC  
CACTGAATATATCAACTCCAGTTGAACCAAGTGTCTGCTTCTAAATCTGATGTTTCAACCCATAATTCAGCC  
AGTGCCTAGTATAAAGAATGTTCCACAGATTGATCGTACTAAAAAACCAGCAGTCAAATTCCTGAAGAG  
CATAGAATAAAAATCTGAAAGTACAAACCATGAGCAACAATCTCCTCAGAGTGAAAAAGTTATTCCTGATC  
GTTCCACCAAGCCAGTAGTTTTTCTCCAACCTCATGTTAACAGATGAAGAAAAGGCTCGTATTTCATGC  
AGAAACTGCTCTTCTAATGGAAAAAACAAACAAGAAAAAGAACTTCGGGAAAGGCAGCAAGAGGAACAG



[View online »](#)

AAAGAGAACTGAGGAAGGAAGAACAAGAACAAAAAGCCAAAAAGAAACAAGAAGCTGAAGAAAATGAAA  
 TTACAGAGAAGCAACAAAAAGCAAAAAGAAGAAATGGAGAAGAAAGAAAGTGAACAGGCCAAGAAAGAAGA  
 TAAAGAAACCTCAGCAAAAGAGGGGCAAAGAAATAACAGGAGTAAAAAGACAAAGTAAAAGTGAACATGAA  
 ACTTCTGATGCCAAGAAATCTGTAGAAGATAGGGGGAAAAGGTGTCCAACCCAGAAATACAGAAAAAGT  
 CAACAGGAGATGTGCCCCATACATCTGTGACAGGGGATTCAGGTTACAGCAAGCCATTTAAGATTAAGG  
 ACAACCCAGAAAGTGAATTTAAGGACAGGAACTTTTAGAGAGGATACAGACGATACCCGAAAGAAATAAA  
 GCTCAACGAGAACCTTTGACAAGAGCACGAAGTGAAGAAATGGGGAGGATCGTACCAGACTGCCTCAG  
 GCTGGGCCAAGTTTCTTGACCCAATCACTGGAACCTTTGTTATTATCATTACCCACCAACTGTTCA  
 TATGTACCCACCGAAATGGCTCCTTCTGTGACCTCCTTCCACCCCTCCAACCTATAAAGCCAAGCCA  
 CAGATTCCTGCTGAGCGGGATAGGGAACCTTCCAACTGAAGCGCTCCTACTCCTCCCAGATATAACCC  
 AGGCTATTCAAGAGGAAGAGAAGAGGAAGCAACAGTAACTCCAACAGTTAATCGGGAAAACAAGCCAAC  
 ATGTTATCCTAAAGCTGAGATCTCAAGGCTTTCTGCTTCTCAGATTTCGGAACCTCAATCTGTTTTTGA  
 GGTTCGGACCAGCTCTTACTGGACTTCGTAACCTAGGAAATACTGTTATATGAACTCAATATTGCAGT  
 GCCTATGTAACGCTCCACATTTGGCTGATTATTTCAACCGAACTGTTATCAGGATGATATTAACAGGTC  
 AAATTTGTTGGGCATAAAGGTGAAGTGGCAGAAGAATTTGGTATAATCATGAAAGCCCTGTGGACAGGA  
 CAGTATAGATATATCAGTCCAAAGGACTTTAAAATCACCATTGGGAAGATCAATGACCAGTTTGCAGGAT  
 ACAGTCAGCAAGATTCACAAGAATTGCTTCTGTTCTTAATGGATGGTCTCCATGAAGATCTAAATAAAGC  
 TGATAATCGGAAGAGATATAAAGAAGAAAATAATGATCATCTCGATGACTTTAAAGCTGCAGAACATGCC  
 TGGCAGAAACACAAGCAGCTCAATGAGTCTATTATTGTTGCACTTTTTCAGGGTCAATTCAAATCTACAG  
 TACAGTGCCTCACATGTCACAAAAGTCTAGGACATTTGAGGCTTCATGATTTTGTCTCTACCACTAGC  
 ATCCACAAGTAAATGTACATTACAGGATTGCCTTAGATTATTTTCAAAGAAGAAAACTCACAGATAAC  
 AACAGATTTTACTGCAGTATTGCAGAGCTCGACGGGATTCCTAAAAAGATAGAAATTCGGAAGTTAC  
 CACCTGTGCTTTTGTGATCTGAAACGTTTTTCTACGATGGCAGGTGGAAACAAAAATACAGACATC  
 GTGGACTTCCCGTTAGAAAATCTTGACTTGTACAGTATGTTATTGGTCCAAAGAACAATTTGAAGAAA  
 TATAATTTGTTTTCTGTTTCAAATCACTACGGTGGCTGGATGGAGGCCACTACACAGCCTATTGAAAA  
 ATGCAGCAAGACAACGGTGGTTTAAAGTTTATGATCATGAAGTTTCTGATATCTCCGTTTCTTGTGAA  
 ATCTTCAGCAGCTTATATCCTCTTTTACTTTCATTGGGACCACGAGTAACTGATGTAGCCACA

ACGCGTACGCGGCCGCTCGAG – GFP Tag – GTTTAA

**Protein Sequence:**

>RG226337 representing NM\_001128611  
 Red=Cloning site Green=Tags(s)

MPAVASVPKELYLSSSLKDLNKKTEVKPEKISTKSYVHSALKIFKTAEECRDRDEERAYVLYMKYVTVY  
 NLIKKRPDFKQQQDYFHSILGPGNIKKAVEEAERLSESLKLYEEAEVRKLEEKDRQEEAQRLLQQRQE  
 TGREDGGTLAKGSLENVLDSKDKTQKSNGEKNEKCEKKEGAIKELYTMMDKNISLIIMDARRMQDY  
 QDSCILHSLVPEEAIISPGVTASWIEAHLPPDDSKDTWKKRGNVEYVLLDFWSSAKDLQIGTTLRSLKDA  
 LFKWESKTVLRNEPLVLEGGYENWLLCYPQYTTNAKVTPPPRRQNEEVSISLDFTYPSLEESIPSKPAAQ  
 TPPASIEVDENIELISGQNERMGPLNISTPVEPVAASKSDVSPIIQPVPVSIKNVPQIDRTKKPAVKLPEE  
 HRIKSESTNHEQQSPQSGKVIPDRSTKPVVFSPTLMLTDEEKARIIHAETALLMEKNKQEKELRERQEEQ  
 KEKLRKEEQEQKAKKKQEAENEITEKQKAKEEMEKKESEQAKKEDKETSAKRGEITGVKRQSKSEHE  
 TSDAKKSVEDRGKRCPTPEIQKKSTGDVPHTSVTGDGSGKPFKIKGQPESGILRTGTFREDTDDTERNK  
 AQRPLTRARSEEMGRIVPLPSGWAKFLDPIITGTFRYHHSPTNTVHMYPPEMAPSSAPPSTPPTHKAKP  
 QIPAERDREPSKLRYSYSPDITQAIQEEERKPTVPTVNRNKPCTCYPKAEISRLSASQIRNLNPVFG  
 GSGPALTGLRNLGNTCYMNSILQCLCNAPHLADYFNRCYQDDINRSNLLGHKGEVAEEFGIIMKALWTG  
 QYRISPKDFKITIGKINDQFAGYSQQDSQELLLFLMDGLHEDLNKADNRKRYKEENNDHLDFFKAAEHA  
 WQKHKLNESIIIVALFQGQFKSTVQCLTCHKKSRTFEAFMYLSLPLASTSKCTLQDCLRLFKEEKLTDN  
 NRFYCSHCRARRDSLKKIEIWKLPVLLVHLKRFSDYDGRWKQLQTSVDFPLENLDL SQYVIGPKNNLKK  
 YNLFVSNHYGGLDGGHYTAYCKNAARQRWFKFDDEHVSISVSSVKSSAAYILFYTSLGPRVTDVAT

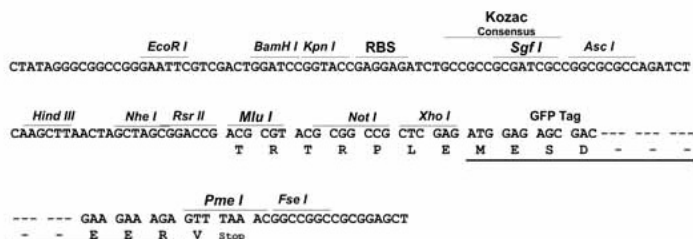
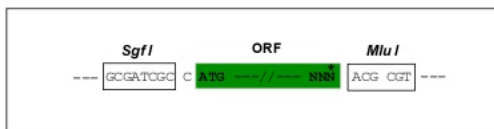
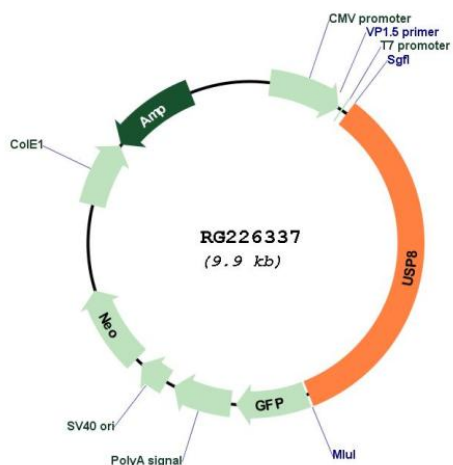
TRTRPLE – GFP Tag – V

**Restriction Sites:**

Sgfl-MluI

**Cloning Scheme:**

Cloning sites used for ORF Shutting:


**Plasmid Map:**

**ACCN:**

NM\_001128611

**ORF Size:**

3354 bp

**OTI Disclaimer:**

The molecular sequence of this clone aligns with the gene accession number as a point of reference only. However, individual transcript sequences of the same gene can differ through naturally occurring variations (e.g. polymorphisms), each with its own valid existence. This clone is substantially in agreement with the reference, but a complete review of all prevailing variants is recommended prior to use. [More info](#)

**OTI Annotation:**

This clone was engineered to express the complete ORF with an expression tag. Expression varies depending on the nature of the gene.

<b>Components:</b>	The ORF clone is ion-exchange column purified and shipped in a 2D barcoded Matrix tube containing 10ug of transfection-ready, dried plasmid DNA (reconstitute with 100 ul of water).
<b>Reconstitution Method:</b>	<ol style="list-style-type: none"><li>1. Centrifuge at 5,000xg for 5min.</li><li>2. Carefully open the tube and add 100ul of sterile water to dissolve the DNA.</li><li>3. Close the tube and incubate for 10 minutes at room temperature.</li><li>4. Briefly vortex the tube and then do a quick spin (less than 5000xg) to concentrate the liquid at the bottom.</li><li>5. Store the suspended plasmid at -20°C. The DNA is stable for at least one year from date of shipping when stored at -20°C.</li></ol>
<b>RefSeq:</b>	<u>NM_001128611.1, NP_001122083.1</u>
<b>RefSeq Size:</b>	5866 bp
<b>RefSeq ORF:</b>	3356 bp
<b>Locus ID:</b>	9101
<b>Cytogenetics:</b>	15q21.2
<b>Protein Families:</b>	Druggable Genome, Protease
<b>Protein Pathways:</b>	Endocytosis
<b>Gene Summary:</b>	This gene encodes a protein that belongs to the ubiquitin-specific processing protease family of proteins. The encoded protein is thought to regulate the morphology of the endosome by ubiquitination of proteins on this organelle and is involved in cargo sorting and membrane trafficking at the early endosome stage. This protein is required for the cell to enter the S phase of the cell cycle and also functions as a positive regulator in the Hedgehog signaling pathway in development. Pseudogenes of this gene are present on chromosomes 2 and 6. Alternate splicing results in multiple transcript variants. [provided by RefSeq, Sep 2013]