

Product datasheet for **RG226330**

Synaptopodin 2 (SYNPO2) (NM_001128934) Human Tagged ORF Clone

Product data:

Product Type: Expression Plasmids
Product Name: Synaptopodin 2 (SYNPO2) (NM_001128934) Human Tagged ORF Clone
Tag: TurboGFP
Symbol: SYNPO2
Mammalian Cell Selection: Neomycin
Vector: pCMV6-AC-GFP (PS100010)
E. coli Selection: Ampicillin (100 ug/mL)
ORF Nucleotide Sequence: >RG226330 representing NM_001128934
Red=Cloning site Blue=ORF Green=Tags(s)

TTTTGTAATACGACTCACTATAGGGCGGCCGGGAATTCGTCGACTGGATCCGGTACCGAGGAGATCTGCC
GCCCGATCGCC

ATGGGCACAGGGGATTTATCTGCATTTCCATGACTGGAGGGGCGCCCTGGGGTTTCAGATTGCAAGGTG
 GCAAGGAGCAGAAGCAGCCCTTACAAGTTGCAAAGATTCGAAATCAGAGCAAAGCCTCTGGGCTGGGCT
 CTGTGAGGGAGATGAAGTGGTTTCCATCAATGGCAACCCTGTGCAGATCTCACCTACCTGAAGTCATC
 AAGCTCATGGAAGCATAACAGACTCTCTCAAATGCTCATCAAAGACCATCCAGTGGAAAGTGAGG
 CTTTGATATCTGAAATGAAAACAAAACCTCGAGCATCTCACACATGGGGGTTATGTGGAAGTACCAC
 CCTGCAGATTCGACCGGCCACAAAGACCAGTGCACAGAATTCTCCTCGCCCCTGCAAGACTGAAGTT
 CCCCTAGCTGAGAACAAAGAAGTGGTCCCGACTGTGCAGGCAGCTTGAAGAAGAACAAGGCCCGAGCT
 ACCAAAGGGCTCCCAAATGCCTGACTCCCAAAGAGGACGCGTGGCAGAAGAGCTGATCTTAAGGGAGAA
 GGTAGAAGCGGTACAGCCTGGGCTGTGGTTGAGCTGCAACTGTCCCTTTCACAGGAGAGACATAAGGGC
 GCTAGTGGCCCTTAGTGGCTCTCCGGGAGCTGAAAAATCTAAGTCTCCTGACCCAGACCCTAACTTGT
 CACATGACAGGATTGTCCACATAAATTCGATCCCTACTAATGAGAAAGCAGACCCTTCTGAGGTCCAG
 CAAGATAATCCAGATCTCCAGTGGCAGAGATTGAGAGTATCCAGGAAAGTGAAGCAGGAGATGCGGGA
 CTGCCCGGGTGAAGTATCCTCGACTGCTCTGACAGGCAGAAGACAGAAGGGTGCAGGCTTCAGGCAG
 GAAAGGAGTGTGTGGATTCTCCAGTGGAAAGGAGGGCAGTCAGAAGCACCTCTTCTGTGATCCTTTGC
 CGTCTCATCAGAAGGCACAGAGCAGGGAGAAGATCCACGCTCGGAAAAAGATCACAGCAGACCTCACAAG
 CACCGAGCGCGCATGCACGGCTCAGGAGGAGTAAAAGCCTGTCAGAAAAACAAGTGAAGGAAGCAAAAT
 CTAATGCAAAAGCATTGCCCTTCTTCTAACGGATGCTCCCAACCCCAACTCCAAGGGGGTGTGATGTT
 TAAGAAGCGAGCTCGGAGGGCCAGGAAATACACCCTAGTTAGCTACGGTACTGGCGAGCTTGAGCGAGAG
 GCGGACGAGGAGGAAGAAGGTGACAAGGAGGATACATGTGAAGTAGCATTCTTGGTGCAAGCGAATCAG
 AGGTGGATGAAGATTATTGTCTGACGTTGACGACAACACACAAGTTGTGAACTTACTGGGATTCTGG
 ACTGGTGACATTGAAAAGAACTGAACAGAGGGGACAAGATGGAGATGTTACCAGACCCACAGGCAAG
 GGAGCCCTCATGTTTGCCAAAGAGGAGGGAGAGAATGGATCAGATCACAGCCAAAAAGAAGAGGCAAGG
 TAGGTGGAACGCCAAGCAGAGAACAAGATGCTGCCAGACCGATGGCCTGAGAACCACGACTTCTTACCA



[View online »](#)

```
AAGAAAGGAGGAAGAGTCGGTAAGAACGCAGAGCTCTGTGAGCAAAAGCTACATCGAGGTGAGTCATGGT
CTTGGCCATGTTCCCAACAGAATGGCTTCAGTGGGACATCTGAGACAGCAAACATCCAGAGGATGGTCC
CCATGAATAGAACGGCCAAACCCCTCCAGGGTCTGTGAATCAGCCAGCTACCCCTTCTCGCAACCCG
AAACATGACGAGTCCCATTGCTGACTTCTGCACCTCCACCTTACTCTGCAGTCACTCTCCCTGAC
GCCTTCTCAGAGGGGTTTCAAGTCCGATTGCTGGCCAGCACAGCCCTCCATGGCCCAAGCCTGCCC
CGTGGTCCCAGCCAGCCTTTTACGATTCGTCTGAGCGAATAGCTTCCCGAGATGAGAGGATCTCAGTGCC
AGCAAAAAGAACAGGAATATTGCAGGAGCCAAAAGGAGAGCAGCAGCAAAAACCCATGTTACTTTTAAA
GAGCCCAAAGTAAGCCCAAATCCTGAACCTTGTCACTCCTTCAAAATTCAGAAGCAAAAGGGGCACTG
GAGCTGGAGGTGATTCCGGACCGGAAGAAGACTACCTCAGCTTGGGGGCAGAGGCTTGAATTTTCATGCA
AAGCTCCTCTGCCAAAACAAAAGACCCCTCCTCCTGTTGCTCAAAACCTGCAGTCAAGTCTCATCTCC
CAACCAGTAACTCCAGTTTCCCACTGCTGGTCTCCAGGAGTGGCTCCACCCAACCTCCTGCCTTCCCA
CATCCAACCCATCAAAGGGCACCCTTGTCTCCTCCATCAAATAGCCAGCCTTCTTACCCTCCTGCCC
GCCTGCAAGTACTTTGACGTGGCTGGTCCCTCAAAGGACCACAAGCAGCAGTACCCAGTCAAGTATAC
ACACCCAAACCAACAGTTTCCACACCAACAGTCAATGCTGTTGAGCCTGGTGCAGTGGGACCATCCAATG
AGCTTCCAGGAATGAGTGGGAGAGGAGCTCAGCTCTTGTAAAAGGCAGTGCAGAAATGGAGAAGTATGT
GGTCGATTTCAGACACGGTGCAGGCCACGCTGCTCGAGCTCAGTCTCCACTCCATCTCTCCCGGCCAGT
TGGAAGTACTCCTCCAATGTCCGAGCACCTCCTCCTGTGGCCTATAATCCTATCCACTCGCCGCTTACC
CACTGGCTGCTCTCAAGTCTCAGCCATCAGCTGCACAGCCCTCCAAAATGGGCAAGAAAAGGAAAGAA
ACCCCTCAATGCATTAGATGTCATGAAGCACCAACCGTATCAGCTCAATGCATCCTTGTACTTTCCAA
CCTCCAGATGCAAAGGATGGCCTCCCCAGAAGTATCAGTCAAGGTCAATTCAGCCCTGGCCATGAAGC
AAGCTCTTCTCCCGGCCAGTGAATGCTGCCTCACCTACGAATGTGCAGGCTTCGTGAGTACTCGGT
ACCAGCCTATACCTCCTCCTTCTTTCAGAGGCCCTCCTCACCAGTCAAGTCAATCCCAAGTGCCT
GTGGGCATTCACCTCGCCAAAAGCAAGAATCAGCCTCATCTTATTTTGTGGCAACCAAGGCCAAAGT
TCTCAGCCAAAGAAAGTGGTGTCACAATTCAGGTGAAATGTAAATCTGGGATCCATAGTCAAGATATCAT
AAGGACCTACTTCCAGCCTACCTTTCTCCTCTACC
```

ACGCGGCCGCTCGAG - GFP Tag - GTTTAA

Protein Sequence:

>RG226330 representing NM_001128934
 Red=Cloning site Green=Tags(s)

```
MGTGDFICISMTGGAPWGFRLQGGKEQKQPLQVAKIRNQSKASGSGLCEGDEVVISINGNPCADLTYPEVI
KLMESITDSLQMLIKRPSSGISEALISENENKNLEHLTHGGYVESTTLQIRPATKTQCTEFFLAPVKTEV
PLAENQRSGPDCAGSLKEETGPSYQRAPQMPDSQRGRVAEELILREKVEAVQPGPVVELQLSLSQERHKG
ASGPLVALPGAESKSPDPDPNL SHDRIVHINSIPTNEKADPFLRSSKIIQISSGRELRVIQESEAGDAG
LPRVEVILDCSDRQKTEGCRLOAGKECVDSPVEGGQSEAPPSLVSFVSSSEGTEQGEDPRSEKDHRSRPHK
HRARHARLRRSESLSEKQVKEAKSKCKSIALLLTDAPNPNSKGVLMFKKRRRRRARKYTLVSYGTGELERE
ADEEEEGDKEDTCEVAFLGASESEVDEELLSDVDDNTQVVNFWDWDSGLVDIEKLNREGDKMEMLPDITGK
GALMFAKRRERMDQITAQKEEDKVGGTPSREQDAAQTDGLRRTTTSYQRKEEESVTRQSSVSKSYIEVSHG
LGHVPQQNGFSGTSETANIQRMPVPMNRTAKPFPVSVNQPATPFSPTRNMTSPIADFPAPPYSAVTPPPD
AFSRGVSSPIAGPAQPPWPQPAPWSQPAFYDSSERIASRDERISVPAKRTGILQEAKRRSTTKPMFTFK
EPKVSPNPELLSLLQNSEGKRGTGAGGDSGPEEDYLSLGAECNFMQSSSAKQKTPPPVAPKPAVKSSSS
QPVTVPVSPVWSPGVAPTQPPAFPTSNNPSKGTVVSSIKIAQPSYPPARPASTLNVAGPFKGPQAQAVASQNY
TPKPTVSTPTVNAVQPGAVGPNELPGMSGRGAQLFAKRQSRMEKYVVDSDTVQAHARAASQPTPSLPAS
WKYSSNVRAPPVAYNPVHSPSYPLAALKSQPSAAQPSKMGKKKGGKPLNALDVMKHQPYQLNASLFTFQ
PPDAKDLPLQKSSYKVNALAMKQALPPRPVNAASPTNVQASSVYVPAVYTSPPSFFAEASSPVSASPVP
VGIPSPKQESASSSYFVAPRPKFSAKKSGVTIQVKCKSGIHSQDIIRTYFPAYLSSST
```

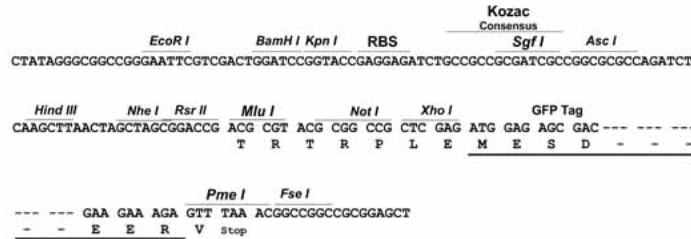
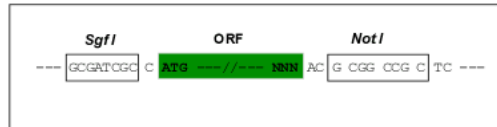
TRPLE - GFP Tag - V

Restriction Sites:

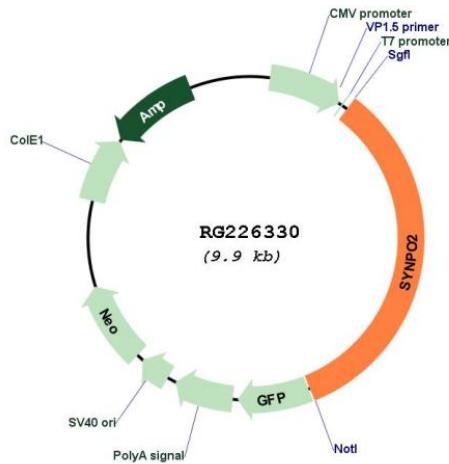
Sgfl-NotI

Cloning Scheme:

Cloning sites used for ORF Shuttling:



Plasmid Map:



ACCN: NM_001128934

ORF Size: 3327 bp

OTI Disclaimer: The molecular sequence of this clone aligns with the gene accession number as a point of reference only. However, individual transcript sequences of the same gene can differ through naturally occurring variations (e.g. polymorphisms), each with its own valid existence. This clone is substantially in agreement with the reference, but a complete review of all prevailing variants is recommended prior to use. [More info](#)

OTI Annotation: This clone was engineered to express the complete ORF with an expression tag. Expression varies depending on the nature of the gene.

Components:	The ORF clone is ion-exchange column purified and shipped in a 2D barcoded Matrix tube containing 10ug of transfection-ready, dried plasmid DNA (reconstitute with 100 ul of water).
Reconstitution Method:	<ol style="list-style-type: none">1. Centrifuge at 5,000xg for 5min.2. Carefully open the tube and add 100ul of sterile water to dissolve the DNA.3. Close the tube and incubate for 10 minutes at room temperature.4. Briefly vortex the tube and then do a quick spin (less than 5000xg) to concentrate the liquid at the bottom.5. Store the suspended plasmid at -20°C. The DNA is stable for at least one year from date of shipping when stored at -20°C.
RefSeq:	NM_001128934.3
RefSeq Size:	4866 bp
RefSeq ORF:	3330 bp
Locus ID:	171024
UniProt ID:	Q9UMS6
Cytogenetics:	4q26
Gene Summary:	Has an actin-binding and actin-bundling activity. Can induce the formation of F-actin networks in an isoform-specific manner (PubMed:24005909, PubMed:23225103). At the sarcomeric Z lines is proposed to act as adapter protein that links nascent myofibers to the sarcolemma via ZYX and may play a role in early assembly and stabilization of the Z lines. Involved in autophagosome formation. May play a role in chaperone-assisted selective autophagy (CASA) involved in Z lines maintenance in striated muscle under mechanical tension; may link the client-processing CASA chaperone machinery to a membrane-tethering and fusion complex providing autophagosome membranes (By similarity). Involved in regulation of cell migration (PubMed:22915763, PubMed:25883213). May be a tumor suppressor (PubMed:16885336). [UniProtKB/Swiss-Prot Function]