

Product datasheet for **RG226308**

SMARCA1 (NM_139035) Human Tagged ORF Clone

Product data:

Product Type:	Expression Plasmids
Product Name:	SMARCA1 (NM_139035) Human Tagged ORF Clone
Tag:	TurboGFP
Symbol:	SMARCA1
Synonyms:	ISWI; NURF140; SNF2L; SNF2L1; SNF2LB; SNF2LT; SWI; SWI2
Mammalian Cell Selection:	Neomycin
Vector:	pCMV6-AC-GFP (PS100010)
E. coli Selection:	Ampicillin (100 ug/mL)
ORF Nucleotide Sequence:	>RG226308 representing NM_139035 Red=Cloning site Blue=ORF Green=Tags(s)

TTTTGTAATACGACTCACTATAGGGCGGCCGGAATTCGTCGACTGGATCCGGTACCGAGGAGATCTGCC
GCC**CGATCGCC**

ATGGAGCAGGACACTGCCGAGTGGCAGCCACCGTGGCAGCCGCGGATGCGACCGCCACTATCGTGGTCA
TAGAGGACGAGCAGCCCGGGCCGTCCACCTCTCAGGAGGAGGGAGCGCCCGCGGCCACCGAAGCCAC
CGCGGCCCGGAGAAGGGCGAGAAGAAGGAGAAAAACGTTTCTTCACTCAACTCAACTTGTCTGCT
AAAGCGCCTAAATCTGAAAAGGAAATGGACCCAGAATATGAAGAGAAAAATGAAAGCCGACCGAGCAAGA
GATTTGAATTTTACTGAAGCAGACAGAATTTTGCACATTTTCATTAGCCTTCAGCACAGAAATCTCC
AACATCTCCACTGAACATGAAATTTGGGACGTCCCGAATAAAGAAAGATGAAAGCAGAGCTTAATTTCT
GCTGGAGACTACCGCCATAGGCGCACAGAGCAAGAAGAAGATGAAGAGCTACTGTCTGAGAGTCGAAAA
CATCTAATGTGTGATTAGATTTGAGGTGTACCTTCATATGTGAAAGGGGGGCCACTGAGAGATTATCA
GATTCGAGGACTGAATTGGTTGATCTCTTTATATGAAAATGGAGTCAATGGCATTGTTGGCTGATGAAATG
GGCCTTGGGAAAACCTTACAAACAATTGCTTTGCTTGGTTACCTGAAACTACCGAAATATTCTGGAC
CTCACATGGTTTTAGTTCCAAAGTCTACTTTACACAACGGATGAATGAATTTAAACGATGGGTCCCATC
TCTCCGTGTCATTTGTTTTGTCGGAGACAAGGATGCCAGAGCTGCTTTTATTCGTGATGAAATGATGCCA
GGAGAGTGGGATGTTTGCCTTACTTCTTATGAGATGGTAATTAAGAAAAATCTGTATTTCAAAAAGTTTC
ACTGGCGATACCTGGTCATTGATGAAGCTCACAGAATAAAGAATGAAAAATCTAAGCTTTACAGAGATTGT
TCGTGAGTTCAAGTCGACTAACCCTTGTCTTAACTGGAACACCTTTGCAGAATAACCTGCATGAACTG
TGGCCTTACTCAACTTTTTATTGCCTGATGTCTTTAATTCTGCAGATGACTTTGATTCTTGGTTTGACA
CTAAAAATTGCTTGGTATCAAAAACCTCGTGGAAAGACTTCATGCAGTTTTAAACCATTTTTGTTACG
CCGTATAAAAACCTGATGTAGAGAAGAGTCTGCCACCTAAAAAGGAAATAAAGATTTACTTGGGGCTGAGT
AAGATGCAACGAGAATGGTATACAAAACTCTGATGAAAGATATTGATGTTTTAACTCTTCTGGCAAGA
TGGACAAGATGCGACTCTTAAACATTCTGATGCAGCTTCGAAAGTGTGTAATCATCCATATCTGTTTGA
TGGTGCTGAACCTGGTCCACCTTATACCACTGATGAGCATATTGTCAGCAACAGTGGTAAAAATGGTAGTT



[View online »](#)

```

CTGGATAAACTATTGGCCAAACTCAAAGAACAGGGTTCAAGGGTTCATTTTCAGCCAGATGACTCGCT
TGCTGGATATTTTGAAGATTATTGCATGTGGCGTGGTTATGAGTATTGTCGACTGGATGGCAAACCC
GCATGAAGAAAGAGAGGAAGCAATAGAGGCTTTTAAATGCTCCTAATAGTAGCAAATTCATCTTTATGCTA
AGTACCAGGGCTGGAGGTCTCGGAATTAACCTGGCAAGTCTGATGTGGTTATACTATATGATTCAGACT
GGAACCCACAGGTTGATCTACAAGCTATGGATCGAGCACATCGTATTGGTGAAGAAACAGTACGTGT
ATTCGCTCATCACTGACAACACTGTTGAAGAGAGGATTGTAGAAGAGCTGAGATAAACTGAGACTC
GATTCATTGTTATACAACAAGGAAGACTCATTGACCAACAGTCTAACAGCTGGCAAAGAGGAAATGT
TACAAATGATACGGCATGGAGCCACCCATGTTTTGCTTCTAAAGAGAGTGAGTTGACAGATGAAGACAT
TACAACACTATTCTGAAAAGAGGGGAAAAAGAAGACTGCAGAGATGAATGAACGCCTGCAAAAAATGGGAGAG
TCTTCTCTAAGAAATTTAGAATGGACATTGAACAAAGTTTATACAAATTTGAGGGAGAAGATTATAGAG
AAAAACAGAAGCTTGGCATGGTGAATGGATTGAACCTCCTAACGAGAACGCAAAGCAAACACTACGCAGT
GGATGCCTACTTTAGAGAGGCTTTGCGTGTGAGCGAGCCAAAGATTCCAAAGGCTCCACGGCTCCAAAA
CAGCCAAATGTTCAAGATTTTCAATTTTCCCACCAGCTATTTGAGCTCCTGGAAAAGGAAATTTCTTT
ATTATCGGAAGACAATAGGCTATAAGGTTCCAAGGAATCTGATATCCCAATCCAGCTCTGGCTCAAAG
AGAAGAGCAAAAAAGATTGATGGAGCTGAACCTTTACACCAGAAGAGACTGAAGAAAAGGAAAAACTT
CTCACACAAGGTTTCACAACTGGACTAAACGAGATTTTAAACAGTTTATTAAGCTAATGAGAAATATG
GAAGAGATGACATTGATAACATAGCTCGAGAGGTAGAGGGCAAATCCCCTGAGGAGGTATGGAGTATTC
AGCTGTATTTTGGGAACGTTGCAATGAATTACAGGACATTGAGAAAATTTAGGCTCAAATTTGAACGTGGA
GAAGCAAGAATTCACGAAGGATCAGTATCAAGAAAGCCCTGGATGCCAAAATTTGCAAGTACAAGGCTC
CATTTTCATCAGTTGCGCATTGATGGAACAGCAAAGGAAAGAACTATACTGAGGAAGAAGATAGATT
CTTGATTTGTATGTTACACAAAATGGGCTTTGATAGAGAAAATGTATGAAGAATTAAGACAGTGTGTA
CGAAATGCTCCCAAGTTTAGATTTGACTGGTTTATCAAGTCTAGGACTGCCATGGAATCCAGAGACGCT
GTAACACTCTGATTTTATTGATTGAGAAAAGAAAATATGAAAATGAGAAAAGAGAGAGAGCAGAAAAGAA
GAAACGGGCAACTAAAACCTCAATGGTAAAATTTTCAGCATTTTCC
    
```

ACGCGTACGCGGCCGCTCGAG - GFP Tag - GTTTAA

Protein Sequence:

>RG226308 representing NM_139035
 Red=Cloning site Green=Tags(s)

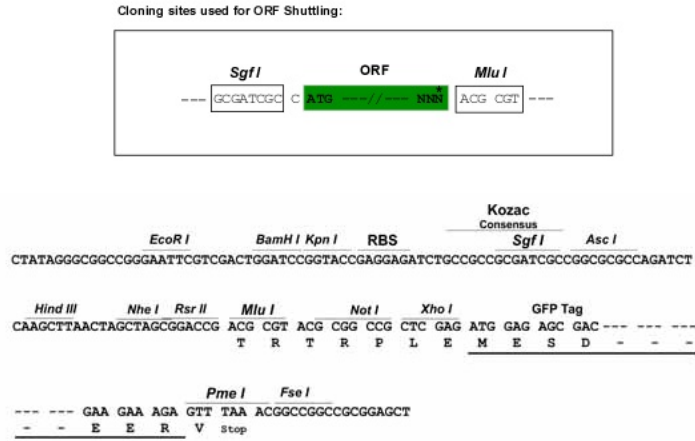
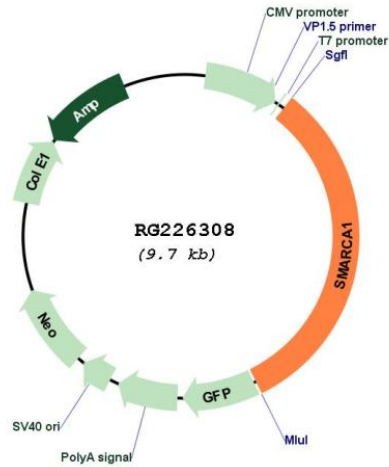
```

MEQDTAAVAATVAADATATIVVIEDEQPGPSTSQEEGAAAAATEATAATEKGEKKKEKNVSSFQLKLA
KAPKSEKEMDPEYEEKMKADRAKRFELLLKQTELFQHFQPSAQKSPSPLNMKLRPRIKKDEKQSLIS
AGDYRHRRTQEEDDELLSESRKTSNVCIRFEVSPSYVKGGLRQYQIRGLNWLISLYENGVNGLADEM
GLGKTLQTIALLGYLKHYRNIPGPHMVLVPKSTLHNWNEFKRWVPSLRVICFVGDKDARAAFIRDEMMP
GEWDVVCVTSYEMVIKEKSVFKFHWRYLVIDEAHRKNEKSKLSEIVREFKSTNRLLLTGTPLNHLHEL
WALLNLLPDVFNASDDFDSWFDTKNCLGDQKVERLHVLKPFLLRRIKTDVEKSLPPKKEIKIYLGSL
KMQRWYTKILMKDIDVLNSSGKMDKMRLLNMLQLRKCCHPYLFDGAEPGPYTTDEHIVSNSGKMVV
LDKLLAKLKEQGSRLVIFSQMTRLLDILEDYCMWRGYEYCRLDGQTPHEEREEAIEAFNAPNSSKFI
STRAGGLGINLASADVILYDSWNPQVDLQAMDRAHRIGQKPVRFRLITDNTVEERIVERAEIKLRL
DSIVIQQGRLIDQQSNLKAEMEQLMIRHGATHVFASKESELTDIEDITTLERGEKKTAEEMNERLQKMG
SSLRNFRMDIEQSLYKFEGEDYREKQKLGMEVIEPPKRRERKANYAVDAYFREARVSEPKIPKAPRPPK
QPNVQDFQFFPPRLFELLEKEILYYRKTIGYKVPKPNPDIQPNPALAQREEQKIDGAEPLTPEETEEKE
LTQFTNWTKRDFNQFIKANEKYGRDDIDNIAREVEGKSPEEVMESAVFWERCNELQDIEKIMAQIERG
EARIQRRISIKKALDAKIARYKAPFHQLRIQYGTSGKKNYTEEDRFLICMLHKMGFDRENVYELRQCV
RNAPQFRFDWFIKSRTAMEFQRRCNTLISLIEKENMEIEERERAEKKKRAKTKPMVKFSAFS
    
```

TRTRPLE - GFP Tag - V

Restriction Sites:

Sgfl-Mlul

Cloning Scheme:

Plasmid Map:


ACCN: NM_139035

ORF Size: 3126 bp

OTI Disclaimer: The molecular sequence of this clone aligns with the gene accession number as a point of reference only. However, individual transcript sequences of the same gene can differ through naturally occurring variations (e.g. polymorphisms), each with its own valid existence. This clone is substantially in agreement with the reference, but a complete review of all prevailing variants is recommended prior to use. [More info](#)

OTI Annotation:	This clone was engineered to express the complete ORF with an expression tag. Expression varies depending on the nature of the gene.
Components:	The ORF clone is ion-exchange column purified and shipped in a 2D barcoded Matrix tube containing 10ug of transfection-ready, dried plasmid DNA (reconstitute with 100 ul of water).
Reconstitution Method:	<ol style="list-style-type: none">1. Centrifuge at 5,000xg for 5min.2. Carefully open the tube and add 100ul of sterile water to dissolve the DNA.3. Close the tube and incubate for 10 minutes at room temperature.4. Briefly vortex the tube and then do a quick spin (less than 5000xg) to concentrate the liquid at the bottom.5. Store the suspended plasmid at -20°C. The DNA is stable for at least one year from date of shipping when stored at -20°C.
RefSeq:	NM_139035.2 , NP_620604.2
RefSeq Size:	4066 bp
RefSeq ORF:	3128 bp
Locus ID:	6594
Cytogenetics:	Xq25-q26.1
Domains:	SNF2_N, myb_DNA-binding, DEAD, helicase_C
Protein Families:	Transcription Factors
Gene Summary:	This gene encodes a member of the SWI/SNF family of proteins. The encoded protein is an ATPase which is expressed in diverse tissues and contributes to the chromatin remodeling complex that is involved in transcription. The protein may also play a role in DNA damage, growth inhibition and apoptosis of cancer cells. Alternative splicing results in multiple transcript variants. [provided by RefSeq, Sep 2013]