

Product datasheet for **RG226306**

NLRP7 (NM_001127255) Human Tagged ORF Clone

Product data:

Product Type: Expression Plasmids
Product Name: NLRP7 (NM_001127255) Human Tagged ORF Clone
Tag: TurboGFP
Symbol: NLRP7
Synonyms: CLR19.4; HYDM; NALP7; NOD12; PAN7; PYPAF3
Mammalian Cell Selection: Neomycin
Vector: pCMV6-AC-GFP (PS100010)
E. coli Selection: Ampicillin (100 ug/mL)
ORF Nucleotide Sequence: >RG226306 representing NM_001127255
 Red=Cloning site Blue=ORF Green=Tags(s)

TTTTGTAATACGACTCACTATAGGGCGGCCGGAATTCGTCGACTGGATCCGGTACCGAGGAGATCTGCC
 GCC**CGATCGCC**

ATGACATCGCCCCAGCTAGAGTGGACTCTGCAGACCCCTTCTGGAGCAGCTGAACGAGGATGAATTAAGA
 GTTTCAAATCCCTTTTATGGGCTTTTCCCTCGAAGACGTGCTACAGAAGACCCCATGGTCTGAGGTGGA
 AGAGGCTGATGGCAAGAACTGGCAGAAATTCGGTCAACACCTCCTCAGAAAATTGGATAAGGAATGCC
 ACTGTGAACATCTTGAAGAGATGAATCTCACGGAATTGTGAAGATGGCAAAGGCTGAGATGATGGAGG
 ACGGACAGGTGCAAGAAATAGATAATCCTGAGCTGGGAGATGCAGAAGAAGACTCGGAGTTAGCAAAGCC
 AGGTGAAAAGGAAGGATGGAGAAATCAATGGAGAAACAGTCTTTGGTCTGGAAGAACACCTTTTGGCAA
 GGAGACATTGACAATTTCCATGACGACGCTCACTCTGAGAAACCAACGGTTCATTCCATTCTGAATCCCA
 GAACACCCAGGAAGCTAACACCTTACACGGTGGTCTGCACGGCCCCGAGGCGTGGGAAAACACGCT
 GGCCAAAAAGTGTATGCTGGACTGGACAGACTGCAACCTCAGCCCAGCGCTCAGATACGCGTTTACCTC
 AGCTGCAAGGAGCTCAGCCGCATGGGCCCTGCAGTTTTCAGAGCTGATCTCAAAGACTGGCCTGAAT
 TGCAGGATGACATTCCAAGCATCCTAGCCCAAGCACAGAGAATCCTGTTCTGGTTCGATGGCCTTGATGA
 GCTGAAAGTCCCACCTGGGGCGCTGATCCAGGACATCTGCGGGGACTGGGAGAAGAAGAAGCCGGTGCCC
 GTCCTCCTGGGGAGTTTGTGAAGAGGAAGATGTTACCCAGGGCAGCCTTGTGGTCAACACGGGCCCA
 GGGCACTGAGGGACCTCCAGCTCCTGGCGCAGCAGCCGATCTACGTAAGGGTGGAGGGCTTCTGGAGGA
 GGACAGGAGGGCCTATTTCTGAGACACTTTGGAGACGAGGACCAAGCCATGCGTGCCTTTGAGCTAATG
 AGGAGCAACGCGGCCCTGTTCCAGCTGGGCTCGGCCCCGCGGTGTGCTGGATTGTGTCACGACTCTGA
 AGCTGCAGATGGAGAAGGGGAGGACCCGGTCCCCACCTGCCTCACCCGCACGGGGCTGTTCTGCGTTT
 CCTCTGCACGGGTTCCCGCAGGGCGCACAGCTGCGGGGCGCGCTGCGGACGCTGAGCCTCTGGCCGCG
 CAGGGCCTGTGGGCGCAGATGTCCTGTTCACCCGAGAGGACCTGGAAAGGCTCGGGGTGCAGGAGTCCG
 ACCTCCGTCTGTTCTGGACGGAGACATCTCCGCCAGGACAGAGTCTCAAAGGCTGCTACTCCTTCAT
 CCACCTCAGTTCACGAGTTTCTCACTGCCCTGTTCTACGCCCTGGAGAAGGAGGAGGGGAGGACAGG



[View online >](#)

GACGGCCACGCTGGGACATCGGGACGTACAGAAGCTGCTTCCGGAGAAGAAAGACTCAAGAACCCCG
 ACCTGATTCAAGTAGGACTTCTTATTCGGCCTCGCTAACGAGAAGAGAGCCAAAGGAGTTGGAGCCAC
 TTTTGGCTGCCGATGTACCCGGACATCAAACAGGAATTGCTGCAATGCAAAGCACATCTTCATGCAAA
 AAGCCCTATCCGTGACCACCTGAAGGAGGTCTTGGGCTGCCTGTATGAGTCTCAGGAGGAGGAGCTGG
 CGAAGTGGTGGTGGCCCCGTTCAAGGAAATTTCTATTCACCTGACAAATACTTCTGAAGTATGCATTG
 TTCCTTCAGCCTGAAGCATTGTCAAGACTTGCAGAAACTCTACTGCAGGTAGCAAAGGGGGTGTTCCTG
 GAGAATTACATGGATTTTGAAGTGGACATTGAATTTGAAAGGTGCACTTACCTAACCATCCGAAGTGGG
 CTGGCAGGATCTCGCTCTCTCGCCTCTGGACAGATTTCTGCTCTCTTTCAGCTCAAACAGCAACCT
 CAAGTTTCTGGAAGTGAACAAAGCTTCTCTGAGTACTTCTGTGCGGATTCTTGTGACCACGTAACC
 CGTAGCACCTGTCTGCAGAAAGTGGAGATTAACGACCTCACCCCTGACACCGCGTACCGGGACTTCT
 GTCTTGTCTTTCATTGGGAAGAAGACCTCACGCACCTGACCCCTGGCAGGGCACATCGAGTGGGAACGCAC
 GATGATGCTGATGCTGTGTGACCTGCTCAGAAATCATAAATGCAACCTGCAGTACCTGAGGTTGGGAGT
 CACTGTGCCACCCCGGAGCAGTGGGCTGAATCTTCTATGCTCTCAAAGCCAACCACTGAGGACCTGAGC
 TGCCTCTCAGCCAATGTGCTCCTGGATGAGGGTCCATGTTGCTGTACAAGACCATGACACGCCCAA
 AACTTCTCAGATGTTGCTGTTGAAAACCTGCTGCTTACAGAAGCCAGTTGCAAGGACCTTGTGCT
 GTCTTGGTTGTCAGCAAGAAGCTGACACACCTGTGCTTGGCCAAGAACCCTATTGGGGATACAGGGGTGA
 AGTTTCTGTGTGAGGGCTTGAGTTACCTGATTGTAACCTGCAGACCTTGGTGTACAGCAATGCAGCAT
 AACCAAGCTTGGCTGTAGATATCTCTCAGAGGCGCTCAAAGAAGCCTGCAGCCTCACAAACCTGGACTTG
 AGTATCAACCAGATAGCTCGTGGATTGTGGATTCTCTGTGAGGCATTAGAGAATCCAAACTGTAACCTAA
 AACACCTACGCCCTCTGGAGCTGCTCCCTCATGCCTTCTATTGTGAGCATCTTGGATCTGCTCTCCTCAG
 CAATCAGAAGCTTGAACCTCTGGACCTGGGCCAGAATCATTGTGGAAGAGTGGCATAATTAAGCTCTT
 GGGGTTTAAAGACAAAGAACTGGATCCTTGAAGATACTCAGGTTGAAGACCTATGAAACTAATTTGAAA
 TCAAGAAGCTGTTGGAGGAAGTGAAGAAAAGAATCCCAAGCTGACTATTGATTGCAATGCTTCCGGGGC
 AACGGCACCTCCGTGCTGTGACTTTTTTTCG

AGCGGACCGACGCGTACGCGGCCGCTCGAG - GFP Tag - GTTTAA

Protein Sequence:

>RG226306 representing NM_001127255
 Red=Cloning site Green=Tags(s)

MTSPQLEWTLQTLLEQLNEDELKSFKSLWAFPLEDVLQKTPWSEVEEADGKKLAEILVNTSSENWIRNA
 TVNILEEMNLTELCKMAKAEMMEDGQVQEIDNPELGDAEEDSELAKPGEKEGWRNSMEKQSLVWKNFTWQ
 GDIDNFHDDVTLRNQRFIPFLNPRTPRKLTPYTVVLHGPAGVGKTTLAKKCLDWDTCNLSPTRLRYAFYL
 SCKELSRMGPCSF AELISKDWPELQDDIPSILAQAQRILFVVDGLDELKVPPGALIQDICGDWEKKKVPV
 VLLGSLKLRKMLPRAALLVTTTRPRALRDLQLLAQQPIYVRVEGFLEEDRRAYFLRHFGEDEDQAMRAFELM
 RSNAALFQLGSAPAVCWIVCTTLKLQMEKGEDPVPTCLTRTGLFLRFLCSRFPQGAQLRGALRTL SLLAA
 QGLWAQMSVFHREDLERLGVQESDLRLFLDGDILRQDRVSKGCYSFIHLSFQQFLTALFYALEKEEGEDR
 DGHAWDIGDVQKLLSGEERLKNPDLIQVGHFLFGLANEKRAKELEATFGCRMSPDIKQELLQCKAHLHAN
 KPLSVTDLKEVLGCLYESQEELAKVVVAPFKEISIHNTNTSEVMHCSFSLKHCQDLQKLSLQVAKGVFL
 ENYMFELDIEFERCTYLTIPNWARQDLRSLRLWTFCSLFSNSNLKFLEVKQSFSDSSVRILCDHVT
 RSTCHLQKVEIKNVTPDTAYRDFCLAFIGKKTLLHLAGHIEWERTMMLMLCDLLRNHKCNLQYLRLGG
 HCATPEQWAEFFVYVKANQSLKHLRLSANVLLDEGAMLLYKTMTRPKHFLQMLSENCRLTEASCKDLAA
 VLVVSKKLTCLAKNPIGDTGVKFLCEGLSYPDCKLQTLVLQQCSITKLGCRYLSEALQEACSLTNLDL
 SINQIARGLWILCQALENPNCNLKHLRLWCSLMPFYCQHLGSALLSNQKLETLDLQGNHLWKSIGIKLF
 GVLQRQTGSLKILRLKTYETNLEIKKLLLEVKEKNPKLTIDCNASGATAPPCCDFFC

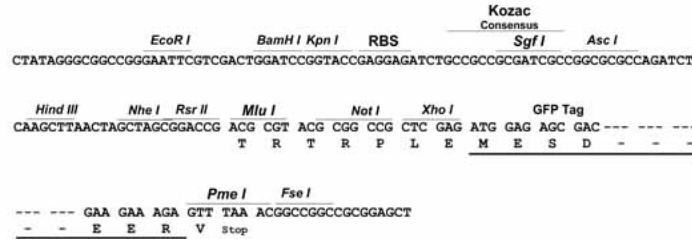
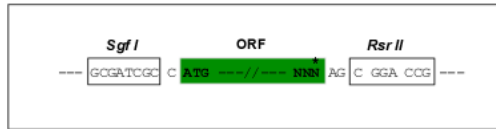
SGPTRRRLE - GFP Tag - V

Restriction Sites:

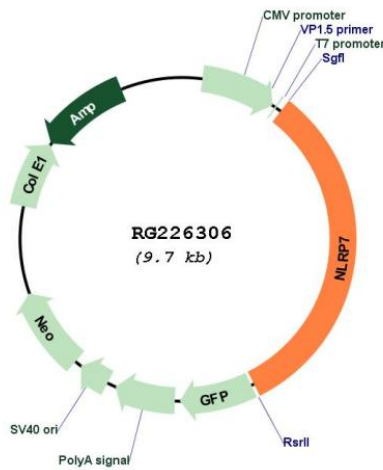
Sgfl-RsrII

Cloning Scheme:

Cloning sites used for ORF Shuttling:



Plasmid Map:



ACCN: NM_001127255

ORF Size: 3111 bp

OTI Disclaimer: The molecular sequence of this clone aligns with the gene accession number as a point of reference only. However, individual transcript sequences of the same gene can differ through naturally occurring variations (e.g. polymorphisms), each with its own valid existence. This clone is substantially in agreement with the reference, but a complete review of all prevailing variants is recommended prior to use. [More info](#)

OTI Annotation:	This clone was engineered to express the complete ORF with an expression tag. Expression varies depending on the nature of the gene.
Components:	The ORF clone is ion-exchange column purified and shipped in a 2D barcoded Matrix tube containing 10ug of transfection-ready, dried plasmid DNA (reconstitute with 100 ul of water).
Reconstitution Method:	<ol style="list-style-type: none">1. Centrifuge at 5,000xg for 5min.2. Carefully open the tube and add 100ul of sterile water to dissolve the DNA.3. Close the tube and incubate for 10 minutes at room temperature.4. Briefly vortex the tube and then do a quick spin (less than 5000xg) to concentrate the liquid at the bottom.5. Store the suspended plasmid at -20°C. The DNA is stable for at least one year from date of shipping when stored at -20°C.
RefSeq:	NM_001127255.1 , NP_001120727.1
RefSeq Size:	3421 bp
RefSeq ORF:	3114 bp
Locus ID:	199713
UniProt ID:	Q8WX94
Cytogenetics:	19q13.42
Gene Summary:	This gene encodes a member of the NACHT, leucine rich repeat, and PYD containing (NLRP) protein family. It has an N-terminal pyrin domain, followed by a NACHT domain, a NACHT-associated domain (NAD), and a C-terminal leucine-rich repeat (LRR) region. NLRP proteins are implicated in the activation of proinflammatory caspases through multiprotein complexes called inflammasomes. This gene may act as a feedback regulator of caspase-1-dependent interleukin 1-beta secretion. Alternative splicing results in multiple transcript variants encoding different isoforms. [provided by RefSeq, Jul 2008]