

Product datasheet for **RG226295**

Phospholipase c eta 1 (PLCH1) (NM_001130961) Human Tagged ORF Clone

Product data:

Product Type:	Expression Plasmids
Product Name:	Phospholipase c eta 1 (PLCH1) (NM_001130961) Human Tagged ORF Clone
Tag:	TurboGFP
Symbol:	PLCH1
Synonyms:	PLC-L3; PLC eta 1; PLCL3
Mammalian Cell Selection:	Neomycin
Vector:	pCMV6-AC-GFP (PS100010)
E. coli Selection:	Ampicillin (100 ug/mL)



[View online »](#)

ORF Nucleotide Sequence:

>RG226295 representing NM_001130961
 Red=Cloning site Blue=ORF Green=Tags(s)

TTTTGTAATACGACTCACTATAGGGCGGCCGGGAATTCGTCGACTGGATCCGGTACCGAGGAGATCTGCC
 GCC**CGCATCGCC**

ATGGCAGACCTTGAAGTGTATAAAAACCTAAGTCCAGAAAAAGTTGAAAGATGCATGAGTGTGATGCAGT
 CCGGGACACAGATGATCAAGCTGAAACGTGGAACCAAAGGGCTTGTCCGCTCTTTTACCTGGATGAGCA
 CCGGACACGCCTCCGATGGCGACCTCTAGGAAGAGTGAGAAGGCAAAAACTATTATTGATTCCATTAC
 AAAGTGAAGTGAAGGGCCGGCAGTCTGAAATATTCCACAGACAAGCTGAGGGGAACCTCGACCCAGCTGCT
 GCTTACCATCTACCATGGCAACCACATGGAGTCCCTGGACCTCATCACCTCCAACCCCGAGGAGGCCCG
 CACCTGGATCACAGGCCTCAAGTACCTGATGGCTGGCATCAGTATGAAGACTCCCTTGCCAAAAGGCAG
 AGGACCCATGACCAATGGGTGAAGCAGACCTTTGAGGAAGCTGATAAGAATGGTGACGGCTTGTGAATA
 TTGAAGAGATACATCAGCTGATGCATAAACTGAATGTTAATCTGCCCCGAAGAAAAGTCAAGCAAAATGTT
 TCAGGAAGCCGACACAGATGAGAATCAGGAACCTTTGACATTTGAAGAGTTCTGTGTTTTTACAAAATG
 ATGTCTTTGAGACGAGACCTTTATTTGTTACTTTTGTGAGCTACAGTGACAAGAAAGATCACCTAAGTGG
 AAGAACTGGCTCAGTTTTTGAAGGTGGAGCAAAAGATGAATAATGTGACAACGGACTATTGTCTTGACAT
 CATAAAGAAGTTTGAAGTTTCAAGAAAATAAGGTGAAAAATGTTCTTGGCATAGAAGGCTTCCAGAAC
 TTCATGCGTAGTCCCTGCCTGTGACATATTTAACCCATTGCACCATGAAGTGTACCAAGACATGGATCAGC
 CCCTCTGCAACTACTACATTGCTTCCCTCTACAATACATACCTGACTGGAGACCAGCTCCTTTCTCAGTC
 CAAAGTGGATATGTATGCACGGGTGCTGCAAGAGGGCTGTGCGTGTGGAAGTTGACTGTTGGGATGGC
 CCAGATGGAGAGCCAGTAGTACATCATGGTTACACTCTCACTTCAAAAATCTCTTCAGAGATGTTGTGG
 AGACCATCAACAAGCATGCCTTTGTGAAGAATGAGTTTTCTGTTATATTGTCTATCGAAGTATGTCAG
 TATCCAGCAGCAAAAGGAAGATTGCTCAGTACCTGAAAGGAATATTCGGAGACAAAACCTGGACCTGTCACT
 GTTGATACAGGGGAGTGAAGCAGCTTCCAAGCCCTCAAAGTTTGAAGGCAAAAATCTAGTGAAGGGTA
 AGAAGTTGCCTTATCACCTTGGGGATGATGCAGAGGAAGGGGAAGTTTCTGATGAGGACAGTGCAGATGA
 AATTGAAGACGAGTGCAAATTCAGCTCCATTATAGTAATGGGACCACTGAGCATCAGGTGGAATCTTTC
 ATAAGGAAAAAAGTGGAGTCACTGTTAAAAGAATCTCAAATTCGAGATAAAGAAGATCCTGATAGTTTCA
 CAGTGCAGGCACTACTGAAGGCCACGCATGAAGGCTTAAATGCACACCTGAAGCAGAGTCCAGATGTAAA
 GGAAGTGGAAAGAAATCACATGGACGATCCCTCATGACCAACTTGGAAAACATAAGAAAACACAAAA
 TCACGGTCTAAATCTTACAGTACTGATGATGAGGAAGACACACAGCAGAGTACTGCAAGGAGGGTGGCC
 AGCTGTACAGATTGGGTGCGCCGAAGGAAAACCATGAAGCTCTGCCGAGAACTCTCTGATTTGGTTGTGTA
 CAAAACTCCGTGGCCGCTCAGGACATTGTGGATGACGGAACCACAGGAAATGTGTTATCATTCAAGTAA
 ACAAGAGCACATCAGGTTGTTCAAGCAAAAATCAGAGCAGTTTATGATTTATAATCAAAGCAACTCACGA
 GGATTTACCCCTCTGCCTACCGCATTGATTCCAGTAACTCAACCCTCTCCCTACTGGAACGCAGGCTG
 CCAGCTAGTGGCACTGAATTATCAATCTGAAGGACGAATGATGCAGTTAAACCGAGCCAAATTCAGGCA
 AATGGCAATTGTGGCTATGTCCTCAAACCCAGCAAATGTGCAAAGGTAATTTCAACCCTTTCTCTGGTG
 ACCCTCTTCTGCAACCCAAAAAGCAGCTCATCCTGAAAGTTATCAGTGGACAGCAACTCCCCAAACC
 TCCAGACTCCATGTTTGGAGATCGAGGCGAGATCATTGACCTTTTGTGAAAGTTGAAATATTGGATTG
 CCAGTAGATTGTTGTAAGATCAAACCCGTGTGGTAGATGACAATGGATTTAACCCCTGTGTGGGAAGAAA
 CACTGACATTTACAGTACACATGCCAGAAATAGCTTTGGTTCCGTTCTTGTGTGGGATCACGATCCCAT
 TGGACGAGACTTTGTTGGACAAAGAAGTGTGACCTTCAAGCAGCTTAGTGCCTGGCTACCGGCATGTCTAT
 TTGGAAGGACTGACAGAAGCATCCATATTTGTACACATAACCAATCAATGAAATCTATGGAAGTGGAGCC
 CTTTAATACTCAACCCAGTTATACTATATTGCACCTTTCTAGGAGCTACAAGAACAGACAACCTCCAGGG
 TCTGAAGGACTGTTCAATAAGAATCCTAGGCACAGTTCTTCAAGAAAACAATCCCATATGTACGGAAG
 CGATCCATTGGAGATAGAATTCTGCGACGCACAGCTAGCGCCCAAGGCAAGGCAAGGAAAAAGGCAAAA
 TGGGCTTCCAAGAAATGGTGGAGATAAAGGATTCTGTGTCGAGGCCACAAGAGATCAAGATGGCGTGT
 GAGGAGGACCACAGCAGTTTGAAGCAGCCCTGTCTATGCCTGTTGACAGAAACCTTCTGGGAGCT
 TTGTGCTGCTGTATCTGAAACAGCAAAAGACATTGAAGGAAAAGAAAACCTCTTAGTACAAATC

ACGCGTACGCGGCCGCTCGAG - GFP Tag - GTTTAA

Protein Sequence: >RG226295 representing NM_001130961
 Red=Cloning site Green=Tags(s)

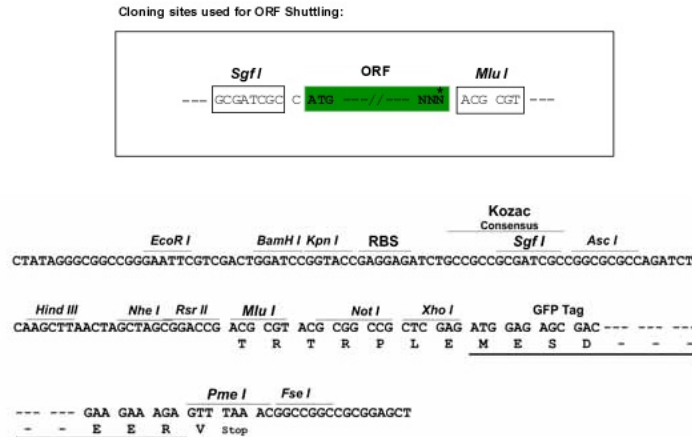
MADLEVYKNLSPEKVERCMSVMQSGTQMIKLRGRTKGLVRLFYLDEHRTRLRWRPSRKSEKAKILIDSIY
 KVTEGRQSEIFHRQAEGNFDPSCCFTIYHGNHMESLDLITSNPEEARTWITGLKYL MAGISDEDSLAKRQ
 RTHDQWVKQTFEEADKNGDGLLNIEEIHQLMHKLNVLPRRKRVRQMFQEADTDENQGTLTFEEFCVFKM
 MSLRRDLYLLLLSYSDKKDHLTVEELAQFLKVEQKMNVTTDYCLDI IKKFEVSEENKVNVLGIEGFTN
 FMRSPACDIFNPLHHEVYQDMDQPLCNYYIASSHNTYLTGDQLLSQSKVDMYARVLQEGCRCVEVDCWDG
 PDGEPVVHHGYTLTSKILFRDVVETINKHAFVKNEFPVILSIENHCSIQQQRKIAQYLKGI FGDKLDLSS
 VDTGECKQLPSPQSLKGIKLVKGGKLPYHLGDAAEEGEVSDSDADEIEDECKFKLHYSNGTTEHQVESF
 IRKKLESLLKESQIRDKEDPDSFTVRALLKATHEGLNAHLKQSPDVKESGKSHGRSLMTNFGKHKKTTK
 SRSKSYSTDDEEDTQQSTGKEGGQLYRLGRRRTMKLCRELSDLVYVTSVAAQDIVDDGTTGNVLSFSE
 TRAHQVVQKSEQFMIYNQKQLTRIYPSAYRIDSSNFNPLPYWNAGCQLVALNYQSEGRMMQLNRAKFKA
 NGNGCYVLKPPQMCKGTNPFSGDPLANPKKQLILKVISGQQLPKPPDSMFGDRGEIIDPFVEVEIIGL
 PVDCCQDQTRVDDNGFNVPVWEETLFTVHMPEIALVRFLVWDHDP IGRDFVGRQTVTFSSLVPGYRHVY
 LEGLTEASIFVHITINEIYGKWSPLILNPSYTIHLHFLGATKNRQLQGLKGLFNKNPRHSSSENNSHYVRK
 RSIGDRILRRTASAPAKGRKSKMGFQEMVEIKDSVSEATR DQDGVLRRTTRSLQARPVSMVPDRNLLGA
 LSLPVSETAKDIEGKENS LVQI

TRTRPLE - GFP Tag - V

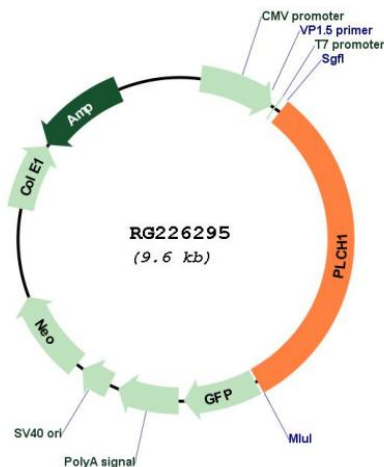
Restriction Sites:

Sgfl-MluI

Cloning Scheme:



Plasmid Map:



ACCN: NM_001130961

ORF Size: 3006 bp

OTI Disclaimer: The molecular sequence of this clone aligns with the gene accession number as a point of reference only. However, individual transcript sequences of the same gene can differ through naturally occurring variations (e.g. polymorphisms), each with its own valid existence. This clone is substantially in agreement with the reference, but a complete review of all prevailing variants is recommended prior to use. [More info](#)

OTI Annotation: This clone was engineered to express the complete ORF with an expression tag. Expression varies depending on the nature of the gene.

Components: The ORF clone is ion-exchange column purified and shipped in a 2D barcoded Matrix tube containing 10ug of transfection-ready, dried plasmid DNA (reconstitute with 100 ul of water).

Reconstitution Method:

1. Centrifuge at 5,000xg for 5min.
2. Carefully open the tube and add 100ul of sterile water to dissolve the DNA.
3. Close the tube and incubate for 10 minutes at room temperature.
4. Briefly vortex the tube and then do a quick spin (less than 5000xg) to concentrate the liquid at the bottom.
5. Store the suspended plasmid at -20°C. The DNA is stable for at least one year from date of shipping when stored at -20°C.

RefSeq: [NM_001130961.2](#)

RefSeq Size: 6473 bp

RefSeq ORF: 3009 bp

Locus ID: 23007

UniProt ID: [Q4KWH8](#)

Cytogenetics: 3q25.31

Protein Families: Druggable Genome

Gene Summary: PLCH1 is a member of the PLC-eta family of the phosphoinositide-specific phospholipase C (PLC) superfamily of enzymes that cleave phosphatidylinositol 4,5-bisphosphate (PtdIns(4,5)P₂) to generate second messengers inositol 1,4,5-trisphosphate (IP₃) and diacylglycerol (DAG) (Hwang et al., 2005 [PubMed 15702972]).[supplied by OMIM, Jun 2009]