

Product datasheet for **RG226293**

Eph receptor A7 (EPHA7) (NM_004440) Human Tagged ORF Clone

Product data:

Product Type:	Expression Plasmids
Product Name:	Eph receptor A7 (EPHA7) (NM_004440) Human Tagged ORF Clone
Tag:	TurboGFP
Symbol:	Eph receptor A7
Synonyms:	EHK-3; EHK3; EK11; HEK11
Mammalian Cell Selection:	Neomycin
Vector:	pCMV6-AC-GFP (PS100010)
E. coli Selection:	Ampicillin (100 ug/mL)



[View online »](#)

ORF Nucleotide
Sequence:

>RG226293 representing NM_004440
 Red=Cloning site Blue=ORF Green=Tags(s)

TTTTGTAATACGACTCACTATAGGGCGGCCGGGAATTCGTCGACTGGATCCGGTACCGAGGAGATCTGCC
 GCCCGCATCGCC

ATGGTTTTTCAAACCTCGGTACCCTTCATGGATTATTTTATGCTACATCTGGCTGCTCCGCTTTGCACACA
 CAGGGGAGGCGCAGGCTCGAAGGAAGTACTACTGCTGGATTCTAAAGCAACAACAACAGAGTTGGAGTG
 GATTTCTCTCCACCAATGGGTGGGAAGAAATTAGTGGTTTGGATGAGAATAACCCCGATACGAACA
 TACCAGGTGTGCCAAGTCATGGAGCCCAACAAAACTGGCTGCGGACTAACTGGATTCCAAAGGCA
 ATGCACAAAGGATTTTTGTAGAATTGAAATTCACCCTGAGGGATTGTAACAGTCTTCTGGAGTACTGGG
 AACTTGAAGGAAACATTTAATTTGACTATTATGAAACAGACTATGACTGCGCAGGAATAAAGAGAA
 AACCTCTATGTAATAAGACACCATTGCTGCAGATGAAAGTTTTACCAAGGTGACCTTGGTGAAGAA
 AGATGAAGCTTAACTAGGAGGAGATTGGACCTTGTCCAAAAGGGATTCTATCTTGCCTTCA
 GGATGTAGGGCTTGCATAGCTTTGGTTCTGTCAAAGTGTACTACAAGAAGTGTGGTCCATTATTGAG
 AACTTAGCTATCTTCCAGATACAGTACTGGTTCAGAATTTTCTCTTTAGTCGAGGTTGAGGGACAT
 GTGTCAGCAGTGCAGAGGAAGAAGCGGAAAACGCCCCAGGATGCACTGCAGTGCAGAAGGAGAATGGTT
 AGTGCCCATTTGAAAAATGTATCTGCAAAGCAGGCTACCAGCAAAAAGGAGACACTTGTGAACCTGTGGC
 CGTGGGTTCTACAAGTCTTCTCTCAAGATCTTCAGTGTCTCGTTGTCCAACCTCACAGTTTTTCTGATA
 AAGAAGGCTCCTCCAGATGTGAATGTGAAGATGGGATTACAGGGCTCCATCTGACCCACCATACGTTGC
 GTGCACAAAGGCTCCATCTGCACCACAGAACCTCATTTTCAACATCAACCAACCACAGTAAAGTTGGAA
 TGGAGTCTCTGCAGACAATGGGGGAAGAAACGATGTGACCTACAGAATATTGTGAAGCGGTGCAGTT
 GGGAGCAGGGCGAATGTGTTCCCTGTGGGAGTAACATTGGATACATGCCCAGCAGACTGGATTAGAGGA
 TAACTATGCTCACTGTCTAGGACCTGCTAGCCACGCTAATTATACTTTTGAAGTTGAAGCTGTAATGGA
 GTTCTGACTTAAGCCGATCCCAGAGGCTCTTGTGCTGTCAGTATCACCAGTGGTCAAGCAGCTCCCT
 CGCAAGTGAAGGAGAGTACTGCAGCGGAGTGTGAGCTTCTCCTGGCAGGAACCAGA
 GCATCCCAATGGAGTCATCACAGAATAGAAATCAAGTATTACGAGAAAGATCAAAGGGAACGGACCTAC
 TCAACAGTAAAAACCAAGTCTACTTCAGCCTCCATTAATAATCTGAAACCAGGAACAGTGTATGTTTTCC
 AGATTCGGGCTTTACTGCTGCTGGTTATGAAATACAGTCCCAGACTGATGTTGCTACACTAGAGGA
 AGCTACAGGTAATGTTGAAGCTACAGTGTCTCCAGTGAACAGAATCCTGTTATTATCATTGCTGTG
 GTTGTGTAGCTGGGACCATTTTTGGTGTTCATGGTCTTTGGCTTTCATATTGGGAGAAGGCACTGTG
 GTTATAGCAAAGCTGACCAAGAAGGCGATGAAGAGCTTTACTTTCAATTTAAATTTCCAGGCACCAAAAC
 CTACATTGACCCTGAAACCTATGAGGACCCAAATAGAGCTGTCCATCAATTCGCCAAGGAGCTAGATGCC
 TCCTGTATTAATTTGAGCGTGTGATTGGTGCAGGAGAATTCGGTGAAGTCTGCAGTGGCCGTTTGAAC
 TTCCAGGGAAAAGAGATGTTGCAGTAGCCATAAAAACCTGAAAGTTGGTTACACAGAAAAACAAAGGAG
 AGACTTTTTGTGTGAAGCAAGCATCATGGGGCAGTTTACCACCCGAATGTTGTCCATTTGGAAGGGTT
 GTTACAAGAGGGAAAACAGTCATGATAGTAATAGAGTTCATGGAAAATGGAGCCCTAGATGCATTTCTCA
 GAAACATGATGGGCAATTTACAGTCATTCAAGTGTAGTGAAGTGTGAGAGGAATTGCTGCTGGAATGAG
 ATATTTGGCTGATATGGGATATGTTACAGGGACCTTGCAGCTCGCAATATTCTTGTCAACAGCAATCTC
 GTTTGTAAGTGTGAGATTTTGGCCTGTCCCGAGTTATAGAGGATGATCCAGAAGCTGTCTATACTACTA
 CTGGTGGAAAAATTCAGTAAGGTGGACAGCACCCGAAGCCATCCAGTACCAGGAAATTCACATCAGCCAG
 TGATGTATGGAGCTATGGAATAGTCATGTGGGAAGTTATGCTTATGGAGAAAAGACCTTATTGGGACATG
 TCAAAATCAAGATGTTATAAAAAGCAATAGAAGAAGTTATCGTTTACCAGCACCCATGGACTGCCAGCTG
 GCCTTACCAGCTAATGTTGGATTGTTGGCAAAAGGAGCGTGTGAAAGGCCAAAATTTGAACAGATAGT
 TGGAAATCTAGACAAAATGATTCGAAACCCAAATAGTCTGAAAACCTCCCTGGGAACTTGTAGTAGGCCA
 ATAAGCCCTCTTCTGGATCAAAACACTCCTGATTTCACTACCTTTTGTTCAGTTGGAGAATGGCTACAAG
 CTATTAAGATGGAAGATATAAAGATAATTTACGGCAGCTGGCTACAATCCCTTGAATCAGTAGCCAG
 GATGACTATTGAGGATGTGATGAGTTTAGGGATCACACTGGTTGGTCATCAAAGAAAATCATGAGCAGC
 ATTCAGACTATGAGAGCAAAATGCTACATTTACATGGAAGTGGCATTCAAGT

ACGCGTACGCGGCCGCTCGAG – GFP Tag – GTTTAA

Protein Sequence: >RG226293 representing NM_004440
Red=Cloning site Green=Tags(s)

```

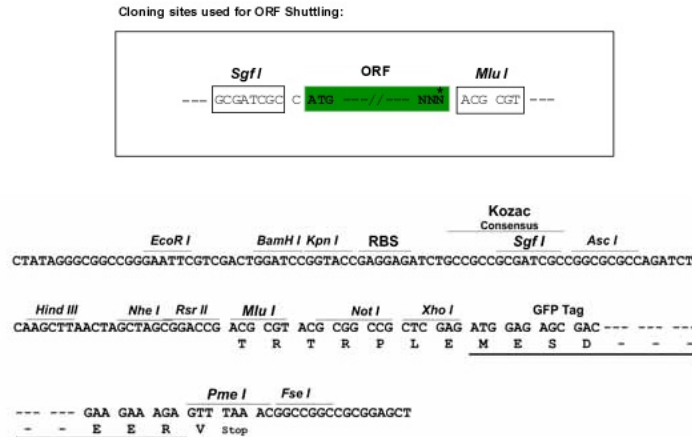
MVFQTRYPSWIILCYIWLLRFAHTGEAQAQAEVLLLDLSKAQQTELEWISSPPNGWEEISGLDENYTPIRT
YQVCQVMEPNQNNLRTNWI SKGNAQRIFVELKFTLRDCNSLPGVLGTCKETFNLYYYETDYDTGRNIRE
NLYVKIDTIAADESFTQGD LGERKMKLNTEVREIGPLSKKGFYLA FQDVGACIALVSVKVYYKKCWSIIE
NLAIFPDTVTGSEFSSLVEVRGTCVSSAEAAAENAPRMHCSAEGEWLVPIGKCICKAGYQQKGDTCPCG
RGFYKSSSQDLQCSRCPTHSFSDKEGSSRCECEDGYRAPSDPPYVACTRPPSAPQNLIFNINQTTVSLE
WSPPADNGGRNDVYRILCKRCSWEQGEVPCGSNIGYMPQQTGLEDNVYVMDLLAHANYTFEVEAVNG
VSDLRSQRLFAAVSITGQAAPSQVSGVMKERV LQRSVELSWQEPEHPNGVITEYEIKYEEKDQRERTY
STVKTSTASINNLKPGTVVYVFQIRAF TAAGYGNYSRDLVATLEEATGKMFEATAVSSEQNPV IIAV
VAVAGT IILVFMVFGF IIGRRHCGYSKADQEGDEEL YFHFKFPGTKTYIDPETYEDPNRAVHQFAKELDA
SCIKIERVIGAGEFGEVCSGRLKLPGRDVAVAIKTLKVGYTEKQRRDFLCEASIMGQFDHPNVVHLEGV
VTRGKPVMI VIEFMENGALDAFLRKHDGQFTVIQLVGMLR GIIAAGMRYLADMGYVHRDLAARNILVNSNL
VCKVSDFGLSRVIEDDPEAVYTTTGGKIPVRWTAPEAIQYRKFTSASDVWSYGI VMWEVMSYGERPYWDM
SNQDVIKAIIEEGYRLPAPMDCPAGLHQLMLDCWQKERAERP KFEQIVGILDKMIRNPNSLKTPLGTCSR P
ISPLLDQNTPDFTTFC SVGEWLQA IKMERYKDNFTAAGYNSLESV ARMTIEDVMSLGITLVGHQKKIMSS
IQTMRAQMLHLHGTGIQV
    
```

TRTRPLE – GFP Tag – V

Restriction Sites:

Sgfl-MluI

Cloning Scheme:



ACCN: NM_004440

ORF Size: 2994 bp

OTI Disclaimer: Due to the inherent nature of this plasmid, standard methods to replicate additional amounts of DNA in E. coli are highly likely to result in mutations and/or rearrangements. Therefore, OriGene does not guarantee the capability to replicate this plasmid DNA. Additional amounts of DNA can be purchased from OriGene with batch-specific, full-sequence verification at a reduced cost. Please contact our customer care team at custsupport@origene.com or by calling 301.340.3188 option 3 for pricing and delivery.

The molecular sequence of this clone aligns with the gene accession number as a point of reference only. However, individual transcript sequences of the same gene can differ through naturally occurring variations (e.g. polymorphisms), each with its own valid existence. This clone is substantially in agreement with the reference, but a complete review of all prevailing variants is recommended prior to use. [More info](#)

OTI Annotation: This clone was engineered to express the complete ORF with an expression tag. Expression varies depending on the nature of the gene.

Components: The ORF clone is ion-exchange column purified and shipped in a 2D barcoded Matrix tube containing 10ug of transfection-ready, dried plasmid DNA (reconstitute with 100 ul of water).

Reconstitution Method:

1. Centrifuge at 5,000xg for 5min.
2. Carefully open the tube and add 100ul of sterile water to dissolve the DNA.
3. Close the tube and incubate for 10 minutes at room temperature.
4. Briefly vortex the tube and then do a quick spin (less than 5000xg) to concentrate the liquid at the bottom.
5. Store the suspended plasmid at -20°C. The DNA is stable for at least one year from date of shipping when stored at -20°C.

RefSeq: [NM_004440.4](#)

RefSeq Size: 6644 bp

RefSeq ORF: 2997 bp

Locus ID: 2045

UniProt ID: [Q15375](#)

Cytogenetics: 6q16.1

Domains: pkinase, EPH_lbd, TyrKc, SAM, S_TKc, FN3

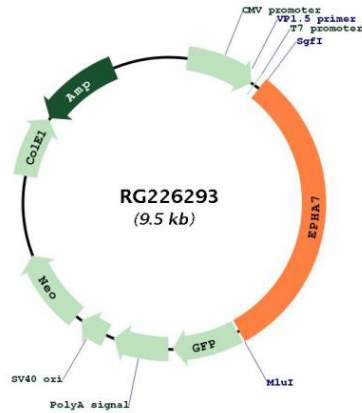
Protein Families: Druggable Genome, Protein Kinase, Transmembrane

Protein Pathways: Axon guidance

Gene Summary:

This gene belongs to the ephrin receptor subfamily of the protein-tyrosine kinase family. EPH and EPH-related receptors have been implicated in mediating developmental events, particularly in the nervous system. Receptors in the EPH subfamily typically have a single kinase domain and an extracellular region containing a Cys-rich domain and 2 fibronectin type III repeats. The ephrin receptors are divided into 2 groups based on the similarity of their extracellular domain sequences and their affinities for binding ephrin-A and ephrin-B ligands. Increased expression of this gene is associated with multiple forms of carcinoma. Alternative splicing results in multiple transcript variants. [provided by RefSeq, Dec 2013]

Product images:



Circular map for RG226293