

Product datasheet for **RG226288**

UBAP2L (NM_001127320) Human Tagged ORF Clone

Product data:

Product Type:	Expression Plasmids
Product Name:	UBAP2L (NM_001127320) Human Tagged ORF Clone
Tag:	TurboGFP
Symbol:	UBAP2L
Synonyms:	NICE-4; NICE4
Mammalian Cell Selection:	Neomycin
Vector:	pCMV6-AC-GFP (PS100010)
E. coli Selection:	Ampicillin (100 ug/mL)



[View online »](#)

ORF Nucleotide Sequence:

>RG226288 representing NM_001127320
 Red=Cloning site Blue=ORF Green=Tags(s)

TTTTGTAATACGACTCACTATAGGGCGGCCGGGAATTCGTCGACTGGATCCGGTACCGAGGAGATCTGCC
 GCC**CGCATCGCC**

ATGATGACATCGGTGGGACTAACCAGCCGGGAACTGGGAACAACCTCAAACCAAACCAGACAC
 AGCACAAGCAGCGGCCACAGGCCACTGCAGAACAATTAGACTTGACAGATGATTCGGACCATAATGA
 TGCTGACTTTGAGGAGAAGGTGAAACAATTGATTGATATTACAGGCAAGAACCAGGATGAATGTGTGATT
 GCTTTGCATGACTGCAATGGAGATGTCAACAGAGCTATCAATGTTCTTCTGGAAGGAAACCAGACACGC
 ATTCCTGGGAGATGGTCGGGAAGAAGAAGGGAGTCTCAGGCCAGAAGGATGGTGGCCAGACGGAATCCAA
 TGAGGAAGGCCAAAGAAAATCGAGACCGGGACAGAGACTATAGTCGGCGACGTGGTGGCCACCAAGACGG
 GGGAGAGGTGCCAGCCGTGGACGAGAGTTTCGAGGTGAGGAAAATGGATTGGATGCCACCAAGAGTGGAG
 GGCCTTCTGGAAGAGGAACAGAAAGAGGCAGAAGGGGCCGTGGCCGAGGCAGAGGTGGCTCTGGTAGGCC
 AGGAGGAAGGTTTTCTGCTCAAGGAATGGGAACCTTTAACCCAGCTGATTATGCAGAGCCAGCCAATACT
 GATGATAACTATGGCAATAGCAGCGCAATACGTGGAACAACACTGGCCACTTTGAACCAGATGATGGGA
 CGAGTGCATGGAGGACTGCAACAGAGGAGTGGGGGACTGAAGATTGGAATGAAGATCTTTCTGAGACCAA
 GATCTTCACTGCCTCTAATGTGTCTTCACTGCCTCTGCCTGCGGAGAATGTGACAATCACTGCTGGTCAG
 AGAATTGACCTTGCTGTTCTGCTGGGAAGACACCATCTACAATGGAGAATGATTCATCTAATCTGGATC
 CGTCTCAGGCTCCTTCTGCGCCAGCCTCTGGTGTTCAGTAATTCGAAGCAGACTGCCATATCACAGCC
 TGCTTCAGGGAACACATTTCTCATCACAGTATGGTGAGCATGTTAGGAAAAGGATTTGGTGATGTCGGT
 GAAGCTAAAGGCGGCAGTACTACAGGCTCCAGTCTTGGAGCAATCAAGACTGCCAAGCCCTGGCTC
 AGTTGGCAGCTCAGCATTCTCAGTCTGGAAGCACCACCCTCCTCTTGGGACATGGGCTCGACAGACACA
 ATCCCCATCACTGGTGCAGTATGATTTGAAGAACCCTAAGTGATTACAGCAGTGCACAGCCCTTTACAAAG
 CGCCAGGCTTTTACCCATCTTCAACCATGATGGAGGTGTTCTTTCAGGAGAAGTACCTGCAGTGGCTA
 CCTCCACAGCTGCACCTCCACCTCCGTCTTCTCCTCTGCCAAGCAAATCCACATCGGCTCCACAGATGTC
 GCCTGGATCTTACAGACAACCAGTCTCTAGCCCTCAGCCGGCTCAGCAGAACTGAAACAGCAGAAGAAA
 AAAGCCTCCTTGACTTCTAAGATTCCTGCTCTGGCTGTGGAGATGCCTGGCTCAGCAGATATCTCAGGGC
 TAAACCTGCAGTTTGGGGCATTGCAGTTTGGGTGAGCCTGTCTTTCTGATTATGAGTCCACCCCCAC
 CACGAGCGCCTCTCAAGCCAGGCTCCAAGTAGCCTGTATACCAGCACGGCCAGTGAATCATCTCTACA
 ATTTTCATCTAACCAGAGTCAAGAGTCTGGTTATCAGAGCGGCCAATTCAGTCGACAACCTATACCTCCC
 AAAATAATGCTCAGGGCCCTCTTATGAACAGAGATCCACACAGACTCGGCGGTACCCACGCTCCATCTC
 TTCATCACCCCAAAGGACCTGACTCAGGCAAAGAATGGCTTCAGTTCTGTGCAGGCCACGAGTTACAG
 ACCACACAATCTGTTGAAGGTGCTACAGGCTCTGCAGTGAATCTGATTCACCTTCCACTTCTAGCATCC
 CCCCTCTCAATGAAACGGTATCTGCAGTTCCTTACTGACGACAACCAATCAGCATTATCTCCTTGGG
 TGGCTTGAGCCACAGTGAAGGAGATTCAAATACTACCACCACACAACACAGCAGCACGTTATCTACGCAG
 CAGAATACCCTTTCATCATCAACATCTTCTGGGCGCACTTCGACATCCACTCTTTTGACACAAGTGTGG
 AGAGTGAGGCGAATCTCCATTCTTCTCCAGCACTTTTCCACCACATCCAGCACAGTCTCTGCACCTCC
 CCCAGTGGTCAGTGTCTCCTCCAGTCTCAATAGTGGCAGTAGCCTGGGCTCAGCCTAGGCAGCAACTCC
 ACTGTACAGCCTCGACTCGAAGCTCAGTTGCTACGACTTCAGGAAAAGCTCCTCCAACCTCCCTCCTG
 GGTCCCAGCGTGTGCTAATCCGTATATTATGGCTCCAGGGCTGTTACATGCCTACCCGCCACAAGT
 ATATGGTTATGATGACTTGACAGATGCTTACAGACAAGATTTCCATTGGATTACTACAGCATCCCATTTCCC
 ACACCCACTACTCCGCTGACTGGGAGGGATGGTAGCCTGGCCAGCAACCTTATTCTGGTGACCTCACAA
 AGTTGGGCGTGGGGATGCCTCTCCCCAGCCCGGCCACAACCTTGGCCAAACCCCAACAGAACCAGAC
 GCAGACTACCATAACCACGCAGCAGACATTCTGAACCCGGCGCTGCCTCCTGGTACAGTTACACCAGC
 CTGCCATACTATACAGGGGTCCCGGCCCTCCCCAGCACCTTCCAGTATGGGCTGCTGTGTTCCCTGTGG
 CTCTACCTCTTCAAGCAGCATGGTGTGAATGTCAGTGTGAATGCATCGCCACCCCTTCCAACAGCC
 GAGTGGATATGGGTCTCATGGATACAACACTGGAAGAAAATATCCACCCCTTACAAGCATTCTGGAGC
 GCTGAGAGC

ACGCGTACGCGGCCGCTCGAG - GFP Tag - GTTTAA

Protein Sequence: >RG226288 representing NM_001127320
 Red=Cloning site Green=Tags(s)

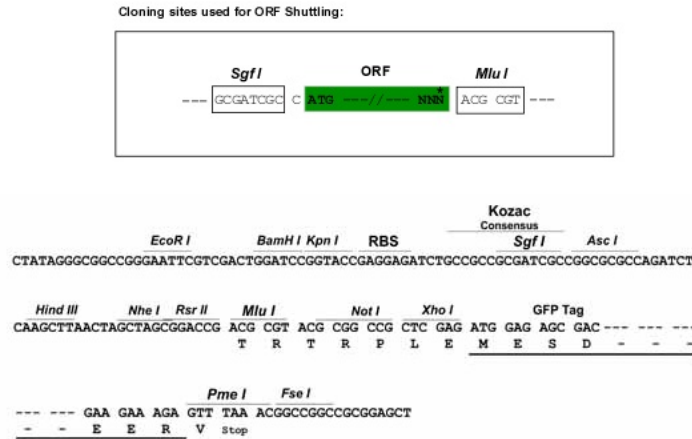
```

MMTSVGTNRARGNWEQPQNQNTQHKQRPQATAEQIRLAQMI SDHNDADFEKVKQLIDITGKNQDECVI
ALHDCNGDVNRAINVLLEGNPDTHSWEMVGKKKGVSGQKDGQTESNEEGKENRDRDRDYSRRRGPPRR
GRGASRGREFRQENGLDGTKSGGPSGRGTERGRRGRGRGSGRRGRFSAQGMGT FNPADYAE PANT
DDNYGNSSGNTWNNTGHFEPDDGTSAWRATEEWGTE DWNE DLSE TKIF TASNVS VPLPAENVITAGQ
RIDLAVLLGKTPSTMENDSSNLDP SQAPSLAQPLVFSNSKQT AISQPASGNTF SHHSMV SMLGKGF DVG
EAKGGSTTGSQFLEQFKTAQALAAQHSQSGSTTTSSWDMGSTTQSPSLVQYDLKNP SDSAVHSPFTK
RQAFTPSSTMMEVFLQEKSPAVATSTAAPPPSSPLPSKSTSAPQMSPGSSDNQSSSPQAQQK LKQQKK
KASLTSKIPALAVEMPGSADISGLNLQFGALQFGSEPVLSDYESTPTTSASSSQAPSSLYTSTASESSST
ISSNQSQESGYQSGPIQSTTYTSQNNAQGPLYEQRSTQTRRYPSSISSSPQKDLTQAKNGFSSVQATQLQ
TTQSVEGATGSAVKSDSPSTSSIPPLNETVSAASLLTTTNQHSSSLGGLSHSEEIPNTTTTQHSSTLSTQ
QNTLSSSTSSGRTSTSTLLHTSVESEANLHSSSSTFSTTSSTVSAPPVSVSSSLNSGSSLGLSLGNSNS
TVTASTRSSVATTSGKAPPNLP PGVPPLLPNPYIMAPGL LHAYPPQVYGYDDLQMLQTRFPLDYYSIPFP
TPTTPLTGRDGLASN PYS GDLTKFGRGDASSPAPATTLAQPQQNQTTQTHHTTQQTFLNPALPPGYSYTS
LPYYTGVPGLPSTFQYGPVFPVAPTSSKQHG VNVSVNASATPFQQPSGYSGHGYNTGRKYPPPYKHFWT
AES
  
```

TRTRPLE - GFP Tag - V

Restriction Sites: SgfI-MluI

Cloning Scheme:

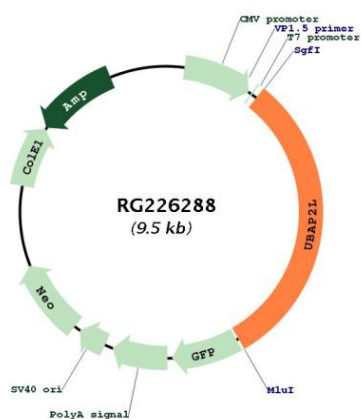


ACCN: NM_001127320

ORF Size: 2949 bp

OTI Disclaimer:	The molecular sequence of this clone aligns with the gene accession number as a point of reference only. However, individual transcript sequences of the same gene can differ through naturally occurring variations (e.g. polymorphisms), each with its own valid existence. This clone is substantially in agreement with the reference, but a complete review of all prevailing variants is recommended prior to use. More info
OTI Annotation:	This clone was engineered to express the complete ORF with an expression tag. Expression varies depending on the nature of the gene.
Components:	The ORF clone is ion-exchange column purified and shipped in a 2D barcoded Matrix tube containing 10ug of transfection-ready, dried plasmid DNA (reconstitute with 100 ul of water).
Reconstitution Method:	<ol style="list-style-type: none"> 1. Centrifuge at 5,000xg for 5min. 2. Carefully open the tube and add 100ul of sterile water to dissolve the DNA. 3. Close the tube and incubate for 10 minutes at room temperature. 4. Briefly vortex the tube and then do a quick spin (less than 5000xg) to concentrate the liquid at the bottom. 5. Store the suspended plasmid at -20°C. The DNA is stable for at least one year from date of shipping when stored at -20°C.
RefSeq:	NM_001127320.2
RefSeq Size:	3410 bp
RefSeq ORF:	2952 bp
Locus ID:	9898
UniProt ID:	Q14157
Cytogenetics:	1q21.3
Protein Families:	Druggable Genome
Gene Summary:	Plays an important role in the activity of long-term repopulating hematopoietic stem cells (LT-HSCs).[UniProtKB/Swiss-Prot Function]

Product images:



Circular map for RG226288