

## Product datasheet for **RG226261**

### SPINK5 (NM\_001127699) Human Tagged ORF Clone

#### Product data:

Product Type:	Expression Plasmids
Product Name:	SPINK5 (NM_001127699) Human Tagged ORF Clone
Tag:	TurboGFP
Symbol:	SPINK5
Synonyms:	LEKTI; LETKI; NETS; NS; VAKTI
Mammalian Cell Selection:	Neomycin
Vector:	pCMV6-AC-GFP (PS100010)
E. coli Selection:	Ampicillin (100 ug/mL)



[View online »](#)

**ORF Nucleotide Sequence:**

>RG226261 representing NM\_001127699  
 Red=Cloning site Blue=ORF Green=Tags(s)

TTTTGTAATACGACTCACTATAGGGCGGCCGGAATTCGTGACTGGATCCGGTACCGAGGAGATCTGCC  
 GCC**CGCATCGCC**

ATGAAGATAGCCACAGTGTCACTGCTTCTGCCCTTGGCTCTTTCCTCATACAAGATGCTGCCAGTAAAG  
 ATGAAGATCAGGAAATGTCCATGAATTTCAAGCATTATGAAAAATGGAAAAGTCTTGTGCCAGGA  
 TAAGAAATTTTTTCAAAGTCTTGATGGAATAATGTTTCATCAATAAATGTGCCACGTGCAAAAATGATACTG  
 GAAAAAGAAGCAAAAATCACAGAAGAGGGCCAGGCATTTAGCAAGAGCTCCCAAGGCTACTGCCCCAACAG  
 AGCTGAATTTGTGATGATTTTAAAAAGGAGAAAGAGATGGGGATTTTATCTGTCTGATTATTATGAAGC  
 TGTTTGTGGCACAGATGGGAAAACATATGACAACAGATGTGCACTGTGTGCTGAGAATGCGAAAACCGGG  
 TCCCAAATTTGGTGTAAAAAGTGAAGGGGAATGTAAGAGCAGTAAATCCAGAGCAGGATGTATGCAGTGCTT  
 TTCGGCCCTTTGTAGAGATGGAAGACTTGGATGCACAAGGAAAATGATCCTGTTCTTGGTCTGTATGG  
 GAAGACGCATGGCAATAAGTGTGCAATGTGTGCTGAGCTGTTTTTAAAAGAAGCTGAAAAATGCCAAGCGA  
 GAGGGTGAAGACTAGAATTCGACGAAAATGCTGAAAAGGATTTTTGCAAGGAATATGAAAAACAAGTGAGAA  
 ATGGAAGGCTTTTTTGTACACGGGAGAGTGATCCAGTCCGTGGCCCTGACGGCAGGATGCATGGCAACAA  
 ATGTGCCCTGTGTGCTGAAATTTTCAAGCAGCGTTTTTTCAGAGGAAAACAGTAAAACAGATCAAAATTTG  
 GGAAAAGCTGAAGAAAAAATAAGTAAAAGAGAAAATTTGAAAAGTCTGCAGTCAATATCAAAATCAGG  
 CAAAGAATGGAATACTTTTCTGTACCAGAGAAAATGACCCATTCGTGGTCCAGATGGGAAAATGCATGG  
 CAACTTGTGTCCATGTGTCAAGCCTACTTCCAAGCAGAAAATGAAGAAAAGAAAAGGCTGAAGCACGA  
 GCTAGAAAACAAAAGAGAATCTGGAAAAGCAACCTCATATGCAGAGCTTTGCAGTGAATATCGAAAAGCTTG  
 TGAGGAACGGAAAATTTGCTTGCACCAGAGAACGATCCTATCCAGGGCCAGATGGGAAAAGTGGCAATGG  
 CAACACCTGTCCATGTGTGAGGCTTCTTCCAAGCAGAAGAAGAAGAAAAGAAAAGAAAGGAAAGGTAAA  
 TCAAGAAAACAAAAGACAATCTAAGAGTACAGCTTCTTTGAGGAGTTGTGTAGTGAATACCGCAAAATCCA  
 GGAAAACCGACGGCTTTTTTGCACCAGAGAGAATGACCCATCCAGGGCCAGATGGAAAATGCATGG  
 CAACACCTGTCCATGTGTGAGGCTTCTTTCAACAAGAAGAAGAGCAAGAGCAAAAGGCTAAAAGAGAA  
 GCTGCAAAGGAAATCTGCAGTGAATTTTCGGACCAAGTGAGGAATGGAACACTTATATGCACCAGGGAGC  
 ATAATCCTGTCCGTGGCCAGATGGCAAAATGCATGGAAAACAGTGTGCCATGTGTGCCAGTGTGTTCAA  
 ACTTGAAGAAGAAGAGAAGAAAATGATAAAGAAGAAAAGGAAAAGTTCGAGGCTGAAAAGTAAAGAGA  
 GAAGCAGTTCAGGAGCTGTGCAGTGAATATCGTCATTATGTGAGGAATGGACGACTCCCCTGTACCAGAG  
 AGAATGATCCTATTGAGGCTAGATGGGAAAATCCACGCAACACCTGTCCATGTGTGAAGCCTTCTT  
 CCAGCAAGAAGCAAAAAGAAAAGAAAGAGCTGAACCCAGAGCAAAAAGTCAAAAAGAGAAGCTGAAAAGGAG  
 ACATGCGATGAATTTTCGGAGACTTTTGCAAAATGGAAAATTTTCTGCACAAGAGAAAATGATCCTGTGC  
 GTGGCCAGATGGCAAGACCCATGGCAACAAGTGTGCCATGTGTAAAGCAGTCTTCCAGAAAAGAAAATGA  
 GGAAAAGAAAGAGGAAAAGAGGAAAGATCAGAGAAAATGCTGCAGGACATGGTTCCAGTGGTGGTGGAGGA  
 GGAAACACTCAGGACGAATGTGCTGAGTATCGGGAACAAATGAAAATGGAAGACTCAGCTGTACTCGGG  
 AGAGTGATCCTGTACGTGATGCTGATGGCAAATCGTACAACAATCAGTGTACCATGTGTAAGCAAAAAT  
 GGAAAGAGAAGCAGAGAGAAAAATGAGTATTCTCGCTCCAGATCAAATGGGACTGGATCAGAATCAGGG  
 AAGGATACATGTGATGAGTTTGAAGCCAAATGAAAATGGAAAATCATCTGCACTCGAGAAAAGTGAAC  
 CTGTCCGGGTCCAGATGGCAAGACACATGGCAATAAGTGTACTATGTGTAAAGAAAATGAAAAGGGA  
 AGCAGCTGAAAAAAAAGAAAAGAGGATGAAGACAGGAGCAATACAGGAGAAAAGGAGCAATACAGGAGAA  
 AGGAGCAATGACAAAGAGGATCTGTGTCGTGAATTTTCAAGCATGCAGAGAAAATGAAAAGCTTATCTGCA  
 CCAGAGAAAATAACCCTGTTTCGAGGCCATATGGCAAGATGCACATCAATAAATGTGCTATGTGTCAGAG  
 CATCTTTGATCGAGAAGCTAATGAAAGAAAAGAAAAGATGAAGAGAAAATCAAGTAGCAAGCCCTCAAAAT  
 AATGCAAAGGTTATTTAT

**ACGCGT**ACGCGGCCGCTCGAG – GFP Tag – GTTTAA

**Protein Sequence:** >RG226261 representing NM\_001127699  
 Red=Cloning site Green=Tags(s)

```

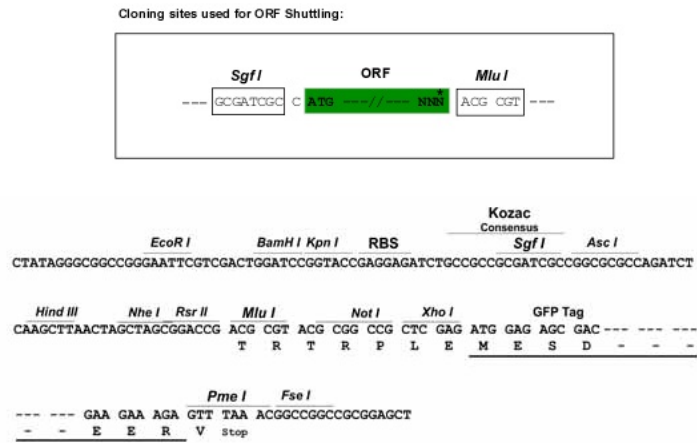
MKIATVSVLLPLALCLIQDAASKNEDQEMCHEFQAFMKNKGLFCPQDKKFFQSLDGIMFINKCATCKMIL
EKEAKSQKRARHLARAPKATAPTELNCDDFKKGERDGFICPDYEA VCGTDGKTYDNRCALCAENAKTG
SQIGVKSEGECKSSNPEQDVCSAFRPFVVDGRLGCTRENDPVLGPDGKTHGNKCAMCAELFLKEAENAKR
EGETRIRRNAEKDFCKEYEQVRNGRLFCITRESDPVRGPDGRMHGNKCALCAEIFKQRFSEENSKTDQNL
GKAEEKTKVKREIVKLCSEQYQNAKNGILFCTRENDPIRGPDKMGHNLCSMCQAYFQAENEEKKAEAR
ARNKRESGKATSYAELCSEYRKLVRNGKLACTRENDPIQGPDKVHGNTCSMCEVFFQAEKEEKKKKEGK
SRNKRQSKSTASFEELCSEYRSRKNRGLFCITRENDPIQGPDKMGHNTCSMCEAFFQEEERARAKAKRE
AAKEICSEFRDQVRNGLICTREHNPVRGPDGKMGHNCAMCASVFKLEEEKKNDKEEKGVAEKVYK
EAVQELCSEYRHYVRNGLPCTRENDPIEGLDGIHGNTCSMCEAFFQEAKEKERAEPRAKVKREA EKE
TCDEFRRLLQNGKLFCTRENDPVRGPDGKTHGNKCAMCKAVFQKENEERKRKEEEDQRNAAGHGSSGGGG
GNTQDECAEYREQMKNRGLSCTRESDPVRDADGKSYNNQCTMCKAKLERAERKNEYSRSRNNGTGSESG
KDTCDFRSQMKNGKLICTRESDPVRGPDGKTHGNKCTMCKEKLEREAEEKKKKEDEDRSNTGERSNTGE
RSNDKEDLCREFRSMQRNGKLICTRENPNVGRPYGKMHINKCAMCQSI F DREANERKKKDEEKSSSKPSN
NAKVIY
  
```

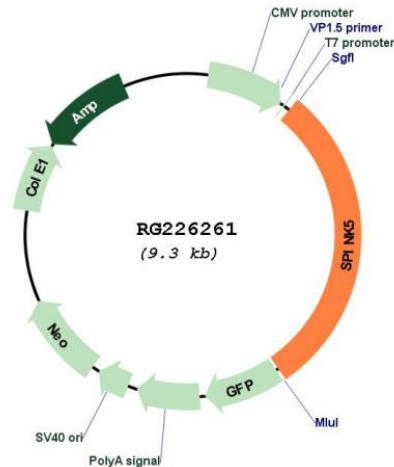
TRTRPLE – GFP Tag – V

**Restriction Sites:**

SgfI-MluI

**Cloning Scheme:**



**Plasmid Map:**


**ACCN:** NM\_001127699

**ORF Size:** 2748 bp

**OTI Disclaimer:** The molecular sequence of this clone aligns with the gene accession number as a point of reference only. However, individual transcript sequences of the same gene can differ through naturally occurring variations (e.g. polymorphisms), each with its own valid existence. This clone is substantially in agreement with the reference, but a complete review of all prevailing variants is recommended prior to use. [More info](#)

**OTI Annotation:** This clone was engineered to express the complete ORF with an expression tag. Expression varies depending on the nature of the gene.

**Components:** The ORF clone is ion-exchange column purified and shipped in a 2D barcoded Matrix tube containing 10ug of transfection-ready, dried plasmid DNA (reconstitute with 100 ul of water).

**Reconstitution Method:**

1. Centrifuge at 5,000xg for 5min.
2. Carefully open the tube and add 100ul of sterile water to dissolve the DNA.
3. Close the tube and incubate for 10 minutes at room temperature.
4. Briefly vortex the tube and then do a quick spin (less than 5000xg) to concentrate the liquid at the bottom.
5. Store the suspended plasmid at -20°C. The DNA is stable for at least one year from date of shipping when stored at -20°C.

**RefSeq:** [NM\\_001127699.2](#)

**RefSeq Size:** 2915 bp

**RefSeq ORF:** 2751 bp

**Locus ID:** 11005

**UniProt ID:** [Q9NQ38](#)

**Cytogenetics:** 5q32

**Gene Summary:**

This gene encodes a multidomain serine protease inhibitor that contains 15 potential inhibitory domains. The encoded preproprotein is proteolytically processed to generate multiple protein products, which may exhibit unique activities and specificities. These proteins may play a role in skin and hair morphogenesis, as well as anti-inflammatory and antimicrobial protection of mucous epithelia. Mutations in this gene may result in Netherton syndrome, a disorder characterized by ichthyosis, defective cornification, and atopy. This gene is present in a gene cluster on chromosome 5. Alternative splicing results in multiple transcript variants. [provided by RefSeq, Oct 2015]