

Product datasheet for **RG226259**

alpha Actinin (ACTN1) (NM_001130004) Human Tagged ORF Clone

Product data:

Product Type:	Expression Plasmids
Product Name:	alpha Actinin (ACTN1) (NM_001130004) Human Tagged ORF Clone
Tag:	TurboGFP
Symbol:	alpha Actinin
Synonyms:	BDPLT15
Mammalian Cell Selection:	Neomycin
Vector:	pCMV6-AC-GFP (PS100010)
E. coli Selection:	Ampicillin (100 ug/mL)



[View online »](#)

ORF Nucleotide
Sequence:

>RG226259 representing NM_001130004
Red=Cloning site Blue=ORF Green=Tags(s)

TTTTGTAATACGACTCACTATAGGGCGGCCGGGAATTCGTCGACTGGATCCGGTACCGAGGAGATCTGCC
GCC**CGGATCGCC**

ATGGACCATTATGATTCTCAGCAAACCAACGATTACATGCAGCCAGAAGAGGACTGGGACCGGGACCTGC
TCCTGGACCCGGCTGGGAGAAGCAGCAGAGAAAAGACATTCACGGCATGGTGTAACCTCCACCTCCGGAA
GGCGGGGACACAGATCGAGAACATCGAAGAGGACTTCCGGGATGGCCTGAAGCTCATGCTGCTGGAG
GTCATCTCAGGTGAACGCTTGGCCAAGCCAGAGCGAGGCAAGATGAGAGTGCACAAGATCTCCAACGTCA
ACAAGGCCCTGGATTTTCATAGCCAGCAAAGGCGTCAAACCTGGTGTCCATCGGAGCCGAAGAAATCGTGG
TGGGAATGTGAAGATGACCCTGGGCATGATCTGGACCATCATCTGCGCTTTGCCATCCAGGACATCTCC
GTGGAAGAGACTTCAGCCAAGGAAGGGTCTCCTGTGGTGTGAGAGAAAGACAGCCCTTACAAAAATG
TCAACATCCAGAACTTCCACATAAGCTGGAAGGATGGCCTCGGCTTCTGTGCTTTGATCCACCGACCCG
GCCCGAGCTGATTGACTACGGGAAGCTGCGGAAGGATGATCCACTCACAATCTGAATACGGCTTTTGAC
GTGGCAGAGAAGTACCTGGACATCCCAAGATGCTGGATGCCGAAGACATCGTTGGAACCTGCCCGACCGG
ATGAGAAAAGCCATCATGACTTACGTGTCTAGCTTCTACCACGCCTTCTCTGGAGCCAGAAGCGGAGAC
AGCAGCCAATCGCATCTGCAAGGTGTTGGCCGTCAACCAGGAGAACGAGCAGCTTATGGAAGACTACGAG
AAGCTGGCCAGTGTCTGTTGGAGTGGATCCGCCGCACAAATCCCGTGGCTGGAGAACCGGTGCCCGAGA
ACACCATGCATGCCATGCAACAGAAGCTGGAGGACTTCCGGGACTACCGGCGCTGCACAAGCCGCCAA
GGTGCAGGAGAAGTGCAGCTGGAGATCAACTTCAACACGCTGCAGACCAAGCTGCGGCTCAGCAACCGG
CCTGCCTTCATGCCCTCTGAGGGCAGGATGGTCTCGGACATCAACAATGCCTGGGGCTGCCTGGAGCAGG
TGGAGAAGGGCTATGAGGAGTGGTGTGATGAGATCCGGAGGCTGGAGCGACTGGACACCTGGCAGA
GAAGTTCCGGCAGAAGGCCCTCCATCCACGAGGCCCTGGACTGACGGCAAAGAGGCCATGCTGCGACAGA
GACTATGAGACCGCCACCCTCTCGGAGATCAAGGCCCTGCTCAAGAAGCATGAGGCCTTCGAGAGTGACC
TGGCTGCCACCAGGACCGTGTGGAGCAGATTGCCCCATCGCACAGGAGCTCAATGAGCTGGACTATTA
TGACTACCCAGTGTCAACGCCCTTGCACAAAAGATCTGTGACCAGTGGGACAATCTGGGGGCCCTAACT
CAGAAGCGAAGGGGAGCTCTGGAGCGGACCGAGAAAAGCTGGAGACCATTGACCAGCTGTACTTGGAGT
ATGCCAAGCGGGTGCACCCTTCAACAAGTGGATGGAGGGGGCCATGGAGGACCTGCAGGACACCTTCAT
TGTGCACACCATTGAGGAGATCCAGGGACTGACCACAGCCATGAGCAGTTCAGGCCACCCTCCCTGAT
GCCGACAAGGAGCGCCTGCCATCCTGGGCATCCACAATGAGGTGTCCAAGATTGTCAGACCTACCACG
TCAATATGGCGGGCACCACCCCTACACAACCATCACGCCTCAGGAGATCAATGGCAAATGGGACCACGT
GGGCAGCTGGTGCCTCGGAGGGACCAAGCTCTGACGGAGGAGCATGCCGACAGCAGCACAATGAGAGG
CTACGCAAGCAGTTTGGAGCCCAGGCCAATGTCATCGGGCCCTGGATCCAGACCAAGATGGAGGAGATCG
GGAGGATCTCCATTGAGATGCATGGGACCCTGGAGGACCAGCTCAGCCACCTGCGGCAGTATGAGAAGAG
CATCGTCAACTACAAGCCAAAGATTGATCAGCTGGAGGGCGACCACCAGCTCATCCAGGAGGCGCTCATC
TTCGACAACAAGCACACCAACTACACCATGGAGCACATCCGTGTGGGCTGGGAGCAGCTGCTCACCACCA
TCGCCAGGACCATCAATGAGGTAGAGAACCAGATCCTGACCCGGGATGCCAAGGGCATCAGCCAGGAGCA
GATGAATGAGTTCGGGGCTCCTTCAACCACTTTGACCGGGATCACTCCGGCACACTGGGTCCCGAGGAG
TTCAAAGCCTGCCTCATCAGCTTGGGTTATGATATTGGCAACGACCCCCAGAAGAAGACAGGCAATGATGG
ACACGGATGATTTCCGCGCTGCCTGATCTCCATGGGTTACAACATGGGAGAAGCAGAATTTGCCCGCAT
CATGAGCATTGTGGACCCCAACCGCCTGGGGTAGTGACATTCCAGGCCTTATTGACTTCATGTCCCGC
GAGACAGCCGACACAGATACAGCAGACCAAGTCAATGGCTTCCCTTCAAGATCCTGGCTGGGACAAGA
ACATTACCATGGACGAGCTGCGCCGAGCTGCCACCCGACCAGGCTGAGTACTGCATCGCGCGGATGGC
CCCCTACACCGGCCCGACTCCGTGCCAGGTGCTCTGGACTACATGTCTTCTCCACGGCGCTGTACGGC
GAGAGTGACCTC

ACGCGTACGCGGCCGCTCGAG - GFP Tag - GTTTAA

Protein Sequence: >RG226259 representing NM_001130004
 Red=Cloning site Green=Tags(s)

MDHYDSQQTNDYMQPEEDWDRDLLLDPaweKQQRKFTTAWCNshLRKAGTQIENIEEDFRDGLKMLLLE
 VISGERLAKPERGKMRVHKISNVNKALDFIASKGVKLVSIGAEEIVDGNVKMTLGMiWTiILRFAIQDIS
 VEETSAKEGLLLWCQRKTAPYKVNVIQNFHISWKDGLGFCALiHRHrPELIDYgKLRKDDPLTNLNTAFD
 VAEKYLDIPKMLDAEDIvGTARpDEKAiMTYVSSfYHAFSGAQKAETAANRICKVLAVNQENEQLMEDYE
 KLASDLLewIRRTIPWLENrVPENTMHAMQqKLEDFRDYRRlHKPPKVQEKcQLEINFNtlQTKLRlSNR
 PAFMPSEGRMvSDINNAwGCLEqVEKGYEEwLLNEiRRlERLDHLAEKFRQKASiHEAWTDGKEAMLRQK
 DYETATLSEIKALLKKHEAFESDLAAHQDRVEQIAAIAQELNELDYDSPSVNARCQKICDQWDLGALT
 QKRREALERTEKLLLETIDQLYLEYAKRAAPFNWMEGAMEDLQDTFIVHTIEEIQGLTTAHEQFKATLPD
 ADKERLAILGIHNEVSKIvQTYHvNMAGTNPYTTITPQeINGKWDHVRQLVPRRDQALTEEHARQqHNER
 LRKQFGAqANvIGPwiQTKMEEIGRiSiEMHGtLEDQLSHLRQYEKSiVNYKPKIDQLEGDHQLIQEALI
 FDNKHTNYTMEHIRvGWELLTTIARTINEVENQILTRDAKGISQEQMNEFRASFNHFDRDhSGTLGPEE
 FKACLISLGYDIGNDPQKKTGMMDTDDFRACLISMGYNMGEAEFARIMSiVDPNRLGVVTFQAFIDFMSR
 ETADTDTADQVMASFKILAGDKNYITMDELRRLEPPDQAEYCIARMAPYTPGDSVPGALDYMSFSTALYG
 ESDL

TRTRPLE - GFP Tag - V

Restriction Sites:

SgfI-MluI

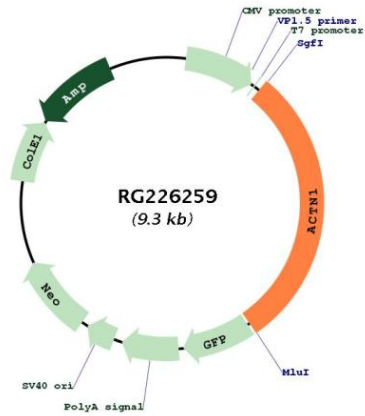
Cloning Scheme:



ACCN: NM_001130004

ORF Size:	2742 bp
OTI Disclaimer:	The molecular sequence of this clone aligns with the gene accession number as a point of reference only. However, individual transcript sequences of the same gene can differ through naturally occurring variations (e.g. polymorphisms), each with its own valid existence. This clone is substantially in agreement with the reference, but a complete review of all prevailing variants is recommended prior to use. More info
OTI Annotation:	This clone was engineered to express the complete ORF with an expression tag. Expression varies depending on the nature of the gene.
Components:	The ORF clone is ion-exchange column purified and shipped in a 2D barcoded Matrix tube containing 10ug of transfection-ready, dried plasmid DNA (reconstitute with 100 ul of water).
Reconstitution Method:	<ol style="list-style-type: none">1. Centrifuge at 5,000xg for 5min.2. Carefully open the tube and add 100ul of sterile water to dissolve the DNA.3. Close the tube and incubate for 10 minutes at room temperature.4. Briefly vortex the tube and then do a quick spin (less than 5000xg) to concentrate the liquid at the bottom.5. Store the suspended plasmid at -20°C. The DNA is stable for at least one year from date of shipping when stored at -20°C.
RefSeq:	NM_001130004.2
RefSeq Size:	3809 bp
RefSeq ORF:	2745 bp
Locus ID:	87
UniProt ID:	P12814
Cytogenetics:	14q22-q24
Protein Families:	Druggable Genome, ES Cell Differentiation/IPS
Protein Pathways:	Adherens junction, Arrhythmogenic right ventricular cardiomyopathy (ARVC), Focal adhesion, Leukocyte transendothelial migration, Regulation of actin cytoskeleton, Systemic lupus erythematosus, Tight junction
Gene Summary:	Alpha actinins belong to the spectrin gene superfamily which represents a diverse group of cytoskeletal proteins, including the alpha and beta spectrins and dystrophins. Alpha actinin is an actin-binding protein with multiple roles in different cell types. In nonmuscle cells, the cytoskeletal isoform is found along microfilament bundles and adherens-type junctions, where it is involved in binding actin to the membrane. In contrast, skeletal, cardiac, and smooth muscle isoforms are localized to the Z-disc and analogous dense bodies, where they help anchor the myofibrillar actin filaments. This gene encodes a nonmuscle, cytoskeletal, alpha actinin isoform and maps to the same site as the structurally similar erythroid beta spectrin gene. Three transcript variants encoding different isoforms have been found for this gene. [provided by RefSeq, Jul 2008]

Product images:



Circular map for RG226259