

Product datasheet for **RG226236**

alpha Actinin (ACTN1) (NM_001130005) Human Tagged ORF Clone

Product data:

Product Type:	Expression Plasmids
Product Name:	alpha Actinin (ACTN1) (NM_001130005) Human Tagged ORF Clone
Tag:	TurboGFP
Symbol:	alpha Actinin
Synonyms:	BDPLT15
Mammalian Cell Selection:	Neomycin
Vector:	pCMV6-AC-GFP (PS100010)
E. coli Selection:	Ampicillin (100 ug/mL)



[View online »](#)

ORF Nucleotide Sequence:

>RG226236 representing NM_001130005
 Red=Cloning site Blue=ORF Green=Tags(s)

TTTTGTAATACGACTCACTATAGGGCGGCCGGGAATTCGTCGACTGGATCCGGTACCGAGGAGATCTGCC
 GCC**CGGATCGCC**

ATGGACCATTATGATTCTCAGCAAACCAACGATTACATGCAGCCAGAAGAGGACTGGGACCGGGACCTGC
 TCCTGGACCCGGCTGGGAGAAGCAGCAGAGAAAAGACATTCACGGCATGGTGTAACCTCCACCTCCGGAA
 GGCGGGGACACAGATCGAGAACATCGAAGAGGACTTCCGGGATGGCCTGAAGCTCATGCTGCTGGAG
 GTCATCTCAGGTGAACGCTTGGCCAAGCCAGAGCGAGGCAAGATGAGAGTGCACAAGATCTCCAACGTCA
 ACAAGGCCCTGGATTTTCATAGCCAGCAAAGGCGTCAAACCTGGTGTCCATCGGAGCCGAAGAAATCGTGGA
 TGGGAATGTGAAGATGACCCTGGGCATGATCTGGACCATCATCTGCGCTTTGCCATCCAGGACATCTCC
 GTGGAAGAGACTTCAGCCAAGGAAGGGTCTCCTGTGGTGTGAGAGAAAGACAGCCCTTACAAAAATG
 TCAACATCCAGAACTTCCACATAAGCTGGAAGGATGGCCTCGGCTTCTGTGCTTTGATCCACCGACACCG
 GCCCGAGCTGATTGACTACGGGAAGCTGCGGAAGGATGATCCACTCACAATCTGAATACGGCTTTTGAC
 GTGGCAGAGAAGTACCTGGACATCCCAAGATGCTGGATGCCGAAGACATCGTTGGAACGCCCGACCGG
 ATGAGAAAAGCCATCATGACTTACGTGTCTAGCTTCTACCACGCCTTCTCTGGAGCCAGAAGCGGAGAC
 AGCAGCCAATCGCATCTGCAAGGTGTTGGCCGTCAACCAGGAGAACGAGCAGCTTATGGAAGACTACGAG
 AAGCTGGCCAGTGTCTGTTGGAGTGGATCCGCCGCACAATCCCGTGGCTGGAGAACCGGGTCCCGGAGA
 ACACCATGCATGCCATGCAACAGAAGCTGGAGGACTTCCGGGACTACCGGCGCTGCACAAGCCGCCAA
 GGTGCAGGAGAAGTGCCAGCTGGAGATCAACTTCAACACGCTGCAGACCAAGCTGCGGCTCAGCAACCGG
 CCTGCCTTCATGCCCTCTGAGGGCAGGATGGTCTCGGACATCAACAATGCCTGGGGCTGCCTGGAGCAGG
 TGAGAGAAGGGCTATGAGGAGTGGTTGCTGAATGAGATCCGGAGGCTGGAGCGACTGGACACCTGGCAGA
 GAAGTTCCGGCAGAAGGCCCTCCATCCACGAGGCCCTGGACTGACGGCAAAGAGGCCATGCTGCGACAGAAG
 GACTATGAGACCGCCACCCTCTCGGAGATCAAGGCCCTGCTCAAGAAGCATGAGGCCCTCGAGAGTGACC
 TGGCTGCCACCAGGACCGTGTGGAGCAGATTGCCCCATCGCACAGGAGCTCAATGAGCTGGACTATTA
 TGACTACCCAGTGTCAACGCCCTTGCACAAAAGATCTGTGACCAGTGGGACAATCTGGGGGCCCTAACT
 CAGAAGCGAAGGGGAGCTCTGGAGCGGACCGAGAAAAGCTGCTGGAGACCATTGACCAGCTGTACTTGGAGT
 ATGCCAAGCGGGCTGCACCCTTCAACAAGTGGATGGAGGGGGCCATGGAGGACCTGCAGGACACCTTCAT
 TGTGCACACCATTGAGGAGATCCAGGGACTGACCACAGCCATGAGCAGTTCAAGGCCACCCTCCCTGAT
 GCCGACAAGGAGCGCCTGGCCATCCTGGGCATCCACAATGAGGTGTCCAAGATTGTCAGACCTACCACG
 TCAATATGGCGGGCACCAACCCCTACACAACCATCACGCCTCAGGAGATCAATGGCAAATGGGACCACGT
 GCGGCAGCTGGTGCCTCGGAGGGACCAAGCTCTGACGGAGGAGCATGCCGACAGCAGCACAATGAGAGG
 CTACGCAAGCAGTTTGGAGCCCAGGCAATGTCATCGGGCCCTGGATCCAGACCAAGATGGAGGAGATCG
 GGAGGATCTCCATTGAGATGCATGGGACCCTGGAGGACCAGCTCAGCCACCTGCGGCAGTATGAGAAGAG
 CATCGTCAACTACAAGCCAAAGATTGATCAGCTGGAGGGCGACCACCAGCTCATCCAGGAGGCGCTCATC
 TTCGACAACAAGCACACCAACTACACCATGGAGCACATCCGTGTGGGCTGGGAGCAGCTGCTCACCACCA
 TCGCCAGGACCATCAATGAGGTAGAGAACCAGATCCTGACCCGGATGCCAAGGGCATCAGCCAGGAGCA
 GATGAATGAGTTCGGGGCTCCTTCAACCCTTTGACCGGAAGAAGACAGGCATGATGGACACGGATGAT
 TTCCGCGCCTGCCTGATCTCCATGGGTTACAACATGGGAGAAGCAGAATTTGCCCGCATCATGAGCATTG
 TGGACCCCAACCGCTGGGGTGTGACATTCCAGGCCTTATTGACTTCATGTCCCAGGAGACAGCCGA
 CACAGATACAGCAGACCAAGTCAATGGCTTCTTCAAGATCCTGGCTGGGACAAGAAGTACATTACCATG
 GACGAGCTGCGCCGAGCTGCCACCCGACCAGGCTGAGTACTGCATCGCGCGGATGGCCCCCTACACCG
 GCCCGACTCCGTGCCAGGTGCTCTGGACTACATGTCTTCTCCACGGCGCTGTACGGCGAGAGTGACCT
 C

ACGCGTACGCGGCCGCTCGAG - GFP Tag - GTTTAA

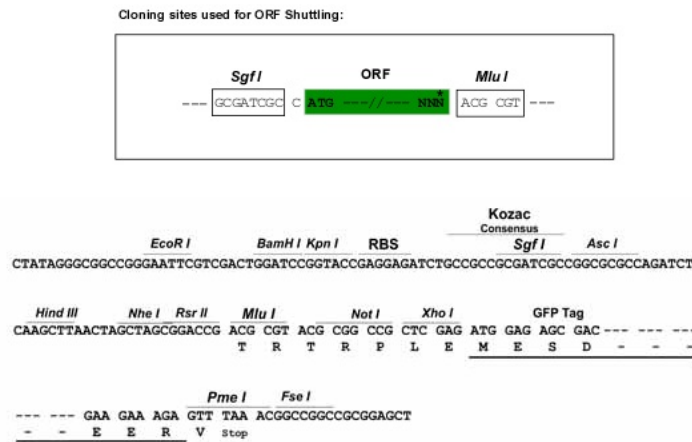
Protein Sequence: >RG226236 representing NM_001130005
 Red=Cloning site Green=Tags(s)

MDHYDSQQTNDYMQPEEDWDRDLLLDPaweKQQRKFTTAWCNshLRKAGTQIENIEEDFRDGLKMLLLE
 VISGERLAKPERGKMRVHKISNVNKALDFIASKGVKLVSIGAEIIVDGNVKMTLGMiWTiILRFaiQDIS
 VEETSAKEGLLLWCQRKTAPYKVNVIQNFHISWKDGLGFCALiHRHrPELIDYgKLRKDDPLTNLNTAFD
 VAEKYLdIPKMLDAEDiVGTARpDEKAiMtyVSSfyHAFSGAQKAETAANRiCKVLAVNQENEQLMEDYE
 KLASDlLEWIRRTiPwLENrVPENTMHAMQqKLEDFRDYRRlHKPPKVQEKcQLEiNFNTLQTKLRlSNR
 PAFMPSEGRMVSdINNAwGCLEQVEKGYEEwLLNEiRRlERLDHLAEKFRQKASiHEAWTDGKEAMLRQK
 DYETATLSEiKALLKKHEAFESDLAAHQDRVEQIAAIAQELNELDYDSPSVNARCQKiCDQWDNLGALT
 QKRREALERTEKlLETIDQLYLEYAKRAAPFNWMEGAMEDLQDTFiVHTIEEiQGLTTAHEQFKATLPD
 ADKERLAILGIHNEVSKIvQTYHVNMAGTNPYTTITPQeINGKWDHVRQLVPRRDQALTEEHarQQHNER
 LRKQFGAQANViGPWiqTKMEEiGRiSiEMHGtLEDQLSHLRQYEKSiVNYKPKIDQLEGDHQLIQEALi
 FDNKHTNYTMEHirVgWEQLLTTiARTiNEVENQILTRDAKGISQEQMNEFRASFNHFDRKKTGMMDTDD
 FRACLISMGYNMGAEAFARiMSiVDPNRLGVVTFQAFIDFMSRETADTDTADQVMASFKiLAGDKNYITM
 DELRRELPPDQAEYCIARMAPYTPDsvPGALDYMSFSTALYGESDL

TRTRPLE - GFP Tag - V

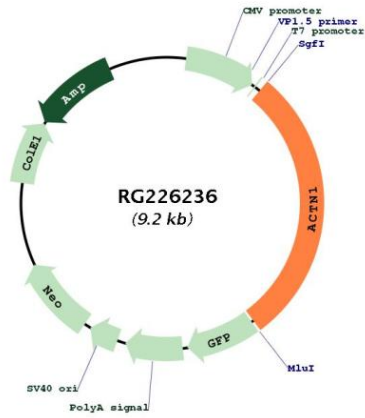
Restriction Sites: SgfI-MluI

Cloning Scheme:



ACCN:	NM_001130005
ORF Size:	2661 bp
OTI Disclaimer:	The molecular sequence of this clone aligns with the gene accession number as a point of reference only. However, individual transcript sequences of the same gene can differ through naturally occurring variations (e.g. polymorphisms), each with its own valid existence. This clone is substantially in agreement with the reference, but a complete review of all prevailing variants is recommended prior to use. More info
OTI Annotation:	This clone was engineered to express the complete ORF with an expression tag. Expression varies depending on the nature of the gene.
Components:	The ORF clone is ion-exchange column purified and shipped in a 2D barcoded Matrix tube containing 10ug of transfection-ready, dried plasmid DNA (reconstitute with 100 ul of water).
Reconstitution Method:	<ol style="list-style-type: none">1. Centrifuge at 5,000xg for 5min.2. Carefully open the tube and add 100ul of sterile water to dissolve the DNA.3. Close the tube and incubate for 10 minutes at room temperature.4. Briefly vortex the tube and then do a quick spin (less than 5000xg) to concentrate the liquid at the bottom.5. Store the suspended plasmid at -20°C. The DNA is stable for at least one year from date of shipping when stored at -20°C.
RefSeq:	NM_001130005.2
RefSeq Size:	3728 bp
RefSeq ORF:	2664 bp
Locus ID:	87
UniProt ID:	P12814
Cytogenetics:	14q22-q24
Protein Families:	Druggable Genome, ES Cell Differentiation/IPS
Protein Pathways:	Adherens junction, Arrhythmogenic right ventricular cardiomyopathy (ARVC), Focal adhesion, Leukocyte transendothelial migration, Regulation of actin cytoskeleton, Systemic lupus erythematosus, Tight junction
Gene Summary:	Alpha actinins belong to the spectrin gene superfamily which represents a diverse group of cytoskeletal proteins, including the alpha and beta spectrins and dystrophins. Alpha actinin is an actin-binding protein with multiple roles in different cell types. In nonmuscle cells, the cytoskeletal isoform is found along microfilament bundles and adherens-type junctions, where it is involved in binding actin to the membrane. In contrast, skeletal, cardiac, and smooth muscle isoforms are localized to the Z-disc and analogous dense bodies, where they help anchor the myofibrillar actin filaments. This gene encodes a nonmuscle, cytoskeletal, alpha actinin isoform and maps to the same site as the structurally similar erythroid beta spectrin gene. Three transcript variants encoding different isoforms have been found for this gene. [provided by RefSeq, Jul 2008]

Product images:



Circular map for RG226236