

## Product datasheet for **RG226215**

### MRP4 (ABCC4) (NM\_001105515) Human Tagged ORF Clone

#### Product data:

Product Type:	Expression Plasmids
Product Name:	MRP4 (ABCC4) (NM_001105515) Human Tagged ORF Clone
Tag:	TurboGFP
Symbol:	ABCC4
Synonyms:	MOAT-B; MOATB; MRP4
Mammalian Cell Selection:	Neomycin
Vector:	pCMV6-AC-GFP (PS100010)
E. coli Selection:	Ampicillin (100 ug/mL)



[View online »](#)

**ORF Nucleotide Sequence:**

>RG226215 representing NM\_001105515  
 Red=Cloning site Blue=ORF Green=Tags(s)

TTTTGTAATACGACTCACTATAGGGCGGCCGGGAATTCGTCGACTGGATCCGGTACCGAGGAGATCTGCC  
 GCC**CGCATCGCC**

ATGCTGCCCGTGTACCAGGAGGTGAAGCCCAACCCGCTGCAGGACGCGAACCTCTGCTCACGCGTGTCT  
 TCTGGTGGCTCAATCCCTTGTAAAATTGGCCATAAACGGAGATTAGAGGAAGATGATATGTATTCAGT  
 GCTGCCAGAAGACCGCTCACAGCACCTTGAGAGGAGTTGCAAGGGTTCTGGGATAAAGAAGTTTAAAGA  
 GCTGAGAATGACGCACAGAAGCCTTCTTTAAACAAGAGCAATCATAAAGTGTACTGGAAATCTTATTTAG  
 TTTTGGGAATTTTACGTTAATTGAGGAAAGTGCCAAAGTAATCCAGCCCATATTTTGGGAAAAATTAT  
 TAATTATTTTAAAAATTATGATCCCATGGATTCTGTGGCTTTGAACACAGCGTACGCCTATGCCACGGTG  
 CTGACTTTTTGCACGCTCATTGGCTACTGCATCACTTATTTTTATCACGTTTCAGTGTGCTGGGA  
 TGAGGTTACGAGTAGCCATGTGCCATATGATTTATCGAAAGCACTTCGTCTTAGTAACATGGCCATGGG  
 GAAGACAACCACAGGCCAGATAGTCAATCTGCTGTCCAATGATGTGAACAAGTTTGTATCAGTGTACAGTG  
 TTCTTACACTTCCTGTGGGCAGGACCCTGCAGGCGATTGCAGTACTGCCCTACTCTGGATGGAGATAG  
 GAATATCGTGCCTTGTGGGATGGCAGTCTAATCATTCTCTGCCCTTGCAAAGCTGTTTTGGGAAGTT  
 GTTCTCATCACTGAGGAGTAAAAGTCAACTTTACGGATGCCAGGATCAGGACCATGAATGAAGTTATA  
 ACTGGTATAAGGATAATAAAAAATGTACGCCTGGGAAAAGTCATTTTCAAATCTTATTACCAATTTGAGAA  
 AGAAGGAGATTTCCAAGATTCTGAGAAGTTCTGCCTCAGAGGGATGAATTTGGCTTCATTTTTCAGTGC  
 AAGCAAAATCATCGTGTGTGACCTTACCACCTACGTGCTCCTCGGCAGTGTGATCACAGCCAGCCGC  
 GTGTTTCGTGGCAGTGACGCTGTATGGGGCTGTGGGCTGACGGTTACCCTCTTCTCCCTCAGCCATTG  
 AGAGGTTGTGACAGGCAATCGTCAGCATCCGAAGAATCCAGACCTTTTGTCTACTGTAGATGAGATACCA  
 GCGCAACCGTCAGCTGCCGTGAGTGGTAAAAAGATGGTGCATGTGCAGGATTTTACTGCTTTTTGGGAT  
 AAGGCATCAGAGACCCCAACTCTACAAGCCCTTCTTTACTGTGACACCTGGCGAATTGTAGCTGTGG  
 TCGGCCCGTGGGAGCAGGGAAGTCATCACTGTTAAGTGCCTGCTCGGGGAATTGGCCCAAGTCACGG  
 GCTGGTACGCGTGCATGGAAGAATTGCCTATGTGTCTCAGCAGCCCTGGGTGTTCTCGGGAACCTGAGG  
 AGTAATATTTTATTTGGGAAGAAATACGAAAAGGAACGATATGAAAAAGTCATAAAGGCTTGTGCTCTGA  
 AAAAGGATTTACAGCTGTGGAGGATGGTGTCTGACTGTGATAGGAGATCGGGAAACCACGCTGAGTGG  
 AGGGCAGAAAGCACGGGTAACCTTGAAGAGCAGTGTATCAAGATGCTGACATCTATCTCTGGACGAT  
 CCTCTCAGTGCAGTAGATGCGGAAGTTAGCAGACACTTGTTCGAACTGTGTATTTGTCAAATTTTGCATG  
 AGAAGATCACAATTTTAGTGACTCATCAGTTGCAGTACCTCAAAGCTGCAAGTCAGATTCTGATATTGAA  
 AGATGGTAAAAATGGTGCAGAAGGGGACTTACACTGAGTTCCTAAAATCTGGTATAGATTTTGGCTCCCTT  
 TTAAGAAGGATAATGAGGAAAGTGAACAACCTCCAGTTCAGGAACTCCACACTAAGGAATCGTACCT  
 TCTCAGAGTCTTCGGTTTGGTCTCAACAATCTTCTAGACCCTCCTTGAAGATGGTGTCTCTGGAGAGCCA  
 AGATACAGAGAATGTCCCAGTTACACTATCAGAGGAGAACCCTTCTGAAGGAAAAGTTGGTTTTTCAGGCC  
 TATAAGAATTACTTCAGAGCTGGTGTCACTGGATTGTCTTCAATTTCTTATTCTCCTAAACACTGCAG  
 CTCAGGTTGCCTATGTGCTTCAAGATTGGTGGCTTTCATACTGGGCAACAACAAGATGCTAAATGT  
 CACTGTAATGGAGGAGGAAATGTAACCGAGAAGCTAGATCTTAACTGGTACTTAGGAATTTATTCAGGT  
 TTAAGTGTAGCTACCGTTCTTTTGGCATAGCAAGATCTCTATTGGTATTCTACGTCCTTGTAACTCTT  
 CACAAACTTTGCACAACAAAATGTTTGTGAGTCAATCTGAAAGCTCCGGTATTATTCTTTGATAGAAATCC  
 AATAGGAAGAATTTAAATCGTTTCTCCAAGACATTGGACACTTGGATGATTTGCTGCCCTGACGTTT  
 TTAGATTTTCATCCAGAGATGGGATCTCGCTGTGTGCTGGCTGGTCTCAAACCTCC

AGCGGACCGACGCGTACGCGGCCGCTCGAG - GFP Tag - GTTTAA

Protein Sequence: >RG226215 representing NM\_001105515  
Red=Cloning site Green=Tags(s)

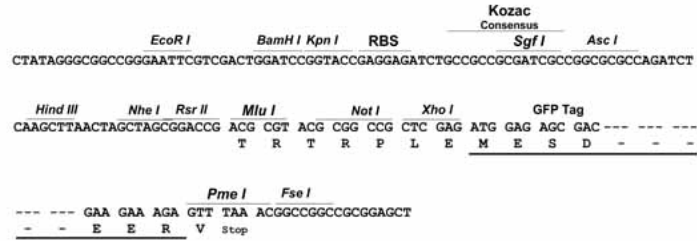
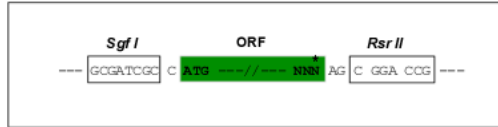
MLPVYQEVKPNPLQDANLCSRFFFWLNPLFKIGHKRRLEEDDMYSVLPEDRSQHLGEELQGFWDKEVLR  
AENDAQKPSLTRAIIKCYWKSYLVLGIFTLIEESAKVIQPIFLGKIINYFENYDPMDSVALNTAYAYATV  
LTFCTLILAILHHLFYFHVQCAGMRLRVAMCHMIYRKALRLSNMAMGKTTTGQIVNLLSNDVNFQDQVTV  
FLHFLWAGPLQAIAVTALLWMEIGISCLAGMAVLIILLPLQSCFGKLFSSLRSKTATFTDARITMNEVI  
TGIRIIKMYAWEKSFSNLITNLRKKEISKILRSSCLRGMNLASFFSASKIIVFVFTTTYVLLGSVITASR  
VFVAVTLYGAVRLTVTLFFPSAIERVSEAIVSIRRIQTFLLLDEISQRNRQLPSDGKMMVHVQDFTAFWD  
KASETPTLQGLSFTVRPGELLAVVGPVGAGKSSLLSAVLGELAPSHGLSVHGRIAYVSQQPWVFSGLTR  
SNILFGKKYEKERYEKVIKACALKKDLQLLEDGDLTVIGDRGTTLSGGQKARVNLARAVYQDADIYLLDD  
PLSAVDAEVSRLHFELCICQILHEKITILVTHQLQYLKAASQILILKDGKMQKGTYTEFLKSGIDFGSL  
LKKDNEESEQPPVPGTPTLRNRTFSESSVWSQQSSRPSLKDGALESQDTENVPVTLSEENRSEKGVGFA  
YKNYFRAGAHWIVFIFLILLNTAAQVAYVLQDWLWLSYWANKQSMLNVTVNGGGNVTEKLDLNLWYLGIIYS  
LTVATVLFGIARSLLVFYVLVNSSQTLHNKMFESILKAPVLFDRNPIGRILNRFKIDIGHLDDLPLTF  
LDFIQRWDLAVLSWLVSNS

SGPTRRRLE - GFP Tag - V

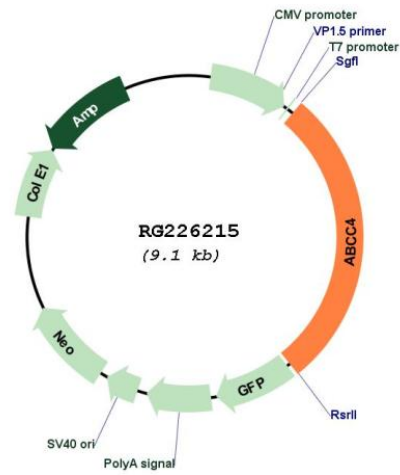
Restriction Sites: Sgfl-RsrII

Cloning Scheme:

Cloning sites used for ORF Shuttling:



Plasmid Map:



<b>ACCN:</b>	NM_001105515
<b>ORF Size:</b>	2577 bp
<b>OTI Disclaimer:</b>	The molecular sequence of this clone aligns with the gene accession number as a point of reference only. However, individual transcript sequences of the same gene can differ through naturally occurring variations (e.g. polymorphisms), each with its own valid existence. This clone is substantially in agreement with the reference, but a complete review of all prevailing variants is recommended prior to use. <a href="#">More info</a>
<b>OTI Annotation:</b>	This clone was engineered to express the complete ORF with an expression tag. Expression varies depending on the nature of the gene.
<b>Components:</b>	The ORF clone is ion-exchange column purified and shipped in a 2D barcoded Matrix tube containing 10ug of transfection-ready, dried plasmid DNA (reconstitute with 100 ul of water).
<b>Reconstitution Method:</b>	<ol style="list-style-type: none"><li>1. Centrifuge at 5,000xg for 5min.</li><li>2. Carefully open the tube and add 100ul of sterile water to dissolve the DNA.</li><li>3. Close the tube and incubate for 10 minutes at room temperature.</li><li>4. Briefly vortex the tube and then do a quick spin (less than 5000xg) to concentrate the liquid at the bottom.</li><li>5. Store the suspended plasmid at -20°C. The DNA is stable for at least one year from date of shipping when stored at -20°C.</li></ol>
<b>RefSeq:</b>	<a href="#">NM_001105515.3</a>
<b>RefSeq Size:</b>	3077 bp
<b>RefSeq ORF:</b>	2580 bp
<b>Locus ID:</b>	10257
<b>UniProt ID:</b>	<a href="#">O15439</a>
<b>Cytogenetics:</b>	13q32.1
<b>Protein Families:</b>	Druggable Genome, Ion Channels: Other, Transmembrane
<b>Protein Pathways:</b>	ABC transporters
<b>Gene Summary:</b>	The protein encoded by this gene is a member of the superfamily of ATP-binding cassette (ABC) transporters. ABC proteins transport various molecules across extra- and intra-cellular membranes. ABC genes are divided into seven distinct subfamilies (ABC1, MDR/TAP, MRP, ALD, OABP, GCN20, White). This protein is a member of the MRP subfamily which is involved in multi-drug resistance. This family member plays a role in cellular detoxification as a pump for its substrate, organic anions. It may also function in prostaglandin-mediated cAMP signaling in ciliogenesis. Alternative splicing of this gene results in multiple transcript variants. [provided by RefSeq, Sep 2014]