

Product datasheet for **RG226214**

LRRC8D (NM_001134479) Human Tagged ORF Clone

Product data:

Product Type:	Expression Plasmids
Product Name:	LRRC8D (NM_001134479) Human Tagged ORF Clone
Tag:	TurboGFP
Symbol:	LRRC8D
Synonyms:	LRRC5
Mammalian Cell Selection:	Neomycin
Vector:	pCMV6-AC-GFP (PS100010)
E. coli Selection:	Ampicillin (100 ug/mL)



[View online »](#)

ORF Nucleotide Sequence:

>RG226214 representing NM_001134479
 Red=Cloning site Blue=ORF Green=Tags(s)

TTTTGTAATACGACTCACTATAGGGCGGCCGGAATTCGTGACTGGATCCGGTACCGAGGAGATCTGCC
 GCC**CGGATCGCC**

ATGTTTACCCTTGCGGAAGTTGCATCACTTAATGACATTCAGCCAACCTACCGAATCCTGAAACCATGGT
 GGGATGTGTTTATGGATTACCTAGCTGTTGTTATGTTAATGGTAGCCATCTTTCAGGAACCATGCAACT
 TACCAAAGATCAGGTGGTCTGTTTGCCAGTATTGCCATCTCCTGTAAATCAAAGGCACATACACCACCA
 GGAAATGCCGAGGTCACCACCAACATCCCAAAGATGGAAGCAGCCACCAACCAAGACCAAGATGGGCGGA
 CAACAAACGACATTTCTTTGGGACATCTGCTGTGACACCTGACATACCTCTCAGAGCCACATATCTCG
 CACAGATTTGCACTTCCAAATCAGGAGGCAAAGAAAGAGAAGAAAGATCCAACAGGTCGAAAAACAAAC
 TTGGATTTTCAGCAATATGTATTTAATCAAATGTGTTACCATCTGGCCCTCCGTGGTATTCTAAGT
 ACTTTCCATACCTAGCTCTTATACATACTATTATCTCATGGTCAGTAGCAACTTTTGGTCAAATATCC
 CAAAACATGCTCAAAGTAGAACATTTTGTTCATATTAGGAAAGTGCTTTGAATCCCCTTGGACGACA
 AAAGCGTTGTCTGAGACAGCATGCGAAGACTCAGAGGAAAACAAGCAGAGAATAACAGGTGCCCAGACTC
 TACCAAAGCATGTTTCTACCAGCAGTGATGAAGGGAGCCCAAGTCCAGTACACCAATGATCAATAAAAC
 TGGCTTTAAATTTTACGCTGAGAAGCCTGTGATTGAAGTCCCAGCATGACAATCCTGGATAAAAAGGAT
 GGAGAGCAGGCCAAAGCCCTGTTTGAGAAAGTGAGGAAGTCCGTGCCATGTGGAAGATAGTGACTTGA
 TCTATAAACTCTATGTGGTCCAAACAGTTATCAAACAGCCAAGTTCATTTTTATTCTCTGCTATACAGC
 GAACCTTTGTCAACGCAATCAGCTTTGAACACGTCTGCAAGCCCAAAGTTGAGCATCTGATTGGTTATGAG
 GTATTTGAGTGCACCCACAATATGGCTTACATGTTGAAAAGCTTCTCATCAGTTACATATCCATTATTT
 GTGTTTATGGCTTTATCGCCTCTACACTCTCTCTGTTATTTCAGGATACCTTTGAAGGAATATCTTTT
 CGAAAAAGTCAGAGAAGAGAGCAGTTTTAGTGACATTCCAGATGTCAAAAACGATTTTGGCTTCCTTCTT
 CACATGGTAGACCAGTATGACCAGCTATATTCCAAGCGTTTTGGTGTGTTCTTGCAGAAGTTAGTGAAA
 AATAAACTAGGGAAATTAGTTTGAACCATGAGTGGACATTTGAAAACTCAGGCAGCACATTTACAGCAA
 CGCCCAGGACAAGCAGGAGTTGCATCTGTTTATGCTGTGCGGGGTGCCGATGCTGTCTTTGACCTCACA
 GACCTGGATGTGCTAAAGCTTGAACATAATCCAGAAGCTAAAATTCCTGCTAAGATTTCTCAAATGACTA
 ACCTCAAAGAGCTCCACCTCTGCCACTGCCCTGCAAAAGTTGAACAGACTGCTTTTAGCTTTCTTCGCGA
 TCACTTGAGATGCCTTACGTGAAGTTCAGTGTGGCTGAAATTCCTGCCTGGGTGATTTGCTCAAA
 AACCTTCGAGAGTTGACTTAATAGGCAATTTGAACTCTGAAAACAATAAGATGATAGGACTTGAATCTC
 TCCGAGAGTTGCGGCACCTTAAGATTCTCCACGTGAAGAGCAATTTGACCAAAGTTCCCTCCAACATTAC
 AGATGTGGCTCCACATCTTACAAAGTTAGTCATTACATAATGACGGCACTAAACTCTTGGTACTGAACAGC
 CTTAAGAAAATGATGAATGTCGCTGAGCTGGAACCTCCAGAAGTGTGAGCTAGAGAGAATCCACATGCTA
 TTTTCAGCCTCTTAATTTACAGGAACTGGATTTAAAGTCCAATAACATTCGCACAATTGAGGAAATCAT
 CAGTTTCCAGCATTTAAAACGACTGACTTGTTAAAATATGGCATAACAAAATTTGTTACTATTCCTCCC
 TCTATTACCCATGTCAAAAACCTGGAGTCACTTTATTTCTTACAACAAGCTCGAATCCTTACCAGTGG
 CAGTATTTAGTTTACAGAACTCAGATGCTTAGATGTGAGCTACAACAACATTTCAATGATTCGAATAGA
 AATAGGATTTGCTTCAGAACCTGCAGCAATTTGCATATCACTGGGAACAAAGTGGACATTTGCCAAAACA
 TTGTTTAAATGCATAAAGTTGAGGACTTTGAATCTGGGACAGAAGTGCATCACCTCACTCCAGAGAAAG
 TTGGTCAGCTCTCCAGCTCACTCAGCTGGAGCTGAAGGGGAACTGCTTGGACCGCTGCCAGCCAGCT
 GGGCCAGTGTGCGATGCTCAAGAAAAGCGGGCTTGTGTTGGAAGATCACCTTTTTGATACCTGCCACTC
 GAAGTCAAAGAGGCATTGAATCAAGACATAAATATTCCTTTGCAAAATGGGATT

ACGGTACGCGGCCGCTCGAG - GFP Tag - GTTTAA

Protein Sequence: >RG226214 representing NM_001134479
 Red=Cloning site Green=Tags(s)

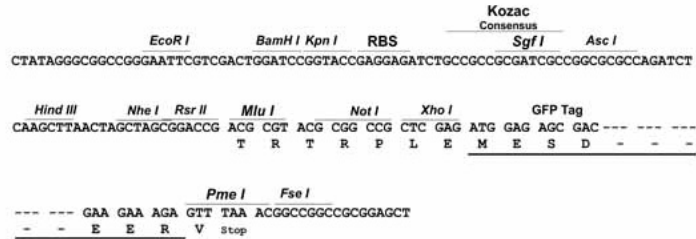
```
MFTLAEVASLNDIQPTYRILKPWWDFMDYLAVVMLMVAIFAGTMQLTKDQVVCLPVLPSVNSKAHTPP
GNAEVTNIPKMEAATNQDQDGRITNDISFGTSAVTPDIPLRATYPRDFALPNQEAKKEKDPGRKTN
LDFQYYVFINQMCYHLALPWYSKYFPYLALIHITILMVSSNFWFKYPKTCSKVEHFVSILGKCFESPWTT
KALSETACEDSEENKQRITGAQTLPKHVSTSSDEGSPSASTPMINKTGFKFSAEKPVIEVPSMTILDKKD
GEQAKALFEKVRKFRAHVEDSDLIYKLYVQTVIKTAKFIFILCYTANFVNAISFEHVCKPKVEHLIGYE
VFECTHNMAYMLKLLISYISIIICVYGFICLYTLFWLFRIPLKEYSFEKVREESSFSDIPDVKNDFALL
HMVDQYDQLYSKRFGVFLSEVSENKLEISLNHEWTFEKLQHISRNAQDKQELHLFMLS GVPDAVFDLT
DL DVLKLEL IPEAKIPAKISQMTNLQELHLCHCPAKVEQTAFSFLRDHLRCLHVKFTDVAEIPAWVYLLK
NLRELYLIGNLSENKMI GLESLREL RHLKILHVKS NLTKVPSNITDVAPHLTKLVIHNDGTKLLVLS
LKKMMNVAEELQNC ELERIPHAIFSLSNLQELDLKSNNIRTIEEIIISFQHLKRLTCLKLWHNKIVTIPP
SITHVKNLESLYFSNNKLESLPVAVFSLQKLRCLDVSYNNISMIPIEIGLLQNLQHLHITGNKVDILPKQ
LFKCIKLRTLNLGQNCITSLPEKVGQLSQTQLELKGNC LDRLPAQLGQCRMLKKSGLVVEDHLFDLPL
EVKEALNQDINIPFANGI
```

TRTRPLE - GFP Tag - V

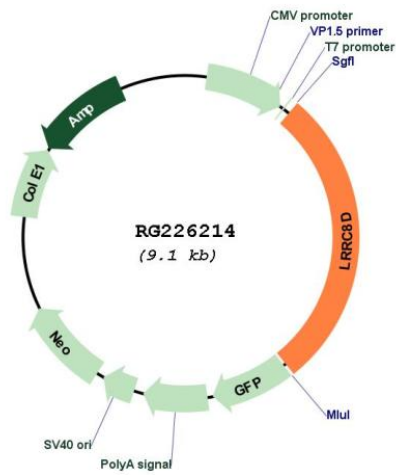
Restriction Sites: Sgfl-MluI

Cloning Scheme:

Cloning sites used for ORF Shutting:



Plasmid Map:



ACCN:	NM_001134479
ORF Size:	2574 bp
OTI Disclaimer:	The molecular sequence of this clone aligns with the gene accession number as a point of reference only. However, individual transcript sequences of the same gene can differ through naturally occurring variations (e.g. polymorphisms), each with its own valid existence. This clone is substantially in agreement with the reference, but a complete review of all prevailing variants is recommended prior to use. More info
OTI Annotation:	This clone was engineered to express the complete ORF with an expression tag. Expression varies depending on the nature of the gene.
Components:	The ORF clone is ion-exchange column purified and shipped in a 2D barcoded Matrix tube containing 10ug of transfection-ready, dried plasmid DNA (reconstitute with 100 ul of water).
Reconstitution Method:	<ol style="list-style-type: none">1. Centrifuge at 5,000xg for 5min.2. Carefully open the tube and add 100ul of sterile water to dissolve the DNA.3. Close the tube and incubate for 10 minutes at room temperature.4. Briefly vortex the tube and then do a quick spin (less than 5000xg) to concentrate the liquid at the bottom.5. Store the suspended plasmid at -20°C. The DNA is stable for at least one year from date of shipping when stored at -20°C.
RefSeq:	NM_001134479.2
RefSeq Size:	3795 bp
RefSeq ORF:	2577 bp
Locus ID:	55144
UniProt ID:	Q7L1W4
Cytogenetics:	1p22.2
Protein Families:	Transmembrane
Gene Summary:	Non-essential component of the volume-regulated anion channel (VRAC, also named VSOAC channel), an anion channel required to maintain a constant cell volume in response to extracellular or intracellular osmotic changes (PubMed:24790029, PubMed:26530471, PubMed:26824658, PubMed:28193731). The VRAC channel conducts iodide better than chloride and can also conduct organic osmolytes like taurine (PubMed:24790029, PubMed:26824658, PubMed:28193731). Plays a redundant role in the efflux of amino acids, such as aspartate, in response to osmotic stress (PubMed:28193731). Channel activity requires LRRC8A plus at least one other family member (LRRC8B, LRRC8C, LRRC8D or LRRC8E); channel characteristics depend on the precise subunit composition (PubMed:24782309, PubMed:24790029, PubMed:26824658, PubMed:28193731). LRRC8A and LRRC8D are required for the uptake of the drug cisplatin (PubMed:26530471). Mediates the import of the antibiotic blasticidin-S into the cell (PubMed:24782309).[UniProtKB/Swiss-Prot Function]