

Product datasheet for **RG226212**

FSTL5 (NM_001128427) Human Tagged ORF Clone

Product data:

Product Type:	Expression Plasmids
Product Name:	FSTL5 (NM_001128427) Human Tagged ORF Clone
Tag:	TurboGFP
Symbol:	FSTL5
Mammalian Cell Selection:	Neomycin
Vector:	pCMV6-AC-GFP (PS100010)
E. coli Selection:	Ampicillin (100 ug/mL)



[View online »](#)

**ORF Nucleotide
Sequence:**

>RG226212 representing NM_001128427
 Red=Cloning site Blue=ORF Green=Tags(s)

TTTTGTAATACGACTCACTATAGGGCGGCCGGAATTCGTCGACTGGATCCGGTACCGAGGAGATCTGCC
 GCC**CGATCGCC**

ATGTTTAAGTGCCTGGTCACTTGTCTTGGTCTCGGATTCATTTTTCTGGAGTCGGAAGGAAGGCCAACCA
 AAGAAGGAGGATATGGCCTTAAATCCTATCAGCCTCTAATGAGATTGCGACATAAGGAAAAAATCAAGA
 AAGTTCAAGAGTCAAAGATTTATGATTAGGATGGCCCTTTGGATCTTGTGAAAAAATAGTACTGTGGT
 TTGGGAAGACACTGTGTTACCAGCAGAGAGACAGGGCAAGCAGAAATGTCCTGTATGGACCTTTGCAAAAC
 GTCACTACAAACCTGTGTGGATCTGACGGAGAATTCTATGAAAACCACTGTGAAGTGCACAGAGCTGC
 TTGCCTGAAAAACAAAAGATTACCATTGTTTACAATGAAGACTGCTTCTTTAAAGGAGATAAGTGAAG
 ACTACTGAATACAGCAAGATGAAAAATATGCTATTAGATTTACAAAATCAAAAATATATTATGCAAGAAA
 ATGAAAAATCCTAATGGCGACGACATATCTCGGAAGAAGCTATTGGTGGATCAAATGTTTAAATATTTTGA
 TGCAGACAGTAATGGACTTGTAGATATTAATGAACTAACTCAGGTGATAAAACAGGAAGAACTTGGCAAG
 GATCTCTTTGATTGTACTTTGTATGTTCTATTGAAATATGATGATTTTAAATGCTGACAAGCACCTGGCTC
 TTGAAGAATTTTATAGAGCATTCCAAGTATCCAGTTGAGTCTGCCAGAAGATCAGAAAATAGCATCAC
 TGCAGCAACTGTGGGACAAAAGTCTGTTCTGAGCTGTGCCATTCAAGGAACCCCTGAGACCTCCCATTATC
 TGGAAAAGGAACAATATTATTCTAAATAATTTAGATTTGGAAGACATCAATGACTTTGGAGATGATGGGT
 CCTTGTATATTACTAAGTTACCACAACCTACGTTGGCAATTACACCTGCATGCAGATGGCTATGAACA
 AGTCTATCAGACTCACATCTTCCAAGTGAATGTTCTCCAGTCATCCGGGTGTATCCAGAGAGTCAGGCT
 AGAGACCTGGGGTAACGCCAGTCTTAGGTGCCATGCAGAGGGCATACCAAAGCCTCAGCTTGGCTGGT
 TGAAGAATGGAATTTGATATTACACCAAAGCTTTCCAAACAACCTCAGCTTCAAGCAAAATGGCAGTGGT
 TCACATAAGCAATGTGCGCTATGAAGATACTGGAGCATACACTTGTATCGCAAAGAATGAAGCAGGAGTG
 GATGAAGACATCTCTTCTTTTTTGTGGAAAGACTGCTAGAAAAGACCCTAGCTAACATATTATGGAGAG
 AAGAAGTCTGGGAATTTGGGAACATGTTCTATGTTTTTATGAAGATGGAATCAAAGTGATAACAACCCAT
 AGAATGTGAATTTAGAGGCACATTAAGCCTAGTAAAAGCTCCTTGGATTTAGGATGAAGTCTGTCCC
 AAAGCTGAGGGAGATGAAGTTCAGAGGTGTGTGGGCATCAGCTGTTAATGTCAAAGACAAGTTTCATTT
 ATGTTGCACAGCCAACCTTTGGACAGAGTCTTATTGTTGATGTGCAGTCCAAAAAGTTGTTTCCAGGAGT
 GAGCACAGACCCTGTCCCAGTTAAATTACACTATGACAAATCACATGATCAGGTCTGGGTGCTAAGCTGG
 GGTACCTTGGAGAAGACATCACCAACACTACAGGTAATTACCCTGGCCAGTGGGAATGTGCCTCACCACA
 CGATCCACACCCAACAGTGGGAAAGCAATTTGACAGAGTGGATGATTTTTTTCATTTCCACACACAACACT
 CATTATCACCCATATGAGGTTTGGATTTATTCTTCATAAAGATGAAGCTGCACTACAAAAAATGATCTT
 GAAACCATGTCATACATCAAGACAATTAACCTGAAGGACTATAAGTGCCTTCTCAGTCATTGGCATATA
 CACACTTTGGGAGGCTACTACTTCATTGGCTGCAACCTGACAGCACCGGAGCAGTTTCCCCACAGGTCAT
 GGTGGACGGTGAAGTACTGACTCAGTCATTGGGTTCAATAGTGATGTGACGGGCACTCCATATGTCTCTCCA
 GATGGCCACTACCTTGTGAGCATTAAATGATGTGAAAGGCTTGTAAAGGTTTCAAGTACATTACCATCAGAG
 GAGAAAACAGGAGGCTTTTGTATTTACACAAATCTGCACATATCTGATCTGGCATTCAACCATCCTT
 TACTGAAGCCCACCAATATAACATCTACGGTAGTTCAAGCACACAACTGATGTGCTCTTTGTGGAGCTC
 TCTTCTGGGAAGTCAAGATGATAAAGAGTCTCAAGGAACCACTCAAGGCAAGAAGAAATGGCCTTGGAAAC
 GGAAAAACAGGCAAAATCCAGGACAGTGGCTTGTGGTCAATACCTGATGACACCTTCAAGGACTCTCT
 CTTTCATCTAGATGGACGACTCAATAAATTAACCTGTGAGATCACTGAAGTTGAAAAAGGAAATACAGTC
 ATTTGGGTTGGAGATGCC

ACCGTACGCGGCCGCTCGAG - GFP Tag - GTTTAA

Protein Sequence: >RG226212 representing NM_001128427
 Red=Cloning site Green=Tags(s)

```

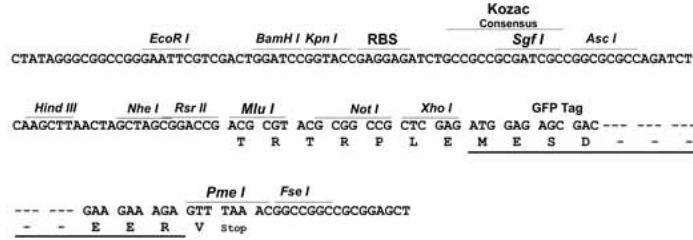
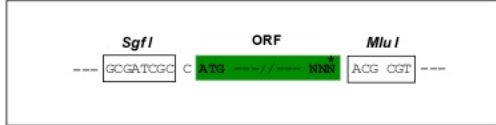
MFKCWSVVLVLGFIFLESEGRPTKEGGYGLKSYQPLMRLRHKEKNQESSRVKGFMIQDGPFGSCENKYCG
LGRHCVTSRETGQAECACMDLCKRHYKPVCGSDGEFYENHCEVHRAACLKKQKITIVHNEDCFFKGDKCK
TTEYSKMKNMLLDLQNQKYIMQENENPNGDDISRKKLLVDQMFKYFDADSNGLVDINELTQVIKQEELGK
DLFDCTLYVLLKYDDFNADKHLALEEFYRAFQVIQLSLPEDQKLSITAATVGQSAVLSCAIQGTLRPPII
WKRNNIILNLDLEDINDFGDDGSLYITKVTTHVGNVTCYADGYEQVYQTHIFQVNVPPVIRVYVESQA
REPGVTASLRCHAEGIPKQPLGWLKNGIDITPKLSKQLTLQANGSEVHISNVRYEDTGAYTCIAKNEAGV
DEDISSLFVEDSARKTLANILWREEGLGIGNMFYVYEDGIKVIQPIECEFRHIKPKSEKLLGFQDEVCP
KAEGDEVQRCVWASAVNVKDKFIYVAQPTLDRVLIVDVQSQKVVQAVSTDPVPVKLHYDKSHDQVWVLSW
GTLEKTSPTLQVITLASGNVPHHTIHTQPVGKQFDRVDDFFIPTTTLIITHMRFGFILHKDEAALQKIDL
ETMSYIKTINLKDYKCPQSLAYTHLGGYYFIGCKPDSTGAVSPQVMVDGVTDSVIGFNSDVTGTPYVSP
DGHYLVSINDVKGLVRVQYITIRGEIQEAFDIYTNLHISDLAFQPSFTEAHQYNIYGSSTQTDVLFVEL
SSGKVKMIKSLKEPLKAEWPNRKNRQIQDSGLFGQYLMTPSKDSLFIIDGRLNKLNCEITEVEKGNTV
IWWGDA
  
```

TRTRPLE - GFP Tag - V

Restriction Sites: Sgfl-MluI

Cloning Scheme:

Cloning sites used for ORF Shutting:

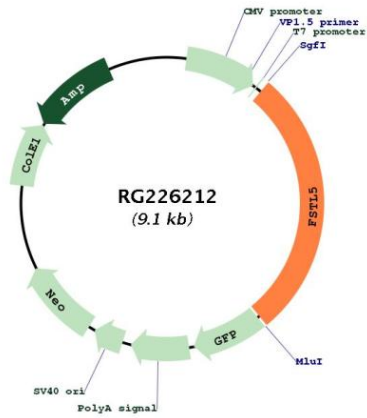


ACCN: NM_001128427

ORF Size: 2538 bp

OTI Disclaimer:	<p>Due to the inherent nature of this plasmid, standard methods to replicate additional amounts of DNA in E. coli are highly likely to result in mutations and/or rearrangements. Therefore, OriGene does not guarantee the capability to replicate this plasmid DNA. Additional amounts of DNA can be purchased from OriGene with batch-specific, full-sequence verification at a reduced cost. Please contact our customer care team at custsupport@origene.com or by calling 301.340.3188 option 3 for pricing and delivery.</p> <p>The molecular sequence of this clone aligns with the gene accession number as a point of reference only. However, individual transcript sequences of the same gene can differ through naturally occurring variations (e.g. polymorphisms), each with its own valid existence. This clone is substantially in agreement with the reference, but a complete review of all prevailing variants is recommended prior to use. More info</p>
OTI Annotation:	This clone was engineered to express the complete ORF with an expression tag. Expression varies depending on the nature of the gene.
Components:	The ORF clone is ion-exchange column purified and shipped in a 2D barcoded Matrix tube containing 10ug of transfection-ready, dried plasmid DNA (reconstitute with 100 ul of water).
Reconstitution Method:	<ol style="list-style-type: none"> 1. Centrifuge at 5,000xg for 5min. 2. Carefully open the tube and add 100ul of sterile water to dissolve the DNA. 3. Close the tube and incubate for 10 minutes at room temperature. 4. Briefly vortex the tube and then do a quick spin (less than 5000xg) to concentrate the liquid at the bottom. 5. Store the suspended plasmid at -20°C. The DNA is stable for at least one year from date of shipping when stored at -20°C.
RefSeq:	<u>NM_001128427.2, NP_001121899.1</u>
RefSeq Size:	4832 bp
RefSeq ORF:	2541 bp
Locus ID:	56884
UniProt ID:	<u>Q8N475</u>
Cytogenetics:	4q32.2
Protein Families:	Secreted Protein

Product images:



Circular map for RG226212