

Product datasheet for **RG226207**

SEZ6L2 (NM_001114099) Human Tagged ORF Clone

Product data:

Product Type:	Expression Plasmids
Product Name:	SEZ6L2 (NM_001114099) Human Tagged ORF Clone
Tag:	TurboGFP
Symbol:	SEZ6L2
Synonyms:	BSRPA; PSK-1
Mammalian Cell Selection:	Neomycin
Vector:	pCMV6-AC-GFP (PS100010)
E. coli Selection:	Ampicillin (100 ug/mL)



[View online »](#)

ORF Nucleotide
Sequence:

>RG226207 representing NM_001114099
Red=Cloning site Blue=ORF Green=Tags(s)

TTTTGTAATACGACTCACTATAGGGCGGCCGGGAATTCGTCGACTGGATCCGGTACCGAGGAGATCTGCC
GCC**CGGATCGCC**

ATGGGGACTCCCAGGGCCAGCACCCGCCGCTCCCCAGCTGCTGTTCTAATTCTGCTGAGCTGTCCCT
GGATCCAGGGTCTGCCCCGAAGGAGGAGGAGATATTGCCAGAGCCTGGAAGTGAGACCCACCGGTGGC
CTCTGAGGCCCTGGCTGAACTGCTTCATGGGGCCCTGCTGAGGAGGGGCCAGAGATGGGCTACCTGCCA
GGGCTCCCCTTGGGCTGAGGGAGGAGGAGGAGACGACGACCACCATCATCACCACGACAACCTGTTA
CCACTACGGTGACCAGCCAGTTCTGTGTAATAACAACATCTCCGAGGGCGAAGGGTATGTGGAGTCTCC
AGATCTGGGGAGCCCGTCAGCCGACCCTGGGGCTCTGGACTGCATTACAGCATCCATGTCTACCTT
GGCTACGGCATTGAGATCCAGGTGCAGACGCTGAACCTGTACAGGAAGAGGAGCTCTGGTGTGGCTG
GTGGGGGATCCCAGGCCTGGCCCCGACTCCTGGCCAACTCATCCATGCTTGAGAAGGACAAGTCTCT
TCGGAGCCCAACCAACCGGCTGCTTCTGCACTTCCAGAGCCACGGGTCCAAGGGCGGTGGCTCAGG
ATCCACTATCAGGCCTACCTCCTGAGCTGTGGTTCCCTCCCCGGCCGGCCCATGGGGACGTGAGTGTGA
CGGACCTGCACCTGGGGCACTGCCACCTTCTACTGTGATTCCGGCTACCGACTGCAGGGAGAGGAGAC
CCTCATCTGCCTCAATGGCACCCGGCCATCCTGGAACGGTGAACCCCCAGCTGCATGGCATCCTGTGGT
GGCACCATCCACAATGCCACCCTGGGCCGATCGTGTCCCAGAGCCTGGGGGAGCCGTAGGGCCCAACC
TCACCTGCCGTTGGGTCAATTGAAGCAGCTGAGGGGCGCCGGCTGCACCTGCATTTGAAAGGGTCTCGCT
GGATGAGGACAATGACCGGCTGATGGTGCCTCAGGGGGCAGCCCCATCCCCCGTGATCTATGATTGCG
GACATGGACGATGTCCCAGCGGGGTCTCATCAGTGACGCCAGTCCCTCTACGTGGAGTGTGCTGCAGC
AGACACTGCCAATCCCCTGCTTTAAGCCTTCGATTTGAAGCCTTTGAGGAGGATCGCTGCTTCGCCCC
CTTCTGGCACATGGAATGTCACTACCACGGACCCTGAGTATCGCCAGGGGCACTGGCAACCTTCTCG
TGCTCCAGGATATGCCTGGAGCCCCCTGGGCCCCCAATGCCATCGAATGTGTGGATCCACAGAAC
CCCAGTGAACGACACAGAGCCGGCCTGCAAGCCATGTGTGGAGGGGAGCTGTGGAACAGCTGGCGT
GGTCTCTCTCCGACTGGCCCCAGAGCTATAGCCGGGCCAAGACTGCGTGTGGGGCGTGCACGTCCAG
GAAGAGAAGCGCATCTTGCTCCAAGTTGAGATATTGAATGTGCGGGAAGGGGACATGCTGACGCTGTTG
ACGGGGACGGTCCAGCGCCGAGTCTTGGCCAGCTGCGGGGACCTCAGCCGCGCCGCCCTTCTCTC
CTCTGGGCCGACCTCACACTGCAGTTTACGGCACCGCCGGGCCCAATCCAGGCCTGGGCCAGGGC
TTCGATTGCACTTCAAAGAGTCCCGAGGAACGACACGTGCCCGAGCTGCCACCTCCGGAGTGGGGCT
GGAGAACGGCATCCCACGGGACCTGATCCGGGGCACGGTGTACCTACCAAGTGCAGGACCTGGCTACGA
GCTGTAGGCTCCGACATTCTCACTTGCCAGTGGGACCTGTCTTGAGCGCCGCGCCGCCCTGCCAA
AAGATCATGACTTGTGCTGACCCTGGCGAGATTGCCAACGGGCACCGCACCGCCTCGGACGCCGGTTC
CCGTTGGCTCCCAGTCCAGTACCGCTGCCTGCCAGGGTACAGCCTCGAGGGGGCAGCATGCTCACCTG
CTACAGCCGGGACACAGGCACACCAAGTGGAGCGATAGGGTCCCCAAATGCGCCTTGAAGTACGAGCCG
TGCTGAACCCGGGGTTCCCAGAAATGGCTACCAGACGCTGTACAAGCACCACTACCAGGCGGGCGAGT
CTCTGCGCTTCTTCTGCTATGAGGGCTTTGAGCTTATCGGCGAGGTACCATCACCTGTGTGCCCGGCCA
CCCCTCCAGTGGACCAGCCAGCCCCACTCTGCAAAGTGACCCAGACCACAGATCCATCACGGCAGCTG
GAAGGGGGAACCTGGCCCTGGCCATCCTGTGCCTCTAGGCTTGGTATTGTCTCGGCAGTGGGTTT
ACATCTACTACCAAGCTTCAAGGAAAGTCCCTTTTCGGCTTCTCGGGCTCCCACTCTACAGCCCAT
CACCGTGGAGTCGGACTTCAGCAACCCGCTGTATGAAGCTGGGGATACGCGGGAGTATGAAGTTCCATC

ACCGTACGCGGCCGCTCGAG - GFP Tag - GTTTAA

Protein Sequence: >RG226207 representing NM_001114099
 Red=Cloning site Green=Tags(s)

```

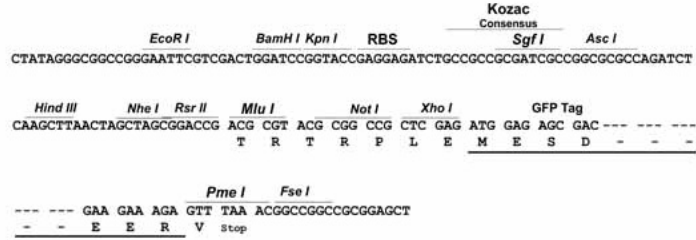
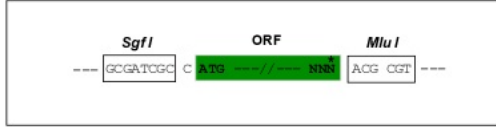
MGTPRAQHPPPPQLFLILLSCPWIQGLPLKEEELPEPGSETPTVASEALAEALLHGALLRRGPEMGYLP
GPPLGPEGEEEETTTTIITTTTITTTTSPVLCNNNISEGEGYVESPDLGSPVSRTLGLLDCTYSIHVYP
GYGIEIQVQTLNLSQEEELLVLAGGGSPGLAPRLLANSSMLGEGQVLRSPNRLLLHFQSPRVPRGGGFR
IHYQAYLLSCGFPPRPAHGDVSVTDLHPGGTATFHCDSGYQLQGEETLICLNGTRPSWNGETPSCMASC
GTIHNATLGRIVSPEPGGAVGNLTCRWVIEAAEGRRLLHLHFERVSLDEDNDRMLMVRSGGSPLSPVIYDS
DMDDVPERGLISDAQSLYVELLSETPANPLLLSLRFEAFEEDRCFAPFLAHGNVTTTDPYRPGALATFS
CLPGYALEPPGPPNAIECVDPTEPHWNDTEPACKAMCGGELSEPAGVVLSPDWPQSYSPGQDCVWGVHVQ
EEKRILLQVEILNVREGDMLTFDGDGPSARVLAQLRGPQPRRLLSSGPDLTQFQAPPGPPNPLGQG
FVLHFKEVPRNDTCPELPPPEWGWRTASHGDLIRGTVLTQCEPGYELLGSDILTCQWDLSSWAAPPACQ
KIMTCADPGEIANGHRTASDAGFPVGSVYRCLPGYSLEGAAMLTCYSRDTGTPKWSDRVPCALKYEP
CLNPGVPENGYQTLTKHHYQAGESLRFYCYEGFELIGEVTITCVPGHPSQWTSQPPLCKVTQTTDPSRQL
EGGNLALAILLPLGLVIVLGSVYIYYTKLQGKSLFGFSGSHSYSPITVESDFSNPLYEAGDTREYEVSI
  
```

TRTRPLE - GFP Tag - V

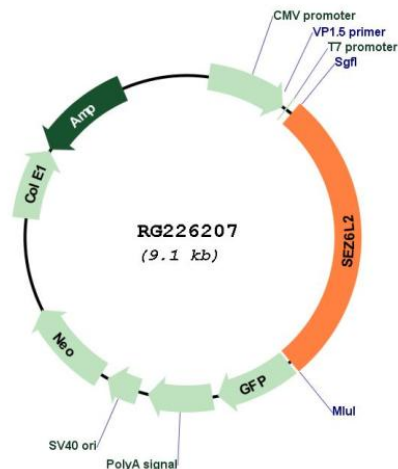
Restriction Sites: Sgfl-Mlul

Cloning Scheme:

Cloning sites used for ORF Shutting:



Plasmid Map:



ACCN: NM_001114099

ORF Size: 2520 bp

OTI Disclaimer: The molecular sequence of this clone aligns with the gene accession number as a point of reference only. However, individual transcript sequences of the same gene can differ through naturally occurring variations (e.g. polymorphisms), each with its own valid existence. This clone is substantially in agreement with the reference, but a complete review of all prevailing variants is recommended prior to use. [More info](#)

OTI Annotation: This clone was engineered to express the complete ORF with an expression tag. Expression varies depending on the nature of the gene.

Components: The ORF clone is ion-exchange column purified and shipped in a 2D barcoded Matrix tube containing 10ug of transfection-ready, dried plasmid DNA (reconstitute with 100 ul of water).

Reconstitution Method:

1. Centrifuge at 5,000xg for 5min.
2. Carefully open the tube and add 100ul of sterile water to dissolve the DNA.
3. Close the tube and incubate for 10 minutes at room temperature.
4. Briefly vortex the tube and then do a quick spin (less than 5000xg) to concentrate the liquid at the bottom.
5. Store the suspended plasmid at -20°C. The DNA is stable for at least one year from date of shipping when stored at -20°C.

RefSeq: [NM_001114099.3](#)

RefSeq Size: 3320 bp

RefSeq ORF: 2523 bp

Locus ID: 26470

UniProt ID: [Q6UXD5](#)

Cytogenetics: 16p11.2

Protein Families: Druggable Genome, Transmembrane

Gene Summary: This gene encodes a seizure-related protein that is localized on the cell surface. The gene is located in a region of chromosome 16p11.2 that is thought to contain candidate genes for autism spectrum disorders (ASD), though there is no evidence directly implicating this gene in ASD. Increased expression of this gene has been found in lung cancers, and the protein is therefore considered to be a novel prognostic marker for lung cancer. Alternative splicing of this gene results in multiple transcript variants. [provided by RefSeq, Aug 2011]