

## Product datasheet for **RG226180**

### **LRRC8A (NM\_001127244) Human Tagged ORF Clone**

#### **Product data:**

Product Type:	Expression Plasmids
Product Name:	LRRC8A (NM_001127244) Human Tagged ORF Clone
Tag:	TurboGFP
Symbol:	LRRC8A
Synonyms:	AGM5; HsLRRC8A; LRRC8; SWELL1
Mammalian Cell Selection:	Neomycin
Vector:	pCMV6-AC-GFP (PS100010)
E. coli Selection:	Ampicillin (100 ug/mL)



[View online »](#)

**ORF Nucleotide Sequence:**

>RG226180 representing NM\_001127244  
 Red=Cloning site Blue=ORF Green=Tags(s)

TTTTGTAATACGACTCACTATAGGGCGGCCGGGAATTCGTCGACTGGATCCGGTACCGAGGAGATCTGCC  
 GCC**CGGATCGCC**

ATGATTCCGGTGACAGAGCTCCGCTACTTTGCGGACACGCAGCCAGCATACCGGATCCTGAAGCCGTGGT  
 GGGATGTGTTACAGACTACATCTCTATCGTCATGCTGATGATTGCCGTCTTCGGGGGACGCTGCAGGT  
 CACCCAAGACAAGATGATCTGCCTGCCTTGTAAAGTGGGTACCAAGGACTCCTGCAATGATTCTGTTCCGG  
 GGCTGGGACGCCCTGGCCCGGAGCCACCTACCCAACTCCACCATTCTGCCGACCCCTGACACGGGCC  
 CCACAGGCATCAAGTATGACCTGGACCGGACAGTACAACCTACGTGGACGCTGTGTGCTATGAGAACCG  
 ACTGCACTGGTTTCCAAGTACTTCCCCTACCTGGTGCTTCTGCACACGCTCATCTTCTGGCCTGCAGC  
 AACTTCTGGTTCAAATTCGCGCACAGCTCGAAGCTGGAGCACTTTGTGTCTATCCTGCTGAAGTGCT  
 TCGACTCGCCCTGGACCACGAGGCCCTGTGGAGACAGTGGTGGAGGAGAGCGACCCCAAGCCGGCCTT  
 CAGCAAGATGAATGGGTCCATGGACAAAAGTCAATCGACCGTCAGTGAGGACGTGGAGGCCACCGTGCC  
 ATGCTGCAGCGGACCAAGTCACGGATCGAGCAGGGTATCGTGGACCGCTCAGAGACGGGCGTGCTGGACA  
 AGAAGGAGGGGGAGCAAGCCAAGGCGCTGTTTGAAGGTTGAAGAAGTCCGGACCCATGTGGAGGAGGG  
 GGACATTTGTACCGCCTCTACATGCGGCAGACCATCATCAAGGTGATCAAGTTCATCCTCATCATCTGC  
 TACACCGTCTACTACGTGCACAACATCAAGTTCGACGTGGACTGCACCGTGGACATTGAGAGCCTGACGG  
 GCTACCGCACCTACCGCTGTGCCACCCCTGGCCACACTCTTCAAGATCCTGGCGTCTTCTACATCAG  
 CCTAGTCATCTTACGGCCTCATCTGCATGTATACACTGTGGTGGATGCTACGGCGCTCCCTCAAGAAG  
 TACTCGTTTGAGTCGATCCGTGAGGAGAGCAGCTACAGCGACATCCCGACGTCAAGAACGACTTCGCT  
 TCATGCTGCACCTCATTGACCAATACGACCCGCTCTACTCCAAGCGCTTCGCCGTCTTCTGTCCGAGGT  
 GAGTGAGAACAAGCTGCGGCAGCTGAACCTCAACAACGAGTGGACGCTGGACAAGCTCCGGCAGCGGCTC  
 ACCAAGAACGCGCAGGACAAGCTGGAGCTGCACCTGTTTATGCTCAGTGGCATCCCTGACACTGTGTTT  
 ACCTGGTGGAGCTGGAGGCTCCTCAAGCTGGAGCTGATCCCGACGTGACCATCCCGCCAGCATTGCCCA  
 GCTCACGGGCTCAAGGAGCTGTGGCTCTACCACACAGCGCCAAAGATTGAAGCGCCCGCTGGCCTTC  
 CTGCGGAGAACCTGCGGGCGTGCACATCAAGTTCACCGACATCAAGGAGATCCCGCTGTGGATCTATA  
 GCCTGAAGACTGGAGGAGCTGCACCTGACGGGCAACCTGAGCGCGGAGAACACCGCTACATCGTCAT  
 CGACGGGCTGCGGAGCTCAAACGCCTCAAGGTGCTGCGGCTCAAGAGCAACCTAAGCAAGCTGCCACAG  
 GTGGTACAGATGTGGGCTGCACCTGCAGAAGCTGTCCATCAACAATGAGGGCACCAAGCTCATCGTCC  
 TCAACAGCCTCAAGAAGATGGCGAACCTGACTGAGCTGGAGCTGATCCGCTGTGACTGGAGCGCATCCC  
 CCACTCCATCTTCAAGCTCCACAACCTGCAGGAGATTGACCTCAAGGACAACAACCTCAAGACCATCGAG  
 GAGATCATCAGCTTCCAGCACCTGCACCGCCTCACCTGCCTTAAGCTGTGGTACAACCACATCGCCTACA  
 TCCCCATCCAGATCGGCAACCTCAACAACCTGGAGCGCCTCTACCTGAACCGCAACAAGATCGAGAAGAT  
 CCCCACCCAGCTCTTCTACTGCCGAAGCTGCGTACCTGGACCTCAGCCACAACAACCTGACCTTCCTC  
 CCTGCCGACATCGGCCTCCTGCAGAACCTCCAGAACCTAGCCATCACGGCCAACCGGATCGAGACGCTCC  
 CTCCGGAGCTCTTCCAGTGCCGGAAGCTGCGGGCCCTGCACCTGGGCAACAACGTGCTGCAGTCACTGCC  
 CTCCAGGGTGGGCGAGCTGACCAACCTGACGCAGATCGAGCTGCGGGGCAACCGGCTGGAGTGCCTGCCT  
 GTGGAGCTGGGCGAGTGCCCACTGCTCAAGCGCAGCGGCTTGGTGGTGGAGGAGGACCTGTTCAACACAC  
 TGCCACCCGAGGTGAAGGAGCGGCTGTGGAGGCTGACAAGGAGCAGGCC

**ACGCGT**ACGCGGCCGCTCGAG - GFP Tag - GTTTAA

Protein Sequence: >RG226180 representing NM\_001127244  
Red=Cloning site Green=Tags(s)

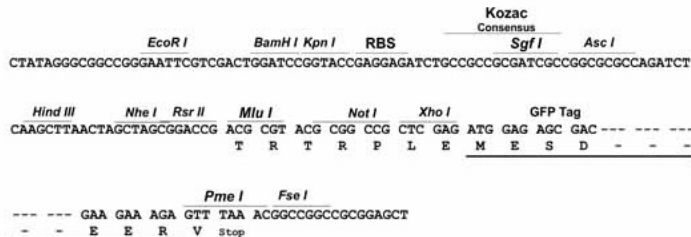
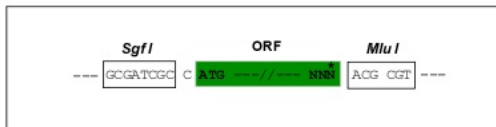
MIPVTELYRFADTQPAYRILKPWWVFTDYISIVMLMIAVFGGTLQVTQDKMICLPCKWVTKDSCNDSFR  
GWAAPGPEPTYPNSTILPTDGTGPTGIKYDLDRHQYNYVDAVCYENRLHWFACYFPYLVLHLLHTLIFLACS  
NFWFKFPRTSSKLEHFVSILLKCFDSPWTRALSETVVEESDPKPAFSKMNGSMDKKSSTVSEDVEATVP  
MLQRTKSRIEQIVDRSETGVLDKKEGEQAKALFEKVKKFRTHVEEGDIVYRLYMRQTIKVIKIFILIIIC  
YTVYYVHNIKFDVDCTVDIESLTGYRTRYCAHPLATLFKILASFYISLVIFYGLICMYTLWMLRRSLKK  
YSFESIREESSYSDIPDVKNDFAFMLHLIDQYDPLYSKRFAVFLSEVSENKLRQLNLNNEWTLDKLRQRL  
TKNAQDKLELHLFMLSGIPDVFDFLVELEVLELIPDVTIPPSIAQLTGLKELWLYHTAAKIEAPALAF  
LRENLRALHIKFTDIKEIPLWIYSLKTLEELHLTGNSAENNRIVIDGLRELKRLKVLRLKSNLSKLPQ  
VVTDVGVHLQKLSINNEGTKLIVLNSLKKMANLTELELRCDLERIPHSIFSLHNLQEIDLKDNLLKTIE  
EIIISFQHLHRLTCLKLWYNHIAYIPIQIGNLTNLERLYLNRNKIEKIPTQLFYCRKLRYLDSLHNNLTFL  
PADIGLLQNLQNLAITANRIETLPPQLFQCRKLRALHLGNNVLQSLPSRVGELTNLTQIELRGNRLECLP  
VELGECPLLKRSGLVVEEDLFNTLPPEVKERLWRADKEQA

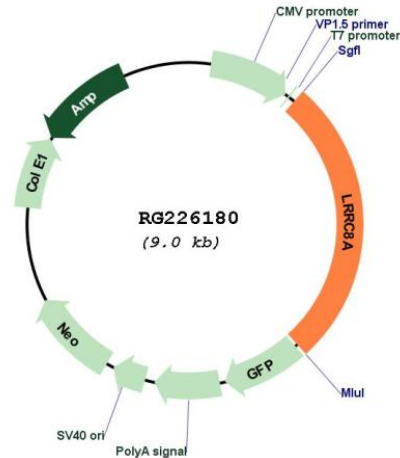
TRTRPLE - GFP Tag - V

Restriction Sites: Sgfl-MluI

**Cloning Scheme:**

Cloning sites used for ORF Shutting:



**Plasmid Map:**


**ACCN:** NM\_001127244

**ORF Size:** 2430 bp

**OTI Disclaimer:** Due to the inherent nature of this plasmid, standard methods to replicate additional amounts of DNA in *E. coli* are highly likely to result in mutations and/or rearrangements. Therefore, OriGene does not guarantee the capability to replicate this plasmid DNA. Additional amounts of DNA can be purchased from OriGene with batch-specific, full-sequence verification at a reduced cost. Please contact our customer care team at [custsupport@origene.com](mailto:custsupport@origene.com) or by calling 301.340.3188 option 3 for pricing and delivery.

The molecular sequence of this clone aligns with the gene accession number as a point of reference only. However, individual transcript sequences of the same gene can differ through naturally occurring variations (e.g. polymorphisms), each with its own valid existence. This clone is substantially in agreement with the reference, but a complete review of all prevailing variants is recommended prior to use. [More info](#)

**OTI Annotation:** This clone was engineered to express the complete ORF with an expression tag. Expression varies depending on the nature of the gene.

**Components:** The ORF clone is ion-exchange column purified and shipped in a 2D barcoded Matrix tube containing 10ug of transfection-ready, dried plasmid DNA (reconstitute with 100 ul of water).

- Reconstitution Method:**
1. Centrifuge at 5,000xg for 5min.
  2. Carefully open the tube and add 100ul of sterile water to dissolve the DNA.
  3. Close the tube and incubate for 10 minutes at room temperature.
  4. Briefly vortex the tube and then do a quick spin (less than 5000xg) to concentrate the liquid at the bottom.
  5. Store the suspended plasmid at -20°C. The DNA is stable for at least one year from date of shipping when stored at -20°C.

**RefSeq:** [NM\\_001127244.1](#), [NP\\_001120716.1](#)

RefSeq Size: 4637 bp

RefSeq ORF: 2433 bp

Locus ID: 56262

UniProt ID: [Q8IWT6](#)

Cytogenetics: 9q34.11

Protein Families: Transmembrane

**Gene Summary:** This gene encodes a protein belonging to the leucine-rich repeat family of proteins, which are involved in diverse biological processes, including cell adhesion, cellular trafficking, and hormone-receptor interactions. This family member is a putative four-pass transmembrane protein that plays a role in B cell development. Defects in this gene cause autosomal dominant non-Bruton type agammaglobulinemia, an immunodeficiency disease resulting from defects in B cell maturation. Multiple alternatively spliced transcript variants, which encode the same protein, have been identified for this gene. [provided by RefSeq, Jul 2008]