

Product datasheet for **RG226153**

ECE1 (NM_001113349) Human Tagged ORF Clone

Product data:

Product Type:	Expression Plasmids
Product Name:	ECE1 (NM_001113349) Human Tagged ORF Clone
Tag:	TurboGFP
Symbol:	ECE1
Synonyms:	ECE
Mammalian Cell Selection:	Neomycin
Vector:	pCMV6-AC-GFP (PS100010)
E. coli Selection:	Ampicillin (100 ug/mL)



[View online »](#)

ORF Nucleotide
Sequence:

>RG226153 representing NM_001113349
Red=Cloning site Blue=ORF Green=Tags(s)

TTTTGTAATACGACTCACTATAGGGCGGCCGGAATTCGTGACTGGATCCGGTACCGAGGAGATCTGCC
GCC**CGCATCGCC**

ATGGAGGCGCTGAGGGAGTCCGTGCTGCATTTGGCCTTGCAGATGTCGACGTACAAGCGGGCCACGCTGG
ACGAGGAGGACCTGGTGGACTCGCTCTCCGAGGGCGACGCATACCCCAACGGCCTGCAGGTGAACCTCCA
CAGCCCCCGAGTGGCCAGAGGTGCTGGCTGCACGGACCCAGGTGGAGAAGCGGCTGGTGGTGTGGTG
GTACTTCTGGCGCAGGACTGGTGGCCTGCTTGGCAGCACTGGGCATCCAGTACCAGACAAGATCCCCCT
CTGTGTGCTGAGCGAAGCTTGTGTCTCAGTGACCAGCTCCATCTTGAGCTCCATGGACCCACAGTGGA
CCCCTGCCATGACTTCTCAGCTACGCCTGTGGGGCTGGATCAAGGCCAACCCAGTCCCTGATGGCCAC
TCACGCTGGGGACCTTCAGCAACCTCTGGGAACACAACCAAGCAATCATCAAGCACCTCCTCGAAAAC
CCACGGCCAGCGTGAGCGAGGCAGAGAGAAAGGCGCAAGTATACTACCGTGCCTGCATGAACGAGACCAG
GATCGAGGAGCTCAGGGCAAACCTCTAATGGAGTTGATTGAGAGGCTCGGGGGCTGGAACATCACAGGT
CCCTGGGCCAAGGACAACCTCCAGGACACCTGCAGGTGGTACCGCCCACTACCGCACCTCACCTTCT
TCTCTGTCTATGTCAAGTCCGATTCCAAGAACCTCAACAGCAACGTGATCCAGGTGGACCAGTCTGGCCT
GGGCTTGGCCCTCGAGAGACTATTACCTGAACAAAACCTGAAAACGAGAAGGTGCTGACCGGATATCTGAAC
TACATGGTCCAGCTGGGGAAGCTGCTGGGCGCGGGGACGAGGAGGCCATCCGGCCCCAGATGCAGCAGA
TCTTGGACTTTGAGACGGCACTGGCCAACATCACCATCCACAGGAGAAGCGCGGTGATGAGGAGCTCAT
CTACCACAAAGTGACGGCAGCCGAGCTGCAGACCTTGGCACCCGCCATCAACTGGTTGCCTTTTCTCAAC
ACCATCTTCTACCCCGTGGAGATCAATGAATCCGAGCCTATTGTGGTCTATGACAAGGAATACCTTGAGC
AGATCTCCACTCTCATCAACACCACCGACAGATGCCTGCTCAACAACATACATGATCTGGAACCTGGTGGC
GAAAACAAGCTCCTTCTTACCAGCGCTTTCAGGACGCCGATGAGAAGTTCATGGAAGTCATGTACGGG
ACCAAGAAGACCTGTCTTCTCGCTGGAAGTTTTGCGTGAGTGACACAGAAAACAACCTGGGCTTTGCGT
TGGGCCCATGTTTGTCAAAGCAACCTTCGCCGAGGACAGCAAGAGCATAGCCACCGAGATCATCTGGA
GATTAAGAAGGCATTTGAGGAAAGCCTGAGCACCTGAAGTGGATGGATGAGGAAACCCGAAAATCAGCC
AAGGAAAAGGCCGATGCCATCTACAACATGATAGGATACCCCAACTTCATCATGGATCCCAAGGAGCTGG
ACAAAGTGTTAATGACTACACTGCAGTCCAGACCTCTACTTTGAAAATGCCATGCGGTTTTTCAACTT
CTCATGGAGGGTCACTGCCGATCAGCTCAGGAAAGCCCCAACAGAGATCAGTGGAGCATGACCCCGCCC
ATGGTGAACGCCTACTACTCGCCACCAAGAATGAGATTGTGTTCCGGCCGGGATCCTGCAGGCACCAT
TCTACACAGCTCCTCACCAAGGCCTTAACTTTGGTGGCATAGGTGTGTCGTGGGCCATGAGCTGAC
TCATGCTTTTGTGATCAAGGACGGGAGTATGACAAGGACGGGAACCTCCGGCCATGGTGGGAAGAACTCA
TCCGTGGAGGCCCTTAAGCGTCAGACCGAGTGCATGGTAGAGCAGTACAGCAACTACAGCGTGAACGGGG
AGCCGGTGAACGGGCGGCACACCTGGGGGAGAACATCGCCGACAACGGGGGTCTCAAGGCGGCCTATCG
GGCTTACCAGAACTGGGTGAAGAAGAACGGGGCTGAGCACTCGCTCCCCACCTGGGCTCACCAATAAC
CAGCTCTTCTTCTGGGCTTTCACAGGTCTGGTCTCCGTCCGCACACCTGAGAGCTCCACGAAGGCC
TCATCACCGATCCACACAGCCCCCTCGCTTCCGGGTATCGGCTCCCTCTCAATTCCAAGGAGTCTC
AGAACACTTCCGCTGCCACCTGGCTCACCCATGAACCCGCTCAAGTGCAGAGTCTGG

ACGCGTACGCGGCCGCTCGAG – GFP Tag – GTTTAA

Protein Sequence: >RG226153 representing NM_001113349
 Red=Cloning site Green=Tags(s)

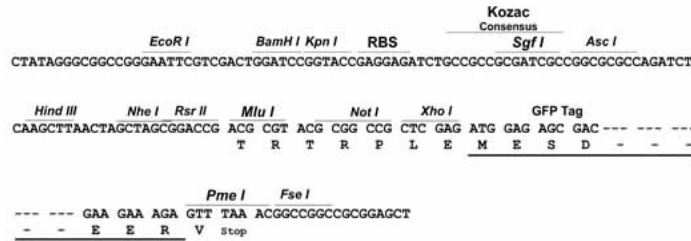
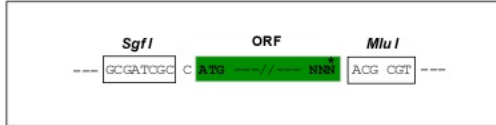
MEALRESVLHLALQMSTYKRATLDEEDLVDSLSEGDAYPNGLQVNFHSPRSGQRCWAARTQVEKRLVVLV
 VLLAAGLVACLAALGIQYQTRSPSVCLSEACVSVTSSILSSMDPTVDPCHDFFSYACGGWIKANPVPDGH
 SRWGTFSNLWEHNQAIKHLLENSTASVSEAERKAQVYYRACMNETRIEELRAKPLMELIERLGGWNITG
 PWAKDNFQDTLQVVTAHYRTSPFFSVYVSADSKNSNSNVIQVDQSGGLPSRDYYLNKTENEKVL TGYLN
 YMVQLGKLLGGGDEEAIRPQMQLIDFETALANITIPQEKRRDEELIYHKVTAELQTLAPAINWLPFLN
 TIFYPVEINESEPIVVYDKEYLEQISTLINTTDRCLLNNYMIWNLVKRTSSFLDQRFQDADEKFMEVYMG
 TKKTCLPRWKFCVSDTENNLGFALGPMFVKATFAEDSKSIATEIILEIKKAEEESLSTLKWMDEETRKSA
 KEKADAIYNMIGYPNFI MPKELDKVFNDYTAVPDL YFENAMRFFNF SWRVADQLRKAPNRDQWSMTTP
 MVNAYYSPTKNEIVFPAGILQAPFYTRSSPKALNFGGIGVVVGHETHAFDDQGREYDKDGNLRPWWKNS
 SVEAFKRQTECMVEQYSNYSVNGEPVNGRHTLGENIADNGGLKAA YRAYQNWVKKNGAEHSLPTLGLTNN
 QLFFLGFAQVWC SVRTPESSHEGLITDPHSPSRFRVIGLSNSKEFSEHFRCPGSPMPPHKCEVW

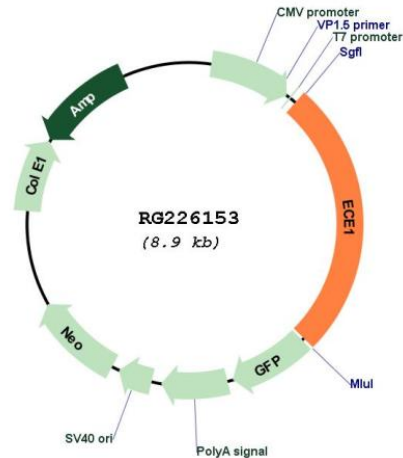
TRTRPLE - GFP Tag - V

Restriction Sites: SgfI-MluI

Cloning Scheme:

Cloning sites used for ORF Shutting:



Plasmid Map:


ACCN: NM_001113349

ORF Size: 2301 bp

OTI Disclaimer: The molecular sequence of this clone aligns with the gene accession number as a point of reference only. However, individual transcript sequences of the same gene can differ through naturally occurring variations (e.g. polymorphisms), each with its own valid existence. This clone is substantially in agreement with the reference, but a complete review of all prevailing variants is recommended prior to use. [More info](#)

OTI Annotation: This clone was engineered to express the complete ORF with an expression tag. Expression varies depending on the nature of the gene.

Components: The ORF clone is ion-exchange column purified and shipped in a 2D barcoded Matrix tube containing 10ug of transfection-ready, dried plasmid DNA (reconstitute with 100 ul of water).

Reconstitution Method:

1. Centrifuge at 5,000xg for 5min.
2. Carefully open the tube and add 100ul of sterile water to dissolve the DNA.
3. Close the tube and incubate for 10 minutes at room temperature.
4. Briefly vortex the tube and then do a quick spin (less than 5000xg) to concentrate the liquid at the bottom.
5. Store the suspended plasmid at -20°C. The DNA is stable for at least one year from date of shipping when stored at -20°C.

RefSeq: [NM_001113349.2](#)

RefSeq Size: 5105 bp

RefSeq ORF: 2304 bp

Locus ID: 1889

UniProt ID:	<u>P42892</u>
Cytogenetics:	1p36.12
Protein Families:	Druggable Genome, Protease, Transmembrane
Gene Summary:	The protein encoded by this gene is involved in proteolytic processing of endothelin precursors to biologically active peptides. Mutations in this gene are associated with Hirschsprung disease, cardiac defects and autonomic dysfunction. Alternatively spliced transcript variants encoding different isoforms have been noted for this gene.[provided by RefSeq, Sep 2009]