

## Product datasheet for **RG226131**

### ISLR2 (NM\_001130137) Human Tagged ORF Clone

#### Product data:

Product Type:	Expression Plasmids
Product Name:	ISLR2 (NM_001130137) Human Tagged ORF Clone
Tag:	TurboGFP
Symbol:	ISLR2
Synonyms:	LINX
Mammalian Cell Selection:	Neomycin
Vector:	pCMV6-AC-GFP (PS100010)
E. coli Selection:	Ampicillin (100 ug/mL)



[View online »](#)

**ORF Nucleotide Sequence:**

>RG226131 representing NM\_001130137  
 Red=Cloning site Blue=ORF Green=Tags(s)

TTTTGTAATACGACTCACTATAGGGCGGCCGGAATTCGTCGACTGGATCCGGTACCGAGGAGATCTGCC  
 GCC**GCGATCGCC**

ATGTTCCCCCTTCGGCCCTGTGGTTGGTCTGGGCGCTTCTAGGAGTGGCCGGATCATGCCCGAGCCGT  
 GCGCCTGCGTGGACAAGTACGCTCACCAGTTCGCGGACTGCGCTTACAAAGAGTTGCGTGAGGTGCCGGA  
 AGGACTGCCTGCCAACGTGACGACGCTTAGTCTGTCCGCAACAAGATCACTGTGCTGCGCGCGGGGCC  
 TTCGCGACGTACACAGGTACGTCGCTGTGGCTGGCGACAATGAGGTGCGCACCGTGGAGCCAGGCG  
 CACTGGCCGTGCTGAGTCAGCTCAAGAACCTCGATCTGAGCCACAACCTTCATATCCAGCTTTCCTGGAG  
 CGACCTGCGCAACCTGAGCGCGCTGCAGCTGCTCAAAATGAACCACAACCGCCTGGGCTCTCTGCCCCGG  
 GACGCACTCGGTGCGCTACCCGACCTGCGTTCCTGCGCATCAACAACAACCGGCTGCGTACGCTGGCGC  
 CTGGCACCTTCGACGCGCTTAGCGCGCTGTCACTTGCACCTCTATCACAATCCCTTCCACTGCGGCTG  
 CGCCCTTGTGTGGCTGCAGGCCCTGGGCCGCGAGCACCCGGGTGTCCTTACCCGAGCCGACTCCATTGCT  
 TGTGCCTCGCCTCCCGCGCTGCAGGGGGTGCCTGTACCGCCTGCCCGCCTGCCCTGTGCACCGCCCA  
 CGGTGCATCTGAGTGCCGAGCCACCGCTTGAAGCACCCGGCACCCCACTGCGCGCAGGACTGGCGTTCGT  
 GTTACACTGCATCGCCGACGCCCACCCTACGCCTCGCCTGCAATGGCAACTTCAGATCCCCGGTGGCACC  
 GTAGTCTTAGAGCCACCGGTTCTGAGCGGGGAGGACGACGGGGTGGGGCGGAGGAAGGAGAGGGAGAAG  
 GAGATGGGGATTTGCTGACGCAGACCCAAGCCAAACGCCGACTCCAGCACCCGCTTGGCCGGCGCCCC  
 AGCCACACCGCGCTTCTGGCCCTCGAAATGGCTCCCTGTTGGTGGCCCTCCTGAGTGCCAAGGAGGCG  
 GGCGTCTACACTTGGCGTGCACACAATGAGCTGGGCGCAACTCTACGTCAATACGCGTGGCGGTGGCAG  
 CAACCGGGCCCCAAAACACGCGCTGGCGCCGGGGGAGAACCAGCGGACAGGCCCGGACTCTGAGCG  
 CAAGTCCACAGCCAAGGGCCGGGCAACAGCGTCTCCTGCCTTCAAACCCGAGGGCAAAATCAAAGGCCAA  
 GGCTGGCCAAGTCAAGTCTCGGGGAGACCGAGACGAGCCGAGGAGGACACAAGTGAAGGAGAGG  
 AGGCCGAAGACCAGATCCTCGCGGACCCGGCGGAGGAGCAGCGCTGTGGCAACGGGGACCCTCTCGGTA  
 CGTTTCTAACCACGCTTCAACCAGAGCGCAGAGCTCAAGCCGCACGTCTTCGAGCTGGCGTTCATCGCG  
 CTGGATGTGGCGGAGCGGAGGCGGGTGCAGCTGACTCCGCTGGTGCAGCGCTGGGGCCCTGGGCCCG  
 GCGGGGCTGGCGGAGCCCGCGACCCGGGCGGCGACCCCTGCGCCTACTCTATCTGTGTCCAGCGGGGG  
 CGGCGCGCAGTGCAGTGGTCCCGCTAGAGGAAGGCGTCAACGCCTACTGGTTCGCGGCTGCGGCCG  
 GGTACCAACTACTCCGTGCTGGCGTGGCGGCGAAGCCTGCCACGTGCAAGTGGTGTTCACCA  
 AGAAGGAGCTCCCATCGCTGCTGGTTCATAGTGGCAGTGAGCGTATTCCTCCTGGTGTGGCCACAGTGCC  
 CCTTCTGGGCGCGCCTGCTGCCATCTGCTGGTAAACACCCGGGCAAGCCCTACCGTCTGATCCTGCGG  
 CCTCAGGCCCTGACCCTATGGAGAAGCGCATCGCCGAGACTTCGACCCGCGTGCTTCGTACCTCGAGT  
 CCGAGAAAAGCTACCCGGCAGGCGGCGAGGCGGGCGGAGGAGCCAGAGGACGTGCAGGGGGAGGGCCT  
 TGATGAAGACGCGGAGCAGGGAGACCAAGTGGGACCTGCAGAGAGAGGAGAGCCTGGCGGCTGCTCA  
 CTGGTGGAGTCCAGTCCAAGGCCAACCAAGAGGATTCGAGGCGGGCTCTGAGTACAGCGATCGGCTGC  
 CCCTGGGCGCGAGGCGGTCAACATCGCCAGGAGATTAATGGCAACTACAGGACAGCGGACGGC

AG**CGGACCG**ACGCGTACGCGGCCGCTCGAG - GFP Tag - GTTAA

**Protein Sequence:** >RG226131 representing NM\_001130137  
Red=Cloning site Green=Tags(s)

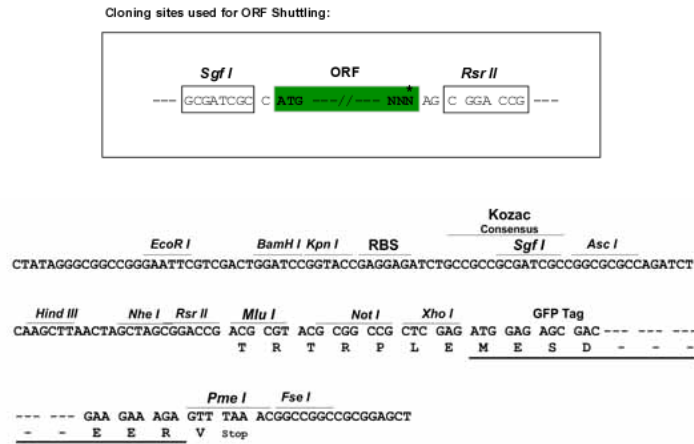
```

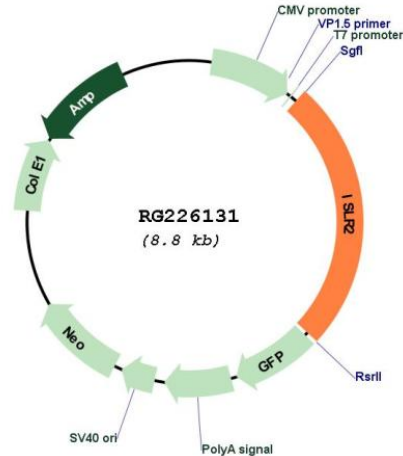
MFPLRALWLWVALLGVAGSCPEPCACVDKYAHQFADCA YKELREVPEGLPANVTTLSSLANKITVLRGA
FADVTQVTSWLVAHNEVRTVEPGALAVLSQLKNLDL SHNFISSFPWSDLRNL SALQLLKMNNHRLGSLPR
DALGALPDLRSLRINNRLRTLAPGTFDAL SALSHLQL YHNPFFHC GGLVWLQAWAASTRVSLPEPDSIA
CASPPALQGVVPVYRLPALPCAPPSVHL SAEPPL EAPGTP LRAGLAFVLH CIADGHPTPRLQWQLQIPGGT
VVLEPPVLSGEDDGVGAEEGEGEGDGLLTQTQA QTPTPAPAWPAPPATPRFLALANGSLLVPLLSAKEA
GVYTCRAHNELGANSTSIRVAVAA TGPPKHAPGAGGEPDQA PTERKSTAKGRNSVLPSPKEGKIKGQ
GLAKVSI LGETETEPEEDTSEGEAEDQILADPAEEQRCGNGDPSRYVSNHAFNQSAELKPHVFELGVIA
LDVAEREARVQLTPLAARWGPGPGGAGGAPRGRRLRL LYLCPAGGAAVQWSRVEEGVNAVWFRGLRP
GTNYSVCLALAGEACHVQVVFSTKKELPSLLVIVAVSVL LVLATVPLLGAACCHLLAKHPGKPYRLILR
PQAPDPMEKRIAADFDPRASYLESEKSY PAGGEAGGEEP DVQGEGLDEDAEQGDPSGDLQREESLAACS
LVESQSKANQE EFEAGSEYSDRLPLGAEAVNIAQE INGNRYQTAG
    
```

SGPTRRRLE - GFP Tag - V

**Restriction Sites:** SgfI-RsrII

**Cloning Scheme:**



**Plasmid Map:**


**ACCN:** NM\_001130137

**ORF Size:** 2235 bp

**OTI Disclaimer:** The molecular sequence of this clone aligns with the gene accession number as a point of reference only. However, individual transcript sequences of the same gene can differ through naturally occurring variations (e.g. polymorphisms), each with its own valid existence. This clone is substantially in agreement with the reference, but a complete review of all prevailing variants is recommended prior to use. [More info](#)

**OTI Annotation:** This clone was engineered to express the complete ORF with an expression tag. Expression varies depending on the nature of the gene.

**Components:** The ORF clone is ion-exchange column purified and shipped in a 2D barcoded Matrix tube containing 10ug of transfection-ready, dried plasmid DNA (reconstitute with 100 ul of water).

**Reconstitution Method:**

1. Centrifuge at 5,000xg for 5min.
2. Carefully open the tube and add 100ul of sterile water to dissolve the DNA.
3. Close the tube and incubate for 10 minutes at room temperature.
4. Briefly vortex the tube and then do a quick spin (less than 5000xg) to concentrate the liquid at the bottom.
5. Store the suspended plasmid at -20°C. The DNA is stable for at least one year from date of shipping when stored at -20°C.

**RefSeq:** [NM\\_001130137.1](#), [NP\\_001123609.1](#)

**RefSeq Size:** 4569 bp

**RefSeq ORF:** 2238 bp

**Locus ID:** 57611

UniProt ID: [Q6UXK2](#)  
Cytogenetics: 15q24.1  
Protein Families: Druggable Genome, Transmembrane  
Gene Summary: Required for axon extension during neural development.[UniProtKB/Swiss-Prot Function]