

Product datasheet for **RG226130**

ISLR2 (NM_001130136) Human Tagged ORF Clone

Product data:

Product Type:	Expression Plasmids
Product Name:	ISLR2 (NM_001130136) Human Tagged ORF Clone
Tag:	TurboGFP
Symbol:	ISLR2
Synonyms:	LINX
Mammalian Cell Selection:	Neomycin
Vector:	pCMV6-AC-GFP (PS100010)
E. coli Selection:	Ampicillin (100 ug/mL)



[View online »](#)

ORF Nucleotide
Sequence:

>RG226130 representing NM_001130136
Red=Cloning site Blue=ORF Green=Tags(s)

TTTTGTAATACGACTCACTATAGGGCGGCCGGGAATTCGTCGACTGGATCCGGTACCGAGGAGATCTGCC
GCC**CGGATCGCC**

ATGTTCCCCCTTCGGGCCCTGTGGTTGGTCTGGGCGCTTCTAGGAGTGGCCGGATCATGCCCGAGCCGT
GCGCCTGCGTGGACAAGTACGCTCACCAGTTCGCGGACTGCGCTTACAAAGAGTTGCGTGAGGTGCCGGA
AGGACTGCCTGCCAACGTGACGACGCTTAGTCTGTCCGCAACAAGATCACTGTGCTGCGCGCGGGGCC
TTCGCGGACGTACACAGGTACGTCGCTGTGGCTGGCGACAATGAGGTGCGCACCGTGGAGCCAGGCG
CACTGGCCGTGCTGAGTCAGCTCAAGAACCTCGATCTGAGCCACAACCTCATATCCAGCTTTCGCTGGAG
CGACCTGCGCAACCTGAGCGCGCTGCAGCTGCTCAAAATGAACCACAACCGCCTGGGCTCTCTGCCCCGG
GACGCACTCGGTGCGCTACCCGACCTGCGTTCCTGCGCATCAACAACAACCGGCTGCGTACGCTGGCGC
CTGGCACCTTCGACGCGCTTAGCGCGCTGTCACTTGCACCTCTATCACAATCCCTTCCACTGCGGCTG
CGCCCTTGTGTGGCTGCAGGCCCTGGGCCGCGAGCACCCGGGTGTCCTTACCCGAGCCGACTCCATTGCT
TGTGCCTCGCCTCCCGCGCTGCAGGGGGTGCCTGTACCGCCTGCCCGCCTGCCCTGTGCACCGCCCA
CGGTGCATCTGAGTGCCGAGCCACCGCTTGAAGCACCCGGCACCCCACTGCGCGCAGGACTGGCGTTCGT
GTTACACTGCATCGCCGACGCCCACCCTACGCCTCGCCTGCAATGGCAACTTCAGATCCCCGGTGGCACC
GTAGTCTTAGAGCCACCGGTTCTGAGCGGGGAGGACGACGGGGTGGGGCGGAGGAAGGAGAGGGAGAAG
GAGATGGGGATTTGCTGACGCAGACCCAAGCCAAACGCCGACTCCAGCACCCGCTTGGCCGGCGCCCC
AGCCACACCGCGCTTCTGGCCCTCGAAATGGCTCCCTGTTGGTGGCCCTCCTGAGTGCCAAGGAGGCG
GGCGTCTACACTTGGCGTGCACACAATGAGCTGGGCGCAACTCTACGTCAATACGCGTGGCGGTGGCAG
CAACCGGGCCCCAAAACACGCGCTGGCGCCGGGGGAGAACCAGCGGACAGGCCCCGACTCTGAGCG
CAAGTCCACAGCCAAGGGCCGGGCAACAGCGTCTCCTGCCTTCAAACCCGAGGGCAAAATCAAAGGCCAA
GGCCTGGCCAAGTCAAGTCTCGGGGAGACCGAGACGAGCCGAGGAGGACACAAGTGAAGGAGAGG
AGGCCGAAGACCAGATCCTCGCGGACCCGGCGGAGGAGCAGCGCTGTGGCAACGGGGACCCTCTCGGTA
CGTTTCTAACCACGCTTCAACCAGAGCGCAGAGCTCAAGCCGCACGTCTTCGAGCTGGCGTCAATCGG
CTGGATGTGGCGGAGCGGAGGCGGGTGCAGCTGACTCCGCTGGTGCAGCGCTGGGGCCCTGGGCCCG
GCGGGGCTGGCGGAGCCCGCGACCCGGGCGGCGACCCCTGCGCCTACTCTATCTGTGTCCAGCGGGGG
CGGCGCGCAGTGCAGTGGTCCCGCTAGAGGAAGGCGTCAACGCCTACTGGTTCGCGGCTGCGGCCG
GGTACCAACTACTCCGTGCTGCTGGCGCTGGCGGCGAAGCCTGCCACGTGCAAGTGGTGTTCACCA
AGAAGGAGCTCCATCGCTGCTGGTCAATAGTGGCAGTGAGCGTATTCCTCCTGGTGTGGCCACAGTGCC
CCTTCTGGGCGCGCCTGCTGCCATCTGCTGGTAAACACCCGGGCAAGCCCTACCGTCTGATCCTGCGG
CCTCAGGCCCTGACCCTATGGAGAAGCGCATCGCCGAGACTTCGACCCGCGTGCTTCGTACCTCGAGT
CCGAGAAAAGCTACCCGGCAGGCGGCGAGGCGGGCGGCGAGGAGCCAGAGGACGTGCAGGGGGAGGGCCT
TGATGAAGACGCGGAGCAGGGAGACCAAGTGGGACCTGCAGAGAGAGGAGAGCCTGGCGGCTGCTCA
CTGGTGGAGTCCAGTCCAAGGCCAACCAAGAGGAGTTCGAGGCGGGCTCTGAGTACAGCGATCGGCTGC
CCCTGGGCGCGAGGCGGTCAACATCGCCAGGAGATTAATGGCAACTACAGGACAGCGGACGGC

AGCGGACCGACGCGTACGCGGCCGCTCGAG - GFP Tag - GTTTAA

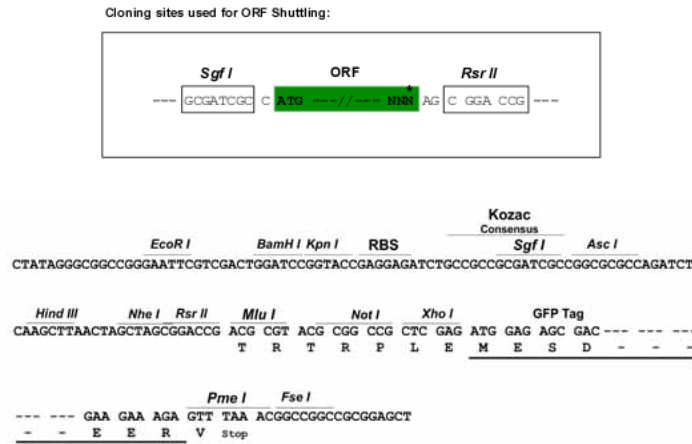
Protein Sequence: >RG226130 representing NM_001130136
 Red=Cloning site Green=Tags(s)

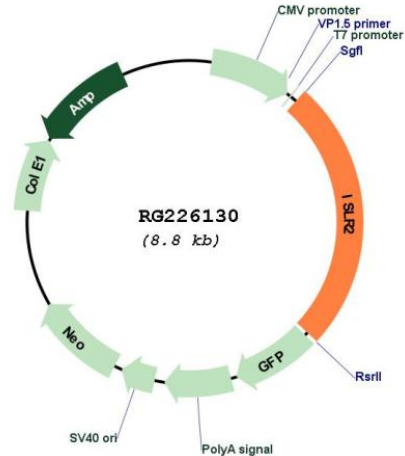
```
MFPLRALWLVALLGVAGSCPEPCACVDKYAHQFADCAYPELREVPEGLPANVTLSLSANKITVLRGA
FADVTQVTSWLVAHNEVRTVEPGALAVLSQLKNLDLSHNFISFPWSDLRNL SALQLLKMNNHRLGSLPR
DALGALPDLRSLRINNRLRTLAPGTFDAL SALSHLQLYHNPFFHCGLVWLQAWAASRVSLPEPDSIA
CASPPALQGVVYRLPALPCAPPSVHLSAEPPLAEPGTPLRAGLAFVLHCIADGHPTPRLQWQLQIPGGT
VVLEPPVLSGEDDGVGAEEGEGEGDGLLTQTQAQTPTPAPAWPAPPATPRFLALANGSLLVPLLSAKEA
GVYTCRAHNELGANSTSIRVAVAAATGPPKHAPGAGGEPDQAPTSEKSTAKGRNSVLPSPKEGKIKGQ
GLAKVSI LGETETEPEEDTSEGEAEDQILADPAEEQRCGNGDPSRYVSNHAFNQSAELKPHVFELGVIA
LDVAEREARVQLTPLAARWGP GPGGAGGAPRGRRLRLLYLCPAGGAAVQWSRVEEGVNAVWFRGLRP
GTNYSVCLALAGEACHVQVVFSTKKELPSLLVIVAVSVFLLVLATVPLLGAACCHLLAKHPKPYRLILR
PQAPDPMEKRIAADFDPRASYLESEKSY PAGGEAGGEEPEDVQGEGLDEDAEQGDPSGDLQREESLAACS
LVESQSKANQEEFEAGSEYSDRLPLGAEAVNIAQEINGNYRQTAG
```

SGPTRRRLE - GFP Tag - V

Restriction Sites: SgfI-RsrII

Cloning Scheme:



Plasmid Map:


ACCN: NM_001130136

ORF Size: 2235 bp

OTI Disclaimer: The molecular sequence of this clone aligns with the gene accession number as a point of reference only. However, individual transcript sequences of the same gene can differ through naturally occurring variations (e.g. polymorphisms), each with its own valid existence. This clone is substantially in agreement with the reference, but a complete review of all prevailing variants is recommended prior to use. [More info](#)

OTI Annotation: This clone was engineered to express the complete ORF with an expression tag. Expression varies depending on the nature of the gene.

Components: The ORF clone is ion-exchange column purified and shipped in a 2D barcoded Matrix tube containing 10ug of transfection-ready, dried plasmid DNA (reconstitute with 100 ul of water).

Reconstitution Method:

1. Centrifuge at 5,000xg for 5min.
2. Carefully open the tube and add 100ul of sterile water to dissolve the DNA.
3. Close the tube and incubate for 10 minutes at room temperature.
4. Briefly vortex the tube and then do a quick spin (less than 5000xg) to concentrate the liquid at the bottom.
5. Store the suspended plasmid at -20°C. The DNA is stable for at least one year from date of shipping when stored at -20°C.

RefSeq: [NM_001130136.1](#), [NP_001123608.1](#)

RefSeq Size: 4833 bp

RefSeq ORF: 2238 bp

Locus ID: 57611

UniProt ID: [Q6UXK2](#)
Cytogenetics: 15q24.1
Protein Families: Druggable Genome, Transmembrane
Gene Summary: Required for axon extension during neural development.[UniProtKB/Swiss-Prot Function]