

Product datasheet for **RG226127**

Gelsolin (GSN) (NM_001127666) Human Tagged ORF Clone

Product data:

Product Type:	Expression Plasmids
Product Name:	Gelsolin (GSN) (NM_001127666) Human Tagged ORF Clone
Tag:	TurboGFP
Symbol:	Gelsolin
Synonyms:	ADF; AGEL
Mammalian Cell Selection:	Neomycin
Vector:	pCMV6-AC-GFP (PS100010)
E. coli Selection:	Ampicillin (100 ug/mL)



[View online »](#)

ORF Nucleotide Sequence:

>RG226127 representing NM_001127666
 Red=Cloning site Blue=ORF Green=Tags(s)

TTTTGTAATACGACTCACTATAGGGCGGCCGGAATTCGTCGACTGGATCCGGTACCGAGGAGATCTGCC
 GCC**CGCATCGCC**

ATGAAAAAAGTGTGTTGCTTTCCCAACAGCATGGTGGTGAACACCCCGAGTTCCTCAAGGCAGGGA
 AGGAGCCTGGCCTGCAGATCTGGCGTGTGGAGAAGTTCGATCTGGTGCCCGTGCCACCAACCTTTATGG
 AGACTTCTTACGGGCGACGCCCTACGTCATCTGAAGACAGTGCAGCTGAGGAACGGAAATCTGCAGTAT
 GACCTCCACTACTGGCTGGGCAATGAGTGCAGCCAGGATGAGAGCGGGGCGGCCATCTTTACCGTGC
 AGCTGGATGACTACCTGAACGGCCGGCCGTGCAGCACCGTGAGGTCCAGGGCTTCGAGTCGGCCACCTT
 CCTAGGCTACTTCAAGTCTGGCCTGAAGTACAAGAAAGGAGGTGTGGCATCAGGATCAAGCACGTGGTA
 CCCAACGAGGTGGTGGTGCAGAGACTCTCCAGGTCAAAGGGCGCGTGTGGTCCGTGCCACCGAGGTAC
 CTGTGTCCTGGGAGACTTCAACAATGGCGACTGCTTCATCTGGACCTGGGCAACAACATCCACCAGTG
 GTGTGGTTCCAACAGCAATCGGTATGAAAGACTGAAGGCCACACAGGTGTCCAAGGGCATCCGGGACAAC
 GAGCGGAGTGGCCGGGCCGAGTGCACGTGTCTGAGGAGGGCACTGAGCCGAGGGCGATGCTCCAGGTGC
 TGGGCCCCAAGCCGGCTCTGCCTGCAGGTACCGAGGACACCGCCAAGGAGGATGCGGCCAACCGAAGCT
 GGCCAAGCTCTACAAGGTCTCCAATGGTGCAGGGACCATGTCCGTCTCCCTCGTGGCTGATGAGAACCC
 TTCGCCAGGGGGCCCTGAAGTCAGAGGACTGCTTCATCTGGACCACGGCAAAGATGGGAAAATCTTTG
 TCTGAAAAGGCAAGCAGGCAAACACGGAGGAGAGGAAGGTGCCCTCAAAACAGCCTCTGACTTCATCAC
 CAAGATGGACTACCCCAAGCAGACTCAGGTCTCGGTCTTCTGAGGGCGGTGAGACCCACTGTCAAG
 CAGTTCTTCAAGAACTGGCGGGACCCAGACCAGACAGATGGCCTGGGCTGTCTACCTTTCCAGCCATA
 TCGCCAACGTGGAGCGGGTGCCTTCGACGCCACCCCTGCACACCTCCACTGCCATGGCCGCCAGCA
 CGGCATGGATGACGATGGCACAGGCCAGAAACAGATCTGGAGAATCGAAGGTTCCAACAAGGTGCCCGTG
 GACCTGCCACATATGGACAGTCTATGGAGGCGACAGCTACATCATTCTGTACAACACCGCCATGGTG
 GCCGCCAGGGGCAGATAATCTATAACTGGCAGGGTGCAGTCTACCCAGGATGAGGTGCGTGCATCTGC
 CATCCTGACTGCTCAGCTGGATGAGGAGCTGGGAGGTACCCCTGTCCAGAGCCGTGGTCCAAGGCAAG
 GAGCCCGCCACCTCATGAGCCTGTTGGTGGGAAGCCATGATCATCTACAAGGGCGGCACCTCCCGCG
 AGGGCGGGCAGACAGCCCTGCCAGCACCCGCTCTTCCAGGTCCGCGCCAACAGCGCTGGAGCCACCCG
 GGCTGTTGAGGTATTGCCTAAGGCTGGTGCAGTGAACCAACGATGCCTTTGTTCTGAAAACCCCTCA
 GCCGCTACCTGTGGTGGTACAGGAGCCAGCGAGGCAGAGAAGACGGGGGCCAGGAGCTGCTCAGGG
 TGCTGCGGGCCAACTGTGCAGGTGGCAGAAGGCAGCGAGCCAGATGGCTTCTGGGAGGCCCTGGGCGG
 GAAGGCTGCCTACCGCACATCCCCACGGCTGAAGGACAAGAAGATGGATGCCATCCTCCTCGCCTCTTT
 GCCTGCTCCAACAAGATTGGACGTTTTGTGATCGAAGAGGTTCTGGTGGCTCATGCAGGAAGACCTGG
 CAACGGATGACGTATGCTTCTGGACACCTGGGACCAGGTCTTTGTCTGGGTTGGAAAGGATTCTCAAGA
 AGAAGAAAAGACAGAAGCCTTGACTTCTGCTAAGCGGTACATCGAGACGGACCCAGCCAATCGGGATCGG
 CGGACGCCCATCACCGTGGTGAAGCAAGCTTTGAGCCTCCCTCCTTTGTGGGCTGGTTCCTTGGCTGGG
 ATGATGATTACTGGTCTGTGGACCCCTTGACAGGGCCATGGCTGAGCTGGCTGCC

ACGCGTACGCGGCCGCTCGAG - GFP Tag - GTTTAA

Protein Sequence: >RG226127 representing NM_001127666
 Red=Cloning site Green=Tags(s)

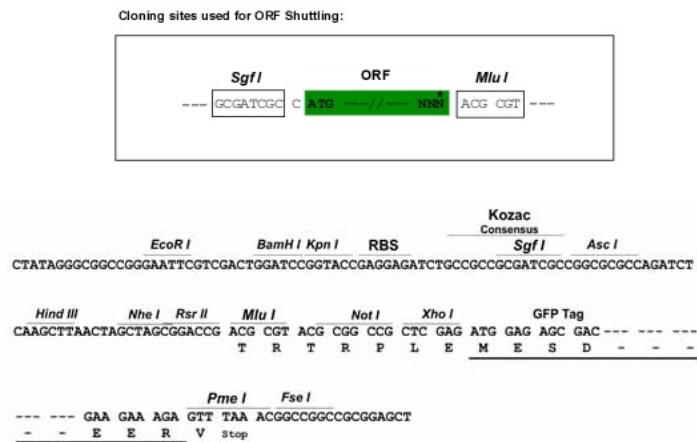
```

MEKLFCCFPNSMVVEHPEFLKAGKEPGLQIWRVEKFDLVPVPTNLYGDDFTGDAYVILKTVQLRNGNLQY
DLHYWLGNECSQDESGAAAIFTVQLDDYLNGRAVQHREVGQFESATFLGYFKSGLKYKGGVASGFKHVV
PNEVVVQRLFQVKGRRVVRATEVPVSWESFNNGDCFILDLGNNIHQWCGSNSNRYERLKATQVSKGIRDN
ERSGRARVHVSEEGTEPEAMLQVLGPKPALPAGTEDTAKEDAANRKLAKLYKVSNGAGTMSVSLVADENP
FAQGALKSEDCFILDHGKDGKIFVWKGKQANTEERKAALKTASDFITKMDYPKQTQVSVLPEGGETPLFK
QFFKNWRDPDQTDGLGLSYLSSHIANVERVPFDAATLHTSTAMAAQHGMDDDGTDGQKQIWRIEGSKVPV
DPATYQGQFYGGDSYIILYNYRHGGRQGQIIYNWQGAQSTQDEVAASAAILTAQLDEELGGTPVQSRVVQGK
EPAHMLSLFGGKPMIYKGGTSREGGQTAPASTRLFQVRANSAGATRAVEVLPKAGALNSNDAFVLKTPS
AAYLVWGTGASEAEKTGAQELLRLVRAQPVQVAEGSEPDGFWEALGGKAAVRTSPRLKDKKMDAHPRLF
ACSNKIGRFVIEEVPGELMQEDLATDDVMLLDTWDQVFWVWGKDSQEEETALTSAKRYIETDPANRDR
RTPITVVKQGFEPSPFVGWFLGWDDDYWSVDPLDRAMAELAA
  
```

TRTRPLE - GFP Tag - V

Restriction Sites: SgfI-MluI

Cloning Scheme:



ACCN: NM_001127666

ORF Size: 2226 bp

OTI Disclaimer: The molecular sequence of this clone aligns with the gene accession number as a point of reference only. However, individual transcript sequences of the same gene can differ through naturally occurring variations (e.g. polymorphisms), each with its own valid existence. This clone is substantially in agreement with the reference, but a complete review of all prevailing variants is recommended prior to use. [More info](#)

OTI Annotation: This clone was engineered to express the complete ORF with an expression tag. Expression varies depending on the nature of the gene.

Components: The ORF clone is ion-exchange column purified and shipped in a 2D barcoded Matrix tube containing 10ug of transfection-ready, dried plasmid DNA (reconstitute with 100 ul of water).

Reconstitution Method:

1. Centrifuge at 5,000xg for 5min.
2. Carefully open the tube and add 100ul of sterile water to dissolve the DNA.
3. Close the tube and incubate for 10 minutes at room temperature.
4. Briefly vortex the tube and then do a quick spin (less than 5000xg) to concentrate the liquid at the bottom.
5. Store the suspended plasmid at -20°C. The DNA is stable for at least one year from date of shipping when stored at -20°C.

RefSeq: [NM_001127666.2](#)

RefSeq Size: 2756 bp

RefSeq ORF: 2229 bp

Locus ID: 2934

UniProt ID: [P06396](#)

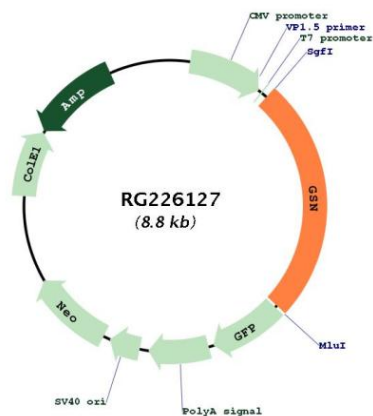
Cytogenetics: 9q33.2

Protein Families: Druggable Genome, Secreted Protein

Protein Pathways: Fc gamma R-mediated phagocytosis, Regulation of actin cytoskeleton

Gene Summary: The protein encoded by this gene binds to the "plus" ends of actin monomers and filaments to prevent monomer exchange. The encoded calcium-regulated protein functions in both assembly and disassembly of actin filaments. Defects in this gene are a cause of familial amyloidosis Finnish type (FAF). Multiple transcript variants encoding several different isoforms have been found for this gene. [provided by RefSeq, Jul 2008]

Product images:



Circular map for RG226127