

Product datasheet for **RG226098**

TBC1D14 (NM_001113361) Human Tagged ORF Clone

Product data:

| | |
|---------------------------|---|
| Product Type: | Expression Plasmids |
| Product Name: | TBC1D14 (NM_001113361) Human Tagged ORF Clone |
| Tag: | TurboGFP |
| Symbol: | TBC1D14 |
| Mammalian Cell Selection: | Neomycin |
| Vector: | pCMV6-AC-GFP (PS100010) |
| E. coli Selection: | Ampicillin (100 ug/mL) |



[View online »](#)

ORF Nucleotide Sequence:

>RG226098 representing NM_001113361
 Red=Cloning site Blue=ORF Green=Tags(s)

TTTTGTAATACGACTCACTATAGGGCGGCCGGGAATTCGTCGACTGGATCCGGTACCGAGGAGATCTGCC
 GCC**CGGATCGCC**

ATGACTGATGAAAACCTCTCCACCTCTACAAATGGCGTAGCCTTCATGGGTATTCTGGATGGTGCACCAG
 GAAACCCCTTCAGAACCTGCAACACGTC AATCTCAAGGCGCCCGACTCCTCTCCGCGCCTGAGTACGG
 GCCCAAGCTGAAAACCTCAGGGCTTTAGAAGACCGGCACAGCCTCCAGTCCGTGGACTCGGGGATTCTACC
 CTGGAGATCGGGAACCCGGAGCCTGTACCTGCAGCGCGTCCACGTGAGGAGGAAGCAGTCCGACTCCG
 ACCTCATCCCCGAGCGGGCCTTCAGAGCGCCTGCGCGTGCCATCCTGTGCGCCACCAGCTCCTAGCAG
 CACCGAGCGGGAACAGAGCGTGCCAAATCCTCCACGTTTCCAGGACAGGCTATGACTCGGTAAAGCTC
 TATAGCCCGACCTCCAAAGCCCTGACCCGACGCGATGATGTCTCCGTCTGCAGCGTGTCCAGTCTGGGA
 CAGAGCTGTCCACCACGCTGTCCGTGAGCAATGAGGACATCTTGGACCTGTGGTACAGCAGCAGTCCAG
 TGCCATTGTGACCCTGGAGAATGACGATGACCCACAGTTTACCAACGTACCTTGAGCTCTATCAAGGAA
 ACCCGTGGCTTACACCAGCAGGACTGTGTTTCATGAAGCTGAGGAGGGGAGTAAATGAAAATATTGGGGC
 CATTAGTAACCTCTTTGCAAGGAACCTGCTTGCTAGAAAACAAAGTGC AAGGCTTGACAAAACACATGA
 CTTGGGATGGAAGTTATTTGGGAAAGCGCCACTCCGAGAGAATGCCCAGAAGGATCAAAGAGAATACAG
 AAGGAATATGAAGACAAGGCTGGAAGACCTAGCAAGCCACCCTCTCCAAAGCAGAATGTGAGGAAGAATC
 TTGACTTTGAACCACTTTCCACCACCGCACTCATCCTCGAGGACAGACCAGCAAATCTCCAGCAAAACC
 AGCTGAAGAAGCTCAGAAGCACAGACAGCAGTATGAAGAAATGGTGGTTCAGGCCAAAAGCGAGAGCTG
 AAAGAAGCCAGCGAAGGAAGAAGCAGCTGGAAGAAAGATGCAGAGTGCAGGAAAGCATTGGAAACGCTG
 TGCTCACCTGGAATAATGAGATCTTACCTAACTGGGAAACAATGTGGTGTCTAGAAAAGTTCGAGATTT
 ATGGTGGCAGGGAATCCCTCCAAGTGTGAGAGGCAAAGTCTGGAGCTTAGCCATTGGCAACGAGTTAAAT
 ATCACCCACGAGCTCTTTGACATCTGTCTTGCCCGAGCCAAGGAGAGGTGGCGGTCCCTTAGCACAGGAG
 GCTCTGAAGTGGAGAACGAAGATGCTGGTTTTTCAGCAGCAGACAGAGAAGCCAGTCTGGAGCTTATTAA
 ACTGGACATTTCTAGAACATTTCTAATCTCTGCATTTTCCAGCAAGGTGGTCCATATCATGACATGTTG
 CACAGTATTTGGGCGCTTATACTTGTACCAGCCAGATGTGGTATGTCCAGGGCATGCTTTCATAG
 CAGCAGTGTGATCTTGAACCTTAGATACTGCAGATGCCTTTATTGCCTTTTCTAACCTTCTGAATAAACC
 CTGTCAAATGGCGTTTTTTAGAGTGGACCATGGCCTTATGTTGACTATTTTGTGCATTTGAAGTATTC
 TTTGAAGAAAATTTGCCGAAATTTTGGCGATTTCAAGAAGAACAACCTAACTCCAGATATCTACCTAA
 TTGATTGGATCTTTACCTTATATAGTAAATCTCTGCCCTCGACCTGGCCTGTGCTATCTGGGACGTGTT
 CTGTCCGATGGGGAAGAGTTCTGTTCCGCACGGCCCTGGGCATCCTGAAGCTGTTTCGAGGACATCCTG
 ACCAAGATGGACTTCATTACATGGCCAGTTCCTGACCCGGCTGCCCGAGGACCTGCCCGCGAGGAGC
 TGTTCCTCCATCGCCACGATCCAGATGCAGAGCCGAAACAAGAAGTGGGCTCAGGTAAGTACTGACTGCATT
 GCAGAAAGACAGCCGGGAAATGGAGAAGGGAAGTCCGTCCCTCCGACAC

ACGCGTACGCGGCCGCTCGAG – GFP Tag – GTTTAA

Protein Sequence: >RG226098 representing NM_001113361
 Red=Cloning site Green=Tags(s)

```

MTDGKLTSTNGVAFMGILDGRPGNPLQNLQHVNLKAPRLLSAPEYGPGLKLRALDRHSLQSVDSGIPT
LEIGNPEPVPCSAVHVRKQSDSDLIPERAFQSACALPSCAPPAPSSTEREQSVRKSSTFPRTGYDSVKL
YSPTSKALTRSDDVSVCSVSSLGTELSTLVSVNEDILDVVTSSSSAIVTLENDDDPQFTNVTLSIKE
TRGLHQQDCVHEAEEGSKLKILGPF SNFFARNLLARKQSARLDKHNDLGWKLFGKAPLRENAQKDSKRIQ
KEYEDKAGRPSKPPSPKQNVKNDLDFEPLSTTALILED RPANLPAKPAEEAQKHRQQYEEMVQAKKREL
KEAQRKKQLEERCREEESIGNAVLTWNNEILPNWETMWC SRKVRDLWWQGIPPSVRGKVVWSLAIGNELN
ITHELFDICLARAKERWRSLSGGSEVENEDAGFSAADREASLELIKLDISRTFPNLCIFQQGGPYHDM
HSILGAYTCYRPDVGVYQGMSFIAAVLILNLDTADAFIAFNNLLNKPCQMAFFRVDHGLMLTYFAAFEV
FEENLPKLF AHFKNNLTPDIYLIDWIFTLYSKSLPLDLACRIWVFCRDGEEFLFRTALGILKLFEDIL
TKMDFIHMAQFLTRLPEDLPAEELFASIAI IQMSRNKKAQVLTALQKDSREMEKGPSLRH
  
```

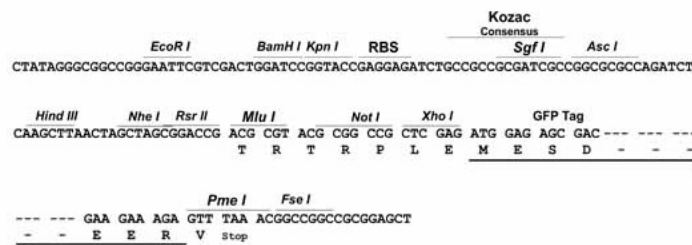
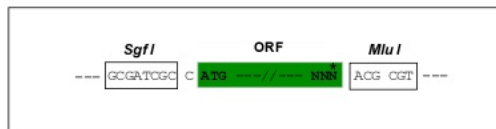
TRTRPLE - GFP Tag - V

Restriction Sites:

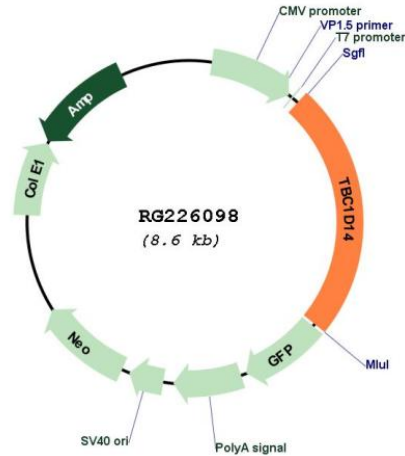
SgfI-MluI

Cloning Scheme:

Cloning sites used for ORF Shuttling:



Plasmid Map:



ACCN: NM_001113361

ORF Size: 2079 bp

OTI Disclaimer: The molecular sequence of this clone aligns with the gene accession number as a point of reference only. However, individual transcript sequences of the same gene can differ through naturally occurring variations (e.g. polymorphisms), each with its own valid existence. This clone is substantially in agreement with the reference, but a complete review of all prevailing variants is recommended prior to use. [More info](#)

OTI Annotation: This clone was engineered to express the complete ORF with an expression tag. Expression varies depending on the nature of the gene.

Components: The ORF clone is ion-exchange column purified and shipped in a 2D barcoded Matrix tube containing 10ug of transfection-ready, dried plasmid DNA (reconstitute with 100 ul of water).

Reconstitution Method:

1. Centrifuge at 5,000xg for 5min.
2. Carefully open the tube and add 100ul of sterile water to dissolve the DNA.
3. Close the tube and incubate for 10 minutes at room temperature.
4. Briefly vortex the tube and then do a quick spin (less than 5000xg) to concentrate the liquid at the bottom.
5. Store the suspended plasmid at -20°C. The DNA is stable for at least one year from date of shipping when stored at -20°C.

RefSeq: [NM_001113361.1](#), [NP_001106832.1](#)

RefSeq Size: 4887 bp
RefSeq ORF: 2082 bp
Locus ID: 57533
UniProt ID: [Q9P2M4](#)
Cytogenetics: 4p16.1
Gene Summary: Negative regulator of starvation-induced autophagosome formation.[UniProtKB/Swiss-Prot Function]